

City of Santa Fe Water: 2021 Supply Update

July, 2021

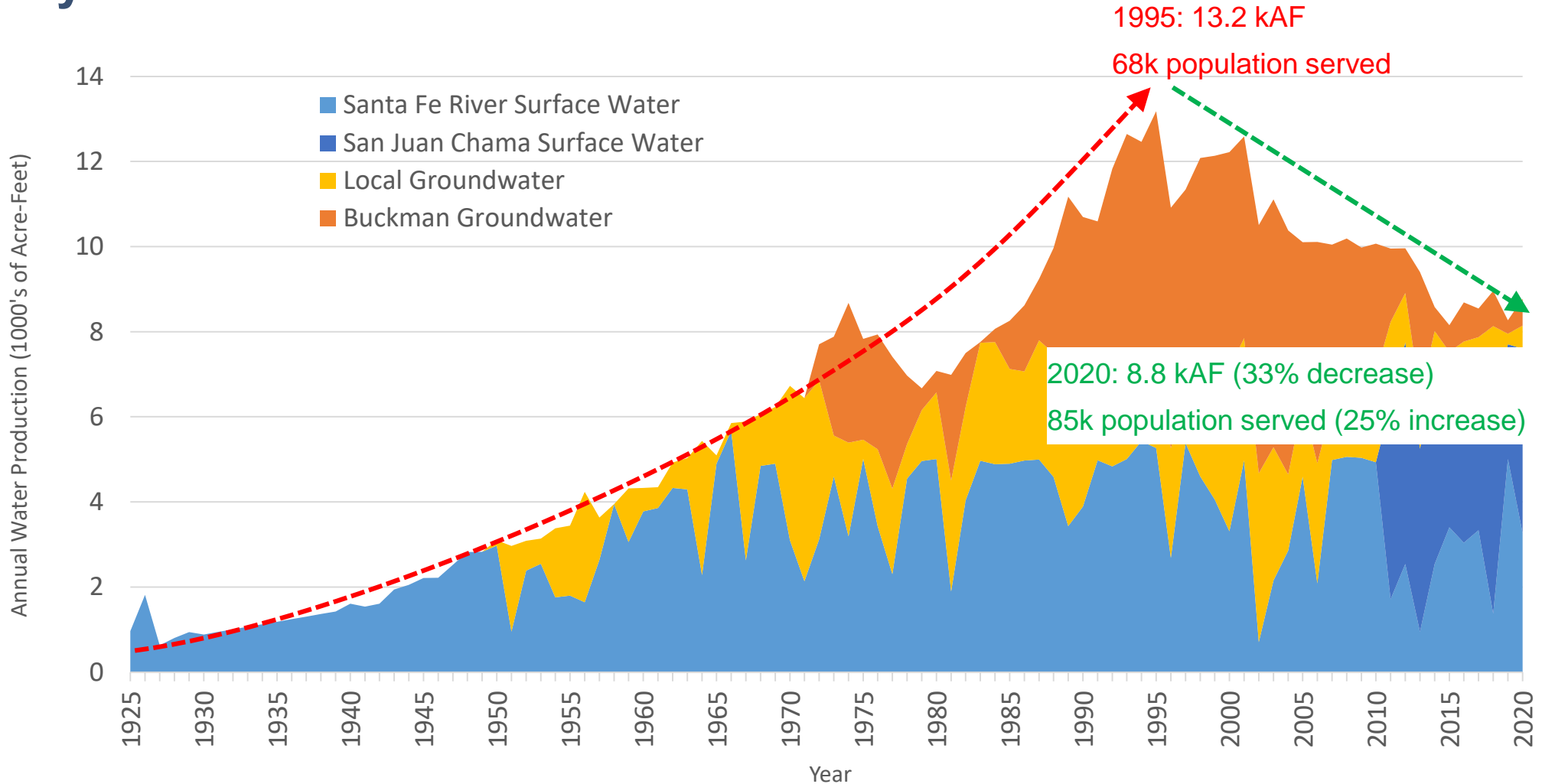
City of Santa Fe Water: Resiliency During Drought

- Since 1995, population has increased by 1/4 and our community has reduced total water use by 1/3
- For the past 5 years our demand has been below 9,000 AF/yr
- For the past 5 years, sustainable supply has been ~13,000 AF/yr
- Well levels have recovered dramatically over the past 10 years
- 4 sources of supply plus conservation make us resilient
- 5th source of supply in the works
- We require builders to expand water supply
- Actively developing and updating 40 and 80 year water resource plans

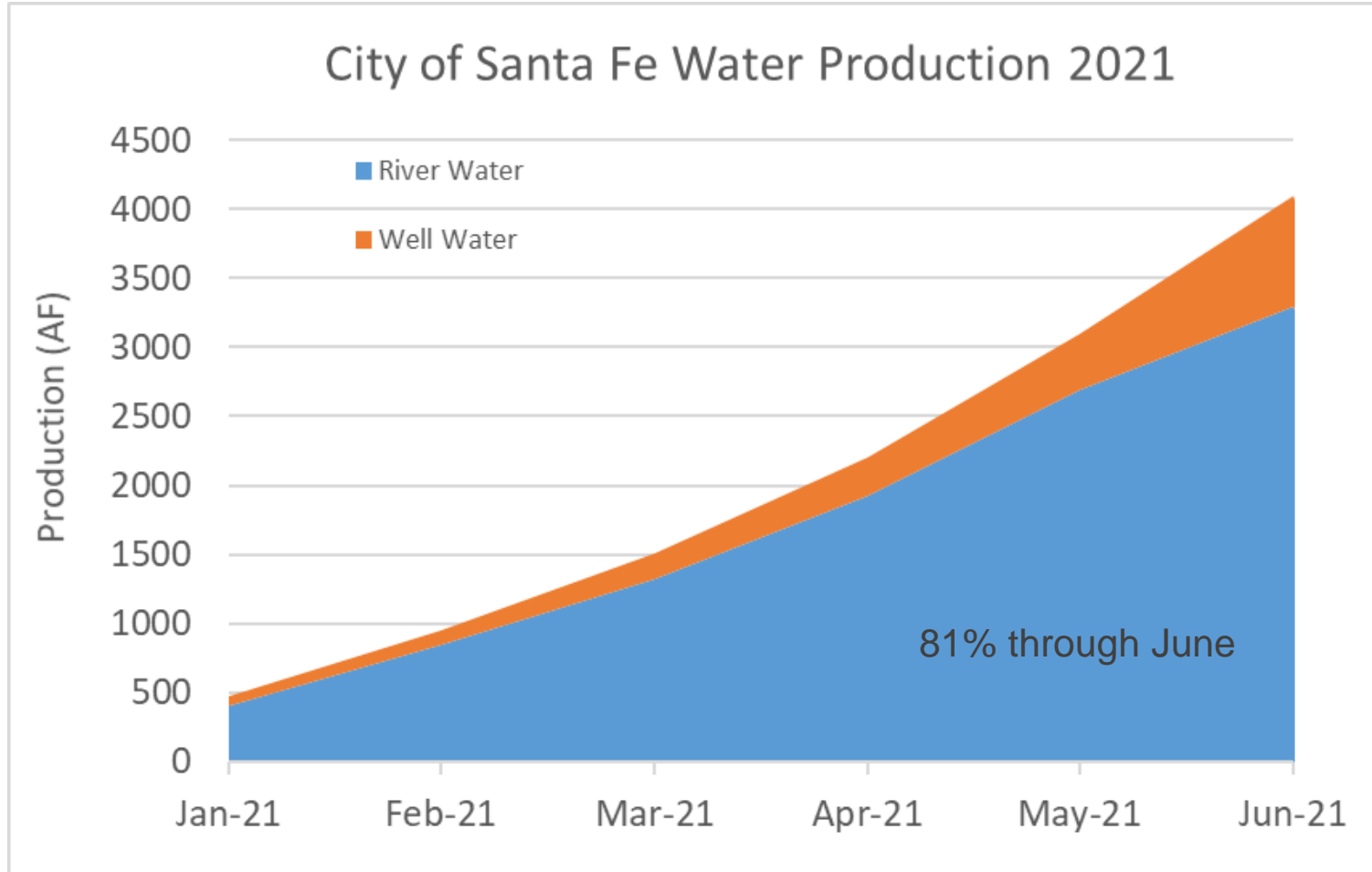


Providing a safe,
reliable, and resilient
water supply to meet
Santa Fe's needs.

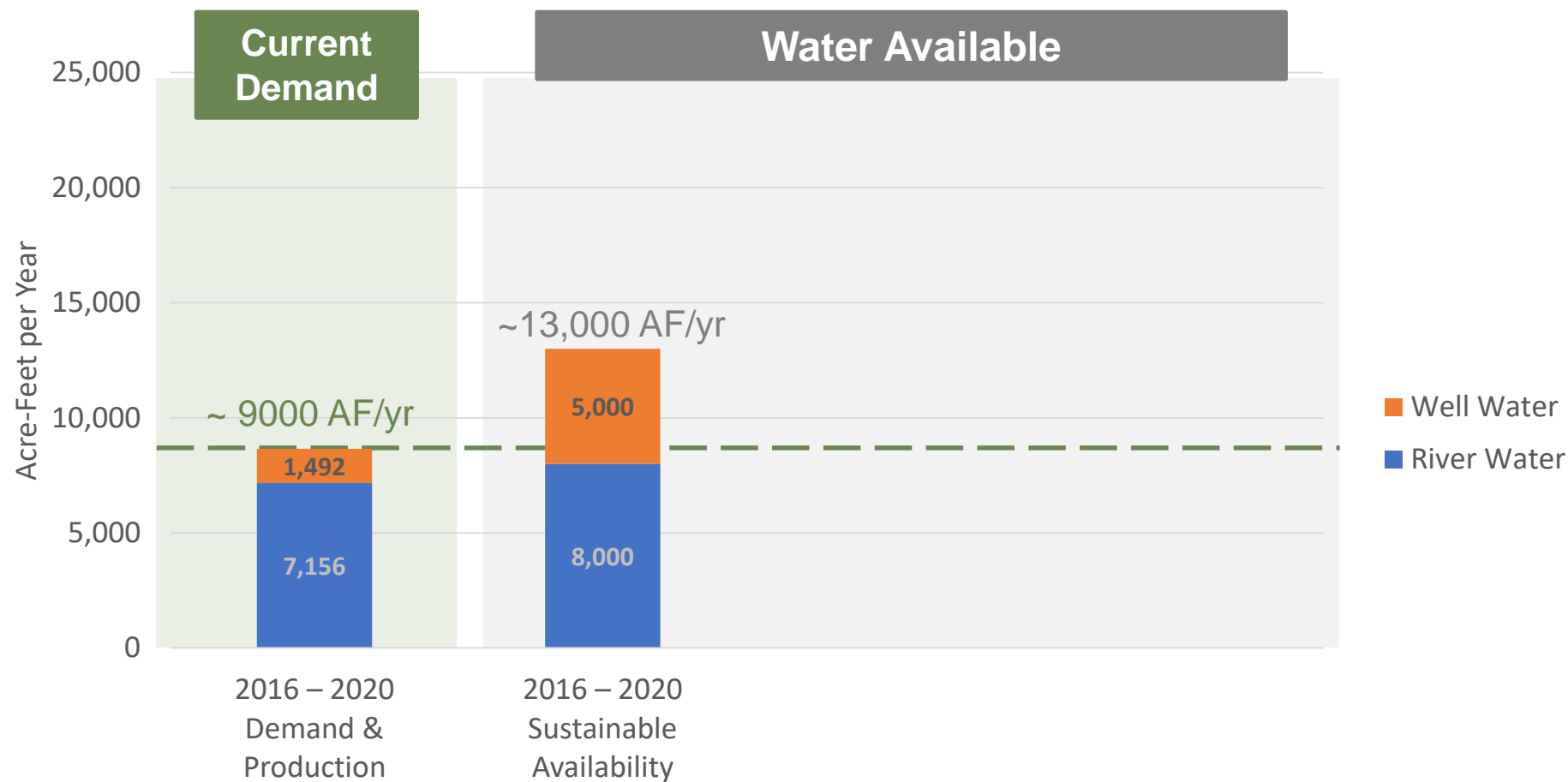
City of Santa Fe Water: A Picture Is Worth...



Even this year, 80% of our water use so far is from rivers



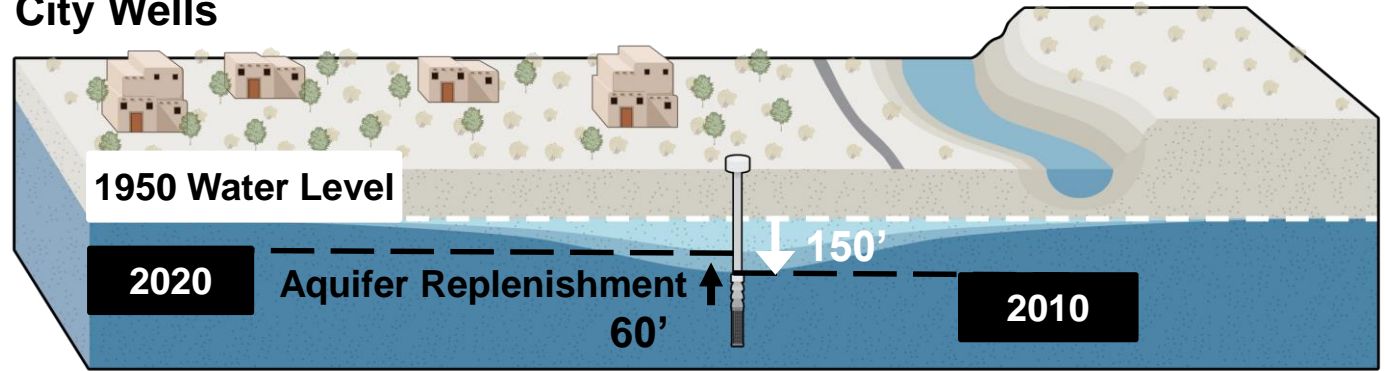
Current (average of past 5 years) Demand and Supply



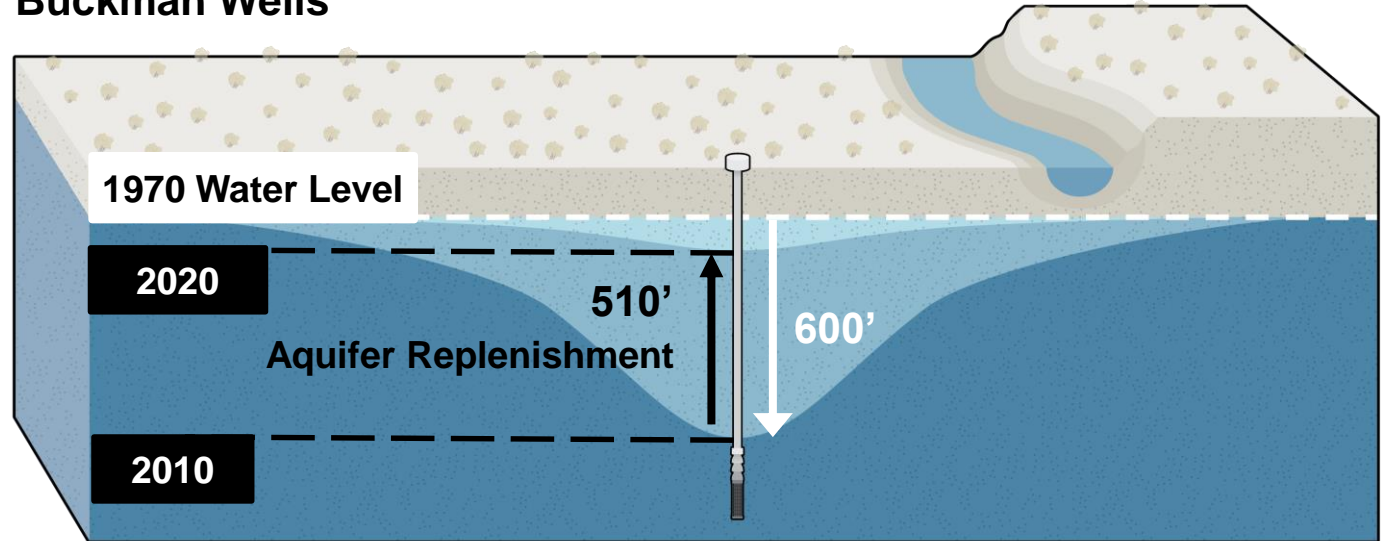
Room for growth (in our wellfields)

- Since 2010, our wells have been recovering
- We would prefer to keep our wells in reserve as a drought proof backup

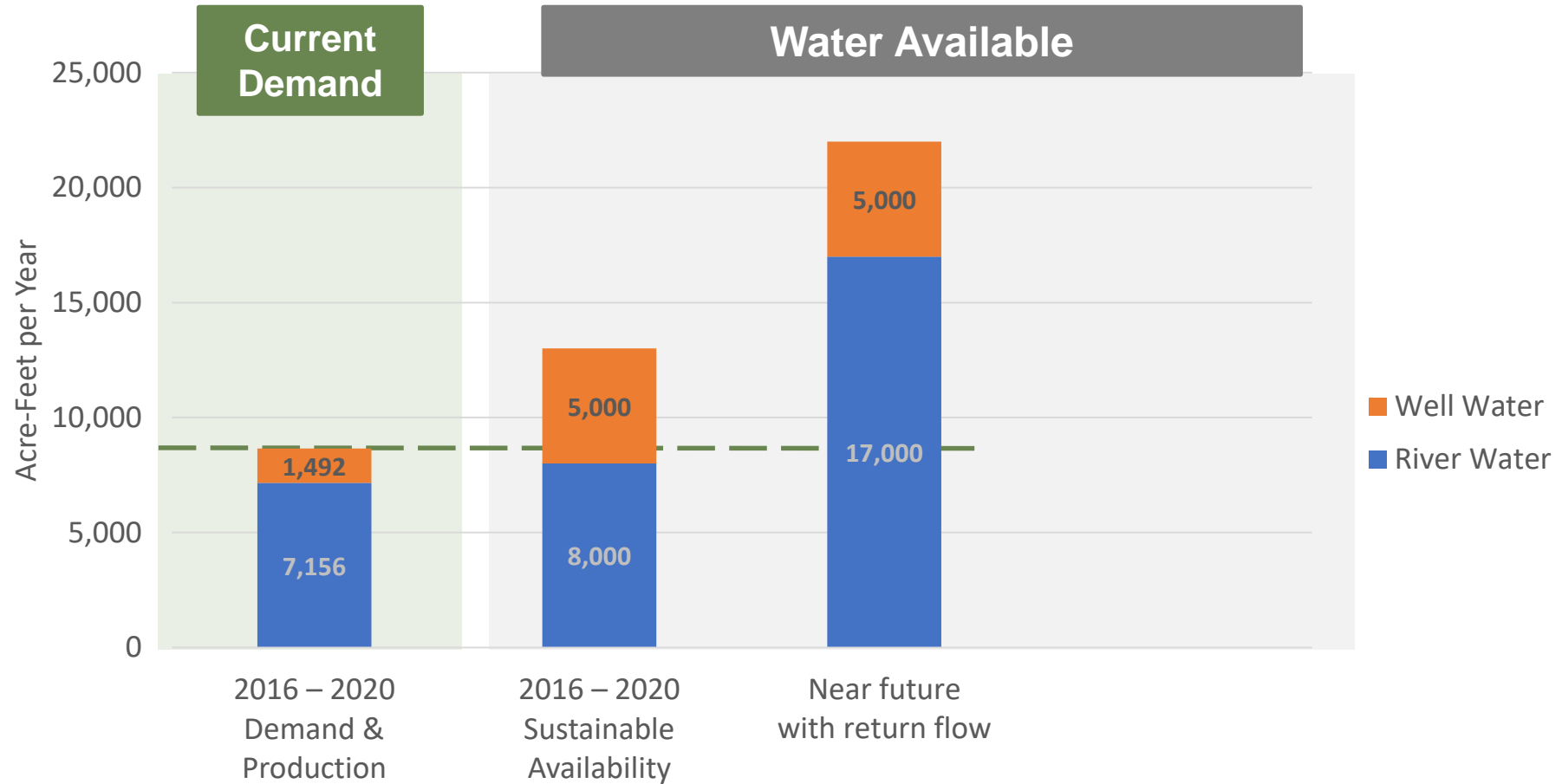
City Wells



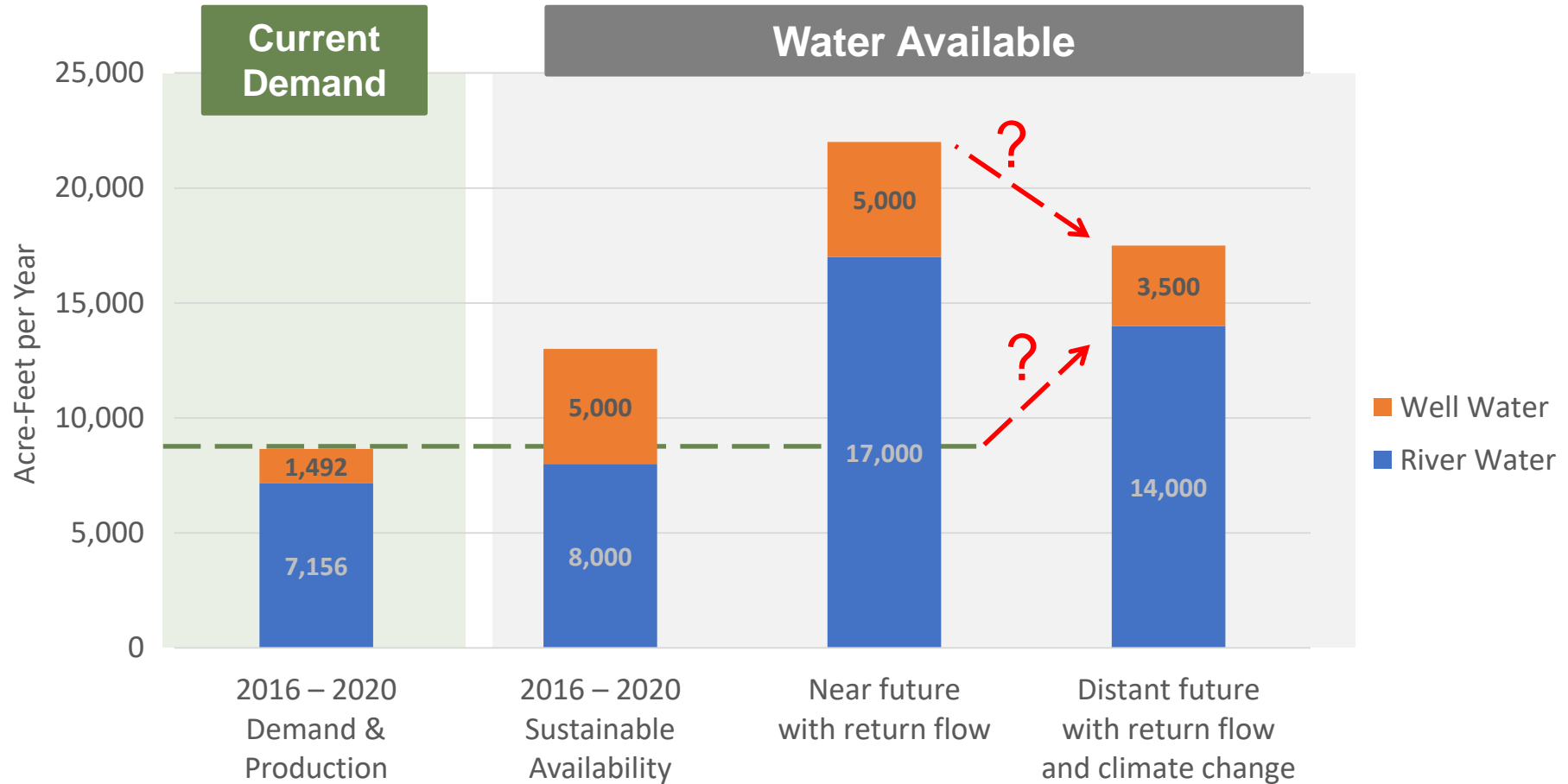
Buckman Wells



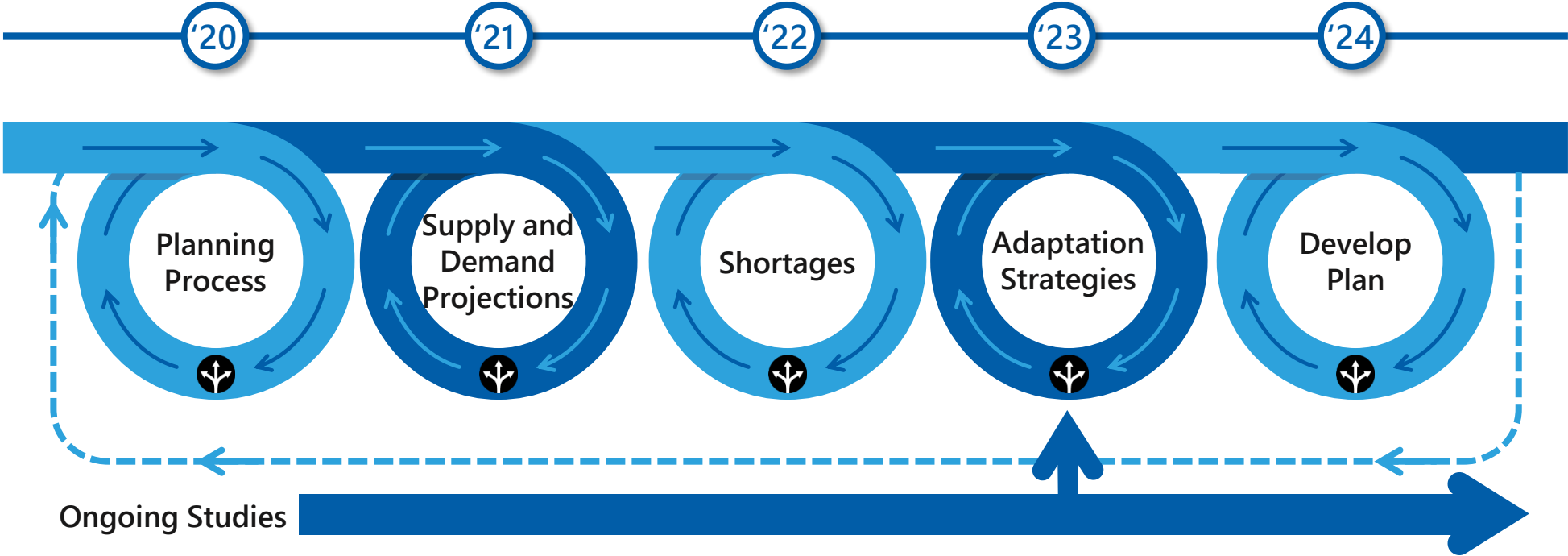
Near term plan: San Juan Chama Return Flow Project



Longer Term Planning



Local Water Planning with County: Water 2100



 Public Feedback



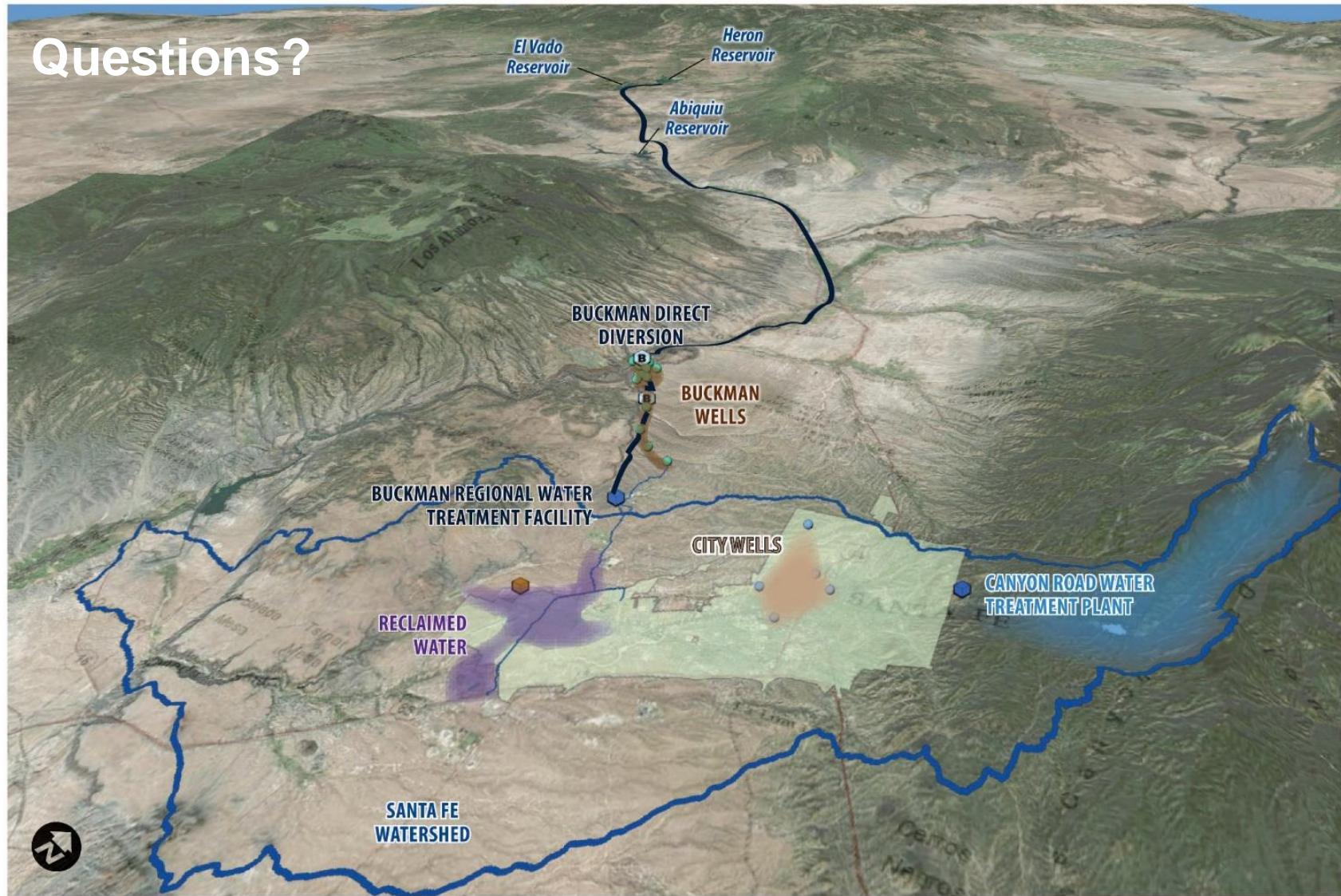
City of Santa Fe Water: Resiliency During Drought

- Since 1995, population has increased by 1/4 and our community has reduced total water use by 1/3
- For the past 5 years our demand has been below 9,000 AF/yr
- For the past 5 years, sustainable supply has been ~13,000 AF/yr
- Well levels have recovered dramatically over the past 10 years
- 4 sources of supply plus conservation make us resilient
- 5th source of supply in the works
- We require builders to expand water supply
- Actively developing and updating 40 and 80 year water resource plans

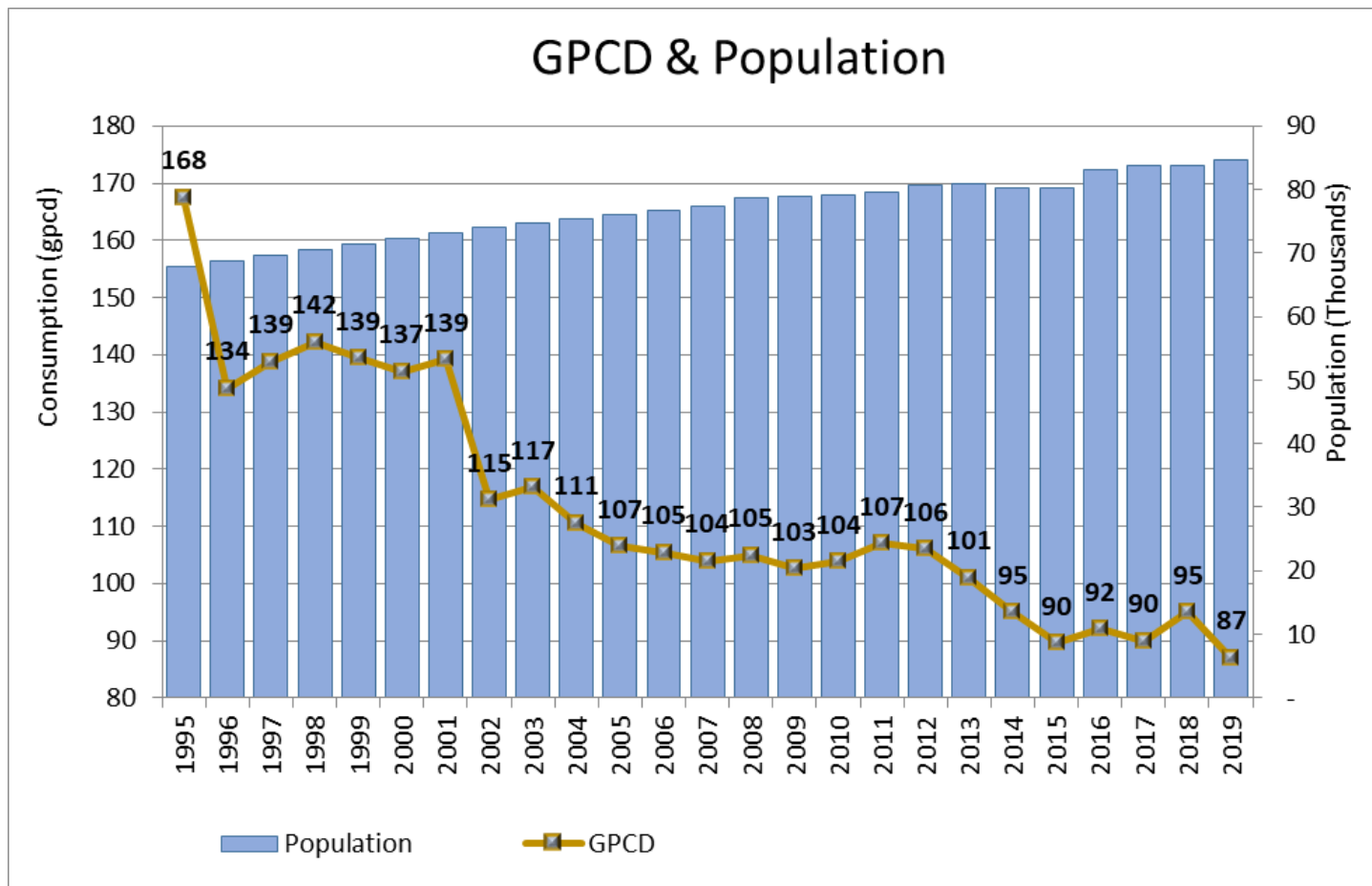


Providing a safe,
reliable, and resilient
water supply to meet
Santa Fe's needs.

Questions?

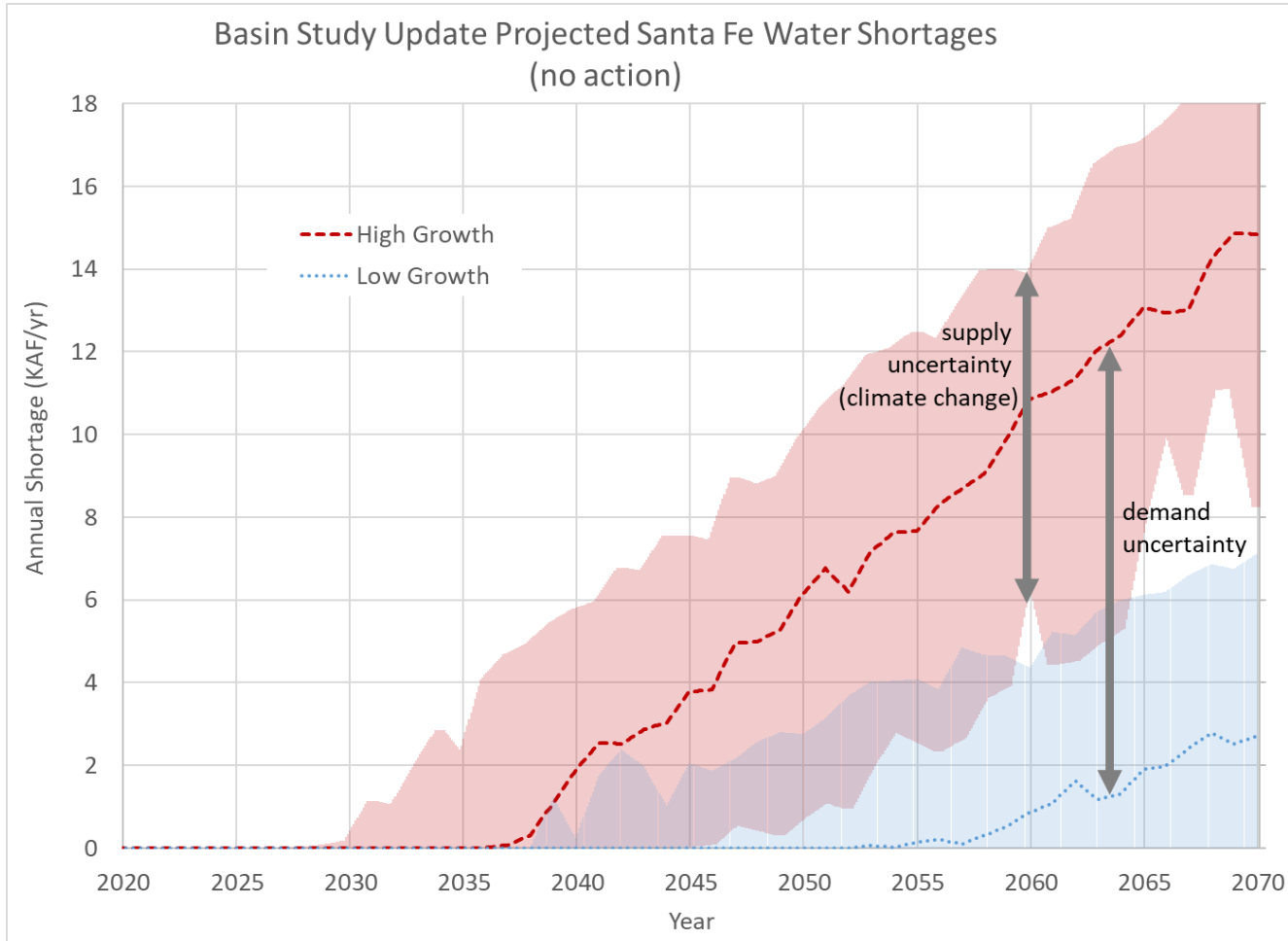


Water Conservation



Most recent planning efforts

2015 Santa Fe Basin Study and 2019 Santa Fe Basin Study Update



- Growing demand & less reliable supply will lead to shortages if we do nothing
- Best way to avoid these shortages is more efficient use of effluent