

DRAFT

Site Accessibility Evaluation
Americans with Disabilities Act
Title II (Public Services: State and Local Government)



CITY MAIN LIBRARY
145 Washington Ave
Santa Fe, NM 87501

Accessibility Evaluation
Inspectors: Daniel Lopez, Jr.

Prepared By



CITY OF SANTA FE
(505) 629 - 3854

Report Date: 02/03/2025

DRAFT

Findings	5
EXTERIOR SITE	5
E1 Path of Travel Along Washington Avenue from Nusbaum Street	5
E2 Curb Ramp Crossing at Nusbaum Street	9
E3 Path of Travel Along Marcy Street to Parking Lot Driveway	11
E4 Southeast Corner of Marcy Street and Washington Avenue Intersection	14
E5 Path of Travel Along Nusbaum Street to Driveway	15
E6 Path of Travel from Lot from Marcy Street	19
E7 Path of Travel Along Lot from Nusbaum Street	22
E8 Accessible Parking Spaces	23
Basement Level	27
B1 Office Corridors	27
B2 Men's Staff Restrooms and Lockers	31
B3 Women's Staff Restrooms and Lockers	39
1ST Level	46
F1 Main Entrance Vestibule	46
F2 Main Lobby	47
F3 Entry from Parking Lot	48
F4 Computer Area	49
F5 Microfilm and Study Area	50
F6 Ramp to Reading Room	51
F7 Copy Station Adjacent to Ramp	52

Table of Contents

F8 Drinking Fountain and Stairs to Lower Nonfiction Area	53
F9 Lower Nonfiction Area and Reading Room	54
F10 Women's Accessible Restroom	55
F11 Men's Accessible Restroom	56
F12 ELEVATOR in Main Lobby	57
F13 Central Stairs	58
F14 Stairs to Administration Offices	59
F15 Fiction and New Books Section	60
F16 Southwest Reading Room	61
F17 Ramp to Book Shelves and Exit	62
F18 Stairs to Book Shelves and Exit	63
F18 Staff Area	64
2ND Level	65
S1 Upper Floor Gallery and Corridors	65
S2 Men's Restroom	66
S3 Women's Restroom	67
S4 Tatum Community Room	68
S5 Southeast Exit Stairs	69
S6 Pick Conference Room	70
S7 Media Services	71
S8 Children's Room	72
S9 Children' Restroom and Corridor	73

Table of Contents

S10 ELEVATOR and Staff Lobby 74

S11 Southeast Exit Stairs 75

S12 Administration Office Corridors (Staff Only) 76

S13 Staff Lounge 77

S14 Staff Restroom on Right Side 78

S15 Staff Restroom on Left Side 79

Area descriptions with no section 80

Findings with no area description 80

DRAFT

EXTERIOR SITE: E1 Path of Travel Along Washington Avenue from Nusbaum Street

Finding: 1

The access aisle and/or the vehicle pull-up space surface is not firm, stable, and slip resistant.

The surfaces of the vehicle pull-up space and access aisle shall be firm, stable, and slip resistant.

2010 ADAS Section 302.1

Floor and ground surfaces shall be stable, firm, and slip resistant and shall comply with 302.

2010 ADAS Section 503.4

Vehicle pull-up spaces and access aisles serving them shall comply with 302. Access aisles shall be at the same level as the vehicle pull-up space they serve. Changes in level are not permitted.

Citation:

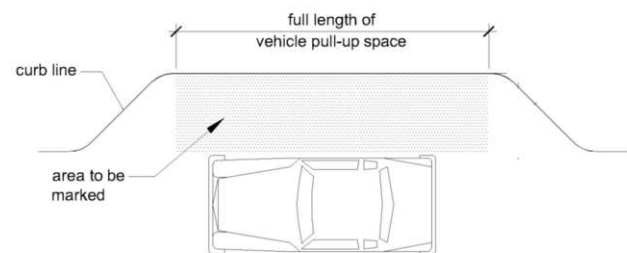
2010 ADAS Section: 302.1, 503.4

As Built:

Access aisle is not clearly visible or defined and also irregular surface in pavement need to be addressed.

Recommendation:

Clean, refinish and redefine the surface of Passenger Loading Zone.



EXTERIOR SITE: E1 Path of Travel Along Washington Avenue from Nusbaum Street

Finding: 2

The accessible path of travel has cross slopes greater than 2%.

Surface cross slopes shall not exceed one unit vertical in 48 units horizontal (2-percent slope). When the slope in the direction of travel of any walk exceeds 1 unit vertical in 20 units horizontal (5-percent slope), it must be constructed as a ramp.

2010 ADAS Section 403.3

The running slope of walking surfaces shall not be steeper than 1:20. The cross slope of walking surfaces shall not be steeper than 1:48.

Citation:

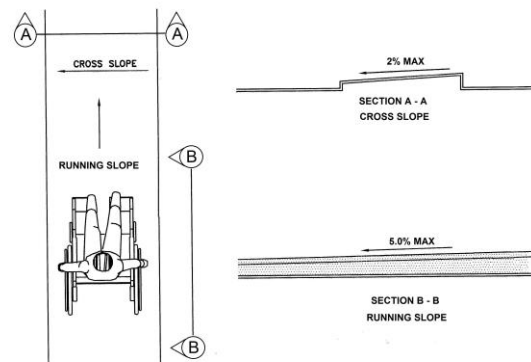
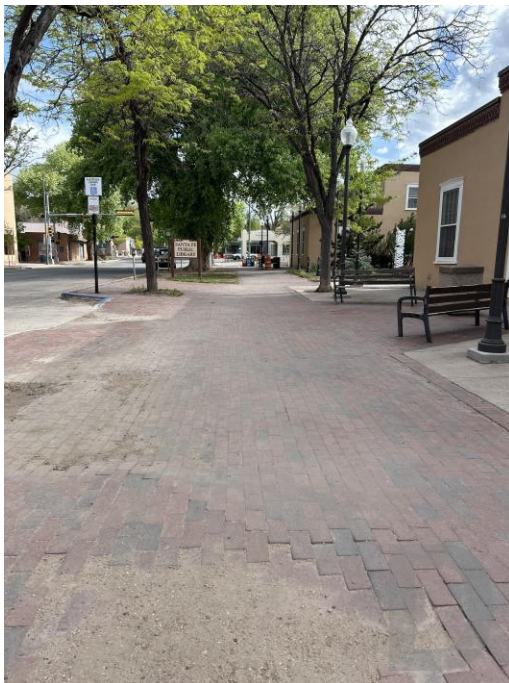
2010 ADAS Section: 403.3

As Built:

The cross slope of the pedestrian access route exceeds the maximum required slope of 2% due to the brick pavers

Recommendation:

Repair and correct pavers as necessary to not exceed the required maximum cross slope of 2%



EXTERIOR SITE: E1 Path of Travel Along Washington Avenue from Nusbaum Street

Finding: 3

The truncated domes do not have the correct spacing.

Truncated domes in a detectable warning surface shall have a center-to-center spacing of 1.6 inches minimum and 2.4 inches maximum, and a base-to-base spacing of 0.65 inch minimum, measured between the most adjacent domes on a square grid.

2010 ADAS Section 705.1.2

Truncated domes in a detectable warning surface shall have a center-to-center spacing of 1.6 inches (41 mm) minimum and 2.4 inches (61 mm) maximum, and a base-to-base spacing of 0.65 inch (17 mm) minimum, measured between the most adjacent domes on a square grid.

Citation:

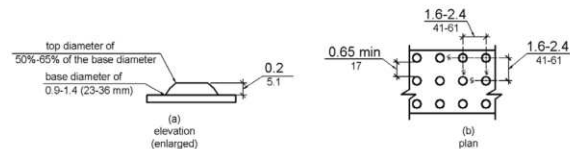
2010 ADAS Section: 705.1.2

As Built:

Passenger Loading Zone has no truncated domes

Recommendation:

Install truncated domes 36' wide band, contrasting color, band of domes between pedestrian and vehicular area.



EXTERIOR SITE: E1 Path of Travel Along Washington Avenue from Nusbaum Street

Finding: 4

The walkway contains abrupt vertical edges and/or variations over a 1/2 inch.

1/4 inch is the maximum vertical rise. Changes in level between 1/4 inch and 1/2 inch must be beveled at 1:2 or less.

Changes in level greater than 1/2 inch must be by way of a ramp.

2010 ADAS Section 303.3

Changes in level between 1/4 inch (6.4 mm) high minimum and 1/2 inch (13 mm) high maximum shall be beveled with a slope not steeper than 1:2.

2010 ADAS Section 303.2

Changes in level of 1/4 inch (6.4 mm) high maximum shall be permitted to be vertical.

Citation:

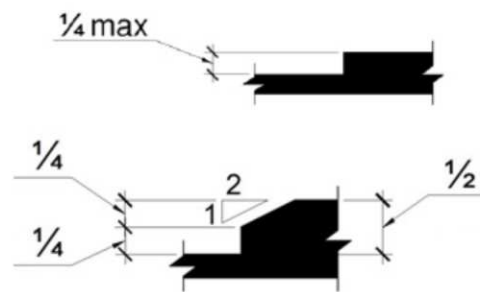
2010 ADAS Section: 303.3, 303.2

As Built:

Vertical changes in level exceeds 1/2 inches in the pedestrian access route at passenger loading zone.

Recommendation:

Modify, repair, or resurface to provide a level surface with vertical changes not to exceed 1/4" in height.



EXTERIOR SITE: E2 Curb Ramp Crossing at Nusbaum Street

Finding: 5

The perpendicular curb ramp is not nearly compliant.

The curb ramp has running and cross slopes that exceed the maximum allowable requirements. The flared sides have excessive slope. The curb ramp is not the minimum required width. There is no top landing or the top landing is not the correct dimensions and/or contains excessive slope. The curb ramps floor or ground surface is not firm, stable, or slip resistant. The floor or ground surface contains changes in level or gaps that exceed the allowable maximum requirements.

2010 ADAS Section 406.1

Curb ramps on accessible routes shall comply with 406, 405.2 through 405.5, and 405.10.

Citation:

2010 ADAS Section: 406.1

As Built:

Running slope is 11.4%, Change in level exceeds 1/2 inches

Recommendation:

Demolish existing and provide a new curb ramp, including detectable warning surfaces and the required landings (top and bottom)



EXTERIOR SITE: E2 Curb Ramp Crossing at Nusbaum Street

Finding: 6

The perpendicular curb ramp is not nearly compliant.

The curb ramp has running and cross slopes that exceed the maximum allowable requirements. The flared sides have excessive slope. The curb ramp is not the minimum required width. There is no top landing or the top landing is not the correct dimensions and/or contains excessive slope. The curb ramps floor or ground surface is not firm, stable, or slip resistant. The floor or ground surface contains changes in level or gaps that exceed the allowable maximum requirements.

2010 ADAS Section 406.1

Curb ramps on accessible routes shall comply with 406, 405.2 through 405.5, and 405.10.

Citation:

2010 ADAS Section: 406.1

As Built:

Running slope is 8.4%, flared sides slopes are 26.2% and 24.5% and gutter cross slope is 4.3%

Recommendation:

Demolish existing and provide a new curb ramp, including detectable warning surfaces and the required landings (top and bottom)



EXTERIOR SITE: E3 Path of Travel Along Marcy Street to Parking Lot Driveway

Finding: 7

The accessible path of travel has cross slopes greater than 2%.

Surface cross slopes shall not exceed one unit vertical in 48 units horizontal (2-percent slope). When the slope in the direction of travel of any walk exceeds 1 unit vertical in 20 units horizontal (5-percent slope), it must be constructed as a ramp.

2010 ADAS Section 403.3

The running slope of walking surfaces shall not be steeper than 1:20. The cross slope of walking surfaces shall not be steeper than 1:48.

Citation:

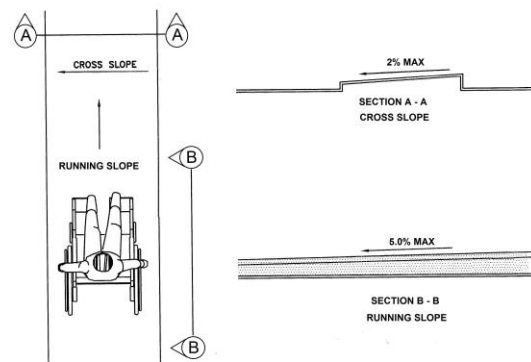
2010 ADAS Section: 403.3

As Built:

At drive way location, cross slope is 2.9%

Recommendation:

N/A - Refer to Finding



EXTERIOR SITE: E3 Path of Travel Along Marcy Street to Parking Lot Driveway

Finding: 8

The accessible path of travel has cross slopes greater than 2%.

Surface cross slopes shall not exceed one unit vertical in 48 units horizontal (2-percent slope). When the slope in the direction of travel of any walk exceeds 1 unit vertical in 20 units horizontal (5-percent slope), it must be constructed as a ramp.

2010 ADAS Section 403.3

The running slope of walking surfaces shall not be steeper than 1:20. The cross slope of walking surfaces shall not be steeper than 1:48.

Citation:

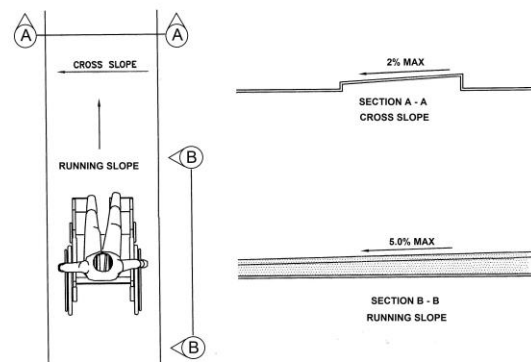
2010 ADAS Section: 403.3

As Built:

Adjacent to driveway, portions of the brick paved route are 5.6% or greater.

Recommendation:

N/A - Refer to Finding



EXTERIOR SITE: E3 Path of Travel Along Marcy Street to Parking Lot Driveway

Finding: 9

The walkway contains abrupt vertical edges and/or variations over 1/4 inch.

1/4 inch is the maximum vertical rise. Changes in level between 1/4 inch and 1/2 inch must be beveled at 1:2 or less.

Changes in level greater than 1/2 inch must be by way of a ramp.

2010 ADAS Section 303.3

Changes in level between 1/4 inch (6.4 mm) high minimum and 1/2 inch (13 mm) high maximum shall be beveled with a slope not steeper than 1:2.

2010 ADAS Section 303.2

Changes in level of 1/4 inch (6.4 mm) high maximum shall be permitted to be vertical.

Citation:

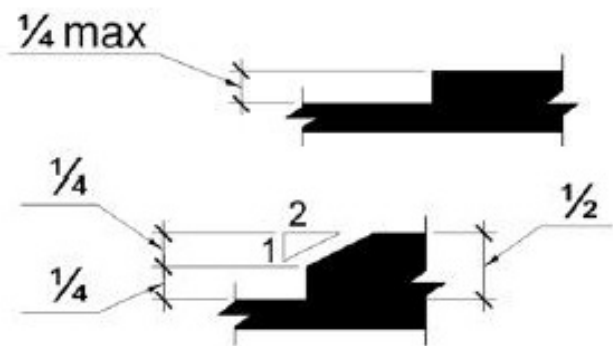
2010 ADAS Section: 303.3, 303.2

As Built:

Due to tree planters, pedestrians access route have vertical changes that exceed 2/4 inches

Recommendation:

N/A - Refer to Finding



EXTERIOR SITE: E4 Southeast Corner of Marcy Street and Washington Avenue Intersection

Finding: 10

The perpendicular curb ramp is not nearly compliant.

The curb ramp has running and cross slopes that exceed the maximum allowable requirements. The flared sides have excessive slope. The curb ramp is not the minimum required width. There is no top landing or the top landing is not the correct dimensions and/or contains excessive slope. The curb ramps floor or ground surface is not firm, stable, or slip resistant. The floor or ground surface contains changes in level or gaps that exceed the allowable maximum requirements.

2010 ADAS Section 406.1

Curb ramps on accessible routes shall comply with 406, 405.2 through 405.5, and 405.10.

Citation:

2010 ADAS Section: 406.1

As Built:

Detectable Warnings are present. Slope on flare(s) along curb ramp exceed 10%

Recommendation:

N/A - Refer to Finding



EXTERIOR SITE: E5 Path of Travel Along Nusbaum Street to Driveway

Finding: 11

The walkway contains abrupt vertical edges and/or variations over 1/4 inch.

1/4 inch is the maximum vertical rise. Changes in level between 1/4 inch and 1/2 inch must be beveled at 1:2 or less.

Changes in level greater than 1/2 inch must be by way of a ramp.

2010 ADAS Section 303.3

Changes in level between 1/4 inch (6.4 mm) high minimum and 1/2 inch (13 mm) high maximum shall be beveled with a slope not steeper than 1:2.

2010 ADAS Section 303.2

Changes in level of 1/4 inch (6.4 mm) high maximum shall be permitted to be vertical.

Citation:

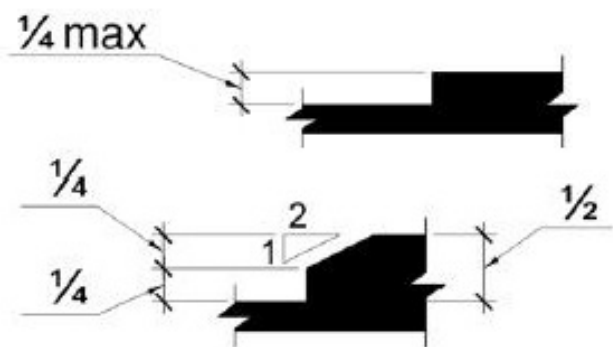
2010 ADAS Section: 303.3, 303.2

As Built:

Throughout route existence of various change in elevation exceeding 1/4 inches in height due to tree planters, etc.

Recommendation:

N/A - Refer to Finding



EXTERIOR SITE: E5 Path of Travel Along Nusbaum Street to Driveway

Finding: 12

The route of travel does not provide the required minimum width.

The minimum clear width for sidewalks and walks is 36 inches.

However, clear width shall be permitted to be reduced to 32 inches minimum for a length of 24 inches maximum provided that reduced width segments are separated by segments that are 48 inches long minimum and 36 inches wide minimum.

2010 ADAS Section 403.5.1

Except as provided in 403.5.2 and 403.5.3, the clear width of walking surfaces shall be 36 inches (915 mm) minimum.

2010 ADAS Section 403.5.1 Exception

The clear width shall be permitted to be reduced to 32 inches (815 mm) minimum for a length of 24 inches (610 mm) maximum provided that reduced width segments are separated by segments that are 48 inches (1220 mm) long minimum and 36 inches (915 mm) wide minimum.

Citation:

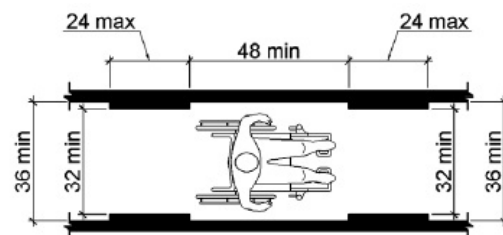
2010 ADAS Section: 403.5.1, 403.5.1 Exception

As Built:

At tree planters, width is reduced to 28 inches

Recommendation:

N/A - Refer to Finding



EXTERIOR SITE: E5 Path of Travel Along Nusbaum Street to Driveway

Finding: 13

The accessible path of travel has cross slopes greater than 2%.

Surface cross slopes shall not exceed one unit vertical in 48 units horizontal (2-percent slope). When the slope in the direction of travel of any walk exceeds 1 unit vertical in 20 units horizontal (5-percent slope), it must be constructed as a ramp.

2010 ADAS Section 403.3

The running slope of walking surfaces shall not be steeper than 1:20. The cross slope of walking surfaces shall not be steeper than 1:48.

Citation:

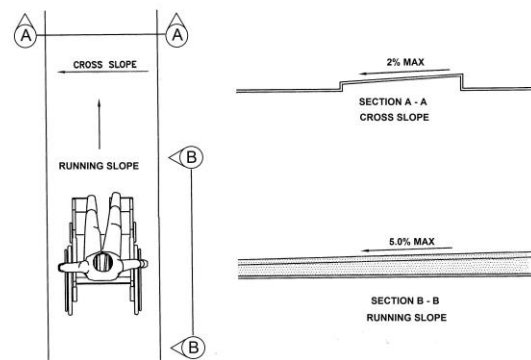
2010 ADAS Section: 403.3

As Built:

Throughout pedestrian route the cross slope exceeds 2%

Recommendation:

N/A - Refer to Finding



EXTERIOR SITE: E5 Path of Travel Along Nusbaum Street to Driveway

Finding: 14

The accessible path of travel has cross slopes greater than 2%.

Surface cross slopes shall not exceed one unit vertical in 48 units horizontal (2-percent slope). When the slope in the direction of travel of any walk exceeds 1 unit vertical in 20 units horizontal (5-percent slope), it must be constructed as a ramp.

2010 ADAS Section 403.3

The running slope of walking surfaces shall not be steeper than 1:20. The cross slope of walking surfaces shall not be steeper than 1:48.

Citation:

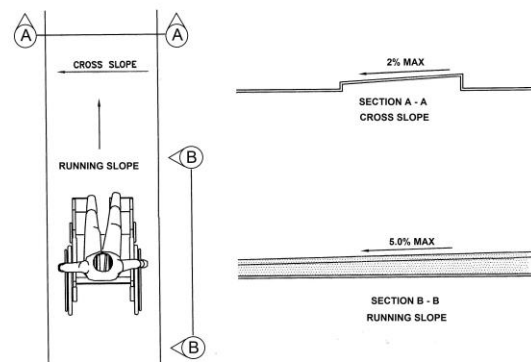
2010 ADAS Section: 403.3

As Built:

At driveway, the cross slope is 8.7% which exceeds the 2% requirements

Recommendation:

N/A - Refer to Finding



EXTERIOR SITE: E6 Path of Travel from Lot from Marcy Street

Finding: 15

The accessible path of travel has cross slopes greater than 2%.

Surface cross slopes shall not exceed one unit vertical in 48 units horizontal (2-percent slope). When the slope in the direction of travel of any walk exceeds 1 unit vertical in 20 units horizontal (5-percent slope), it must be constructed as a ramp.

2010 ADAS Section 403.3

The running slope of walking surfaces shall not be steeper than 1:20. The cross slope of walking surfaces shall not be steeper than 1:48.

Citation:

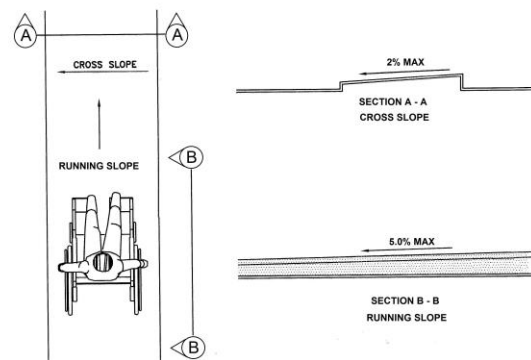
2010 ADAS Section: 403.3

As Built:

At driveway, the cross slope is 4.5%

Recommendation:

N/A - Refer to Finding



EXTERIOR SITE: E6 Path of Travel from Lot from Marcy Street

Finding: 16

The accessible path of travel has cross slopes greater than 2%.

Surface cross slopes shall not exceed one unit vertical in 48 units horizontal (2-percent slope). When the slope in the direction of travel of any walk exceeds 1 unit vertical in 20 units horizontal (5-percent slope), it must be constructed as a ramp.

2010 ADAS Section 403.3

The running slope of walking surfaces shall not be steeper than 1:20. The cross slope of walking surfaces shall not be steeper than 1:48.

Citation:

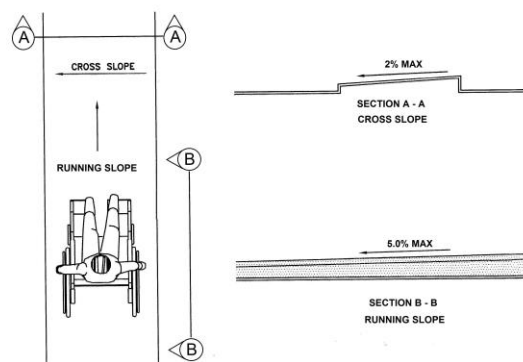
2010 ADAS Section: 403.3

As Built:

Throughout pedestrian route, the cross slope exceeds 2%

Recommendation:

N/A - Refer to Finding



EXTERIOR SITE: E6 Path of Travel from Lot from Marcy Street

Finding: 17

The walking surface is obstructed. A 36 inch wide minimum walking surface is required.

2010 ADAS Section 403.5.1

Except as provided in 403.5.2 and 403.5.3, the clear width of walking surfaces shall be 36 inches (915 mm) minimum.

Citation:

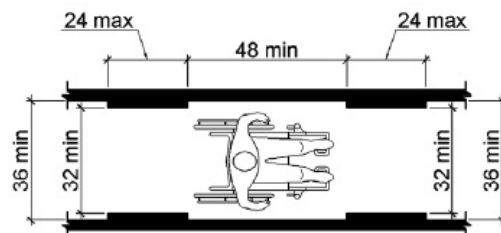
2010 ADAS Section: 403.5.1

As Built:

Existence of a trash bin has reduced the walking surface to 31.5 inches

Recommendation:

N/A - Refer to Finding



EXTERIOR SITE: E7 Path of Travel Along Lot from Nusbaum Street

Finding: 18

The accessible path of travel has cross slopes greater than 2%.

Surface cross slopes shall not exceed one unit vertical in 48 units horizontal (2-percent slope). When the slope in the direction of travel of any walk exceeds 1 unit vertical in 20 units horizontal (5-percent slope), it must be constructed as a ramp.

2010 ADAS Section 403.3

The running slope of walking surfaces shall not be steeper than 1:20. The cross slope of walking surfaces shall not be steeper than 1:48.

Citation:

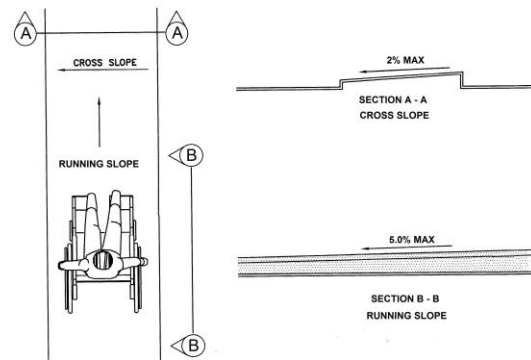
2010 ADAS Section: 403.3

As Built:

Exiting cross exceed 2%

Recommendation:

N/A - Refer to Finding



EXTERIOR SITE: E8 Accessible Parking Spaces

Finding: 19

The surfaces of the accessible parking spaces and access aisles are not firm, stable, and slip resistant.

Floor and ground surfaces shall be stable, firm, and slip resistant

Parking spaces and access aisles serving them shall comply with 302. Access aisles shall be at the same level as the parking spaces they serve. Changes in level are not permitted.

2010 ADAS Section 302.1

Floor and ground surfaces shall be stable, firm, and slip resistant and shall comply with 302.

2010 ADAS Section 502.4

Parking spaces and access aisles serving them shall comply with 302. Access aisles shall be at the same level as the parking spaces they serve. Changes in level are not permitted.

Citation:

2010 ADAS Section: 302.1, 502.4

As Built:

Lot has 28 regular parking spaces, one maintenance staff space and 3 accessible parking space(which includes 1 Van Accessible Space)

Recommendation:

On May 9, 2024, Parking Lot was replaced and re-stripped. Accessible Parking spaces were corrected to comply.



EXTERIOR SITE: E8 Accessible Parking Spaces

Finding: 20

The accessible route has running slopes greater than 5% and has not been constructed as a ramp (i.e. handrails, edge protection, etc.). Cross slopes are greater than 2% across the width of the walk.

When the slope in the direction of travel of any walk exceeds 1 unit vertical in 20 units horizontal (5-percent slope), it must be constructed as a ramp. Surface cross slopes must not exceed 1 unit vertical in 48 units horizontal (2-percent slope).

2010 ADAS Section 403.3

The running slope of walking surfaces shall not be steeper than 1:20. The cross slope of walking surfaces shall not be steeper than 1:48.

Citation:

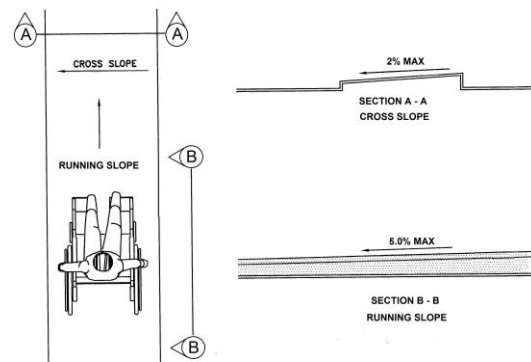
2010 ADAS Section: 403.3

As Built:

On May 9, 2024, Parking Lot was repaved. Cross & Running slopes were corrected to comply.

Recommendation:

N/A - Refer to Finding



EXTERIOR SITE: E8 Accessible Parking Spaces

Finding: 21

The surface at the bottom of the curb ramp exceeds a 5% slope immediately adjacent to the curb ramp.

Counter slopes of adjoining gutters and road surfaces immediately adjacent to the curb ramp shall not be steeper than 1:20. The adjacent surfaces at transitions at curb ramps to walks, gutters, and streets shall be at the same level.

2010 ADAS Section 406.2

Counter slopes of adjoining gutters and road surfaces immediately adjacent to the curb ramp shall not be steeper than 1:20. The adjacent surfaces at transitions at curb ramps to walks, gutters, and streets shall be at the same level.

Citation:

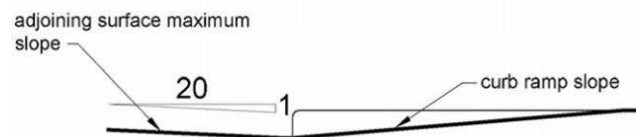
2010 ADAS Section: 406.2

As Built:

Current slope is 9.2%

Recommendation:

N/A - Refer to Finding



EXTERIOR SITE: E8 Accessible Parking Spaces

Finding: 22

The truncated domes are not aligned in a square grid pattern.

Truncated domes shall be aligned in a square grid pattern.

2010 ADAS Section 705.1.2

Truncated domes in a detectable warning surface shall have a center-to-center spacing of 1.6 inches (41 mm) minimum and 2.4 inches (61 mm) maximum, and a base-to-base spacing of 0.65 inch (17 mm) minimum, measured between the most adjacent domes on a square grid.

Citation:

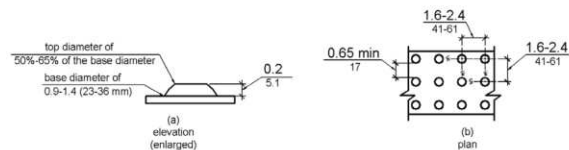
2010 ADAS Section: 705.1.2

As Built:

Ramp enters a traffic area. Currently, no detectable warning is provided.

Recommendation:

N/A - Refer to Finding



Basement Level: B1 Office Corridors

Finding: 23

The knee clearance is not a minimum of 27 inches above the finished floor.

The knee clearance shall be 11 inches deep minimum at 9 inches above the finish floor or ground, and 8 inches deep minimum at 27 inches above the finish floor or ground and 30 inches wide minimum.

Between 9 inches and 27 inches above the finish floor or ground, the knee clearance shall be permitted to reduce at a rate of 1 inch in depth for each 6 inches in height.

2010 ADAS Section 306.3.3

Where knee clearance is required under an element as part of a clear floor space, the knee clearance shall be 11 inches (280 mm) deep minimum at 9 inches (230 mm) above the finish floor or ground, and 8 inches (205 mm) deep minimum at 27 inches (685 mm) above the finish floor or ground.

Citation:

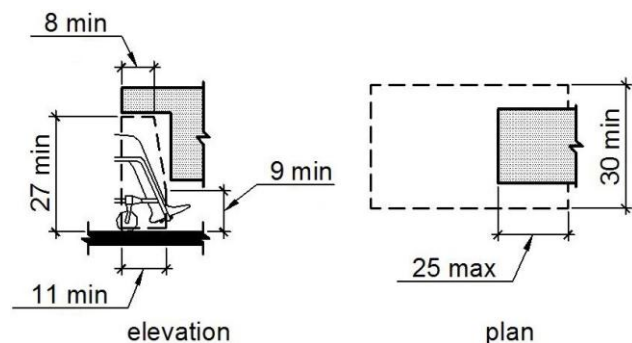
2010 ADAS Section: 306.3.3

As Built:

Desk surface is 35.5 from floor and knee space height is 33 inches.

Recommendation:

N/A - Refer to Finding



Basement Level: B1 Office Corridors

Finding: 24

The door/gate operating hardware is not accessible.

Hand-activated door/gate opening hardware, handles, pulls, latches, locks, and other operating devices on accessible doors shall have a shape that is easy to grasp with one hand and does not require tight grasping, pinching or twisting of the wrist to operate. Hardware shall be 34 inches minimum and 48 inches maximum above the finish floor or ground.

2010 ADAS Section 404.2.7

Handles, pulls, latches, locks, and other operable parts on doors and gates shall comply with 309.4. Operable parts of such hardware shall be 34 inches (865 mm) minimum and 48 inches (1220 mm) maximum above the finish floor or ground. Where sliding doors are in the fully open position, operating hardware shall be exposed and usable from both sides.

Citation:

2010 ADAS Section: 404.2.7

As Built:

Throughout basement, the door hardware are round knobs.

Recommendation:

N/A - Refer to Finding



Basement Level: B1 Office Corridors

Finding: 25

Compliant room identification signs are missing.

Sign shall be located alongside the door at the latch side. Where a tactile sign is provided at double doors with one active leaf, the sign shall be located on the inactive leaf. Where a tactile sign is provided at double doors with two active leaves, the sign shall be located to the right of the right hand door. Where there is no wall space at the latch side of a single door or at the right side of double doors, signs shall be located on the nearest adjacent wall. Signs containing tactile characters shall be located so that a clear floor space of 18 inches minimum by 18 inches minimum, centered on the tactile characters, is provided beyond the arc of any door swing between the closed position and 45 degree open position.

Wall signs identifying permanent rooms and spaces of a building shall be in a horizontal format and the characters raised 1/32 inch minimum and shall be sans serif uppercase characters a minimum of 5/8 inch and a maximum of 2 inches high. Contracted Grade 2 Braille shall be in a horizontal format and shall be placed a minimum of 3/8 inch and a maximum of 1/2 inch directly below the tactile characters; flush left or centered. Dots shall be 1/10 inch on center in each cell with 2/10-inch space between cells, measured from the second column of dots in the first cell to the first column of dots in the second cell. Dots shall be raised a minimum of 1/40 inch above the background. Braille dots shall be domed or rounded. Signs with raised characters or Braille shall be located 48 inches minimum above the finish floor or ground surface, measured from the baseline of the lowest tactile character and 60 inches maximum above the finish floor or ground surface, measured from the baseline of the highest tactile character.

2010 ADAS Section 216.2

Interior and exterior signs identifying permanent rooms and spaces shall comply with 703.1, 703.2, and 703.5. Where pictograms are provided as designations of permanent interior rooms and spaces, the pictograms shall comply with 703.6 and shall have text descriptors complying with 703.2 and 703.5.

2010 ADAS Section 703.4.2

Where a tactile sign is provided at a door, the sign shall be located alongside the door at the latch side. Where a tactile sign is provided at double doors with one active leaf, the sign shall be located on the inactive leaf. Where a tactile sign is provided at double doors with two active leaves, the sign shall be located to the right of the right hand door. Where there is no wall space at the latch side of a single door or at the right side of double doors, signs shall be located on the nearest adjacent wall. Signs containing tactile characters shall be located so that a clear floor space of 18 inches (455 mm) minimum by 18 inches (455 mm) minimum, centered on the tactile characters, is provided beyond the arc of any door swing between the closed position and 45 degree open position.

Citation:

2010 ADAS Section: 216.2, 703.4.2

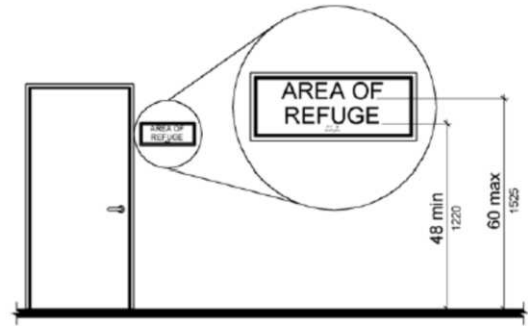
As Built:

Throughout floor no accessible signage is provided

Recommendation:

N/A - Refer to Finding

Finding: 25 (Continued)



DRAFT

Basement Level: B2 Men's Staff Restrooms and Lockers

Finding: 26

The door exceeds the maximum allowable opening force.

Interior doors shall have a maximum opening force of 5 pounds.

These forces do not apply to the force required to retract latch bolts or disengage other devices that hold the door or gate in a closed position.

2010 ADAS Section 404.2.9

Fire doors shall have a minimum opening force allowable by the appropriate administrative authority. The force for pushing or pulling open a door or gate other than fire doors shall be as follows: 1. Interior hinged doors and gates: 5 pounds (22.2 N) maximum. 2. Sliding or folding doors: 5 pounds (22.2 N) maximum. These forces do not apply to the force required to retract latch bolts or disengage other devices that hold the door or gate in a closed position.

Citation:

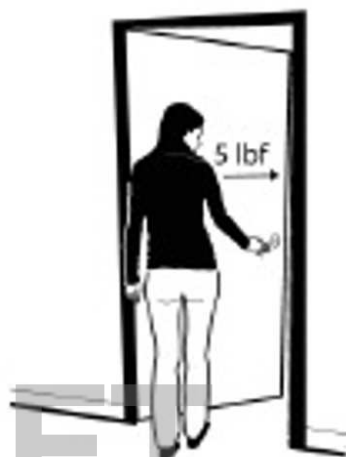
2010 ADAS Section: 404.2.9

As Built:

Push Pressure measured 12 lbs

Recommendation:

N/A - Refer to Finding



Basement Level: B2 Men's Staff Restrooms and Lockers

Finding: 27

The water and drain pipes under the lavatory are not adequately insulated.

Water supply and drain pipes under lavatories and sinks shall be insulated or otherwise configured to protect against contact. There shall be no sharp or abrasive surfaces under lavatories and sinks.

2010 ADAS Section 606.5

Water supply and drain pipes under lavatories and sinks shall be insulated or otherwise configured to protect against contact. There shall be no sharp or abrasive surfaces under lavatories and sinks.

Citation:

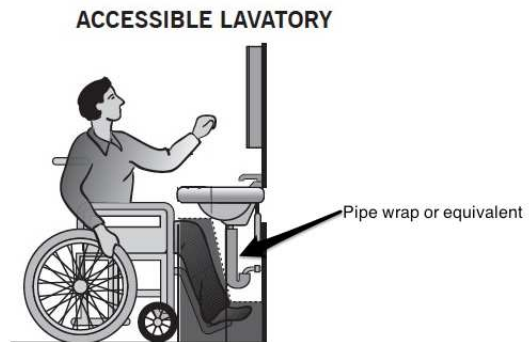
2010 ADAS Section: 606.5

As Built:

Not insulated

Recommendation:

N/A - Refer to Finding



Basement Level: B2 Men's Staff Restrooms and Lockers

Finding: 28

The bench seat is not within compliant height range.

The top of the bench seat must be 17 inches minimum to 19 inches maximum above the finish floor.

2010 ADAS Section 903.5

The top of the bench seat surface shall be 17 inches (430 mm) minimum and 19 inches (485 mm) maximum above the finish floor or ground.

Citation:

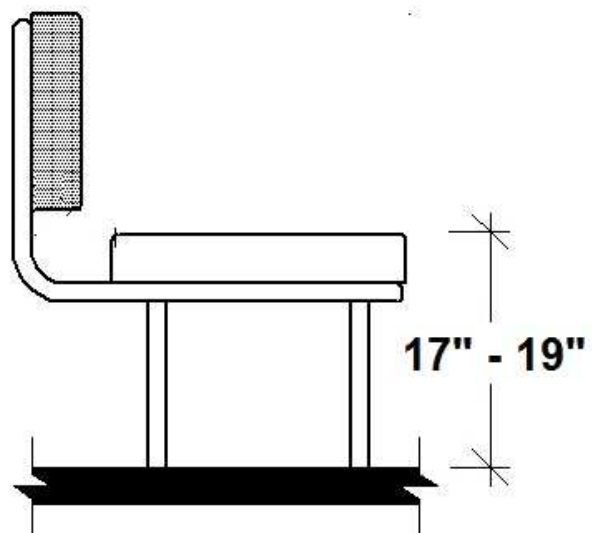
2010 ADAS Section: 903.5

As Built:

19 inches

Recommendation:

N/A - Refer to Finding



Basement Level: B2 Men's Staff Restrooms and Lockers

Finding: 29

The bench is not the required depth.

Benches shall have seats that are 42 inches long minimum and 20 inches deep minimum and 24 inches deep maximum.

2010 ADAS Section 903.3

Benches shall have seats that are 42 inches (1065 mm) long minimum and 20 inches (510 mm) deep minimum and 24 inches (610 mm) deep maximum.

Citation:

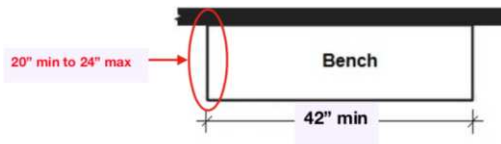
2010 ADAS Section: 903.3

As Built:

11.5 inches

Recommendation:

N/A - Refer to Finding



Basement Level: B2 Men's Staff Restrooms and Lockers

Finding: 30

Accessible lockers are not provided.

5% but not less than one of each type of locker must be accessible. Lockers of different size are considered different types.

Although not specifically required, it is considered "best practices" that accessible elements be identified to prevent confusion for those needing accessible elements and to indicate to those that do not need accessible elements that they should only be used if others are unavailable.

2010 ADAS Section 225.2.1

Where lockers are provided, at least 5 percent, but no fewer than one of each type, shall comply with 811.

Citation:

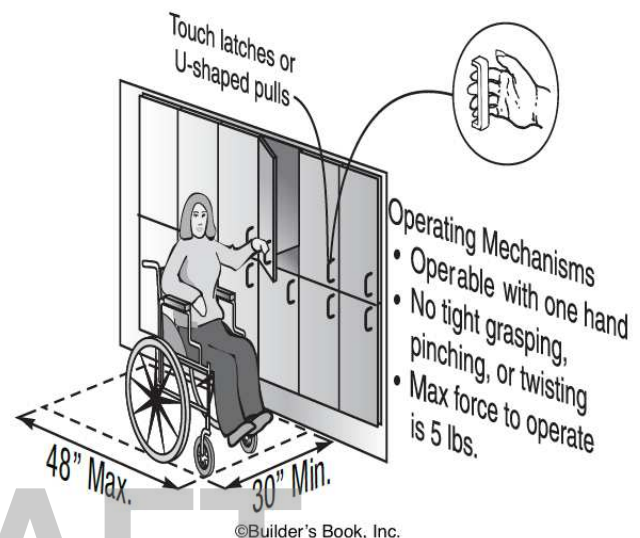
2010 ADAS Section: 225.2.1

As Built:

None

Recommendation:

N/A - Refer to Finding



Basement Level: B2 Men's Staff Restrooms and Lockers

Finding: 31

The transfer shower compartment is not the minimum required size.

Transfer type shower compartments shall be 36 inches by 36 inches clear inside dimensions measured at the center points of opposing sides and shall have a 36 inch wide minimum entry on the face of the shower compartment.

2010 ADAS Section 608.2.1

Transfer type shower compartments shall be 36 inches (915 mm) by 36 inches (915 mm) clear inside dimensions measured at the center points of opposing sides and shall have a 36 inch (915 mm) wide minimum entry on the face of the shower compartment. Clearance of 36 inches (915 mm) wide minimum by 48 inches (1220 mm) long minimum measured from the control wall shall be provided.

Citation:

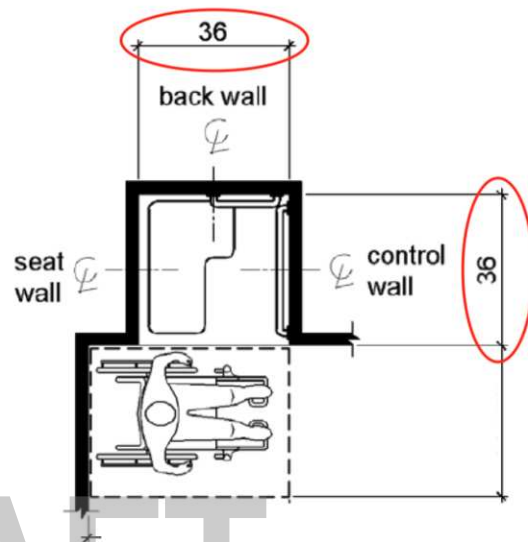
2010 ADAS Section: 608.2.1

As Built:

Currently 36 inches wide and 34 inches deep

Recommendation:

N/A - Refer to Finding



Note: Inside finished dimensions measured at the center points of opposing sides.

Basement Level: B2 Men's Staff Restrooms and Lockers

Finding: 32

The mirror is mounted above the maximum allowable height.

Mirrors must have the bottom edge of the reflecting surface a maximum of 40 inches above the floor if above a sink or counter. Mirrors not located above lavatories or countertops shall be installed with the bottom edge of the reflecting surface 35 inches maximum above the finish floor or ground.

2010 ADAS Section 603.3

Mirrors located above lavatories or countertops shall be installed with the bottom edge of the reflecting surface 40 inches (1015 mm) maximum above the finish floor or ground. Mirrors not located above lavatories or countertops shall be installed with the bottom edge of the reflecting surface 35 inches (890 mm) maximum above the finish floor or ground.

Citation:

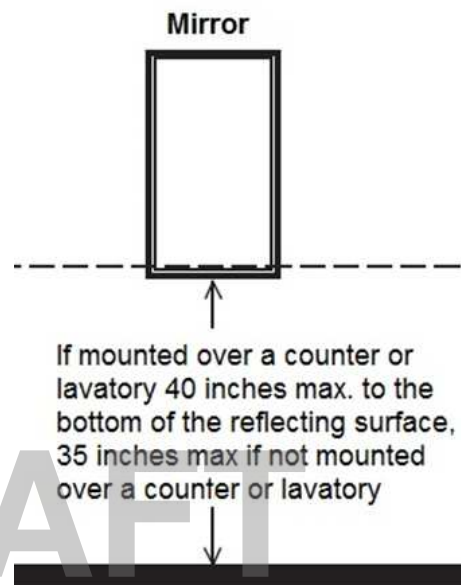
2010 ADAS Section: 603.3

As Built:

Mirror heights bottom 42 inches and top is 66 inches.

Recommendation:

N/A - Refer to Finding



Basement Level: B2 Men's Staff Restrooms and Lockers

Finding: 33

The compartment stall is not nearly compliant.

The stall does not have the required minimum clear floor space or maneuvering clearances for the toilet. Grab bars are missing and/or incorrectly installed, accessories, such as toilet seat covers, toilet paper holders, and garbage cans are either too high, without clear floor space or both, the floor level changes greater than a 1/2 inch at the floor drains.

2010 ADAS Section 603.1

Toilet and bathing rooms shall comply with 603.

Citation:

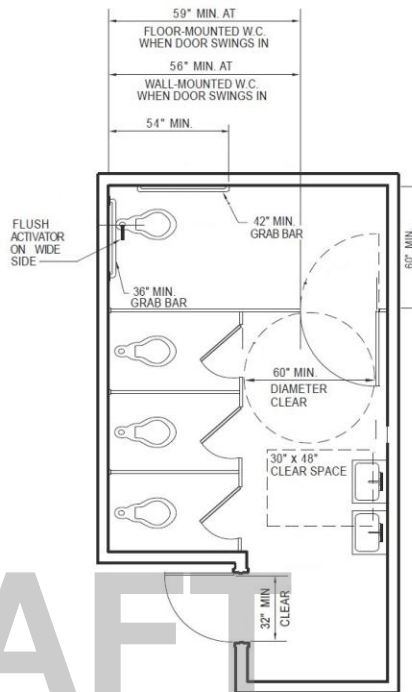
2010 ADAS Section: 603.1

As Built:

N/A

Recommendation:

N/A - Refer to Finding



Basement Level: B3 Women's Staff Restrooms and Lockers

Finding: 34

The door exceeds the maximum allowable opening force.

Interior doors shall have a maximum opening force of 5 pounds.

These forces do not apply to the force required to retract latch bolts or disengage other devices that hold the door or gate in a closed position.

2010 ADAS Section 404.2.9

Fire doors shall have a minimum opening force allowable by the appropriate administrative authority. The force for pushing or pulling open a door or gate other than fire doors shall be as follows: 1. Interior hinged doors and gates: 5 pounds (22.2 N) maximum. 2. Sliding or folding doors: 5 pounds (22.2 N) maximum. These forces do not apply to the force required to retract latch bolts or disengage other devices that hold the door or gate in a closed position.

Citation:

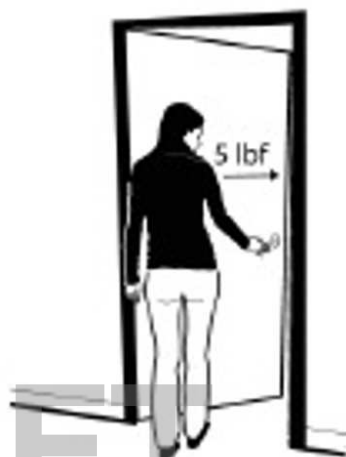
2010 ADAS Section: 404.2.9

As Built:

N/A

Recommendation:

N/A - Refer to Finding



Basement Level: B3 Women's Staff Restrooms and Lockers

Finding: 35

The maneuvering clearance on the pull side of the door extends less than 18 inches beyond the latch side of the door.

Maneuvering space for interior doors on the pull side with a front approach must be flat (2% max. slope in any direction) for a minimum distance of 60 inches in the direction of travel. The width of the maneuvering space must be as wide as the door plus an additional 18 inches on the latch side. This latch side clearance must also be flat (2% max. slope in any direction) and clear of obstructions.

2010 ADAS Section 404.2.4.1

Swinging doors and gates shall have maneuvering clearances complying with Table 404.2.4.1.

Citation:

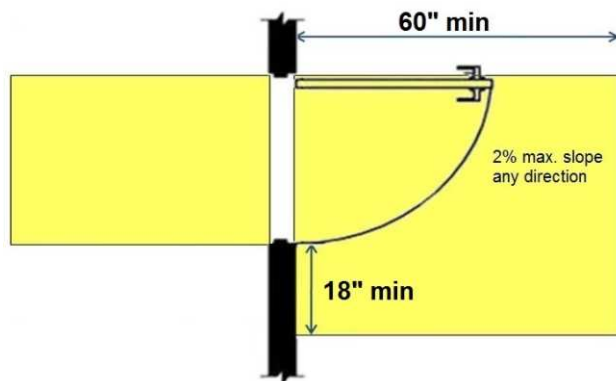
2010 ADAS Section: 404.2.4.1

As Built:

N/A

Recommendation:

N/A - Refer to Finding



Basement Level: B3 Women's Staff Restrooms and Lockers

Finding: 36

The water and drain pipes under the lavatory are not adequately insulated.

Water supply and drain pipes under lavatories and sinks shall be insulated or otherwise configured to protect against contact. There shall be no sharp or abrasive surfaces under lavatories and sinks.

2010 ADAS Section 606.5

Water supply and drain pipes under lavatories and sinks shall be insulated or otherwise configured to protect against contact. There shall be no sharp or abrasive surfaces under lavatories and sinks.

Citation:

2010 ADAS Section: 606.5

As Built:

Not insulated

Recommendation:

N/A - Refer to Finding



Basement Level: B3 Women's Staff Restrooms and Lockers

Finding: 37

The bench is not the required depth.

Benches shall have seats that are 42 inches long minimum and 20 inches deep minimum and 24 inches deep maximum.

2010 ADAS Section 903.3

Benches shall have seats that are 42 inches (1065 mm) long minimum and 20 inches (510 mm) deep minimum and 24 inches (610 mm) deep maximum.

Citation:

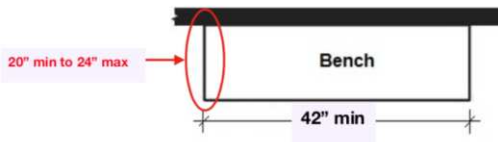
2010 ADAS Section: 903.3

As Built:

12 x 61

Recommendation:

N/A - Refer to Finding



Basement Level: B3 Women's Staff Restrooms and Lockers

Finding: 38

Accessible lockers are not provided.

5% but not less than one of each type of locker must be accessible. Lockers of different size are considered different types.

Although not specifically required, it is considered "best practices" that accessible elements be identified to prevent confusion for those needing accessible elements and to indicate to those that do not need accessible elements that they should only be used if others are unavailable.

2010 ADAS Section 225.2.1

Where lockers are provided, at least 5 percent, but no fewer than one of each type, shall comply with 811.

Citation:

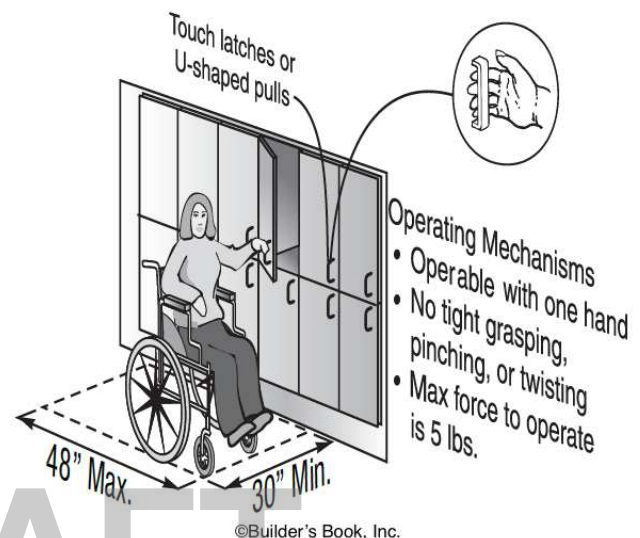
2010 ADAS Section: 225.2.1

As Built:

None

Recommendation:

N/A - Refer to Finding



Basement Level: B3 Women's Staff Restrooms and Lockers

Finding: 39

The transfer shower compartment is not the minimum required size.

Transfer type shower compartments shall be 36 inches by 36 inches clear inside dimensions measured at the center points of opposing sides and shall have a 36 inch wide minimum entry on the face of the shower compartment.

2010 ADAS Section 608.2.1

Transfer type shower compartments shall be 36 inches (915 mm) by 36 inches (915 mm) clear inside dimensions measured at the center points of opposing sides and shall have a 36 inch (915 mm) wide minimum entry on the face of the shower compartment. Clearance of 36 inches (915 mm) wide minimum by 48 inches (1220 mm) long minimum measured from the control wall shall be provided.

Citation:

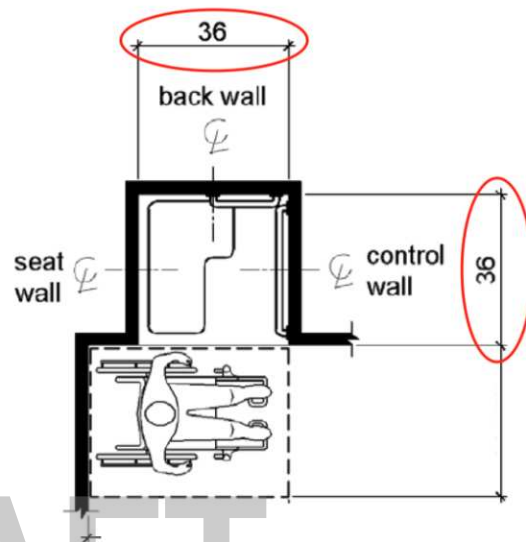
2010 ADAS Section: 608.2.1

As Built:

36 w x 34 d

Recommendation:

N/A - Refer to Finding



Note: Inside finished dimensions measured at the center points of opposing sides.

Basement Level: B3 Women's Staff Restrooms and Lockers

Finding: 40

The compartment stall is not nearly compliant.

The stall does not have the required minimum clear floor space or maneuvering clearances for the toilet, Grab bars are missing and/or incorrectly installed, accessories, such as toilet seat covers, toilet paper holders, and garbage cans are either too high, without clear floor space or both, the floor level changes greater than a 1/2 inch at the floor drains.

2010 ADAS Section 603.1

Toilet and bathing rooms shall comply with 603.

Citation:

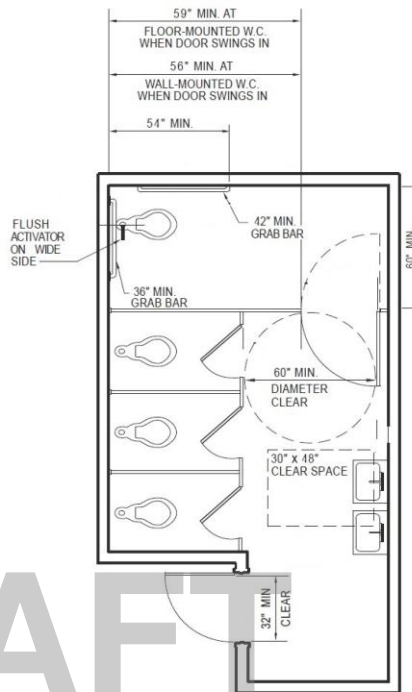
2010 ADAS Section: 603.1

As Built:

41w x 71 long

Recommendation:

N/A - Refer to Finding



1ST Level: F1 Main Entrance Vestibule

Finding: 41

Directions: Notes added to the As-Built field will carry over once the finding is updated.

Text / Notes added in the Finding Text, Item or Recommendation fields will be replaced when the drop-down menu selections are updated.

2010 ADAS Section Advisory

None

Citation:

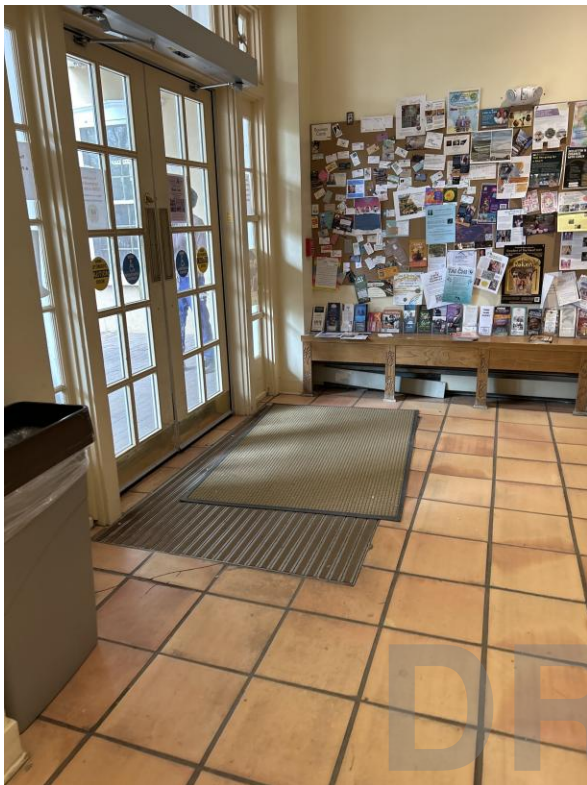
2010 ADAS Section: Advisory

As Built:

N/A

Recommendation:

N/A - Refer to Finding



1ST Level: F2 Main Lobby

Finding: 42

Directions: Notes added to the As-Built field will carry over once the finding is updated.

Text / Notes added in the Finding Text, Item or Recommendation fields will be replaced when the drop-down menu selections are updated.

2010 ADAS Section Advisory

None

Citation:

2010 ADAS Section: Advisory

As Built:

N/A

Recommendation:

N/A - Refer to Finding



1ST Level: F3 Entry from Parking Lot

Finding: 43

Directions: Notes added to the As-Built field will carry over once the finding is updated.

Text / Notes added in the Finding Text, Item or Recommendation fields will be replaced when the drop-down menu selections are updated.

2010 ADAS Section Advisory
None

Citation:

2010 ADAS Section: Advisory

As Built:

N/A

Recommendation:

N/A - Refer to Finding



1ST Level: F4 Computer Area

Finding: 44

Directions: Notes added to the As-Built field will carry over once the finding is updated.

Text / Notes added in the Finding Text, Item or Recommendation fields will be replaced when the drop-down menu selections are updated.

2010 ADAS Section Advisory
None

Citation:

2010 ADAS Section: Advisory

As Built:

N/A

Recommendation:

N/A - Refer to Finding



1ST Level: F5 Microfilm and Study Area

Finding: 45

Directions: Notes added to the As-Built field will carry over once the finding is updated.

Text / Notes added in the Finding Text, Item or Recommendation fields will be replaced when the drop-down menu selections are updated.

2010 ADAS Section Advisory
None

Citation:

2010 ADAS Section: Advisory

As Built:

N/A

Recommendation:

N/A - Refer to Finding



1ST Level: F6 Ramp to Reading Room

Finding: 46

Directions: Notes added to the As-Built field will carry over once the finding is updated.

Text / Notes added in the Finding Text, Item or Recommendation fields will be replaced when the drop-down menu selections are updated.

2010 ADAS Section Advisory

None

Citation:

2010 ADAS Section: Advisory

As Built:

N/A

Recommendation:

N/A - Refer to Finding



1ST Level: F7 Copy Station Adjacent to Ramp

Finding: 47

Directions: Notes added to the As-Built field will carry over once the finding is updated.

Text / Notes added in the Finding Text, Item or Recommendation fields will be replaced when the drop-down menu selections are updated.

2010 ADAS Section Advisory

None

Citation:

2010 ADAS Section: Advisory

As Built:

N/A

Recommendation:

N/A - Refer to Finding



1ST Level: F8 Drinking Fountain and Stairs to Lower Nonfiction Area

Finding: 48

Directions: Notes added to the As-Built field will carry over once the finding is updated.

Text / Notes added in the Finding Text, Item or Recommendation fields will be replaced when the drop-down menu selections are updated.

2010 ADAS Section Advisory
None

Citation:

2010 ADAS Section: Advisory

As Built:

N/A

Recommendation:

N/A - Refer to Finding



1ST Level: F9 Lower Nonfiction Area and Reading Room

Finding: 49

Directions: Notes added to the As-Built field will carry over once the finding is updated.

Text / Notes added in the Finding Text, Item or Recommendation fields will be replaced when the drop-down menu selections are updated.

2010 ADAS Section Advisory
None

Citation:

2010 ADAS Section: Advisory

As Built:

N/A

Recommendation:

N/A - Refer to Finding



1ST Level: F10 Women's Accessible Restroom

Finding: 50

Directions: Notes added to the As-Built field will carry over once the finding is updated.

Text / Notes added in the Finding Text, Item or Recommendation fields will be replaced when the drop-down menu selections are updated.

2010 ADAS Section Advisory
None

Citation:

2010 ADAS Section: Advisory

As Built:

N/A

Recommendation:

N/A - Refer to Finding



1ST Level: F11 Men's Accessible Restroom

Finding: 51

Directions: Notes added to the As-Built field will carry over once the finding is updated.

Text / Notes added in the Finding Text, Item or Recommendation fields will be replaced when the drop-down menu selections are updated.

2010 ADAS Section Advisory
None

Citation:

2010 ADAS Section: Advisory

As Built:

N/A

Recommendation:

N/A - Refer to Finding



1ST Level: F12 ELEVATOR in Main Lobby

Finding: 52

Directions: Notes added to the As-Built field will carry over once the finding is updated.

Text / Notes added in the Finding Text, Item or Recommendation fields will be replaced when the drop-down menu selections are updated.

2010 ADAS Section Advisory
None

Citation:

2010 ADAS Section: Advisory

As Built:

N/A

Recommendation:

N/A - Refer to Finding



1ST Level: F13 Central Stairs

Finding: 53

Directions: Notes added to the As-Built field will carry over once the finding is updated.

Text / Notes added in the Finding Text, Item or Recommendation fields will be replaced when the drop-down menu selections are updated.

2010 ADAS Section Advisory
None

Citation:

2010 ADAS Section: Advisory

As Built:

N/A

Recommendation:

N/A - Refer to Finding



1ST Level: F14 Stairs to Administration Offices

Finding: 54

Directions: Notes added to the As-Built field will carry over once the finding is updated.

Text / Notes added in the Finding Text, Item or Recommendation fields will be replaced when the drop-down menu selections are updated.

2010 ADAS Section Advisory
None

Citation:

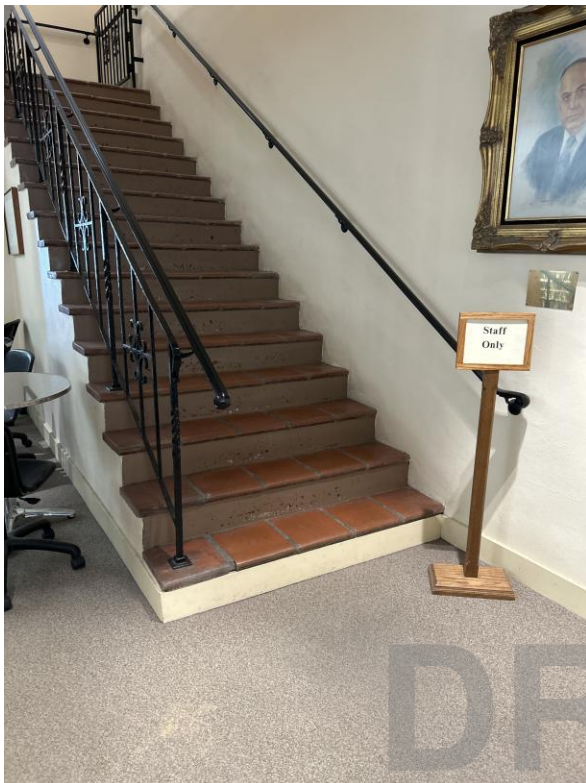
2010 ADAS Section: Advisory

As Built:

N/A

Recommendation:

N/A - Refer to Finding



1ST Level: F15 Fiction and New Books Section

Finding: 55

Directions: Notes added to the As-Built field will carry over once the finding is updated.

Text / Notes added in the Finding Text, Item or Recommendation fields will be replaced when the drop-down menu selections are updated.

2010 ADAS Section Advisory

None

Citation:

2010 ADAS Section: Advisory

As Built:

N/A

Recommendation:

N/A - Refer to Finding



1ST Level: F16 Southwest Reading Room

Finding: 56

Directions: Notes added to the As-Built field will carry over once the finding is updated.

Text / Notes added in the Finding Text, Item or Recommendation fields will be replaced when the drop-down menu selections are updated.

2010 ADAS Section Advisory
None

Citation:

2010 ADAS Section: Advisory

As Built:

N/A

Recommendation:

N/A - Refer to Finding



1ST Level: F17 Ramp to Book Shelves and Exit

Finding: 57

Directions: Notes added to the As-Built field will carry over once the finding is updated.

Text / Notes added in the Finding Text, Item or Recommendation fields will be replaced when the drop-down menu selections are updated.

2010 ADAS Section Advisory
None

Citation:

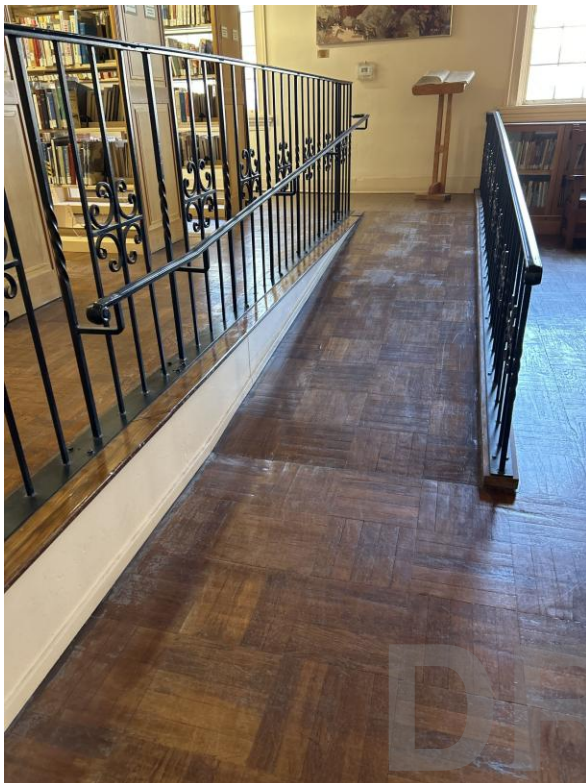
2010 ADAS Section: Advisory

As Built:

N/A

Recommendation:

N/A - Refer to Finding



1ST Level: F18 Stairs to Book Shelves and Exit

Finding: 58

Directions: Notes added to the As-Built field will carry over once the finding is updated.

Text / Notes added in the Finding Text, Item or Recommendation fields will be replaced when the drop-down menu selections are updated.

2010 ADAS Section Advisory
None

Citation:

2010 ADAS Section: Advisory

As Built:

N/A

Recommendation:

N/A - Refer to Finding



1ST Level: F18 Staff Area

Finding: 59

Directions: Notes added to the As-Built field will carry over once the finding is updated.

Text / Notes added in the Finding Text, Item or Recommendation fields will be replaced when the drop-down menu selections are updated.

2010 ADAS Section Advisory
None

Citation:

2010 ADAS Section: Advisory

As Built:

N/A

Recommendation:

N/A - Refer to Finding



2ND Level: S1 Upper Floor Gallery and Corridors

Finding: 60

Directions: Notes added to the As-Built field will carry over once the finding is updated.

Text / Notes added in the Finding Text, Item or Recommendation fields will be replaced when the drop-down menu selections are updated.

2010 ADAS Section Advisory
None

Citation:

2010 ADAS Section: Advisory

As Built:

N/A

Recommendation:

N/A - Refer to Finding



2ND Level: S2 Men's Restroom

Finding: 61

Directions: Notes added to the As-Built field will carry over once the finding is updated.

Text / Notes added in the Finding Text, Item or Recommendation fields will be replaced when the drop-down menu selections are updated.

2010 ADAS Section Advisory
None

Citation:

2010 ADAS Section: Advisory

As Built:

N/A

Recommendation:

N/A - Refer to Finding



2ND Level: S3 Women's Restroom

Finding: 62

Directions: Notes added to the As-Built field will carry over once the finding is updated.

Text / Notes added in the Finding Text, Item or Recommendation fields will be replaced when the drop-down menu selections are updated.

2010 ADAS Section Advisory
None

Citation:

2010 ADAS Section: Advisory

As Built:

N/A

Recommendation:

N/A - Refer to Finding



2ND Level: S4 Tatum Community Room

Finding: 63

Directions: Notes added to the As-Built field will carry over once the finding is updated.

Text / Notes added in the Finding Text, Item or Recommendation fields will be replaced when the drop-down menu selections are updated.

2010 ADAS Section Advisory
None

Citation:

2010 ADAS Section: Advisory

As Built:

N/A

Recommendation:

N/A - Refer to Finding



2ND Level: S5 Southeast Exit Stairs

Finding: 64

Directions: Notes added to the As-Built field will carry over once the finding is updated.

Text / Notes added in the Finding Text, Item or Recommendation fields will be replaced when the drop-down menu selections are updated.

2010 ADAS Section Advisory
None

Citation:

2010 ADAS Section: Advisory

As Built:

N/A

Recommendation:

N/A - Refer to Finding



2ND Level: S6 Pick Conference Room

Finding: 65

Directions: Notes added to the As-Built field will carry over once the finding is updated.

Text / Notes added in the Finding Text, Item or Recommendation fields will be replaced when the drop-down menu selections are updated.

2010 ADAS Section Advisory
None

Citation:

2010 ADAS Section: Advisory

As Built:

N/A

Recommendation:

N/A - Refer to Finding



2ND Level: S7 Media Services

Finding: 66

Directions: Notes added to the As-Built field will carry over once the finding is updated.

Text / Notes added in the Finding Text, Item or Recommendation fields will be replaced when the drop-down menu selections are updated.

2010 ADAS Section Advisory
None

Citation:

2010 ADAS Section: Advisory

As Built:

N/A

Recommendation:

N/A - Refer to Finding



2ND Level: S8 Children's Room

Finding: 67

Directions: Notes added to the As-Built field will carry over once the finding is updated.

Text / Notes added in the Finding Text, Item or Recommendation fields will be replaced when the drop-down menu selections are updated.

2010 ADAS Section Advisory
None

Citation:

2010 ADAS Section: Advisory

As Built:
N/A

Recommendation:
N/A - Refer to Finding



2ND Level: S9 Children' Restroom and Corridor

Finding: 68

Directions: Notes added to the As-Built field will carry over once the finding is updated.

Text / Notes added in the Finding Text, Item or Recommendation fields will be replaced when the drop-down menu selections are updated.

2010 ADAS Section Advisory
None

Citation:

2010 ADAS Section: Advisory

As Built:

N/A

Recommendation:

N/A - Refer to Finding



2ND Level: S10 ELEVATOR and Staff Lobby

Finding: 69

Directions: Notes added to the As-Built field will carry over once the finding is updated.

Text / Notes added in the Finding Text, Item or Recommendation fields will be replaced when the drop-down menu selections are updated.

2010 ADAS Section Advisory
None

Citation:

2010 ADAS Section: Advisory

As Built:

N/A

Recommendation:

N/A - Refer to Finding



2ND Level: S11 Southeast Exit Stairs

Finding: 70

Directions: Notes added to the As-Built field will carry over once the finding is updated.

Text / Notes added in the Finding Text, Item or Recommendation fields will be replaced when the drop-down menu selections are updated.

2010 ADAS Section Advisory
None

Citation:

2010 ADAS Section: Advisory

As Built:

N/A

Recommendation:

N/A - Refer to Finding



2ND Level: S12 Administration Office Corridors (Staff Only)

Finding: 71

Directions: Notes added to the As-Built field will carry over once the finding is updated.

Text / Notes added in the Finding Text, Item or Recommendation fields will be replaced when the drop-down menu selections are updated.

2010 ADAS Section Advisory
None

Citation:

2010 ADAS Section: Advisory

As Built:

N/A

Recommendation:

N/A - Refer to Finding



2ND Level: S13 Staff Lounge

Finding: 72

Directions: Notes added to the As-Built field will carry over once the finding is updated.

Text / Notes added in the Finding Text, Item or Recommendation fields will be replaced when the drop-down menu selections are updated.

2010 ADAS Section Advisory
None

Citation:

2010 ADAS Section: Advisory

As Built:

N/A

Recommendation:

N/A - Refer to Finding



2ND Level: S14 Staff Restroom on Right Side

Finding: 73

Directions: Notes added to the As-Built field will carry over once the finding is updated.

Text / Notes added in the Finding Text, Item or Recommendation fields will be replaced when the drop-down menu selections are updated.

2010 ADAS Section Advisory
None

Citation:

2010 ADAS Section: Advisory

As Built:

N/A

Recommendation:

N/A - Refer to Finding



2ND Level: S15 Staff Restroom on Left Side

Finding: 74

Directions: Notes added to the As-Built field will carry over once the finding is updated.

Text / Notes added in the Finding Text, Item or Recommendation fields will be replaced when the drop-down menu selections are updated.

2010 ADAS Section Advisory
None

Citation:

2010 ADAS Section: Advisory

As Built:

N/A

Recommendation:

N/A - Refer to Finding



Findings with no area description

Finding: 75

The truncated domes do not have the correct spacing.

Truncated domes in a detectable warning surface shall have a center-to-center spacing of 1.6 inches minimum and 2.4 inches maximum, and a base-to-base spacing of 0.65 inch minimum, measured between the most adjacent domes on a square grid.

2010 ADAS Section 705.1.2

Truncated domes in a detectable warning surface shall have a center-to-center spacing of 1.6 inches (41 mm) minimum and 2.4 inches (61 mm) maximum, and a base-to-base spacing of 0.65 inch (17 mm) minimum, measured between the most adjacent domes on a square grid.

Citation:

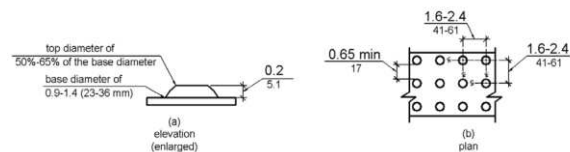
2010 ADAS Section: 705.1.2

As Built:

36 inch wide band of truncated domes not provided at passenger loading zone per 4.29.5

Recommendation:

N/A - Refer to Finding



DRAFT