

***Guadalupe Street Construction Briefing:
What's Ahead and What to Expect
May 13, 2025***

Guadalupe Street Reconstruction Project

An Update

Romella Glorioso-Moss, PhD, CPM
City Capital Projects Manager

Kody Keelin
City Project Manager

Mark Brooks
GM Emulsion Project Superintendent

Wilson & Company, Inc. Engineers & Architects

THE PROJECT

Guadalupe Street – from Agua Fria to Paseo de Peralta



2015

RSA COMPLETED

2017

*ENG. DESIGN STARTED &
1st PUBLIC MEETING HELD*

PROJECT TIMELINE

\$11 M

**100% HSIP funded
Design & Construction**

2022

*PROJECT
PRODUCTION
PACKAGE*

2023

*PROJECT
BID*

2024

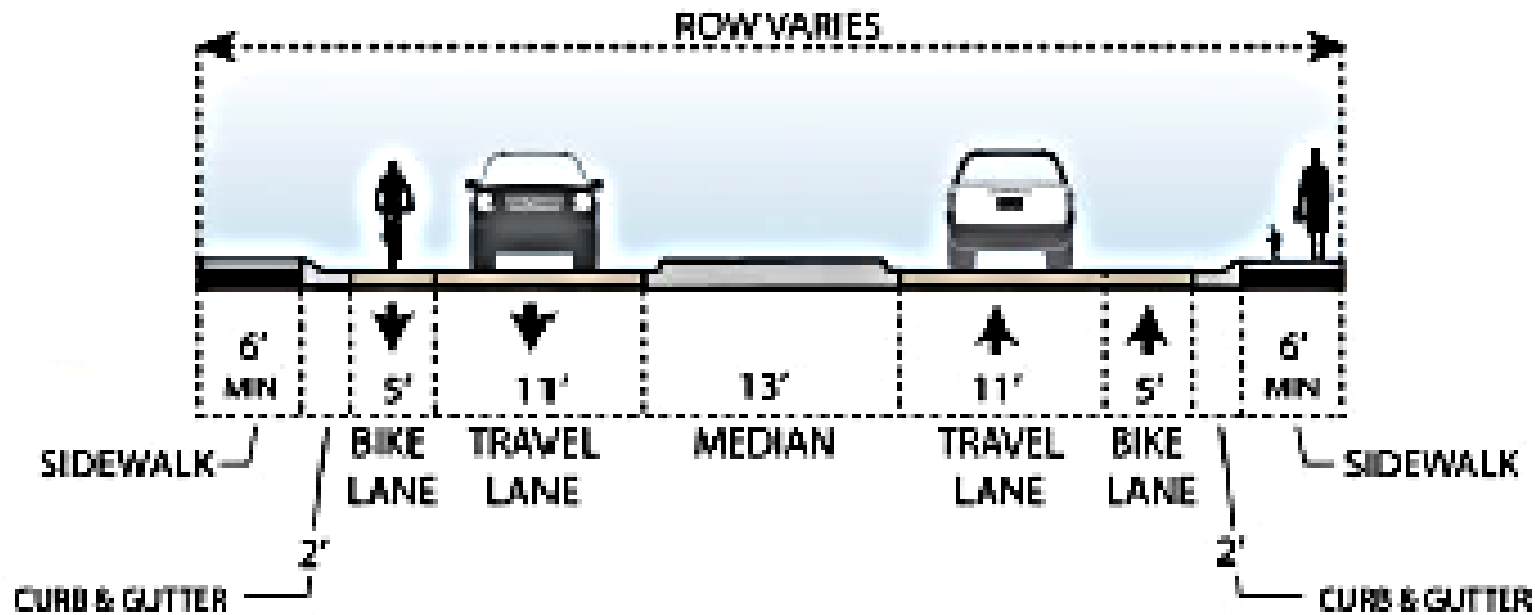
*CONSTRUCTION
STARTED*

2025

SUMMER

*CONSTRUCTION
COMPLETION³*

PROJECT SCOPE OF WORK



6' ADA compliant
sidewalks on both
sides of the street

5'-wide bike lanes
on both sides of
the street

2 11'-wide travel
lanes

continues raised &
landscaped
medians with
occasional breaks
to permit left turns

fully
reconstructed
pavement

18 drive pads
reconstructed

PROJECT SCOPE OF WORK

DE VARGAS ST / AGUA FRIA ST



Extend Median

ALAMEDA ST



Eliminate EB Right-Turn Lane

WATER ST



Close Median

SAN FRANCISCO ST



Pedestrian Phase



JOHNSON ST



Left-Turn Bay

MCKENZIE ST / JEFFERSON ST



Extend Median

PARK AVE / CATRON ST



Add Median & Left-Turn Bay

JOSE ST



Full Access

SOLONA ST



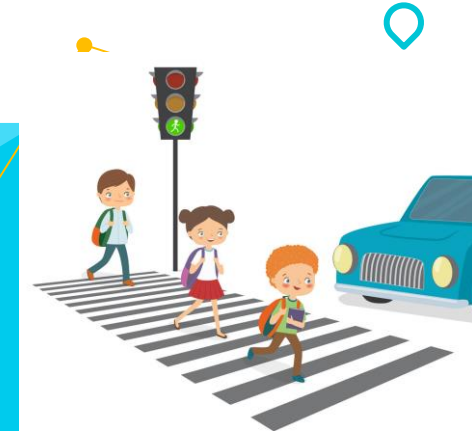
Right-In/Right-Out/Left-Out

PASEO DE PERALTA



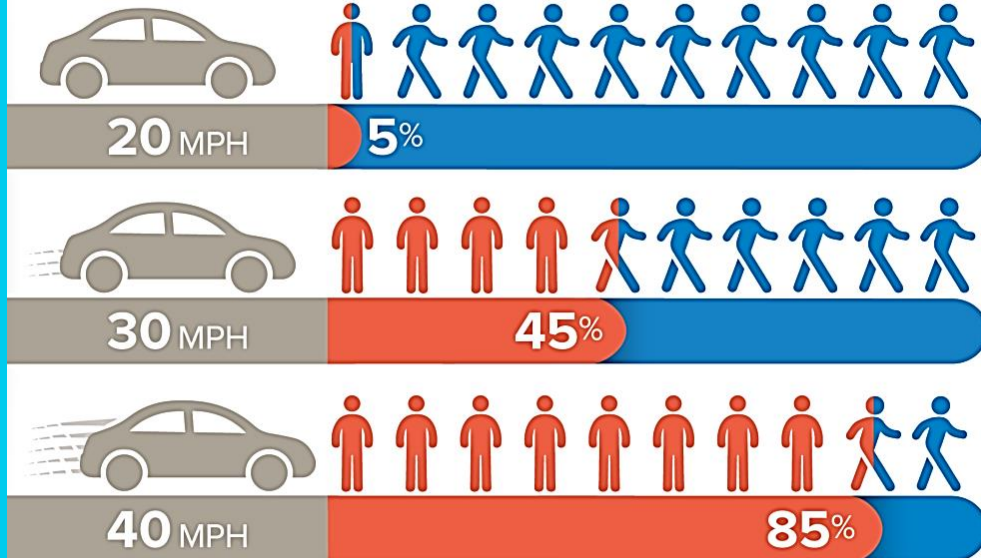
Double Southbound Left

PROJECT BENEFITS



If hit by a car traveling:

● Fatality ● Person survives collision



National Traffic Safety Board (2017) Reducing Speeding-Related Crashes Involving Passenger Vehicles.
Available from: <https://www.nts.gov/safety/safety-studies/Documents/SS1701.pdf>

- Safe and equitable access to all road users (motorists, cyclists, & pedestrians)
- Improved access to all businesses and residences
- Improved street lighting, intersections, traffic signals including new flashing beacon @ Carlos Gilbert Elementary School
- Improved aesthetics

Failing Infrastructure



3 ft-deep sinkhole



Sidewalks on the West side have no foundation creating sinkholes posing hazards to pedestrians.

Corrective Actions



New storm water drainpipe



New concrete foundation



New sidewalk

Failing Infrastructure Needing Replacement

Failing Pavement.



Corroded storm water drainage infrastructure creating sinkholes.

Corrective Actions



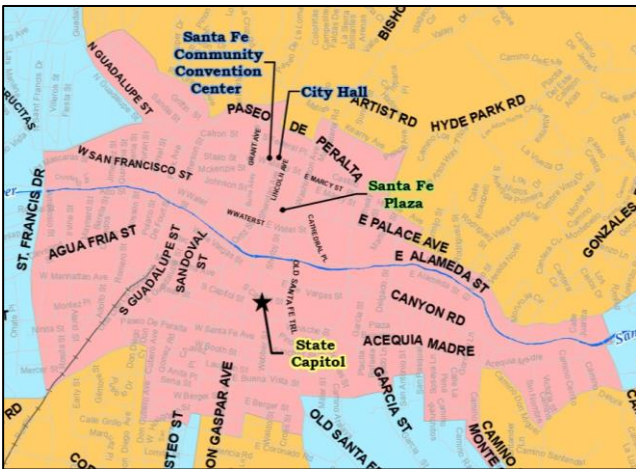
Install new storm drain water pipes.

Failing Infrastructure Needing Replacement

Kept running into existing utilities that needed to be relocated, replaced or repaired, such as leaking gas main and water valves.



Construction Challenges



Construction challenge is that since this project is within the Guadalupe Historic District, we cannot do what we needed to do without permission from SHPO.

Funding requirement restrictions:
Need to comply with NMDOT/FHWA



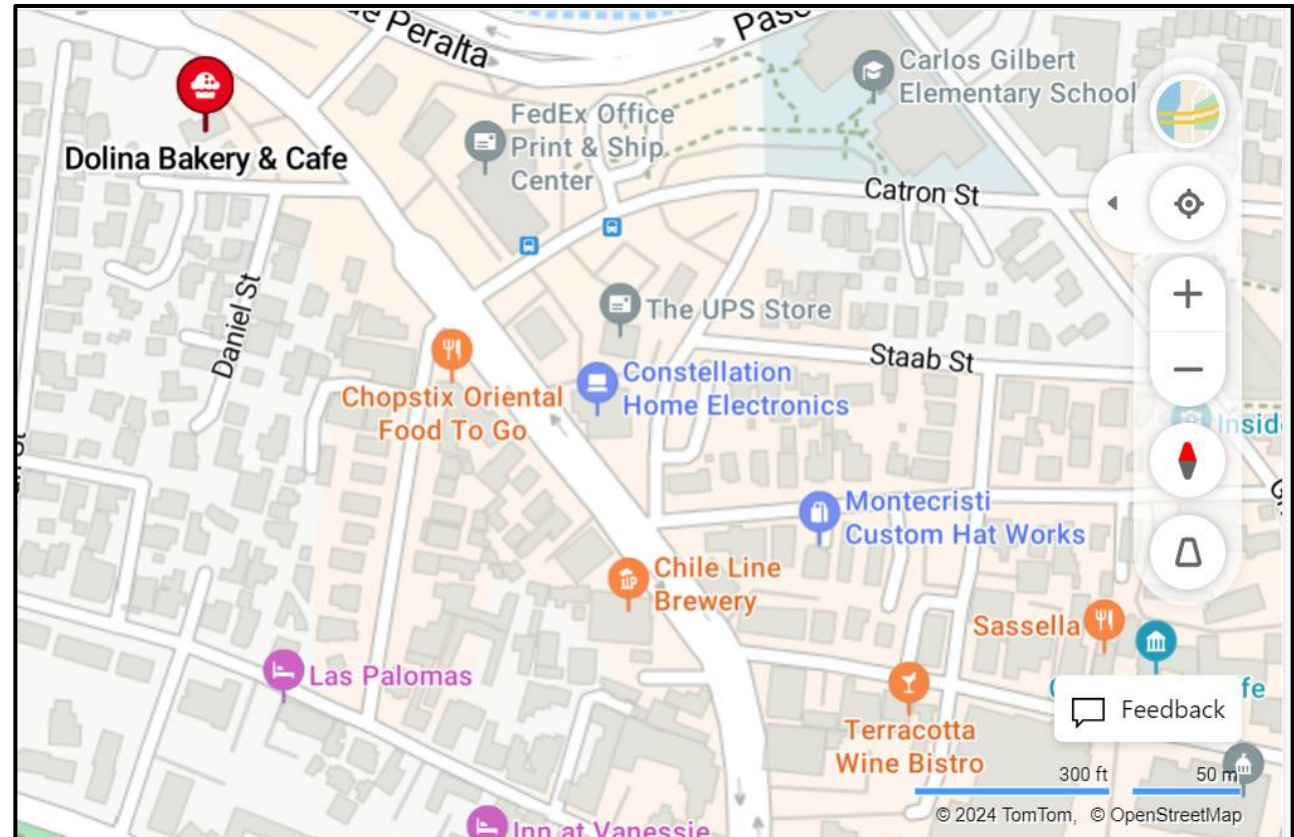
Construction Challenges



Road users navigating traffic controls through construction site.

Construction Challenges

Limited access to businesses and residences.



Next Construction Activities



Concrete form placement for curb and gutter center median ST.16+25.



Replacing the medians

Next Construction Activities

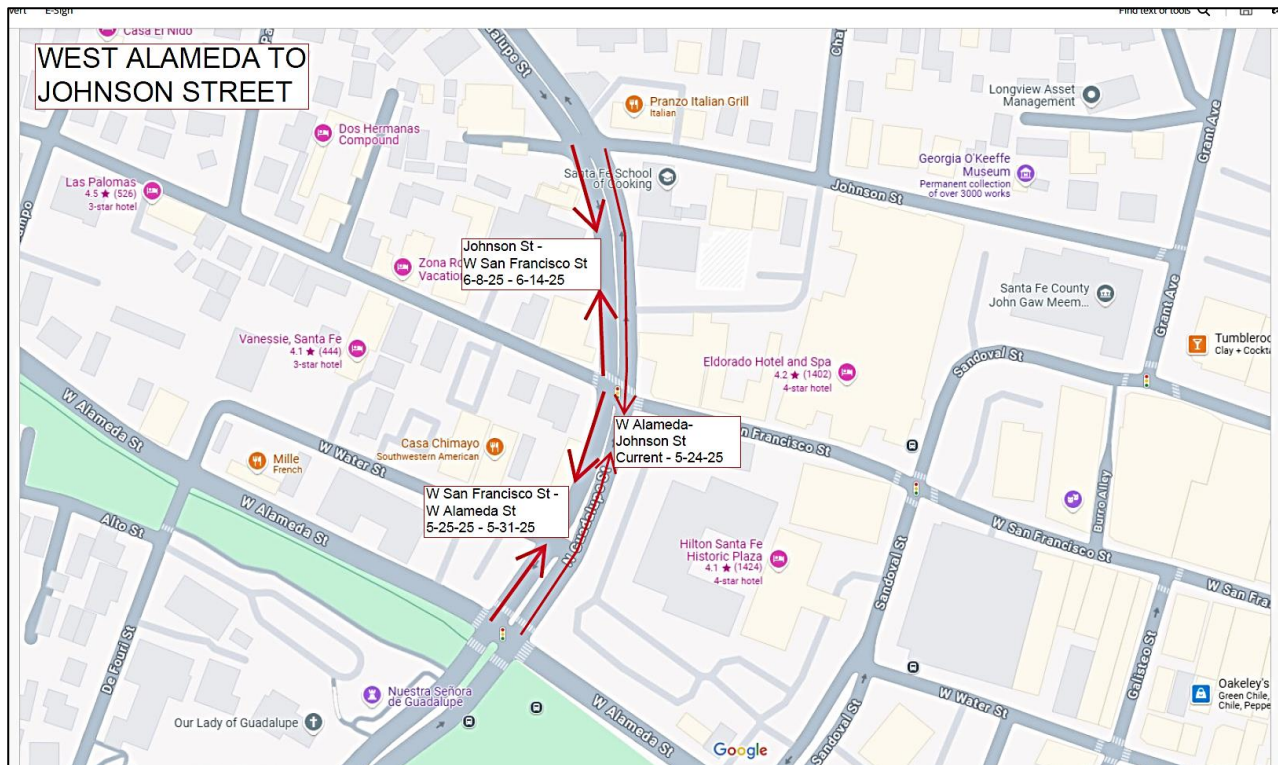


Asphalt removal NB Gudalupe St. @ W. San Francisco St.



Pavement Reconstruction

Construction Project Schedule & Closures



West Alameda to Johnson St
Present to 5/24

West San Francisco to West Alameda
5/25 to 5/31

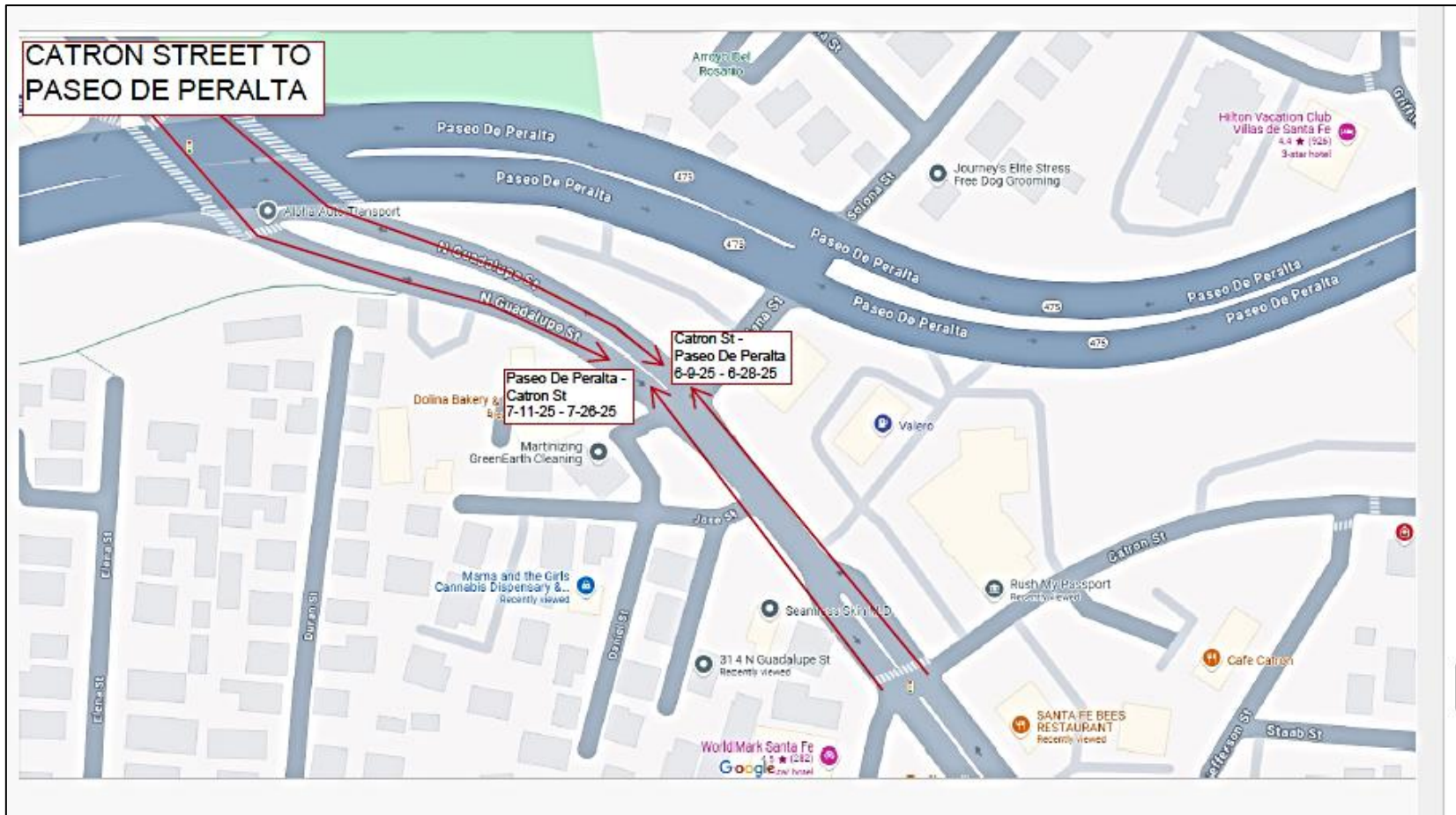
Johnson St to West San Francisco
6/8 to 6/14

Construction Project Schedule & Closures



Johnson St to Catron St
5/25 to 5/31
6/28 to 7/11

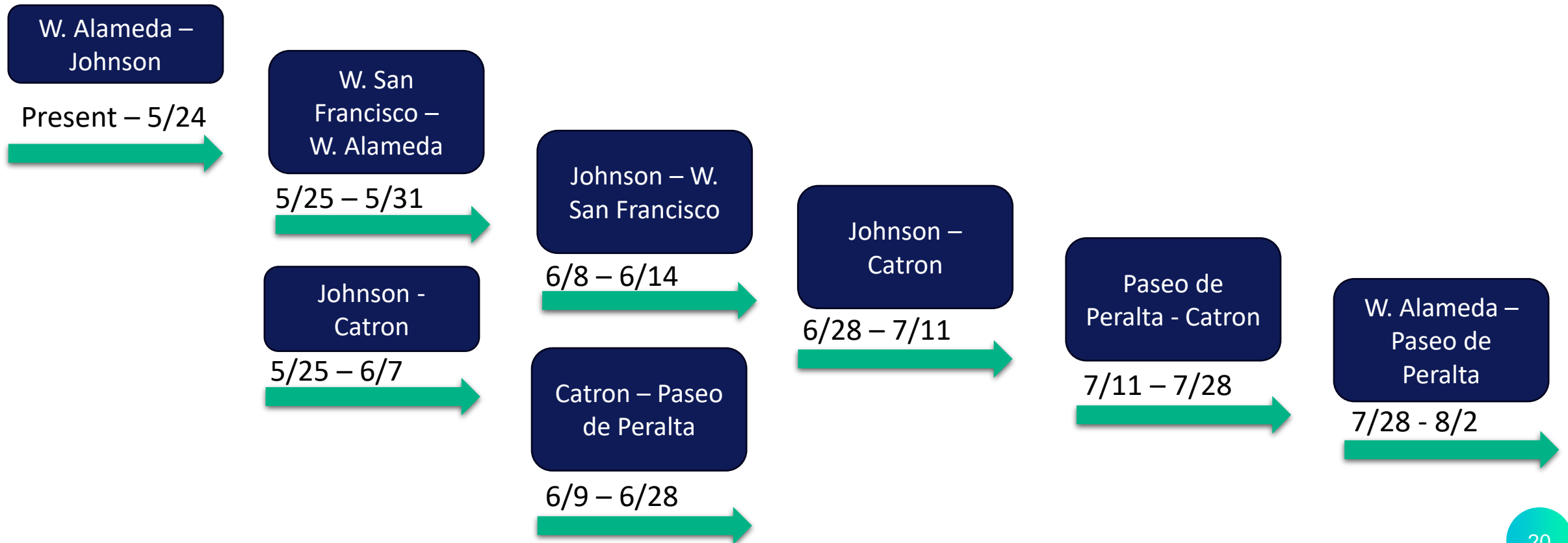
Construction Project Schedule & Closures



Catron St – Paseo de Peralta
6-9 to 6-28

Paseo de Peralta to Catron St
7-11 to 7-25

Construction Project Schedule & Closures





THANK YOU

Any questions?

rsglorioso-moss@santafenm.gov

kwkeelin@santafenm.gov

mark@gmemulsion.com