



Providing a safe, reliable, and resilient water supply to meet Santa Fe's needs.

CoSF Water Supply & Demand Update: October 2022

This report is available at <https://www.santafenm.gov/water>

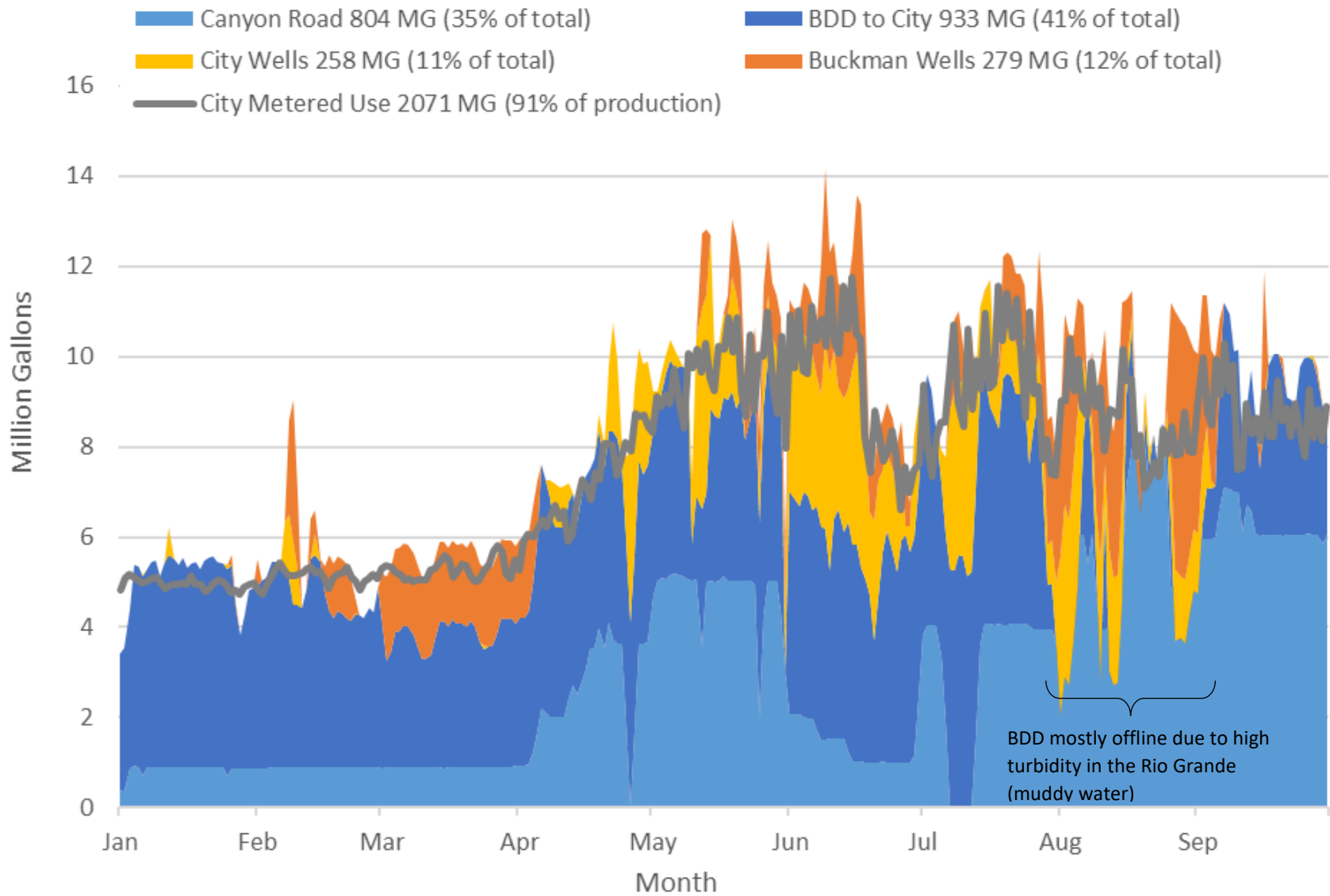
1. Supply and Demand Summary

- City of Santa Fe Water produced 2.27 billion gallons of potable water in the first nine months of 2022, a 1% increase from the same period in 2021.
- 76% of that production came from surface water sources (rivers).
- 91% of potable water produced in 2022 has been delivered to customers (9% “unaccounted” water loss).
- BDD offline for most of August due to high turbidity in the Rio Grande.
- Our storage tanks allow us to produce less water than is delivered to customers on some days.
- Potable production and use by day through the year are shown on Page 2.



Providing a safe, reliable, and resilient water supply to meet Santa Fe's needs.

2022 City of Santa Fe Water Production and Use





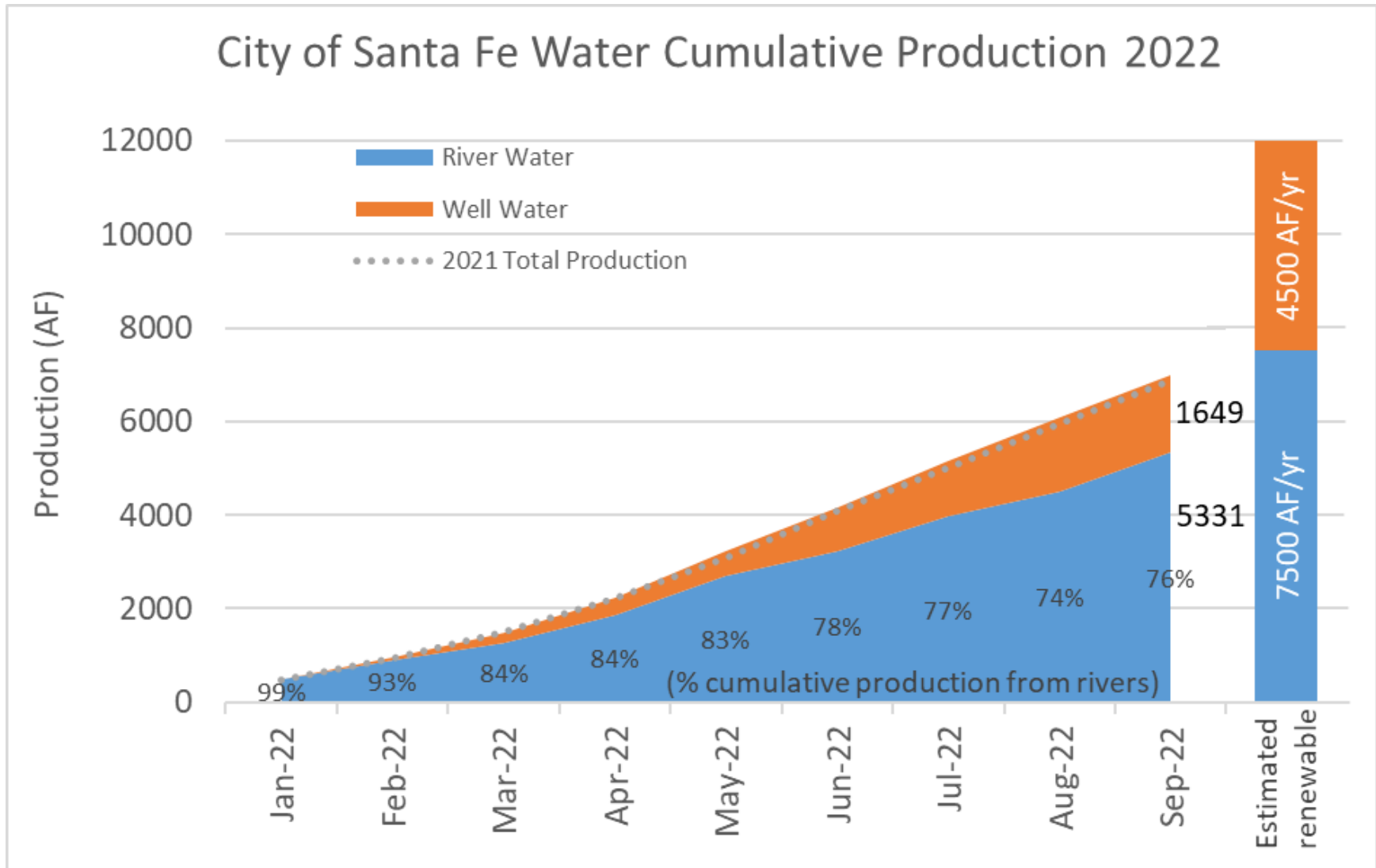
Providing a safe, reliable, and resilient water supply to meet Santa Fe's needs.

2. Cumulative Annual Surface Water and Groundwater Production

- Through September of 2022, City of Santa Fe Water has produced 6980 AF of potable water, 1% more than through September of last year.
- 76% (5331 AF) of this production came from river water, and 24% (1649 AF) from wells.
- We estimate renewable groundwater availability from all wells of ~4500 AF per year, almost 3 times more than the 1649 AF used so far. As a result, we expect average groundwater levels to rise again this year.
- 2022 cumulative groundwater use through September was almost double use through September in 2020, but 8% less than last year.
- Cumulative annual production from rivers and wells is shown on Page 4.



Providing a safe, reliable, and resilient water supply to meet Santa Fe's needs.





Providing a safe, reliable, and resilient water supply to meet Santa Fe's needs.

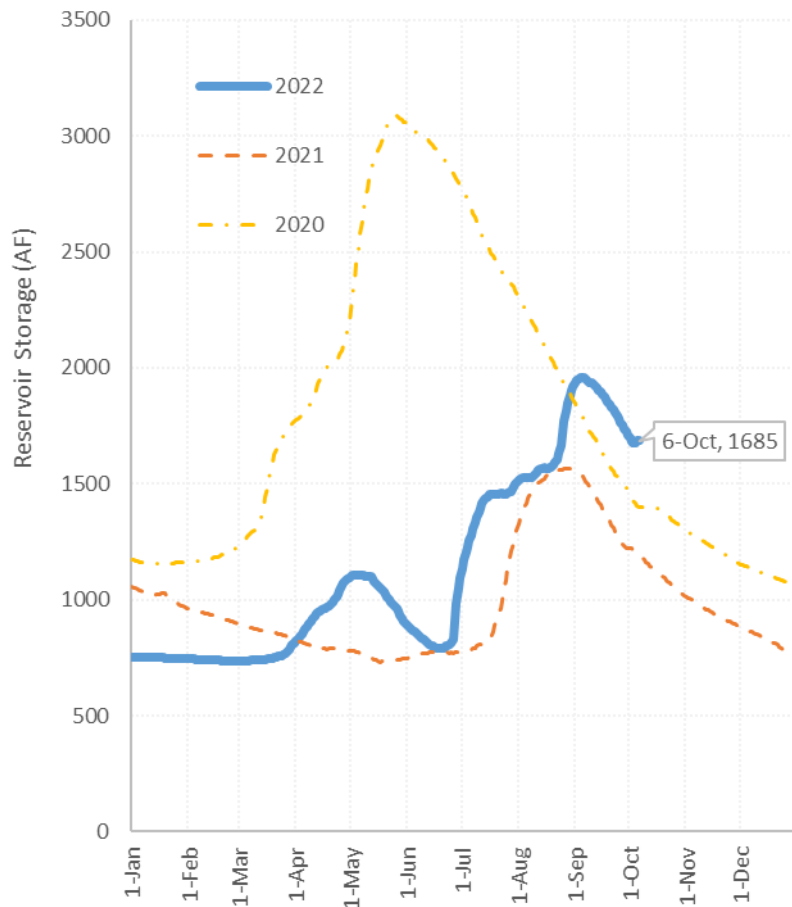
3. City of Santa Fe Water Reservoir Storage

- Santa Fe River Reservoirs had 1685 AF (about two months of City demand) of water in storage on October 6th (43% capacity).
- Consistent summer rains in the upper watershed have resulted in Santa Fe River Reservoir storage since the beginning of September larger than in either of the past two years.
- City of Santa Fe Water had 13,464 AF of San Juan Chama water in storage on October 19th (~1.5x total annual City demand).
- Reservoir storage in 2022 compared to 2020 and 2021 is shown on Page 6.

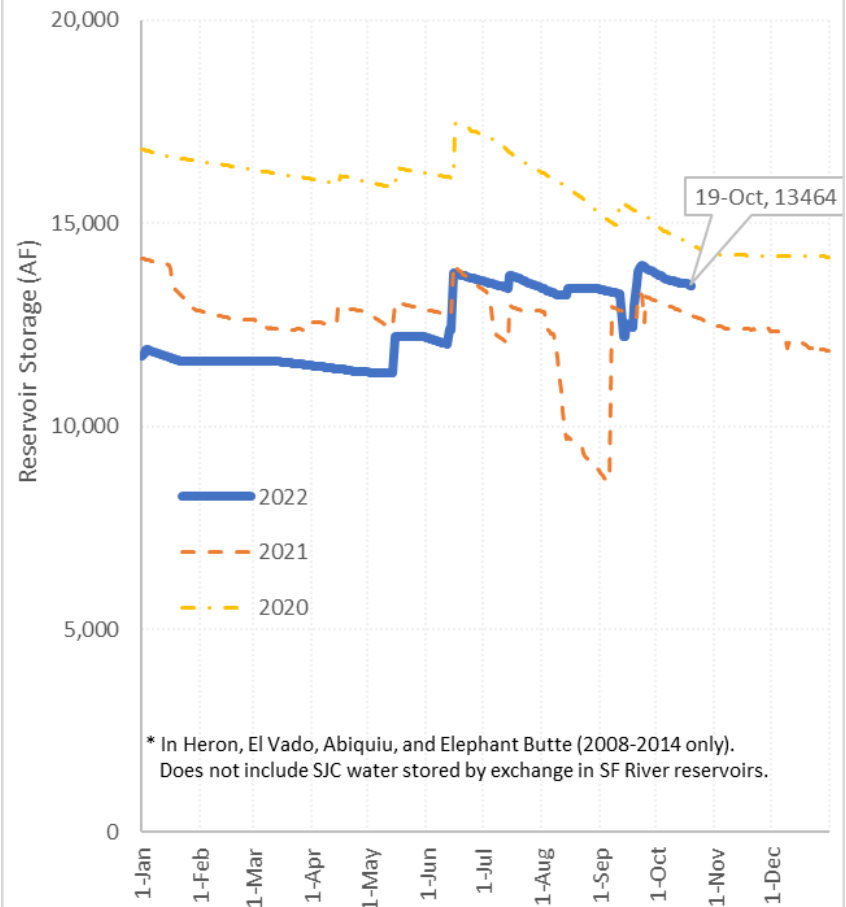


Providing a safe, reliable, and resilient water supply to meet Santa Fe's needs.

Total Santa Fe River Reservoir Storage



Total San Juan Chama Project Storage



* In Heron, El Vado, Abiquiu, and Elephant Butte (2008-2014 only).
Does not include SJC water stored by exchange in SF River reservoirs.



Providing a safe, reliable, and resilient water supply to meet Santa Fe's needs.

4. Miscellaneous

- San Juan Chama Return Flow Project Status Update
 - Engineering Design: Request for approval of \$3.8M contract with Carollo Engineers started through committee on October 24th. Targeting 100% design done by June 2024.
 - Permitting:
 - NEPA: Scoping Report, technical analysis of lower Santa Fe River hydrology and impacts assessment, and draft environmental assessment all expected out in first half of 2023.
 - OSE: Return Flow Credit Application received two protests.
 - Lower Santa Fe River Planning Process:
 - County working on RFP for mediation services.

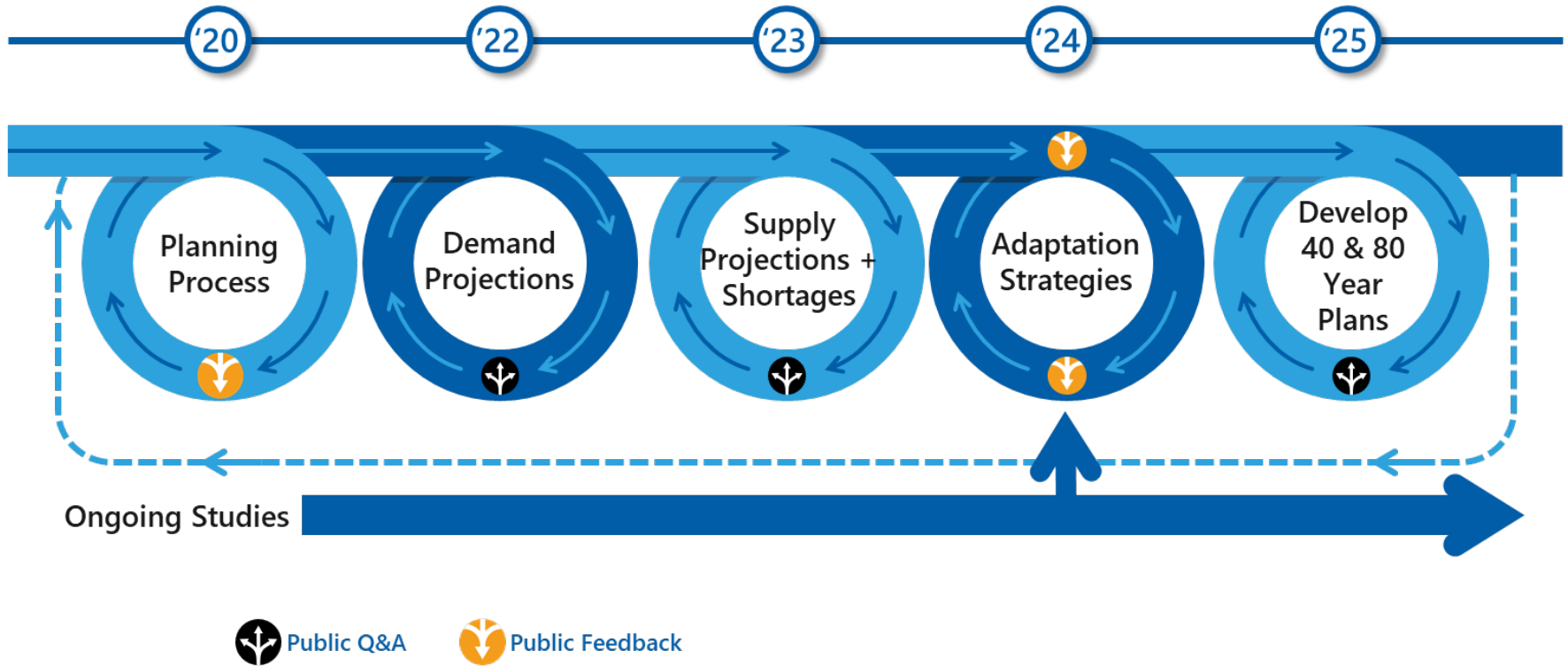
- Long Range Water Planning
 - City of SF Water has developed water use projections to 2100
 - County is working on doing the same



Providing a safe, reliable, and resilient water supply to meet Santa Fe's needs.



Santa Fe 2100 Planning Process



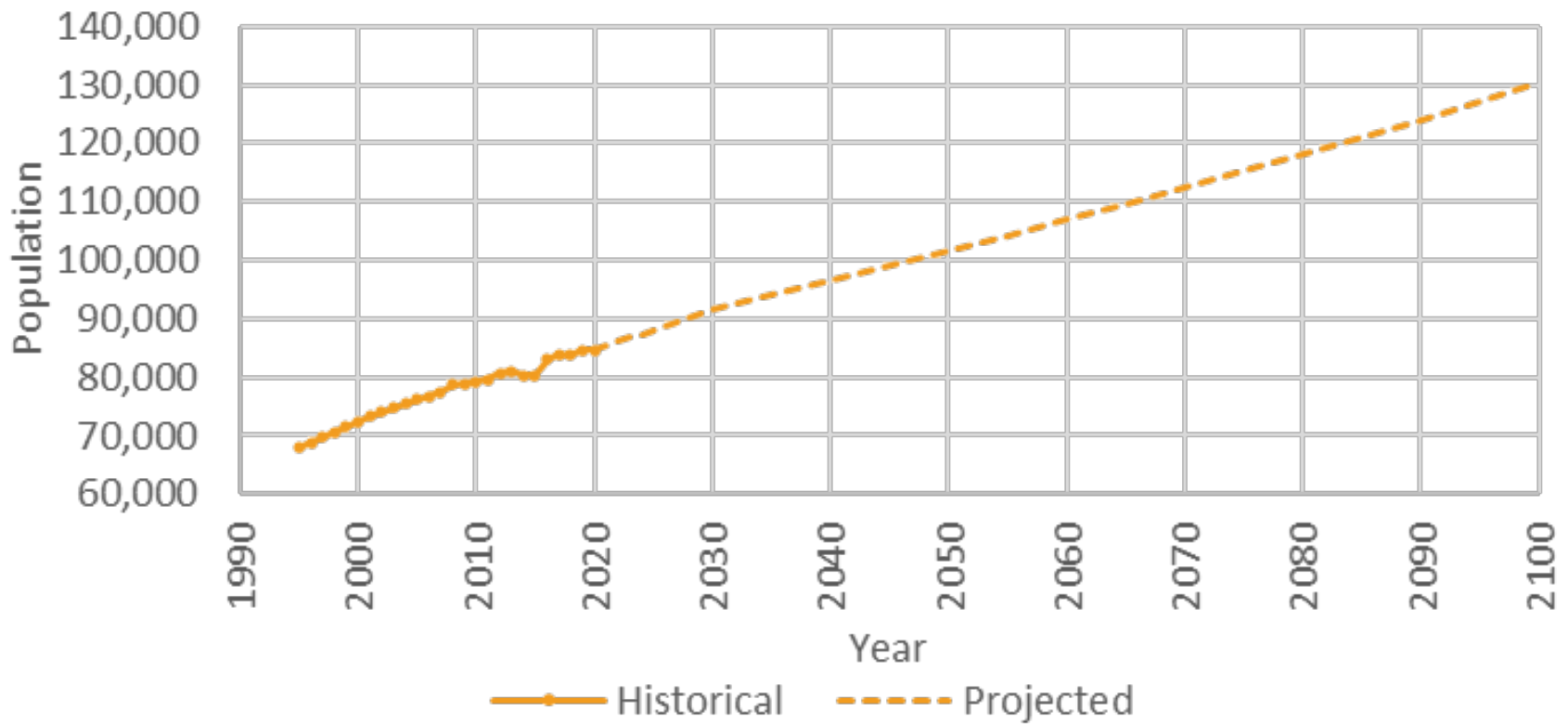
This year we are focused on demand projections



Providing a safe, reliable, and resilient water supply to meet Santa Fe's needs.



Projected City Population

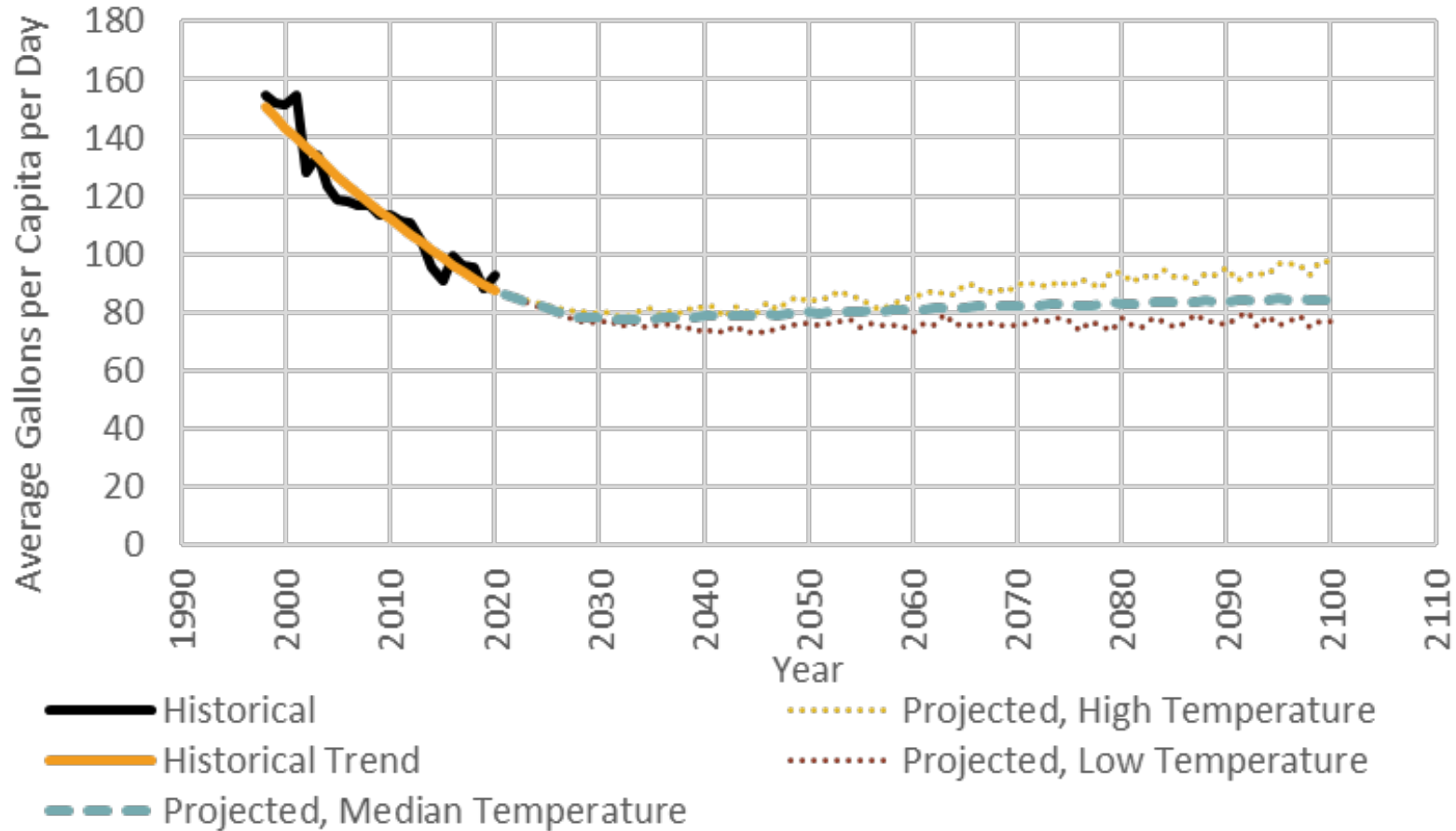




Providing a safe, reliable, and resilient water supply to meet Santa Fe's needs.



Projected Per-Capita Usage

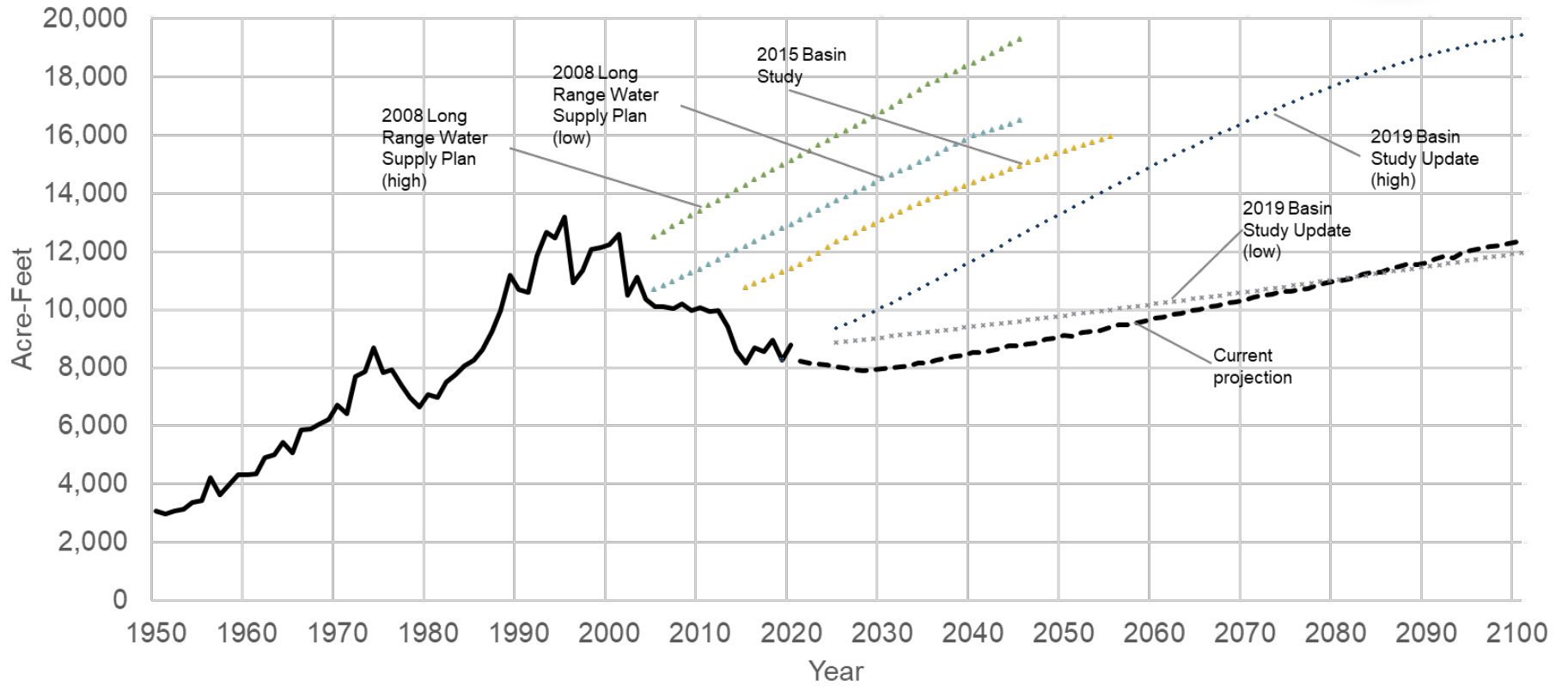




Providing a safe, reliable, and resilient water supply to meet Santa Fe's needs.



Projected Potable Demand





Providing a safe, reliable, and resilient water supply to meet Santa Fe's needs.

This information with more detail will be presented to the public in two webinars (same information both times) on November 15th.

SANTA FE WATER 2100
VIRTUAL INFORMATIONAL MEETING

NOVEMBER 15TH
9:00 AM - 10:30 AM
&
7:00 PM - 8:30PM

The graphic features a large blue water drop on the left containing the text 'SANTA FE WATER 2100'. To the right, the event title and dates are displayed in blue text on a light blue background.

Webinar info:

Tuesday 11/15 9am – 10:30am: <https://santafenm-gov.zoom.us/j/85030149392?pwd=WTd2WnY3UWFaU1NJQ3hNTTcwWGZlZz09>

Or join by phone: 1 (719) 359 4580 Meeting ID: 850 3014 9392 Passcode: 222001

Tuesday 11/15 7pm – 8:30pm: <https://santafenm-gov.zoom.us/j/87013255366?pwd=cHNxVjljcU5lT3RLbWVhWEt0c0grZz09>

Or join by phone: 1 (719) 359 4580 Meeting ID: 870 1325 5366 Passcode: 324877