



Agenda

DATE 10/23/14 TIME 3:00pm
BY Chris Sanchez
[Signature]

CHILDREN AND YOUTH COMMISSION MEETING

Tuesday, October 28, 2014

Market Station

Conference Room

500 Market Station

6:00 p.m. - 8:00 p.m.

1. Call to Order
2. Approval of Agenda
3. Approval of Minutes: September 29, 2014
4. New Business:
 - a. Muchas Gracias Awards: Sue Anne Herrmann, Ernestine Gallegos de Hagman and Michael Multari
 - b. Buckman Direct Diversion Project Presentation
 - c. SFPS Teen Parent Center Presentation
 - d. Approval of Santa Fe Teen Arts Center/W21 Scope of Services and Budget
 - e. Introduction of candidates interesting in becoming a Commissioner for the Children and Youth Commission
5. Old Business:
 - a. Data Project RFQ Discussion
6. Comments from the Chair and Commissioners
7. Report from Staff:
 - a. Update of Mayor Gonzales' Anti-Bully Campaign.
 - b. Update of Mayor's Children, Youth and Family Community Cabinet Meeting
8. Matters from the Floor
9. Adjournment

Persons with disabilities in need of accommodations, contact the City Clerk's office at 955-6520, five (5) working days prior to meeting date.

**CHILDREN AND YOUTH COMMISSION
INDEX
OCTOBER 28, 2014**

Cover Page		Page 1
Call to Order and Roll Call	The Children and Youth Commission meeting was convened by the Chair at 6:00 pm, City Railyard Offices, Santa Fe, New Mexico. A quorum was not declared by roll call.	Page 2
Approval of Agenda	<i>No Action, lack of quorum.</i>	Page 2
Approval of Minutes September 29, 2014	<i>No Action, lack of quorum.</i>	Page 2
New Business <ul style="list-style-type: none"> a. Muchas Gracias Awards b. Buckman Direct Diversion Project Presentation (Informational) c. SFPS Teen Parent Center Presentation (Informational) d. Approval of Santa Fe Teen Arts Center/W21 Scope of Services and Budget – tabled to next month meeting. e. Introduction of candidates interested in becoming a Commissioner for the Children and Youth Commission 	<i>Muchas Gracias Awards Sue Anne Herrmann, Ernestine Gallegos de Hagman for their service on the Children and Youth Commission</i>	Page 3-5
Old Business <ul style="list-style-type: none"> a. Data Project RFQ Discussion 	<i>Tabled to next month meeting, lack of quorum.</i>	Page 5
Communications from Chair and Commissioners	<i>Informational</i>	Page 5
Report from Staff <ul style="list-style-type: none"> a. Update on Mayor Gonzales Anti-Bullying Campaign b. Update on Children, Youth and Family Community Cabinet Meeting 	<i>Informational</i>	Page 5-6
Matters from the Floor	<i>Informational</i>	Page 6
Adjournment and Signature page	There being no further business to come before the Children and Youth Commission, the meeting was adjourned at 7:25 pm	Page 6

CHILDREN AND YOUTH COMMISSION
OCTOBER 28, 2014
6:00 PM – 7:25 PM
MINUTES

1. **The Children and Youth Commission meeting was called to order by Joanne Lefrak, Chair at 6:00 pm. A quorum was not present by roll call.**

Roll Call

Present

Joanne Lefrak, Chair
Thomas Bustamante
Dolores Fidel

Not Present

Jill Reichman
Paige Aarniokoski
Catherine (Katie) Dry

Staff Present

Terrie Rodriguez, Director
Chris Sanchez, Staff Liaison

Others Present

Ernestine Gallegos de Hagman
Sue Anne Herrmann
Gus Martinez, Potential CYC Commissioner
Lisa Salazar, Potential CYC Commissioner
Sparky Griego, Potential CYC Commissioner
Chuck Vokes, Buckman Direct Diversion Facilities Manager
Bernadine Padilla, BDD
Chris Eisenberg, Teen Parent Coordinator, SFPS
Fran Lucero, Stenographer

2. **Approval of Agenda:**

Request to do Teen Parent Center Presentation first under New Business.

Table to next meeting, no quorum.

3. **Approval of Minutes**

Table to next meeting, no quorum.

4. New Business

A. Muchas Gracias Awards: Sue Anne Herrmann, Ernestine Gallegos de Hagman and Michael J. Multari

Sue Anne Hermann and Ernestine Gallegos de Hagman (Michael Multari was unable to attend today). Thank you so much for the many years of participation in the Children and Youth Commission. Ms. Rodriguez expressed her sincerest of thanks for all of the positive direction that the CYC moved forward on under the direction of Ms. Herrmann and the participation of Ms. Gallegos de Hagman. Mr. Sanchez expressed his thank you.

B. Buckman Direct Diversion Project Presentation

Introduction of staff. Chuck Vokes, Buckman Direct Diversion Facilities Manager - Bernadine Padilla, BDD

A new reliable and sustainable source of drinking water for Santa Fe – 4th alternative source for water in our community. The city of Santa Fe had native water rights with the San Juan Chama river rights. City of Santa Fe, Las Campanas and Santa Fe County joined to cohesively distribute the water. All processes for the water are above any water in the state of New Mexico, we are lucky to have such great tasting water. BDD is overseen by the Santa Fe County Commission and the City Councilors for joint administration of the water rights. The BDD Board would like to see the BDD as a site for the community to visit the facility. BDD is 11 miles from the river to the plant and 111 feet up to the facility. Presently they are processing approximately 6 million gallons of water for the city of Santa Fe. One of the directives from the Board is to bring SFPS into these programs. BDD wants to be a host site to mentor and to provide internships. The invitation was extended to the Children and Youth Commissioners to see where the children could fit in to the programs offered by BDD. The environment is excellent. There are so many learning tactics in math and science. Next steps are to meet with the city staff and to evaluate the programs and community service that could be done. Right now BDD is working with the SFPS to conduct tours. Santa Fe Prep has also done a tour of the space and in return a class from Seattle, WA also visited. It is recommended to allow at least 3 hours for the tour. There are 3 tanks that hold 8 million gallons of water which is very interesting to those who tour.

Mr. Sanchez said he will work with Ms. Padilla to evaluate the programs that the kids could participate in. The Teen Center would be a great group to participate in this program. A good number for a tour is about 15 individuals. BDD welcomes a tour any time between Tuesday, Wednesday or Thursday between 9 am and 3 pm.

C. SFPS Teen Parent Center Presentation

Chris Eisenberg, Coordinator (Exhibit A – SFPS Teen Parent Center flyer) Program started within Santa Fe High and Capital High School. Every high school student who is a parent is afforded a parenting class, 10 competencies covered through that class. There are classes on financing, checkbook management, credit scores, etc., how do they take care of their health and the health of their children, how they access the social services. Goal is to bring information into the class room so they don't have to miss school. Planned Parenthood of Santa Fe does couples work with the young parents so they know how to understand each other whether married or single. Santa Fe High has had more changes and Capital High has been more consistent with their services. There are many children care centers throughout the city offered by PMS (Presbyterian Medical Services).

Upcoming: SFPS opened ENGAGE which is for 17-22 year olds who have left school. When the application was made for NM Grads it was made for SFHS and Capital. ENGAGE was not included and it is needed; as of today there are 28 parents, in some cases it is a single mom and in some cases mom and dad and 30 children at the school. Case management will be needed and funding will be re-directed to ENGAGE for this effort. NM Grad/PMS has provided money to open another classroom, it only accommodates 8 kids.

Wish List: Interested in creating dual enrollment for high school students to create the confidence that they can go to college. Ms. Eisenberg will also meet with the SFCC. The program, Mother Tongue is where the parent writes about their experience as a parent, they will get an English credit for participating. Former teen parents who are successful in the work force will be paired up to show that diligence can accomplish a successful tract. Parent/Teacher newsletter will be distributed once a month. Exhibit A gives a good explanation on Title IX.

D. Approval of Santa Fe Teen Arts Center/W21 Scope of Services and Budget

Table to next month meeting, no quorum.

E. Introduction of candidates interested in becoming a Commissioner for the Children and Youth Commission.

Gus Martinez – Lifetime resident of Santa Fe and his four children are all enrolled in schools in Santa Fe. Mr. Martinez is very involved in the lives of our children in school, talks to at risk fathers through Reel Fathers and believes in community involvement to help our kids. He is involved in sports and wants to work with our kids at risk.

Lisa Salazar – Recommended by City Councilor Carmichael Dominguez, she is the Director for the GED Program, State of New Mexico. Ms. Salazar manages 30 training centers throughout the state. Ms. Salazar is a Licensed Clinical Counselor. She has a passion to work with children at risk so they can have a chance at a better life.

Sparky Griego – Has been a school teacher for 26 years, she has worked with children at risk. She is presently an intervention staff member at DeVargas Middle school. Ms. Griego has worked with kids for a very long time and is very interested in participating in the Commission.

5. Old Business

A. Data Project RFQ Discussion

Table to next month meeting, no quorum.

6. Comments from the Chair and Commissioners

The Chair and Mr. Sanchez are working on the 1–page presentation for City Council. It will be sent to the commissioners for comments.

7. Report from Staff

A. Update on Mayor Gonzales Anti-Bullying Campaign

Mr. Bustamante said that the presentation was really handled well, it was very constructive and they worked on the source. It dealt with the issue and they were hopeful on how to address the problem.

Mr. Sanchez said that it was well attended; there were approximately 150 people in attendance. A movie was viewed which was outcome driven and more directed to kindness; parents were very supportive. Follow up meetings are to take place. November 11, 2014 is the follow up meeting with the parents.

Ms. Rodriguez said that this forum was a very positive process. There were representatives from the Sky Center who will assist those parents who have children being bullied right now.

B. Update on Mayor Gonzales Children, Youth and Family Community Cabinet meeting.

Chair Lefrak said that the first cabinet meeting was very successful. They broke up in to smaller groups and discussed with the stakeholders who are the funders to come up with the indicators to make a difference. Information was collected and will be analyzed; update will be brought back to each following monthly meeting.

Cabinet Secretary from NM Workforce Solution, Deputy Secretary from NMPED and Deputy Secretary from CYFD were in attendance with many prominent community leaders who are invested in working on these issues. One goal is to work from the community perspective, hearing from the parents and our kids.

The Chair was pleased that they wanted to use the strategy paper and indicators put together from the Children and Youth Commission.

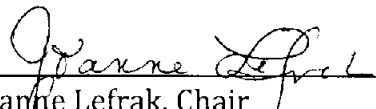
8. Matters from the Floor

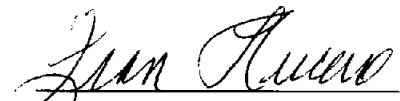
The website is very outdated. The Chair asked for pictures and new bios for the commissioners and that they be sent to Mr. Sanchez.

9. Adjournment

There being no further business to come before the Children and Youth Commission, the meeting was adjourned at 7:25 pm.

Signature Page:


Joanne Lefrak, Chair


Fran Lucero, Stenographer

Santa Fe Public Schools Teen Parent Center

October 2014

Newsletter

The Teen Parent Center Working Together with the Community to Serve our Students

The start of the new school year brings several exciting changes to the Teen Parent Center (TPC) at Santa Fe Public Schools. As many of you have heard there were several personnel changes. The Center is now being coordinated by Chris Eisenberg. Chris comes to us with 25 years of experience in public education. She was an advisory board member of one of the first Teen Health Clinics in New Mexico, a middle school administrator and a former Special Education, Health and Mental Health Director. Her past experiences have already served us well as she has aligned budgets and planning to fit student needs.

In addition, we have hired Leah O'Shell to teach the NM GRADS class at Santa Fe High School. Ms. O'Shell is familiar to school advocates as she has supported our "At Risk" youth to receive much needed support services. Her

experience in student advocacy is an asset to the students.

Meanwhile the NM GRADS class will begin second semester at Capital as the teacher who will be teaching the class is currently on maternity leave. We know she will be able to relate to the student experience upon her return.

Currently, students at Capital meet weekly for case management and support with Janet Aboytes. Ms. Aboytes is a former coordinator for the TPC and her experience has helped the students access needed services. We are very thankful that she is contributing her talent to our team.

The most recent addition to the team is Christine Esquibel. She is taking on the position of Academic Case Manager. We listened to our student requests and reviewed data to determine that the greatest area of

need was for academic support. All of the students desire to graduate from high school and this will help them to fulfill their dreams.

Rounding off our team are the various agencies that give so generously of their time and resources. The following agencies have reestablished their partnership with us and have begun providing critical support to our students: City of Santa Fe, Women, Infants and Children (WIC), Las Cumbres, Young Fathers of Santa Fe, Many Mothers, United Way First Born Program, Presbyterian Medical Services, NM Department of Health Fetal Alcohol Syndrome Project, Planned Parenthood, Teen Health Center, Adelante and Impact. NM GRADS has supported us in this first year of program implementation. Several more agencies have contacted us and proposed additional partnerships. We are looking forward to these partnerships.

October is National Domestic Violence Awareness Month. 1 out of every 10 teenagers are physically hurt by someone they are dating. We are committed to educating our students on how to identify incidents of domestic violence and how to report it so that they may protect themselves and their children.



Change? What Change?

Several of you have contacted members of the Teen Center staff to inquire about the changes that have been made to the program model at Santa Fe High School.

It is important to know that the program model at Capital High School remains the same and SFHS is being changed to replicate that same model. In

the model students will be attending classes with their peers, allowing them access to the general education curriculum as mandated in Title IX. All of the students will continue to receive case management to connect them with our community providers. Their children will continue to have childcare provided through PMS and students

enrolled in the parenting class are receiving research supported NM GRADS competencies.

Additionally, services will be expanded in the coming months to teen parents attending Santa Fe Public Schools at other locations.

NM GRADS, Proven Program Proven Results

NM GRADS is celebrating its 25th year in NM. It serves 28 school districts in the area. The goals of the NM GRADS program are: to reduce repeat pregnancies; retain students through graduation; develop positive parenting skills; develop skills for healthy relationships; foster a balance of work and family roles; prepare students for work and careers; reduce low birth weight babies; demonstrate positive health care practices and provide access to safe competent child care. Last year 82% of GRADS mothers graduated compared to only about 50% of teen mothers nationwide!

Erin A.

Partnership As a Model for Meeting Student Outcomes

Last week members of the Teen Parent Center attended the Healthy Teen Network Conference in Austin, Texas. This educational opportunity allowed members to participate in the national conversation regarding services to young parents. The current dialogue on the national level emphasizes strengthening community partnerships to meet student needs.

High quality collaboration requires that all community providers who have a stake in a problem constructively develop joint strategies for community implementation. It was inspiring to discover that the community of Santa Fe could be a national model for high level partnerships. As many communities were describing their journey, the TPC Center in Santa Fe is already incorporating much of what others are striving to achieve. Several of the programs described took place in the community outside of the school hours. Santa Fe was unique in that both the school and community supports are offered within the school. The many agencies that work tirelessly to support quality early childhood outcomes through collaborative partnership within the schools are to be applauded in their efforts. This approach supports graduation as a goal.

The conference objectives included identifying partnerships and innovative collaborative approaches that engage communities to help support healthy adolescents and young adults, including pregnant and parenting teens, identifying effective strategies to build organizational capacity and identifying effective strategies to sustain effective programs and services. The current partnerships between SFPS and community organizations which are implemented within the school speak to a joint vision for our teen parents in alignment with the national trend. As we continue to collaborate our ability to be adaptive and creative will continue to foster

a collective responsibility to quality outcomes for our students and their children. Our responses will continue to require innovation, advocacy and mutual support in order to assure an aligned approach to student success. Together we will make a difference in the lives of our students!

The TPC values the dialogue with all of our fellow care providers and the provocative conversations that challenge our current methods in order to achieve the greatest benefit for our students. We hope to share the accomplishments of the Santa Fe community by pursuing the opportunity to present at next year's conference.

But Why Title IX?

Title IX of the Education Amendments of 1972 protects people from discrimination based on sex, this includes pregnancy and teen parents.

Major provisions for pregnant or parenting youth:

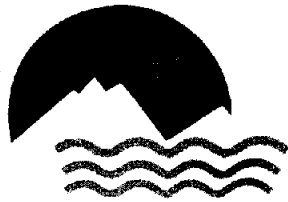
- Equal access to school and activities.
- Medical excuse from school for delivery of a child.
- Specialized programs or schools for pregnant or parenting teens must be voluntary.
- All previous school services must continue.
- Equal access to educational and extracurricular activities must be provided.

Despite Title IX's prohibition against sex discrimination, there are schools across the country that continue to bar pregnant and parenting students from activities, kick them out of school, pressure them to attend alternative programs, and penalize them for pregnancy-related absences.

Parenthood is not the end of the road for teen parents. Quite the contrary, mother/fatherhood can serve as an educational motivator for many young parents. Unfortunately, educational barriers and discrimination often thwart this drive and determination. Oftentimes the desire to "shelter or protect" students restricts access to equal opportunities. Title IX seeks to level the playing field for all of our students. [Source: www.Titleix.info]

The sum total of us all is greater than any one of us individually.

A New Reliable and Sustainable Source of Drinking Water for Santa Fe



Buckman Direct Diversion Project

Completed On-Time
and On-Budget

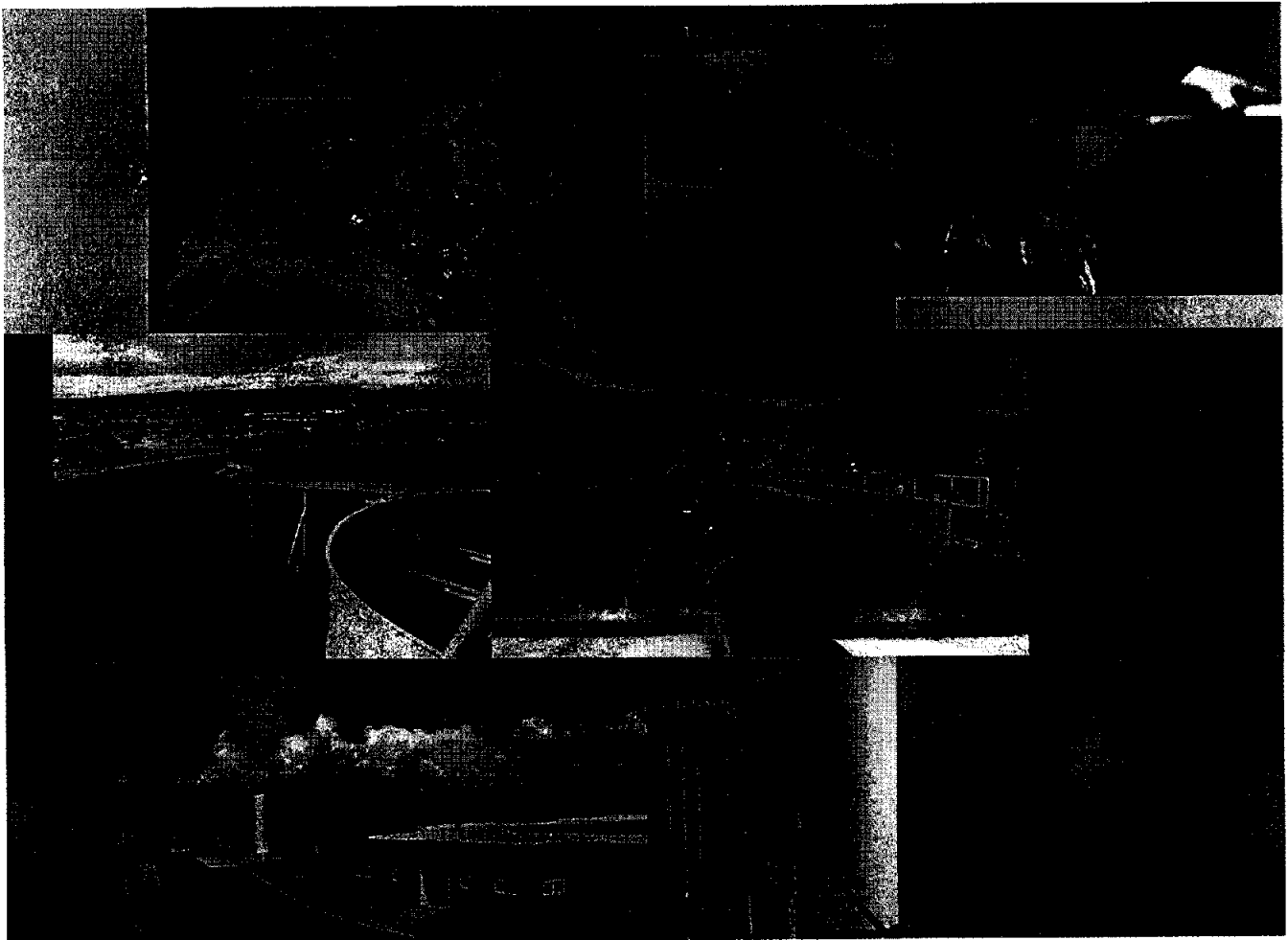


Table of Contents

Turn on your tap and raise your glass to our new source of excellent and sustainable drinking water!

Collaboration, stewardship and transparency have been the defining principals of the Buckman Direct Diversion (BDD) Board. There has been an unparalleled level of collaboration to implement and operate one of the largest, most costly nonfederal public works project in Northern New Mexico, as illustrated by the number of groups and individuals on the back cover who have participated in the process.

In our fiscal stewardship role, the BDD Board has ensured the completed project is on time and on budget.

In our environmental stewardship role, we have partnered with others so wildlife, aquatic and plant habitats are improved. We are reducing our carbon footprint and saving ratepayers money by using solar power to help run BDD facilities.

Water quality stewardship has been a priority from day one. We are diligent on many fronts to protect the quality of the Rio Grande and ensure your drinking water is safe. We are confident your drinking water will not only be safe, but taste and smell good.

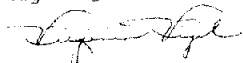
As we begin operating the Buckman Regional Water Treatment Plant, the BDD Board is committed to continued transparency. Rio Grande monitoring and results from drinking water quality testing will be posted on our website, www.bddproject.org. The newly hired BDD Management staff are committed professionals ready to serve the City of Santa Fe and Santa Fe County residential and business water customers.

A decade ago Santa Fe experienced a severe drought. The BDD was implemented to protect us from running out of water in times of drought, and to allow our regional aquifer to rest.

Drink up Santa Fe! This new, reliable, sustainable and safe public water supply is here to meet customer water needs.

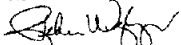
Cheers,

Virginia Vigil



Chair, BDD Project Board
Chair, County Commission

Rebecca Wurzbarger



Vice-Chair, BDD Project Board
Mayor Pro Tem, Santa Fe City Council

BDD Project Board Members



A New Source of Excellent Drinking Water

Using our Water Sources Wisely

After nearly a decade in development, the Buckman Direct Diversion Board (BDD) has assumed responsibility for the day-to-day operations, management and maintenance of the Buckman Regional Water Treatment Plant (BRWTP) and facilities.

During the severe drought experienced by Santa Fe from the late 1990s to 2002, the City of Santa Fe and Santa Fe County designed a sustainable water supply project to help protect our region from running out of water during a drought. Despite ongoing, very successful water conservation programs, the Santa Fe region does not have enough reliable and sustainable drinking water to meet current needs. Until now, we have depended on the limited water from rain and snow runoff stored in the Santa Fe River reservoirs and groundwater pumped from the two regional aquifers. Even in the best of years, the Upper Canyon Santa Fe River reservoirs can only supply about half of the water our region needs. In very dry years, they cannot supply much water at all. The rest has come from groundwater, which we have been pumping at rates beyond the sustainable limits of our aquifers. By using our water from the Rio Grande, groundwater pumping will be dramatically reduced, thus allowing the aquifers to rest and recover.

A Fourth Source of Water

This new water supply source is reliable, sustainable and provides flexibility in how we choose to use the different supply sources for water delivery. Operation of all four sources will continue to meet the needs of City and County water system customers, improve the regional public water supply under drought conditions, replace unsustainable groundwater pumping and making a drought reserve possible. The City will not need additional water supplies until after 2030. The County's share of the BDD will satisfy their requirements for decades.

Protecting the Aquifer

The reduced amount of groundwater pumping will allow the aquifer to rest and refill. The aquifer is most valuable if we reserve it for use in times of drought, and reduce our use during normal times so that it will be here for our children, and their children. Reduced groundwater pumping also protects the surface water supplies in La Cienega Springs and in the Rios Tesuque, Nambé, and Pojoaque.

Who Gets the Water

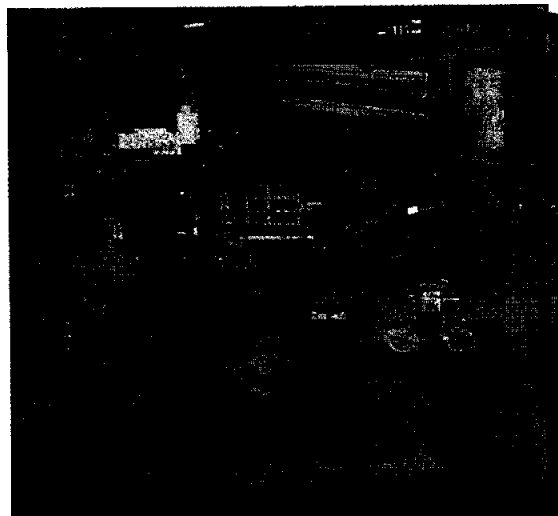
The treated drinking water will be distributed throughout the City and the County's water systems to all Santa Fe customers.

How The BDD Works

Water is pumped (diverted) from the Rio Grande on the east river bank three miles below the Otowi Bridge. Sand is removed from the water and returned to the Rio Grande. Water is then pumped underground 11 miles and 1,100 vertical feet uphill to the Buckman Regional Water Treatment Plant (BRWTP). Las Campanas will also receive untreated river water. The BDD then makes bulk wholesale deliveries to the City and the County by pumping treated drinking water to the independent public water systems they own.

The BDD includes a diversion structure on the Rio Grande; a sand removal facility; two raw water booster stations; two treated water pump stations; 12 million gallons of water storage capacity, and 31 miles of raw and finished water pipelines.

The BDD helps make the Santa Fe Living River Project possible as a refuge for animals and a rich environment for play and exploration by all ages.



Excellent Quality, Safe Drinking Water

BDD treated drinking water will be of excellent quality and safe to drink. In addition to assuring that BDD Project drinking water will be better than the safe drinking water quality requirements, the BDD Board has proactively addressed community concerns about potential LANL contamination as it relates to the BDD drinking water. The BDD Board has been active on many fronts to: (1) assure BDD drinking water meets all safe drinking water standards; and (2) measure and publicize the potential occurrence of LANL origin contaminants in the river upstream of the diversion structure and make public the results of analytical tests performed on drinking water.

Early Notification System

As an added measure of drinking water quality assurance, the BDD will not divert water from the Rio Grande when Los Alamos Canyon storm flows are five cubic-feet-per-second or higher. Real-time computerized gauges in the canyon measure the amount of water running in the canyon and will send an immediate signal, which can automatically shut down the water diversion until the storm flow has passed.



State-of-the-Art Water Treatment Plant Processes

The BRWTP will produce drinking water that is better than required by all federal and state safe drinking water standards. The water treatment plant includes a set of highly effective, state-of-the-art and costly advanced water treatment processes that provide multiple, effective barriers for removal of contaminants.

The BRWTP will effectively remove or kill pathogens. Most other con-

taminants are attached to particles of sediment such as sand, silt and clay. The water treatment plant will remove at least 99.99 percent of all sediment particles and contaminants attached to them using one of the most effective particle removal processes available. The water treatment plant will also effectively remove arsenic, uranium, pharmaceuticals and personal care products, and precursors of disinfection by-products.

Monitoring Testing And Reporting

Water quality is monitored by computerized on-line instruments at each stage of the treatment process to ensure the drinking water is safe and meets all EPA and NMED standards. Frequent water quality tests are conducted, aided by an in-plant laboratory and a professional compliance officer. The compliance officer collects water samples to be tested at certified laboratories and submits monthly reports to NMED. These reports and other relevant water quality results will be shared with the community. As data becomes available, it will be posted on our website www.bddproject.org. The BDD will also provide an annual water quality report.

BDD operations will continuously comply with strict water quality assurance and water quality protocols 24/7/365 to ensure the water you drink is not only safe, but also looks, tastes, and smells good.

Economic Benefits

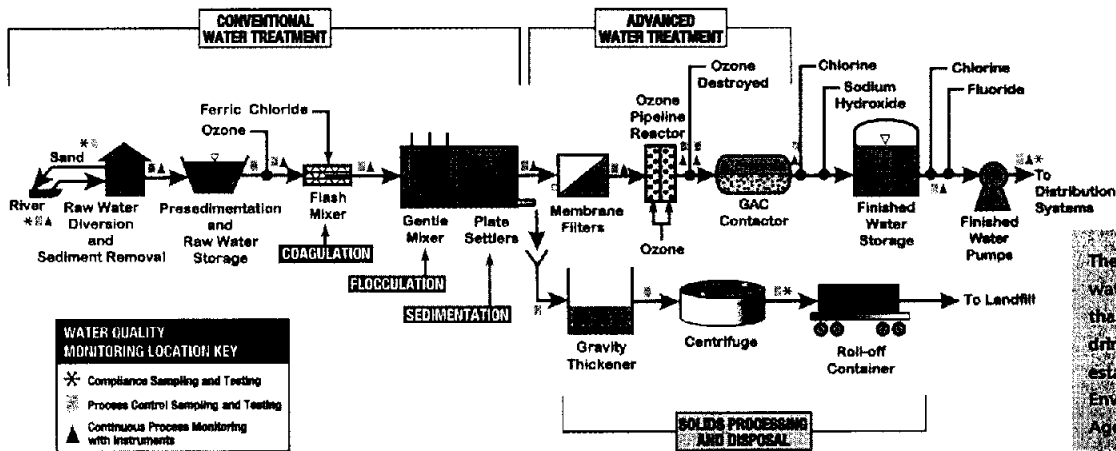
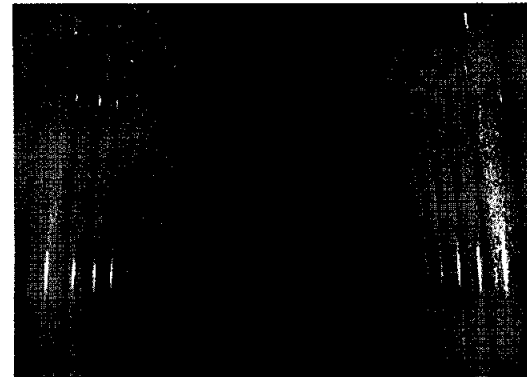
Major Economic Benefits

During the economic downturn, the BDD has provided more than \$350 million in construction economic benefits and generated more than 500 jobs per year during design and construction. Local gross receipt taxes generated over \$35 million in revenue for Santa Fe County and the state. The 33 professional employees who will manage, operate and maintain the BRWTP and facilities are expected to generate nearly \$3.4 million in annual payroll and benefits in the BDD's first full year of operation.

Creating Careers

Specialized Training and Certification – A Partnership with Santa Fe Community College

In October 2010, certified operators began a full-time training and internal BDD Project certification program. The BDD has formed a training partnership with Santa Fe Community College (SFCC) to help create ongoing training skills and certification programs for New Mexicans as well as encourage local residents to consider a career with the BDD. We are creating a 'grow our own' pipeline of interested young SFCC graduates who will stay in New Mexico to pursue a career in water systems operation and management.



The BDD Project drinking water will be better than the stringent drinking water standards established by the U.S. Environmental Protection Agency (EPA).

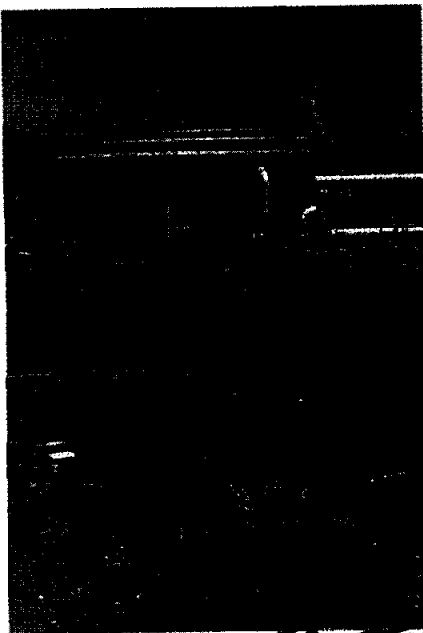
BDD Construction On-Time and On-Budget

Construction was completed in December 2010 on schedule and on budget as a result of proactively monitoring costs and addressing challenges such as material cost fluctuations.

As of January 1, 2011:

- Construction period: 09/08/08 – 12/31/10
- 99.9% of construction completed
- 96% of construction budget spent
- Total Cost: \$221.74 million (state and local funding only)
- Over \$350 million in direct, indirect and induced local economic impact
- Over \$3.5 million in local GRT tax receipts
- \$17.45 million in State and Federal Grants to date
- \$15.80 million in State Low-Interest Loans to date

The BDD project is one of the largest and most complex non-federal public works projects in Northern New Mexico history.



Construction Fun Facts

A total of
31 miles
of pipeline installed

Placed more than
13,000 cubic yards
of concrete

Excavated/moved approximately
250,000 cubic yards
of dirt (balanced on-site)

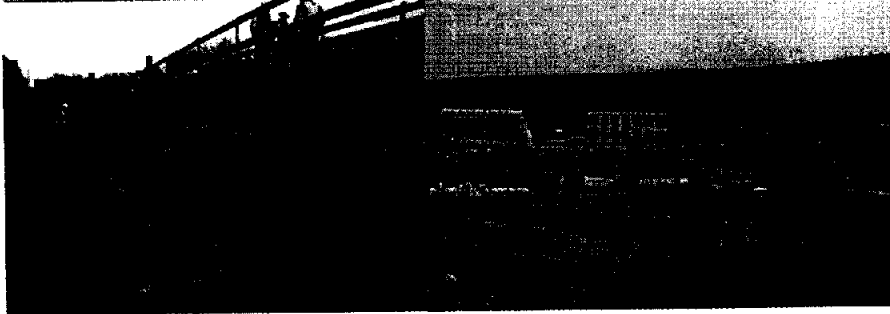
Placed more than
2.4 million pounds
of rebar

Placed more than
400,000 pounds
of structural steel

Recorded more than
520,000 person hours
of labor

Employed more than
850 workers
(design and construction)

Production of drinking water:
8,730 acre-feet
per year and
peak capacity of
15 million gallons
per day



Governance & Operations

Who's Responsible for the BDD

The City of Santa Fe and Santa Fe County created the BDD Board through a Joint Powers Agreement in 2005 to oversee implementation and operation of Project. The City and County are joint owners of the BDD Project and share the cost equally. The City of Santa Fe Water Division manages the BDD Project and staff under contract with the BDD Board.

Las Campanas is a limited partner, not an owner, and has paid for the project to deliver untreated river water. Recently, Las Campanas contracted with the County for a "bulk water" drinking water supply. At this time, Las Campanas has not built the facilities it requires to use any BDD Project water, but does have plans/design in process.

Construction of the BDD was completed by the Design-Build Contractor, CH2M Hill/Western Summit Joint Venture. In April 2011 the Contractor demonstrated everything met contract requirements, including water quality. On May 1, 2011, the City and County assumed management and operations of BDD facilities.

Meet the New BDD Management, Operations, and Maintenance Staff

The BRWTP is run by 33 public employees. The staff is led by Robert Mulvey, a professional Water Utility Manager. He has 30 years of experience, and has overseen the design, construction, and operations of modern water treatment facilities that produce safe drinking water from river water.

Six supervisors and professional staff will assist Robert.

Other operations and maintenance staff include advanced water treatment plant operators, instrument/automation technicians, electricians, equipment repairmen, a laboratory technician, and a warehouse clerk.

Millions of Americans across the country rely on caring professionals to provide safe, healthy drinking water to their communities. Citizens trust water flowing from their taps will be free of water-borne contaminants such as bacteria, viruses, and other unhealthful compounds. Water Treatment Plant Operators are true experts, committed to providing the highest quality water in communities to which they are so closely connected.

As I reflect on my 30-year career in water utility management, I'm convinced the Buckman Regional Water Treatment Plant Operators are among the most capable and dedicated people in the industry. In order to qualify, each individual met strict competency standards and completed a rigorous training program. The men and women at the BDD pledge to earn your trust, and are honored to play such an important role in sustaining a high quality of life in Santa Fe Communities.

BDD Operator Hunter Stanland recently conveyed the attitude of everyone here at the BDD:

"One of my proudest moments was being selected for the BDD team. I look forward to serving my community."

The Buckman Regional Water Treatment Plant guarantees the City of Santa Fe and Santa Fe County will enjoy a reliable, safe water supply for years to come. The community can be proud of this new facility and the people entrusted to carry out this important mission.

Sincerely,

Robert Mulvey
Robert J. Mulvey,
BDD Facilities Manager



ABOVE, left to right: Shannon Jones, Gary Durrant, Erika Schwender, Eric Armstrong, Shelly Larson, Robert Mulvey. LEFT, a team of experienced operations and maintenance staff will watch over the Water Treatment Plant.

Environmental Stewardship

Special Place

The only place near Santa Fe with convenient public access to the Rio Grande is the BDD water intake, located at the Canada Ancha confluence with the Rio Grande, north of Diablo Canyon, at the end of Buckman Road. This area has high wildlife and recreation values.

Restoring and Improving Natural Habitats

From planning to construction and operation, the BDD has many features to protect the environment and minimize project impacts. The Final Environmental Impact Statement (EIS), the U.S. Fish & Wildlife Services' Biological Opinion, and the Fish and Wildlife Coordination Act Report found that, for a project of its size and complexity, the BDD is expected to have a very minor effect on the environment.

By reducing groundwater pumping, the BDD will also reduce the depletion of Rio Grande tributaries, including La Cienega springs and the Rios Tesuque, Nambe and Pojoaque. Saving these tributaries and the aquifer are major environmental benefits.

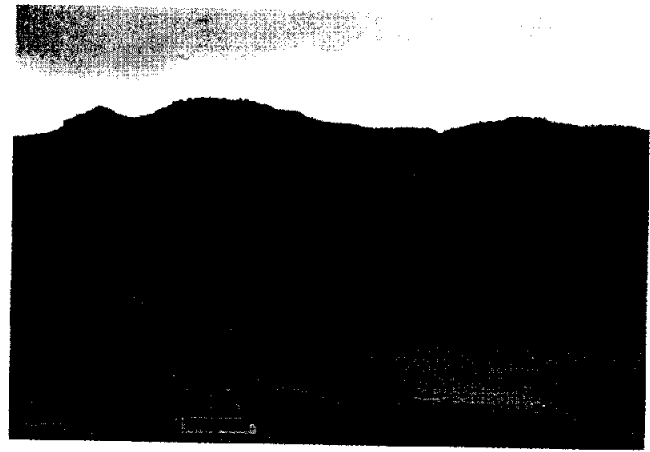
The BDD is required to improve upland, riparian, and aquatic wildlife habitat to offset any adverse environmental impacts.

Supporting Wildlife

The BDD will improve about seven acres of habitat along the river floodplain for various wildlife species, including songbirds, amphibians, reptiles, small mammals and raptors. The improvement, or "mitigation" plan, will also affect 25 habitat acres of "upland" areas adjacent to the floodplain, restoring native wildlife habitat, removing exotic vegetation and replacing it with native plants.

Maximizing Benefits – A Collaborative Effort

To maximize the benefits of the mitigation effort, the BDD is collaborating with the U.S. Forest Service,



Shown: The Top of the Diversion Structure. Can You See It?

Bureau of Land Management, New Mexico Wildlife Federation (NMWF), U.S. Fish and Wildlife Service, the New Mexico Game and Fish Department, and others. The NMWF has been awarded a grant through the State of New Mexico's River Ecosystem Restoration Initiative (RERI) to fund additional removal of non-native vegetation and planting of native trees such as cottonwood and willow along the floodplain near the BDD. The BDD habitat restoration and the NMWF riparian restoration are complementary and coordinated.

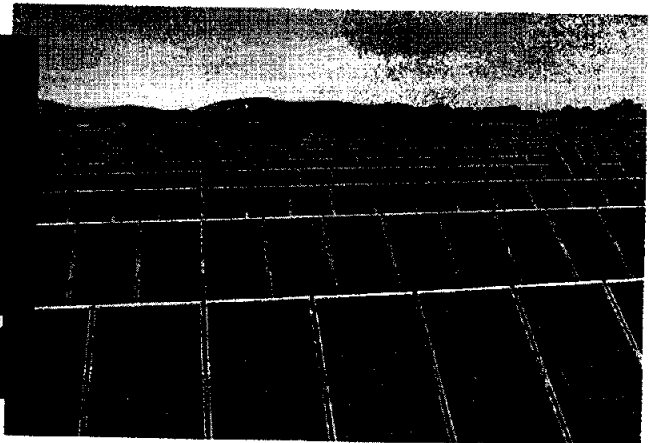
It is anticipated that the NMWF work will include parking area improvements at the head of Diablo Canyon and walking trails with interpretive signs at Diablo Canyon and near the river.

Safe Recreational Access

The BDD is paying for additional law enforcement presence along Buckman Road to the Rio Grande through 2013 to help protect wildlife habitat improvements and reduce damage caused by uncontrolled off-road vehicle use. The BLM federal law enforcement ranger also will enforce restrictions on use of firearms on Forest Service land adjacent to the Rio Grande and speed limits on Buckman Road.

BDD Goes Solar – Reducing Our Carbon Footprint and Utility Costs

It takes a lot of electricity to move a lot of water a long way uphill. Solar electricity is providing a substantial amount of the power required to operate the BRWTR. The BDD contracted with a solar developer, American Capital Energy, Inc. (ACE), to build, own, and operate a one-megawatt solar generator on land next to the water treatment plant. Solar electricity will supply most of the water treatment plant requirements when the sun is shining brightly and about 30 percent of the total annual electrical energy. Construction of the solar power plant is complete and includes eight acres of solar panels providing electricity to the Buckman Regional Water Treatment Plant. The solar energy is green and reduces total BDD operations costs.





Buckman Direct Diversion Project



The Community is Invited to Attend the BDD Dedication Celebration
Sunday, June 12, 2-4 pm at the Buckman Regional Water Treatment Plant
341 Caja Del Rio Road
Walking Tours and Refreshments Provided
Please RSVP to lynn@nm.net or 660-7682

**In Appreciation of the People of New Mexico Who
 Made This Project Possible Through Public Funding**

***Thank You for Your Collaborative Participation To Deliver a New, Reliable
 and Sustainable Source of Drinking Water to the Santa Fe Community***

Santa Fe Rate-Paying Customers

Current and Former BDD Board Members

Public Member Cosuelo Bokum

CITY OF SANTA FE

Councilor Chris Calvert
 Councilor Karen Heldmeyer
 Councilor Rosemary Romero
 Mayor Pro Tem Rebecca Wurzbarger

SANTA FE COUNTY

Commissioner Paul Campos
 Commissioner Harry Montoya
 Commissioner Liz Stefanics
 Commissioner Jack Sullivan
 Commissioner Virginia Vigil

City of Santa Fe – Project Owner

Mayor David Coss
 Former Mayor Larry Delgado
 City Council
 City Attorney's Office
 Sangre de Cristo Water Division
 Public Utilities Department
 Conservation Division

Santa Fe County – BDD Project Owner

County Commission
 County Attorney's Office
 Santa Fe County Water Utility Division
 Santa Fe County Water Conservation
 Santa Fe County Water/Wastewater Resources

**Las Campanas, LCLP –
 BDD Project Limited Partner**

BDD Project Federal & State Partners

U.S. Bureau of Land Management
 U.S. Department of Energy
 U.S. Forest Service
 U.S. Environmental Protection Agency
 U.S. Fish & Wildlife Service
 U.S. Army Corps of Engineers
 Bureau of Reclamation
 New Mexico Environment Department
 Drinking Water Bureau

Ground Water Quality Bureau
 Surface Water Quality Bureau
 DOE Oversight Bureau
 Hazardous Waste Bureau
 New Mexico Finance Authority
 New Mexico Water Trust Board
 New Mexico Construction Industries Division
 New Mexico Department of Transportation
 Office of the State Engineer
 Interstate Stream Commission
 Jemez y Sangre Regional Water Plan
 New Mexico State Land Office
 Santa Fe National Forest, Española Ranger District
 Taos Office of Bureau of Land Management
 New Mexico Office of Workforce Solutions

New Mexico State Legislature

Special thanks to:
 Representative Jim Trujillo
 Representative Brian Egolf
 The Energy & Natural Resource Committee

**New Mexico United States Congressional
 Delegation**

Special Thanks to:
 U.S. Senator Jeff Bingaman
 U.S. Senator Tom Udall
 Representative Ben Ray Lujan

**Northern Pueblos Tributary
 Water Rights Association:**

Nambe Pueblo
 Pojoaque Pueblo
 Tesuque Pueblo
 San Ildefonso Pueblo

Community Representatives

Neva Van Peski
 New Mexico Citizen Review Advisory Committee
 Northern New Mexico Citizen Advisory Board
 SF Community Foundation (RACER)

**Los Alamos National Laboratory
 Los Alamos National Security, LLC
 National Nuclear Security Administration**

**Public Service Company
 of New Mexico**

BDD Project Team

Project Manager, Rick Carpenter
 Design-Build Contractor, CH2M Hill/
 Western Summit Constructors Joint Venture
 Board Engineer, Camp Dresser McKee
 American Capital Energy, Inc.
 Atkinson & Co. LTD
 Black and Beach
 Brown and Caldwell, Inc.
 ChemRisk, LLC
 Cliburn and Associates, LLC
 Cooney, Watson & Associates, Inc.
 EnerNOC
 Essential Utilities, Inc.
 The Ferguson Group
 K&L Gates
 Norm Gaume, P.E.
 Harwood Consulting
 Kerry J. Howe, P.E., BCEE
 Long, Pound & Komer, PC
 MAR Global Services
 Modrall Sperling
 Meyners & Company, LLC
 Parametrix, Inc.
 Pitcher Komer Public Relations, LLC
 RedOak Consulting
 Santa Fe Community College
 SWCA Environmental Consultants
 WRISC, Inc.

We apologize if we have inadvertently
 left out any names.

What If I Have Questions About My Water?

Email questions to
buckmanwaterinfo@ci.santa-fe.nm.us
 or call (505) 955-4555

How Do I Get More Information?

Visit the project website at
www.bddproject.org;

Or contact

Lynn Pitcher Komer, PK Public Relations,
 505-660-7682 (lynn@nm.net)