



# Agenda

CITY CLERK'S OFFICE

DATE 4/18/16 TIME 10:30am

SERVED BY Jessie Espurza

RECEIVED BY [Signature]

**Parks and Recreation Advisory Commission (PARC)  
Genoveva Chavez Community Center- Conference Room- 3221 Rodeo Rd.  
Tuesday, April 19, 2016  
5:30 p.m. – 6:30 p.m.**

1. Call to Order
2. Roll Call
3. Review and Approval of the Minutes – March 15, 2016
4. Approval of the Agenda
5. Parks and Recreational Department Update
6. New Business
  - A. AN ORDINANCE AUTHORIZING AN AMENDMENT TO THE 2012 GENERAL OBLIGATION (GO) BOND PARKS AND TRAILS IMPLEMENTATION PLAN TO REALLOCATE \$311,354 CURRENTLY DESIGNATED FOR VARIOUS CITY PARK IMPROVEMENTS TO OTHER CITY PARKS WITH HIGH MAINTENANCE NEEDS. (Councilors Maestas, Trujillo and Dominguez) (Robert Carter)
  - B. A RESOLUTION SUPPORTING THE PARTY ON THE PITCH SOCCER TOURNAMENT TO BE HELD AT THE SANTA FE DOWNS MAY 21-22, 2016. (Councilor Rivera) (Jesse Guillen)
7. Presentation - MRC
8. Old Business:
  - a. Discussion of 2008 Parks Bond Reallocation
  - b. Community Days Volunteers
  - c. Parks and Recreation Master Plan Update
9. Public Comment
10. Commissioner Comments
11. Confirm date, time and location for the next meeting (Tuesday, May 17, 2016)
12. Adjournment

Persons with disabilities in need of accommodations, contact the City Clerk's office at 955-6520, five (5) working days prior to meeting date.

**SUMMARY OF ACTION  
PARKS AND RECREATION ADVISORY COMMISSION  
GENOVEVA CHAVEZ COMMUNITY CENTER  
CONFERENCE ROOM, 3221 RODEO ROAD  
Thursday, April 19, 2016, 5:30 pm**

<b><u>ITEM</u></b>	<b><u>ACTION</u></b>	<b><u>PAGE</u></b>
<b>CALL TO ORDER</b>		<b>1</b>
<b>ROLL CALL</b>	<b>QUORUM</b>	<b>1</b>
<b>REVIEW AND APPROVAL OF MINUTES March 15, 2016</b>	<b>APPROVED</b>	<b>1</b>
<b>APPROVAL OF AGENDA</b>	<b>APPROVED</b>	<b>1-2</b>
<b>PARKS AND RECREATION DEPARTMENT UPDATE</b>	<b>INFORMATION/DISCUSSION</b>	<b>2</b>
<b><u>NEW BUSINESS</u></b>		
<b>AN ORDINANCE AUTHORIZING AND AMENDMENT TO THE 2012 GENERAL OBLIGATION (GO) BOND PARKS AND TRAILS IMPLEMENTATION PLAN TO REALLOCATE \$311,354 CURRENTLY DESIGNATED FOR VARIOUS CITY PARK IMPROVEMENTS TO OTHER CITY PARKS WITH HIGH MAINTENANCE NEEDS.</b>	<b>APPROVED</b>	<b>2-3</b>
<b>A RESOLUTION SUPPORTING THE PARTY ON THE PITCH SOCCER TOURNAMENT TO BE HELD AT THE SANTA FE DOWNS MAY 21-22, 2016</b>	<b>APPROVED</b>	<b>3</b>
<b>PRESENTATION - MRC</b>	<b>INFORMATION/DISCUSSION</b>	<b>4-6</b>

**OLD BUSINESS**

<b>DISCUSSION OF 2008 PARKS BOND REALLOCATION</b>	<b>INFORMATION/DISCUSSION</b>	<b>6</b>
<b>COMMUNITY DAYS VOLUNTEERS</b>	<b>INFORMATION/DISCUSSION</b>	<b>6</b>
<b>PARKS AND RECREATION MASTER PLAN UPDATE</b>	<b>INFORMATION/DISCUSSION</b>	<b>7</b>
<b>PUBLIC COMMENT</b>	<b>NONE</b>	<b>7</b>
<b>COMMISSIONER COMMENTS</b>	<b>INFORMATION/DISCUSSION</b>	<b>7</b>
<b>CONFIRM DATE, TIME AND LOCATION FOR THE NEXT MEETING (TUESDAY, MAY 17, 2016)</b>	<b>APPROVED</b>	<b>7</b>
<b>ADJOURNMENT</b>	<b>ADJOURNED</b>	<b>7-8</b>

**PARKS AND RECREATION ADVISORY COMMISSION  
GENOVEVA CHAVEZ COMMUNITY CENTER  
CONFERENCE ROOM, 3221 RODEO ROAD  
Tuesday, April 19, 2016, 5:30 pm**

**1. CALL TO ORDER**

The meeting of the Parks and Recreation Advisory Commission was called to order at approximately 5:30 pm, by Victoria Bruneni, Chair, on Tuesday, April 19, 2016, at the Genoveva Chavez Community Center Conference Room, 3221 Rodeo Road, Santa Fe, New Mexico.

**2. ROLL CALL**

**MEMBERS PRESENT**

Victoria Bruneni, Chair  
Damon Archuletta  
Bridget Wolf  
Linda R. Jackson  
Peggy Vasquez  
James Stodgel  
David Sidebottom

**MEMBERS ABSENT**

Warren Hix

**OTHERS PRESENT**

Rob Carter, Parks and Recreation Division Director  
Jennifer Romero, MRC Manager  
Alo Brodsky, Head Golf Pro  
Linda Zingle, Golf Course Advisory Subcommittee of PARC  
Elizabeth Martin, Stenographer

**3. REVIEW AND APPROVAL OF MINUTES  
March 15, 2016**

**MOTION** A motion was made by Commissioner Vasquez, seconded by Commissioner Jackson to approve the minutes as presented.

**VOTE** The motion passed unanimously by voice vote.

**4. APPROVAL OF AGENDA**

**MOTION** A motion was made by Commissioner Vasquez, seconded by Commissioner Sidebottom, to approve the agenda as presented.

**VOTE**        The motion passed unanimously by voice vote.

**5.     PARKS AND RECREATION DEPARTMENT UPDATE**

Mr. Carter reported that the Department is moving ahead on the budget. The Department has made a recommendation as part of the budget to increase fees and charges at all recreational facilities and the golf course to generate extra monies. They had not looked at rates for a long time. They also made recommendations to change some hours of operation. They are going to shut down the pool at the Genoveva Chavez Center one hour earlier during the week and earlier on weekends and holidays. That will also be done at Ft. Marcy. There is a lag of attendance in the evenings. The adjustment in times will eliminate some temporary positions and help them save money. The staff is getting ready for the busy summer season. They are putting up new signage that says no camping. They have had two RVs ticketed and towed out of Frank Ortiz Park. The golf course is gearing up for a big season. The skate park is out to RFP for construction. They are hoping to start construction in the Summer. Patrick Smith Park will be the first one worked on through the 2012 Park Bond.

**6.     NEW BUSINESS**

**A.     AN ORDINANCE AUTHORIZING AND AMENDMENT TO THE 2012  
GENERAL OBLIGATION (GO) BOND PARKS AND TRAILS  
IMPLEMENTATION PLAN TO REALLOCATE \$311,354 CURRENTLY  
DESIGNATED FOR VARIOUS CITY PARK IMPROVEMENTS TO  
OTHER CITY PARKS WITH HIGH MAINTENANCE NEEDS.**

Mr. Carter said this Ordinance is going to Public Hearing on the 27<sup>th</sup>. We wanted you to take a look at this and approve it. This is what you should have gotten last month.

Mr. Carter reviewed the memo in the packet.

Chair Bruneni said there was some confusion at our last meeting. We were brought the wrong information then. This is the correct information.

Mr. Carter said he will be making a recommendation, once the final is done, to spend \$200,000 for improvements to SWAN, which includes shelters over the picnic tables, preventive netting over the basketball courts, security cameras, electrical hook up at the multi purpose field and a restroom.

**MOTION** A motion was made by Commissioner Sidebottom, seconded by Commissioner Stodgel, to approve the Ordinance.

**VOTE** The motion passed unanimously by voice vote.

**B. A RESOLUTION SUPPORTING THE PARTY ON THE PITCH SOCCER TOURNAMENT TO BE HELD AT THE SANTA FE DOWNS MAY 21-22, 2016**

Mr. Carter said we need a motion to approve this or not. He reviewed the memo in the packet. The monies that are raised will be used toward future funding of the MRC Soccer Complex.

Commissioner Sidebottom said a portion will go to the Northern Scholarship Fund as well.

Mr. Carter said this event is for youth, co-ed and men's teams.

Chair Bruneni said the Downs is where they are holding the Soccer tournaments for the leagues.

Commissioner Sidebottom said it is used by the Rio Rapids Soccer League.

Mr. Carter said the Downs has been repurposed to an equestrian facility through early Summer and Soccer in Spring and Fall.

Mr. Carter said the property is owned by a pueblo but is leased.

Commissioner Stodgel asked who is putting this on.

Commissioner Sidebottom said it is a joint venture between the Adult Soccer League and Rio Rapids. He is involved with Rio Rapids and will recuse himself from the vote.

Chair Bruneni asked for a motion to support the event.

**MOTION** A motion was made by Commissioner Vasquez, seconded by Commissioner Wolf to support the event.

**VOTE** The motion passed by a vote of 6 yes and 1 recusal, Mr. Sidebottom.

## **7. PRESENTATION - MRC**

Mr. Carter introduced Alo Brodsky, head Gold Pro and Jennifer Romero, MRC Manager. Mr. Brodsky is a contractual employee and is doing a great job. Jennifer has been with the City for a long time and has worn lots of different hats. She is doing an outstanding job.

Ms. Romero passed out packets to the Commission, which are incorporated herewith into these minutes as Exhibit "1". She recognized Linda Zingle, with the Golf Course Advisory Committee which is a Subcommittee of PARC.

Ms. Romero reported that the MRC encompasses the golf course and a sports complex. We have a walking path and a BMX track that is not in use at this time but we do permit out the facility. We have 18 hole and 9 hole golf courses. Our Pro Shop is operated by New Mexico Golf. Alo was certified as a PGA Golf Pro in March which is a huge thing.

Ms. Romero said we are spread out over 1,200 acres. We also have an archery range that is operated by Archers de Santa Fe, a driving range and practice greens. Foot golf was introduced last year and we are looking to have our first foot golf tournament this year. It will be sponsored by Coca Cola and the proceeds will go to Soccer improvements. It is played on our 9 hole course and does not interfere with regular golf play. It is for all ages. Also we have the most affordable rates in Santa Fe and maybe in New Mexico. I invite all of you to come see us.

Mr. Brodsky said it is a pleasure to be here. He works for New Mexico Golf limited. They manage golf courses in Albuquerque and this course in Santa Fe. He is excited about the upcoming busy season. A lot of great tournaments are planned. The City Championship Tournament will be held over three courses. There is lots of interest. It is a nice tournament for the community and it brings the golf community together. Our Website has information about upcoming tournaments. We offer lots of different golf instruction including personal and private and several different kinds of clinics for beginners and experienced golfers. Come out and see us. It is a beautiful area. Grab a bite at our restaurant. It is a unique and amazing facility. Our Pro Shop is the largest golf retail shop between Albuquerque and Colorado Springs. Thank you for having me here today.

Mr. Brodsky left the meeting.

Ms. Romero said she is happy to give you a tour if you are in the area. Her office is next to the maintenance shop in a small brown building. She reviewed the contents of the MRC packet.

Chair Bruneni asked are we sharing information about the events at MRC with Tourism.

Ms. Romero said yes and we put them on the website.

Chair Bruneni said we under utilize our City facilities and do not promote them enough. If you would share your event with Cynthia at Tourism, that would be great. There will be more views across the City.

Mr. Carter said we are thinking of putting a coupon for free golf or something else on our MRC brochure and putting them in hotels and motels. They have to bring it to get the discount so we can track how well that is working. There are lots of people who do not know we have a golf course.

Chair Bruneni said and it is a championship golf course. We need to really promote it.

Mr. Carter said we are in Guest Life as well.

Ms. Romero said we are adding our events to the Tourism Santa Fe Events Calendar and we share them through constant contact. We do work with Cynthia on some things. She does work with us.

Chair Bruneni asked are you still pushing her for exposure.

Ms. Romero said yes. We also offer a consignor program every year. For every five referrals they give us they get a gift certificate to the restaurant or free rounds of golf. The Drury and La Posada are working with us on that now.

Ms. Romero went over the 2016 tournament calendar in the packet.

Ms. Romero said Brian Hodges is our Golf Course Superintendent. He is in Albuquerque this week getting a water certification so he could not be here. They are gearing up for aeration. We have seven maintenance employees, including our mechanic and our Superintendent. We have one temporary laborer and four administrative staff including myself. We are hoping to get in our seasonals. We are doing our best. It looks like we will get eleven seasonals. They will be with us until October 31<sup>st</sup>.

Ms. Romero went over the marketing packet and financial reports. If you have questions please contact me. The restaurant is operated by Frank and Liz Gallegos. The restaurant financial report is in the packet as well.

Mr. Carter said the restaurant is under contract with the City.

Chair Bruneni thanked Ms. Romero for her presentation.

Ms. Zingle said the City Golf Course Advisory Committee is now a subcommittee

of PARC. We have seven members who have mostly been on the Committee since 1990. We would like to know what you would like us to tackle or what concerns you would like us to address. We would like to support PARC in any way we can.

Mr. Carter said we will add reports from subcommittees to our agenda and include the Tree Board as well.

Chair Bruneni thanked Ms. Zngle.

The MRC staff left the meeting.

## **8. OLD BUSINESS**

### **A. DISCUSSION OF 2008 PARKS BOND REALLOCATION**

Mr. Carter said he wanted to give the Commission an update. There was an audit. The audit was done and there were some issues that the City has started to correct. He was notified that there is a bit over \$800,000 left over from that Park Bond. It became an issue for him to make a recommendations of how to use those funds. After discussions with the City Manager, Ike Pino and staff we made that recommendation. We reviewed all the projects and Ike Pino went and checked every park in the City. From that we completed the \$803,000 recommendation that will not be going to you and other Committees for approval.

Mr. Carter said our recommended projects are included in a chart that is incorporated into these minutes as Exhibit "2". We will be using \$600,000 for pedestrian bridges at the Ft. Marcy ball park. The center bridge there has flattened out. That bridge is the main bridge we want to replace. We are hoping that in May we will have this for you to approve.

### **B. COMMUNITY DAYS VOLUNTEERS**

Mr. Carter said Community Days is on May 14<sup>th</sup>, from 9-5 at the Plaza. If you would like to volunteer let him know. It is a Parks and Recreation event. May 23<sup>rd</sup> we will be having a bicycle safety event in conjunction with the Police Department at Ft. Marcy. It is for youth. We have received donations of bikes that we will be giving away. We also have donations of 1,000 bicycle helmets that they will give out. Let me now if you interested in that.

Commissioner Sidebottom asked have you reacted out to BTI for that.

Mr. Carter said he will double check that. We are starting to get people calling in and wanting to do sponsorships.

**C. PARKS AND RECREATION MASTER PLAN UPDATE**

Mr. Carter got three bids back and will be reviewing and scoring them this week. We may bring one or two in for an interview. The budget for this is \$50,000. All of them are over that. We will negotiate that.

**9. PUBLIC COMMENT**

None

**10. COMMISSIONER COMMENTS**

Commissioner Wolf said regarding year round restrooms in the Parks, she has looked into what different cities do and has found the top two things people want in a park are drinking fountains and restrooms. We would get a lot more use out of the parks if there was at least one Porta Potty at each park all year.

Mr. Carter said we don't own the Porta Pottys. It becomes expensive for us to do that. We bring them out around this time and pull them out in October. We have put in the Five Year CIP Plan to start installing permanent restrooms in all our parks that we can lock at night. That is our goal. The parks with ball fields have restrooms but they are only open when ball game is going on. We are looking at replacing one of the screened in areas at SWAN with a handicapped restroom.

Commissioner Wolf said she really likes the idea to have a restroom in every park.

**11. CONFIRM DATE, TIME AND LOCATION FOR THE NEXT MEETING  
(TUESDAY, MAY 17, 2016)**

The meeting information was confirmed.

**12. ADJOURNMENT**

**MOTION** A motion was made by Commissioner Vasquez, seconded by Commissioner Jackson, to adjourn the meeting.

**VOTE** The motion passed unanimously by voice vote.

The meeting adjourned at 6:35 pm.

---



---

Victoria Bruneni, Chair



---

Elizabeth Martin, Stenographer



205 Caja del Rio Road  
Santa Fe, NM 87507

**Links de Santa Fe**  
*Santa Fe's Course of Choice*

LinksdeSantaFe.com  
(505) 955-4470

## PARC MEETING 4-19-16 AGENDA

### TABLE OF CONTENTS:

- MRC FACT SHEET (DOUBLE SIDED)
- GREENS FEE RATE SHEET
- 2016 TOURNAMENT CALENDAR
- GOLF COURSE SUPERINTENDENT REPORT  
-(INFORMATION ONLY/NO ATTACHMENTS)
- MARKETING (DOUBLE SIDED)
- FINANCIALS
  - FY15/16 ROUNDS REVENUE SUMMARY REPORT (TO DATE)
  - MONTHLY JONAS REPORT (MARCH/DOUBLE SIDED)
  - PUNCH PASS PURCHASE REPORT (MARCH)
  - INFORMATION (NO ATTACHMENTS)
  - \*FY 15/16 BUDGETED EXPENSES: \$ 1,355,533
  - \*FY 15/16 BUDGETED REVENUE: \$1,278,461
  - RESTAURANT REPORT
- RESTAURANT SPECIALS (SEE ATTACHMENT)

Exhibit "1"



205 Caja del Rio Road  
Santa Fe, NM 87507

*Links de Santa Fe*  
*Santa Fe's Course of Choice*

LinksdeSantaFe.com  
(505) 955-4470

## THE MRC (MUNICIPAL RECREATION SPORTS COMPLEX)

THE CITY OF SANTA FE'S FINEST OUTDOOR, MULTI-PURPOSE RECREATIONAL COMPLEX

### MISSION

To provide a variety of quality, affordable recreational opportunities to Santa Fe, the city, county residents & visitors who visit the MRC.

### RECREATIONAL FACILITIES

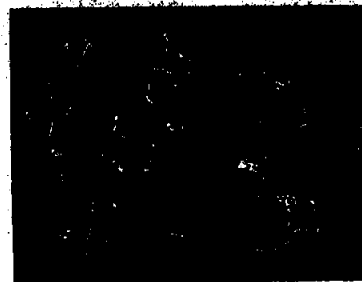
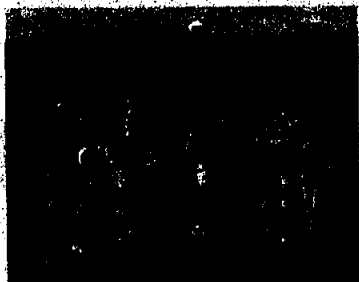
- 5 regulation adult soccer fields surrounded by a walking trail
- 1 large jungle gym on a sand-covered lot
- 6 softball fields (4 under lights)
- 2 Rugby fields
- 2 flag football fields
- 1 BMX track - offers a youth BMX park that includes on-site bleachers.  
The BMX track meets the requirements for hosting American Bicycle Association events.
- 1 Concession Stand (located at center of lighted softball fields)

### BACKGROUND

The Municipal Recreation Complex (MRC) is located on approximately 1,200 acres of land in northwestern Santa Fe County which were acquired pursuant to a joint Santa Fe city/county application for leased lands through the Bureau of Land Management Recreation and Public Purposes Act. The MRC is comprised of two distinct, yet integrated, recreational facilities: a multi-purpose sports complex which includes soccer, softball, hardball, and rugby fields, as well walking trails. The second component is an 18-hole championship golf course, a 9-hole executive course and ancillary amenities. In addition, the MRC hosts an archery range operated by the "Archers de Santa Fe".

### HISTORY

The project was initiated by City Council action in 1987 through a resolution endorsing a joint application to be filed with the Bureau of Land Management (BLM) for lease of federal lands. The application was filed in 1988 for recreational and public purpose use. Following the creation of a selection and feasibility task force in 1990, the city approved a series of contractual agreements to evaluate water issues, demographics and feasibility. After an analysis of available sites, the BLM site was approved as the preferred location and a lease agreement was executed with the BLM. In 1994, contracts were awarded for design and project administration. The first series of bonds was issued in 1996 to fund the first phase of the Municipal Recreation Complex construction. The construction contract was awarded in 1996 with initial construction completed in 1997. A second series of bonds was issued in 1998 to complete the project. The golf course and sports complex were opened in 1998. This was followed by the completion of additional amenities to the MRC.



205 Caja del Rio Road  
Santa Fe, NM-87507

*Links de Santa Fe*  
*Santa Fe's Course of Choice*

LinksdeSantaFe.com  
(505) 955-4470

**THE MRC (MUNICIPAL RECREATION SPORTS COMPLEX)**  
THE CITY OF SANTA FE'S FINEST OUTDOOR, MULTI-PURPOSE RECREATIONAL COMPLEX

**FACTS**

- IRRIGATED TURF
  - 90 ACRES AT GOLF COURSE
  - 45 ACRES AT MRC
- TOTAL ACREAGE: 1,200

**STAFFING**

- TOTAL EMPLOYEES: 12 (TO DATE)
- 7 CLASSIFIED MAINTENANCE CREW
- 1 TEMPORARY LABORER
- 4 ADMIN OF THAT (1 CLASSIFIED/3 TEMPS)
- AWAITING 12 SEASONAL/TEMPORARY EMPLOYEES TO BEGIN APRIL 2016-OCTOBER 31, 2016

**GOLF COURSE NAME/HISTORY**

Marty Sanchez Links de Santa Fe was given its name in memory of Marty Sanchez, for his love of the game and his devotion to the City of Santa Fe. Marty Sanchez was born on November 16, 1966 in Santa Fe, New Mexico. He attended St. Anne's Catholic School from first through eighth grade. During these years, his love for outdoors sports was apparent in the many hours he spent playing golf at the Santa Fe Country Club. He also achieved in football and basketball, winning 2nd place in the Punt Pass and Kick competition and was awarded most valuable player for basketball at St. Anne's School. During the summers he played in the Sun Country PGA Junior Championship Tournaments throughout the state. At the age of eight he won first place in the Pee-Wee Division of the Sun Country PGA Championship Tournament played at the Santa Fe Country Club.

Marty went on to Santa Fe High School where he was a member of the SFHS Golf Team and won many tournaments played throughout the state. Marty graduated from Santa Fe High School at the age of 17 in 1984, and was awarded a golf scholarship to New Mexico Junior College, where he played collegiate golf and won All-Conference honors. Two years later, he was awarded another golf scholarship to Western New Mexico University. There he won All-District and All-Conference honors. His goal was to become a professional golfer.

Marty's plan was to return to school and pursue his dream of becoming a professional golfer, when in the fall of 1991, he was diagnosed with a cancerous tumor found surrounding his vital organs. Following three months of intensive chemotherapy treatment, Marty succumbed to cancer on March 13, 1992.

Marty Sanchez Links de Santa Fe Golf  
Summary Report

ROUNDS of GOLF

Months	14/15 rds Actual	15/16 rds Actual	over/ under/ LFY
July	5,477	5,532	55
august	5,493	5,530	37
sept	4,360	4,145	(215)
oct	3,424	3,102	(322)
nov	1,567	1,554	(13)
dec	735	529	(206)
jan	351	314	(37)
feb	1,160	1,662	502
march	2,433	2,491	58
april	2,733		
may	3,850		
june	5,027		
Totals	36,610	24,858	(141)

# incl tourna

LFY14/15 36,610

LFY14/15 \$ 11,751

Golf rounds comparison



Months

GREEN FEES REVENUE

Months	14/15 revenue actual	15/16 revenue actual	over/ under/ LFY
July	\$ 93,821	\$ 94,340	\$ 518
august	\$ 95,977	\$ 93,750	\$ (2,227)
sept	\$ 74,715	\$ 69,928	\$ (4,787)
oct	\$ 56,503	\$ 52,574	\$ (3,929)
nov	\$ 28,734	\$ 26,522	\$ (2,212)
dec	\$ 12,161	\$ 9,415	\$ (2,747)
jan	\$ 6,245	\$ 5,539	\$ (706)
feb	\$ 20,252	\$ 29,151	\$ 8,899
march	\$ 44,410	\$ 48,789	\$ 4,379
april	\$ 46,448		
may	\$ 67,861		
june	\$ 79,184		
internal deposits	630	1,210	\$ 580
internal deposits	710	-	\$ -
internal deposits	-	-	\$ -
Totals	\$ 627,652	\$ 431,217	\$ (2,232)

LFY14/15 \$ 627,652

LFY14/15 \$ 196,435

GOLF CART REVENUE

Months	14/15 revenue actual	15/16 revenue actual	over/ under/ LFY
July	\$ 56,457	\$ 55,837	\$ 380
august	\$ 55,762	\$ 57,496	\$ 744
sept	\$ 45,906	\$ 43,630	\$ (2,276)
oct	\$ 35,096	\$ 30,861	\$ (4,235)
nov	\$ 13,562	\$ 13,691	\$ 129
dec	\$ 5,878	\$ 4,500	\$ (1,378)
jan	\$ 2,429	\$ 2,172	\$ (257)
feb	\$ 8,300	\$ 15,158	\$ 6,858
march	\$ 19,320	\$ 22,837	\$ 3,517
april	\$ 22,747	-	\$ -
may	\$ 35,756		
june	\$ 53,032		
Totals	\$ 354,235	\$ 246,182	\$ 3,482

LFY 14/15 \$ 354,235

LFY 14/15 \$ 108,053

PRO-SHOP REVENUE (gross)

Months	14/15 revenue actual	15/16 revenue actual	over/ under/ LFY
July	\$ 31,608	\$ 24,070	\$ (7,538)
august	\$ 32,274	\$ 27,705	\$ (4,569)
sept	\$ 24,481	\$ 23,388	\$ (1,093)
oct	\$ 21,645	\$ 14,371	\$ (7,274)
nov	\$ 16,333	\$ 13,944	\$ (2,389)
dec	\$ 9,772	\$ 8,542	\$ (1,230)
jan	\$ 5,703	\$ 5,387	\$ (316)
feb	\$ 7,988	\$ 15,894	\$ 7,906
march	\$ 14,786	\$ 17,275	\$ 2,489
april	\$ 18,518		
may	\$ 26,572		
june	\$ 22,978		
Totals	\$ 232,658	\$ 150,577	\$ (82,081)

LFY 13/14 \$ 232,658

LFY 13/14 \$ 82,081

DRIVING RANGE REVENUE

Months	14/15 revenue actual	15/16 revenue actual	over/ under/ LFY
July	\$ 10,286	\$ 12,809	\$ 2,523
august	\$ 10,314	\$ 13,554	\$ 3,240
sept	\$ 7,287	\$ 10,209	\$ 2,922
oct	\$ 6,616	\$ 6,840	\$ 224
nov	\$ 3,199	\$ 2,904	\$ (295)
dec	\$ 1,317	\$ 1,359	\$ 42
jan	\$ 1,282	\$ 1,094	\$ (188)
feb	\$ 2,539	\$ 4,318	\$ 1,779
march	\$ 4,912	\$ 4,907	\$ (5)
april	\$ 6,237		
may	\$ 7,748		
june	\$ 11,254		
Totals	\$ 72,991	\$ 57,993	\$ 10,247

LFY 14/15 \$ 72,991

LFY 14/15 \$ 14,998

GOLF TOURNAMENT REVENUE

Months	14/15 revenue actual	15/16 revenue actual	over/ under/ LFY
July	\$ 3,635	\$ 3,846	\$ 211
august	\$ 2,695	\$ 2,420	\$ (275)
sept	\$ 3,552	\$ 2,134	\$ (1,418)
oct	\$ 4,574	\$ 610	\$ (4,064)
nov	\$ -	\$ -	\$ -
dec	\$ 800	\$ -	\$ (800)
jan	\$ -	\$ -	\$ -
feb	\$ -	\$ -	\$ -
march	\$ -	\$ -	\$ -
april	\$ -		
may	\$ -		
june	\$ 12,587		
Totals	\$ 27,943	\$ 9,009	\$ (6,347)

LFY 14/15 \$ 27,943

LFY 14/15 \$ 18,934

projections based on last FY14/15

NOTE: March  
Total Greens Fee Revenue:  
Gross Fee = \$ \$46,465.00  
GRT total = \$ \$2,323.29  
Total Gross & GRT \$48,788.29  
Internal Deposits by our office:  
\*SNOW DAYS TOTAL FOR:

**Net Sales by Item**  
**Golf Shop for Feb 1/16 thru Feb 29/16**

**All Days**

No.	Sales	Item A	avg. Price #	of Sales	\$\$\$ Value
2	01X040	SR 18 hole 7-Day	15.21	446	6782.73
4	01X005	Afternoon 7-Day	21.9	188	4117.2
5	01X042	SR PM/9 7-Day	12.34	265	3271.17
6	01X039	SR 18 - Walk 7-Day	20.85	153	3190.11
7	01X006	Winter 7-Day Rate	21.9	115	2518.5
8	01X048	SR PM/9 Walk 7-Day	15.2	163	2478.4
9	01X014	Great-28 7-Day	15.24	94	1432.56
11	01X049	Great-28 SR Walk 7-Day	12.38	72	891.36
14	01X044	Great-28 SR 7-Day	8.57	79	677.03
17	01X001	18 hole 7-Day	27.24	5	136.18
22	01X018	Great-28 JR 7-Day	8.57	8	68.56
23	01X004	9 Hole JR 7-Day	9.52	7	66.64
24	01X003	18 hole JR 7-Day	13.33	4	53.32
25	01SG01	FootGolf Regular	15.24	3	45.72
27	01X078	Marshal Round (no credit)	14.29	3	42.87
28	01X081	Volunteer n/c Round w/ Cart	9.52	3	28.56
33	01X072	RAIN-CHECK ROUND	0	25	0
34	01X073	HIGH SCHOOL GOLF	0	1	0
35	01X074	FORE KIDS COMP ROUND	0	3	0
Total:				<b>1637</b>	<b>25800.91</b>

less 01X072 RAIN-CHECK ROUND

25
<b>SubTotal: 25</b>

20 01X013 4 Rnd Special Redemption  
 13 01X066 30-PUNCH PASS GREENS FEE  
 18 01X065 20-PUNCH PASS GREENS FEE  
 26 01X064 10-PUNCH PASS GREENS FEE  
 21 01X063 5-PUNCH PASS GREENS FEE

4
35
6
2
3
<b>SubTotal: 50</b>

15 03X004 30-ROUND PP PURCHASE 604.76  
 12 03X003 20-ROUND PP PURCHASE 809.52  
 16 03X002 10-ROUND PP PURCHASE 428.58  
 19 03X001 5-ROUND PP PURCHASE 119.05

<b>SubTotal: 1961.91</b>
--------------------------

Rounds & Rev	<b>1662</b>	<b>27762.82</b>
GRT		<b>1388.14</b>

**29150.96**

**NOTE: TOTAL SNOW DAYS = 9**

COMP ROUNDS		
29	01X068	MARSHAL ROUND
30	01X069	CITY VOLUNTEER ROUND
31	01X067	NMGL EMPLOYEE ROUNDS
32	01X071	PGA COMP ROUND
36	01X075	RESTAURANT ROUND
		<b>119</b>

**Net Sales by Item**  
**Golf Shop for Mar 1/16 thru Mar 31/16**  
**All Days**

No.	Sales	Item A	vg. Price	# of Sales	\$\$\$ Value
2	01X040	SR 18 hole 7-Day	16.99	626	10638.3
4	01X039	SR 18 - Walk 7-Day	21.76	280	6093.78
5	01X005	Afternoon 7-Day	21.9	270	5913
6	01X001	18 hole 7-Day	28.37	205	5816.13
7	01X042	SR PM/9 7-Day	14.28	331	4727.12
8	01X048	SR PM/9 Walk 7-Day	17.14	189	3239.46
9	01X014	Great-28 7-Day	15.24	202	3078.48
11	01X049	Great-28 SR Walk 7-Day	12.38	107	1324.66
12	01X044	Great-28 SR 7-Day	8.57	135	1156.95
17	01X003	18 hole JR 7-Day	13.33	15	199.95
19	01X011	9-hole 7-Day	20.95	8	167.59
21	01X018	Great-28 JR 7-Day	8.57	15	128.55
22	01X081	Volunteer n/c Round w/ Cart	9.52	13	123.76
23	01X004	9 Hole JR 7-Day	9.52	7	66.64
24	01SG02	FootGolf Junior	8.57	7	59.99
26	01X006	Winter 7-Day Rate	21.9	2	43.8
27	01SG01	FootGolf Regular	15.24	2	30.48
28	01X078	Marshal Round (no credit)	14.29	1	14.29
36	01X072	RAIN-CHECK ROUND	0	42	0
37	01X073	HIGH SCHOOL GOLF	0	4	0
38	01X074	FORE KIDS COMP ROUND	0	3	0

Total: **2464 42822.93**

less 01X072 RAIN-CHECK ROUND

0 42 0

Sub Total: **42**

13 01X066 30-PUNCH PASS GREENS FEE  
 16 01X065 20-PUNCH PASS GREENS FEE  
 18 01X064 10-PUNCH PASS GREENS FEE  
 25 01X063 5-PUNCH PASS GREENS FEE

50  
10  
7  
2

Sub Total: **69**

10 03X004 30-ROUND PP PURCHASE  
 14 03X003 20-ROUND PP PURCHASE  
 15 03X002 10-ROUND PP PURCHASE  
 20 03X001 5-ROUND PP PURCHASE

2400  
876.2  
238.1  
128.57

Sub Total: **3642.87**

Rounds & Rev **2491 46465.8**  
 GRT **2323.29**

**48789.09**

**COMP ROUNDS**

30	01X068	MARSHAL ROUND	152
31	01X069	CITY VOLUNTEER ROUND	24
32	01X002	FREE ROUND (GHIN/ASSOC. Spec	14
33	01X067	NMGL EMPLOYEE ROUNDS	7
34	01X070	CITY OF SF TRADE COMP	1
35	01X071	PGA COMP ROUND	13
39	01X075	RESTAURANT ROUND	5
40	01X076	CITY GOLF CSE EMP ROUND	8

**Punch Pass Purchase  
Comparison**

	FY 13/14		FY 14/15		FY 15/16	
5-Round PP Purchase	Qty. Sold	\$ Value	Qty. Sold	\$ Value	Qty. Sold	\$ Value
July			1	119.05	1	119.05
August	1	115	1	119.05	1	119.05
September			1	119.05		
October	1	115	1	119.05	1	119.05
November						
December			1	119.05	3	357.15
January			3	357.15		
February					1	119.05
March			2	238.1	1	128.57
April			3	327.15		
May	1	119.05	2	238.1		
June	2	238.1				

10-Round PP Purchase						
July	1	220	1	214.29	3	642.87
August			1	214.29	4	857.16
September					2	428.58
October	1	220	1	214.29		
November	1	220				
December					2	428.58
January					1	214.29
February			1	214.29	2	428.58
March	1	214.29	3	642.87	1	238.1
April	4	857.16	3	642.87		
May			2	428.58		
June	1	214.29	1	380.95		

20-Round PP Purchase						
July					2	809.52
August	2	840	2	809.52		
September						
October			1	404.76		
November					1	404.76
December						
January						
February					2	809.52
March					2	876.2
April			1	404.76		
May						
June		809.52				

30-Round PP Purchase						
July	3	1800	3	1814.28	2	1209.52
August	1	600	2	1209.52	2	1209.52
September	1	600	1	604.76	1	604.76
October			1	604.76	1	604.76
November	3	1800	2	1209.52	1	604.76
December						
January						
February					1	604.76
March	2	1209.52	2	1209.52	4	2400
April	3	1814.28				
May	2	1209.52	1	604.76		
June	2	1209.52	1	604.76		
<b>TOTAL ALL CATEGORIES</b>	<b>33</b>	<b>\$14,425.25</b>	<b>45</b>	<b>\$14,189.10</b>	<b>42</b>	<b>\$14,338.16</b>

TOTAL PPP SALES FOR 15/16		
BY MONTH:	# SOLD	\$ TOTAL
July	8	\$2,781
August	7	\$2,186
September	3	\$1,033
October	2	\$724
November	2	\$1,010
December	5	\$786
January	1	\$214
February	6	\$1,962
March*	8	\$3,643
April	0	\$0
May	0	\$0
June	0	\$0
<b>TOTAL</b>	<b>42</b>	<b>\$14,338</b>

\*SCREEN FEE RATE INCREASE WENT INTO EFFECT MARCH 1ST

Restaurant Monthly Report

	2015	Jan	Feb	Mar	Apr	May	Jun	Jul	Aug	Sep	Oct	Nov	Dec	Total
Total Restaurant Sales		\$3,825.18	\$7,923.00	\$16,076.06	\$16,738.35	\$28,605.40	\$36,741.84	\$23,384.09	\$39,594.59	\$28,075.23	\$21,540.45	\$8,495.72	\$3,539.84	\$234,539.75
Alcoholic Beverages		\$589.75	\$1,952.50	\$5,076.00	\$5,531.75	\$10,838.25	\$14,309.75	\$8,115.75	\$14,235.24	\$9,719.00	\$7,069.00	\$2,315.75	\$907.00	\$80,659.74
Food		\$3,235.43	\$5,970.50	\$11,000.06	\$11,206.60	\$17,767.15	\$22,432.09	\$15,268.34	\$25,359.35	\$18,356.23	\$14,471.45	\$6,179.97	\$2,632.84	\$153,880.01
Total Restaurant Sales	2016	\$2,082.85	\$10,643.68	\$17,995.12	\$0.00	\$0.00	\$0.00	\$0.00	\$0.00	\$0.00	\$0.00	\$0.00	\$0.00	\$30,721.65
Alcoholic Beverages		\$392.50	\$3,786.50	\$6,409.73	\$0.00	\$0.00	\$0.00	\$0.00	\$0.00	\$0.00	\$0.00	\$0.00	\$0.00	\$10,588.73
Food		\$1,690.35	\$6,857.18	\$11,585.39	\$0.00	\$0.00	\$0.00	\$0.00	\$0.00	\$0.00	\$0.00	\$0.00	\$0.00	\$20,132.92

Total Restaurant Sales to Date	ALCOHOL	FOOD	TOTAL
JANUARY-DECEMBER 2015	\$80,659.74	\$153,880.01	\$234,539.75
JANUARY-DECEMBER 2016	\$10,588.73	\$20,132.92	\$30,721.65
DIFFERENCE	-\$70,071.01	-\$133,747.09	-\$203,818.10



205 Caja del Rio Road  
Off Highway 599

*Links de Santa Fe*

*Santa Fe's Course of Choice*

LinksdeSantaFe.com  
(505) 955-4400

## GREENS FEE RATES

7 DAYS A WEEK

Individual times may be reserved up to seven days in advance.

### CHAMPIONSHIP 18-WALKING RATES

18 HOLE WALKING	\$30
9 HOLE WALKING	\$21
TWILIGHT WALKING	\$23
JUNIOR 18 HOLE WALKING	\$14
JUNIOR 9 HOLE WALKING	\$10
JUNIOR TWILIGHT WALKING	\$10
SENIOR 18 HOLE WALKING	\$23
SENIOR 9 HOLE WALKING	\$18
SENIOR 9 HOLE TWILIGHT	\$18

### CHAMPIONSHIP 18-W/GOLF CART RATES

18 HOLE W/ CART	\$47
9 HOLE W/CART	\$31
TWILIGHT W/CART	\$33
SENIOR 18 HOLE W/CART	\$35
SENIOR 9 HOLE W/CART	\$25
SENIOR TWILIGHT W/CART	\$25

\*JUNIORS (17 & UNDER)

\*SENIOR (60+)

\*TWILIGHT TIMES CHANGE PER SEASON

### PAR 3 "GREAT 28"-WALKING RATES

9 HOLE WALKING	\$16
JUNIOR 9 HOLE WALKING	\$9
SENIOR 9 HOLE WALKING	\$13

### PAR 3 "GREAT 28"-W/GOLF CART RATES

9 HOLE W/CART	\$26
SENIOR 9 HOLE W/CART	\$19
REPLAY FEE CART FEE	\$10

## RENTAL FEES

7 DAYS A WEEK

### GOLF CART-RENTAL FEES

18 HOLE GOLF CART RENTAL	\$17
9 HOLE GOLF CART RENTAL	\$10
TWILIGHT GOLF CART RENTAL	\$10

### PULL CART-RENTAL FEES

18 HOLE PULL CART RENTAL	\$5
9 HOLE PULL CART RENTAL	\$3
SENIOR 9 & 18 HOLE RENTAL	\$2

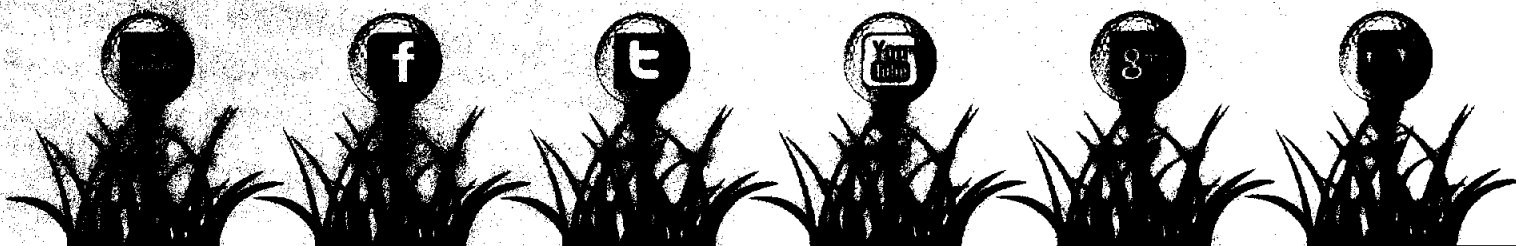
### GOLF CLUBS-RENTAL FEES

18 HOLE GOLF CLUB RENTAL	\$20
9 HOLE GOLF CLUB RENTAL	\$10
YOUTH 18 HOLE (AGES 13-17)	\$15
YOUTH 9 HOLE (AGES 13-17)	\$8
YOUTH (AGES 4-12)	FREE

### GOLF BALL BUCKET-RENTAL FEES

SMALL BUCKET	\$4
MEDIUM BUCKET	\$6
LARGE BUCKET	\$9

As a family, friendly golf course, we strive to always offer the most competitive, low rates that encompass that of a world-class facility.





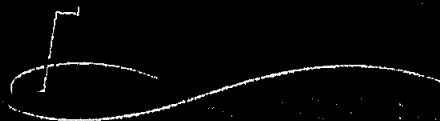
## 2016 Tournament Schedule

Date	Event	Approx. Size of field	Start Time/course
19-Mar	MGA 2-Man Total Score	30-50	10am Tee Times
16-Apr	MGA Nassau	30-50	9am Tee Times
07-May	MGA 1st Round Matchplay	32-64	8am Tee Times
14-May	Birdies for Bel Canto	80-100	10am Shotgun
18-May	Senior Olympics	30-60	8:30am Tee Times
20-May	World Youth Day Scramble	50-80	9am shotgun
21-May	LLGA Meet & Greet	15-30	9am shotgun
21-May	MGA Individual Stroke Play	30-50	8am Tee Times
27-May	Isaac Jaramillo Memorial/Boys & Girl's Club Scramble	80-128	9am shotgun
03-Jun	Santa Maria de la Paz	100-128	9am shotgun
04-Jun	MGA 2nd Round Matchplay	32-64	8am Tee Times
10-Jun	Nate Blaser Memorial	100-128	9am shotgun
11-Jun	Santo Nino Scramble	100-128	9am shotgun
16-Jun	LLGA Invitational	60-80	9am shotgun
17-Jun	SER Golf Classic	100-128	9am shotgun
18-Jun	MGA Stableford	30-50	8am Tee Times
23-Jun	SFAHBA Scramble	128+	9am shotgun
25-Jun	2016 Footgolf Tournament	30-50	3pm Shotgun/G-28
25-Jun	Native American Youth Golf Tournament	30-50	9am Tee Times
26-Jun	Native American Youth Golf Tournament	30-50	9am Tee Times
27-Jun	Cocoa Maxwell	128+	9am shotgun
28-Jun	Sun Country Junior Tour	50-80	9am shotgun
04-Jul	4th of July American Scramble*	100-128	9am Shotgun
09-Jul	MGA Whole Enchilada	30-50	8am Tee Times/18hole & G-28
10-Jul	LLGA Four Club	20-30	TBD
23-Jul	Final Round City Championship	60-80	9am shotgun
13-Aug/14-Aug	LLGA Club Championship	30-40	Sat. ttzm @ 8am/Sun. 9am shotgun
26-Aug	FORE KIDS	100-128	9am shotgun
27-Aug/28-Aug	MGA Club Championship	40-50	Sat. ttzm @ 8am/Sun. 9am shotgun
13-Sep	North Eastern Senior Golf Association	70-90	9am shotgun
23-Sep	Rotary Golf Tournament	100-128	9am shotgun
24-Sep	MGA Trifecta	30-50	9am Tee Times
01-Oct	LLGA Equinox Tournament	20-40	TBD
07-Oct	SFAR Richard Jay Scramble	100-128	TBD
08-Oct	Beat The Pro	30-60	10am Shotgun
22-Oct	MGA Individual Stroke Play	30-50	10am Tee Times
27-Oct	LLGA Halloween Scramble	20-30	TBD
19-Nov	MGA Four Club	30-50	10am Tee Times

\*July 4th Tournament needs to be planned. It would be a tournament hosted by Marty (proceeds could go towards bunkers?)



205 Caja del Rio Road  
Santa Fe, NM 87507



**Links de Santa Fe**  
Santa Fe's Course of Choice

LinksdeSantaFe.com  
(505) 955-4470

**PARC Meeting-Tuesday, April 19, 2016**  
**Marty Sanchez Links de Santa Fe**  
**Marketing & Public Relations Update**

**Website Statistics for LinksdeSantaFe.com**

Jan-Dec 2014 Performance Metrics	Jan-Dec 2015 Performance Metrics	Overall
-18,833 Total Visits	-23,889 Total Visits	+5,056
-13,122 Website Users	-16,907 Website Users	+3,785
-65,881 Total Page views	-70,518 Total Page views	+4,637
-32% New Visits	-30.6% New Visits	
-68% Returning Visits	-69.4% Returning Visits	

**Social Media Statistics for Facebook & Twitter**

**Facebook**

Jan-Dec 2014	Jan-Dec 2015	Overall
-353 Total Likes	-568 Total Likes	+68

**Twitter**

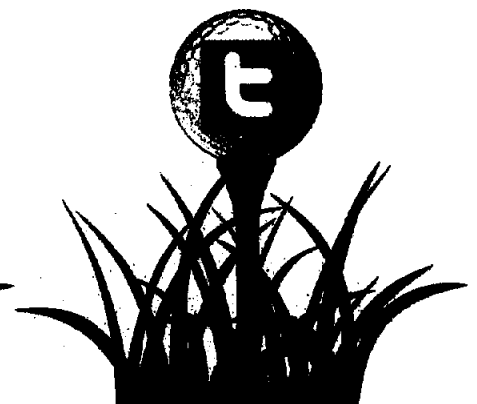
Jan-Dec 2014	Jan-Dec 2015	Overall
-165 Total Likes	-518 Total Likes	+619 Total Likes



Check us out  
**ONLINE**



Like us on  
**FACEBOOK**



Follow us on  
**TWITTER**



205 Caja del Rio Road  
Santa Fe, NM 87507

**Links de Santa Fe**  
Santa Fe's Course of Choice

LinksdeSantaFe.com  
(505) 955-4470

**PARC Meeting-Tuesday, April 19, 2016**  
**Marty Sanchez Links de Santa Fe**  
**Marketing & Public Relations Update**



**Youth Summer**

Off Highway 599

**Half Day Golf Camp**  
9 a.m. to 11:30 a.m.

Boys & Girls  
All Skill Levels  
Welcome  
Ages 6-12

\$75 per child

**Full Day Combo Camp**  
7:30 a.m. to 5:30 p.m.

\$125 per child

Half-day Camp Call  
Full Day Combo Call

Session w/ Sessions  
June 6-20  
June 27-27  
June 27-27  
June 27-27  
June 27-27  
June 27-27

Fundamentals  
Rules & Etiquette  
Putting & Chipping  
Full Swing  
How to read a putting green  
On course practice & play

Presentation for Parents  
Free lunch on the last day  
Free camp shirt

**Put The Best To The Test**

<b>TaylorMade</b> 10 a.m. to 2 p.m.	<b>NIKE GOLF</b> 12 p.m. to 4 p.m.
<b>PING</b> 10 a.m. to 2 p.m.	<b>Callaway</b> 11 a.m. to 3 p.m.

Test drive the latest clubs from the best name brands  
Receive a custom fitting from manufacturer experts  
Call 955-4400 to reserve your fitting; Drop-in's welcome

**SPEND LESS, SAVE MORE**  
**VOLUME DISCOUNT CARDS**

<b>5</b> Round Prepaid Card \$125 \$35 Total Savings	<b>10</b> Round Prepaid Card \$225 \$45 Total Savings	<b>20</b> Round Prepaid Card \$425 \$114 Total Savings
<b>30</b> Round Prepaid Card <b>BEST VALUE!</b> \$635 \$330 Total Savings		

Valid on the Championship 18 Hole Course Only



205 Caja del Rio Road  
Santa Fe, NM 87507

*Links de Santa Fe*  
Santa Fe's Course of Choice

LinksdeSantaFe.com  
(505) 955-4470

## PARC Meeting-Tuesday, April 19, 2016

### Marty Sanchez Links de Santa Fe Marketing & Public Relations Update

**18th Annual FIRESTORM GOLF TOURNAMENT**

11:00 AM Tee Time  
August 2nd, 2016  
Links de Santa Fe

All proceeds raised will be used in the form of grants to offer recreational involvement for our youth who could not otherwise afford to take advantage of programs at Links de Santa Fe. Call the pro shop for more information.

**LONGEST DRIVE CHALLENGE**

**Links de Santa Fe Championship**

5 Courses, 36 Championship Holes, 360 Degree Panoramic Views,  
1 City Champion, 1 Unbelievable Golf Experience!

**Championship Flight**  
(medal play, gross, no handicaps)

**Men's Flight**  
(medal play, gross, no handicaps)  
1st to 10th place / 1st to 10th place

**Ladies Flight**  
(medal play, gross, no handicaps)  
1st to 10th place / 1st to 10th place

**Junior Flight**  
(medal play, gross, no handicaps)  
1st to 10th place / 1st to 10th place

**Scoring**  
Medal play ONLY  
Tiebreakers by total strokes /  
If still tied, then by gross score /  
If still tied, then by net score /  
If still tied, then by birdie /  
If still tied, then by eagle

**1 July 21st** **2 July 22nd** **3 July 23rd**

12:30 pm  
12:30 pm  
9:00 am

Links de Santa Fe  
Santa Fe's Course of Choice  
205 Caja del Rio Road  
Santa Fe, NM 87507  
(505) 955-4470

**Are you ready for a fun & exciting Spring Break?**

**Spring Break Golf Camp**

March 28th - April 2nd

**Half Day Golf Camp**  
10 am to Noon

**Boys & Girls All Skill Levels Welcome**  
Ages 7-12

**Call the pro shop**  
505-955-4470

**Off Highway 99**

**Fundamentals**  
Rules & Etiquette  
Putting & Chipping  
Ball striking  
How to read a green  
On course practice & play

**Presented by**  
Links de Santa Fe  
Pro Shop

Children with disabilities or be-  
cause of other reasons are invited to the  
camp. Call the pro shop for more  
information. A fee of \$100 is required  
for each child.

Proceeds to benefit the MRC Soccer Valley Improvements

**1st Annual Coca-Cola FOOTGOLF Tournament**

Saturday, June 25, 2016

**Raffle Food Prizes**

**3:30 pm shotgun start**

**Adults \$20 Youth \$10**

**All Ages Welcome** **FTG** **No Experience Necessary**

4-5 Some Groups | Individual & Team Discount | Bring Your Own Ball  
No Cleated Shoes Allowed | Deadline to Register June 23rd  
For more information, call the Pro Shop at 955-4470  
Visit LinksdeSantaFe.com



205 Caja del Rio Road  
Santa Fe, NM 87507

*Links de Santa Fe*  
Santa Fe's Course of Choice

LinksdeSantaFe.com  
(505) 955-4470


**PARC Meeting-Tuesday, April 19, 2016**  
**Marty Sanchez Links de Santa Fe**  
**Marketing & Public Relations Update**

*Hit The Links  
Santa Fe Style*



Marty Sanchez  
**Links de Santa Fe**  
Santa Fe's Course of Choice

*Monday  
**GOLF**  
Madness*




At Marty Sanchez Links de Santa Fe, we understand how important it is to be informed on special savings. As a family, Monday's evening, we strive to always offer the most competitive, low rates that encompass that of a world class facility.

**\$25.00**

- Monday's only
- Afternoon rate starts 1 hour early
- Includes fixed meal from The Links Bar & Grill
- Golf Cart NOT Included
- Valid on date of purchase only

Contact the Pro Shop at 955-4400  
LinksdeSantaFe.com

**Volume Discount  
Golf Card**



Get Connected & Stay Informed

☐ ☐ ☐ ☐ ☐ ☐



205 Caja del Rio Road  
Santa Fe, NM 87507

*Links de Santa Fe*  
Santa Fe's Course of Choice

LinksdeSantaFe.com  
(505) 955-4470

**PARC Meeting-Tuesday, April 19, 2016**

**Marty Sanchez Links de Santa Fe  
Marketing & Public Relations Update**

**GET GOLF READY**  
Discover the Game & Love it for Life

**\$25**  
per person

Learn the basics of golf in a fun and interactive way. This introductory session is designed for beginners and includes a lesson from a professional instructor. You'll learn the fundamentals of golf, including grip, stance, and swing mechanics. The session is suitable for all ages and skill levels.

**Get into the Swing**  
Join us for a fun and informative day of golf instruction. We'll cover everything from the basics of golf to advanced techniques. You'll have the opportunity to practice your swing on the range and receive feedback from our experienced instructors.

Reserve your spot today! Call 955-4400 or visit us online at LinksdeSantaFe.com.

**Introductory Rate for Links de Santa Fe Golf Association Members**

**Perks Include:**

- **1 FREE Round of Golf**
- **25% off 1x Green Fee**
- **25% off 1x Cart Rate**
- **GHIN Handicap Service Fee**
- **Annual Membership Dues**

**Join Today!**  
The Men's & Ladies golf associations are a recreation golf league for amateur players who enjoy sharing their love of the sport. Each association sponsors twice weekly play days, clinics, meet and greets, tournaments, youth programs, and a variety of informal events. Registration must be completed on or before the deadline to receive new member discount.

For more information, contact the pro shop at 955-4400

**Some Drives Are Just Worth Making**

Marty Sanchez  
**Links de Santa Fe**  
Santa Fe's Course of Choice



205 Caja del Rio Road  
Santa Fe, NM 87507

*Links de Santa Fe*  
Santa Fe's Course of Choice

LinksdeSantaFe.com  
(505) 955-4470

**PARC Meeting-Tuesday, April 19, 2016**  
**Marty Sanchez Links de Santa Fe**  
**Marketing & Public Relations Update**



*Some Drives are Just Worth Making*

Marty Sanchez  
**Links de Santa Fe**  
Santa Fe's Course of Choice

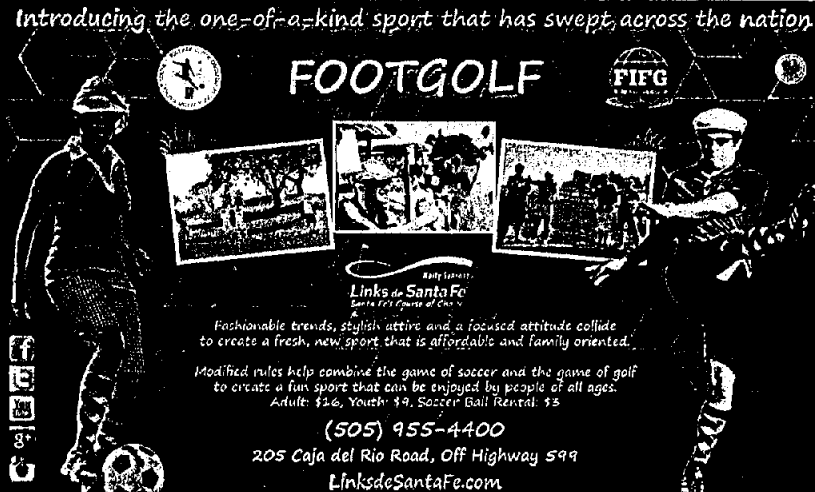
*Some Drives Are Just Worth Making*

Marty Sanchez  
**Links de Santa Fe**



Introducing the one-of-a-kind sport that has swept across the nation

**FOOTGOLF** **FIFG**



Fashionable trends, stylish attire and a focused attitude collide to create a fresh, new sport that is affordable and family oriented.

Modified rules help combine the game of soccer and the game of golf to create a fun sport that can be enjoyed by people of all ages.  
Adult: \$16, Youth: \$9, Soccer Ball Rental: \$5

(505) 955-4400  
205 Caja del Rio Road, Off Highway 599  
LinksdeSantaFe.com

*Some Drives are Just Worth Making*

Featured on Golf Life and Sports Television Networks



RESERVE YOUR SEAT NOW  
Million Entertainment  
(505) 955-4400  
**LinksdeSantaFe.com**  
205 Caja del Rio Road, Off Highway 599, Santa Fe, NM

# City of Santa Fe, New Mexico

## LEGISLATIVE SUMMARY

Bill No. 2016-16

### Authorize Bond Reallocation

---

**SPONSOR(S):** Councilors Maestas, Trujillo and Dominguez

**SUMMARY:** The proposed bill would authorize the reallocation of 2012 GO bonds from their designated parks to other needs around the City. Funds would be taken from parks in which priorities have changed, and reallocated to other projects with high maintenance needs.

**PREPARED BY:** Jesse Guillen, Legislative Liaison

**FISCAL IMPACT:** No

**DATE:** March 22, 2016

**ATTACHMENTS:** Memo  
Spreadsheet  
Bill  
FIR

Exhibit "a"

**ACTION SHEET  
ITEM FROM THE  
PUBLIC WORKS/CIP AND LAND USE COMMITTEE MEETING  
OF  
MONDAY, MARCH 28, 2016**

**ITEM 21**

REQUEST FOR APPROVAL OF AN ORDINANCE AUTHORIZING AN AMENDMENT TO THE 2012 GENERAL OBLIGATION (GO) BOND PARKS AND TRAILS IMPLEMENTATION PLAN TO REALLOCATE \$311,354 CURRENTLY DESIGNATED FOR VARIOUS CITY PARK IMPROVEMENTS TO OTHER CITY PARKS WITH HIGH MAINTENANCE NEEDS (COUNCILORS MAESTAS, TRUJILLO AND DOMINGUEZ) (ROBERT CARTER)

**PUBLIC WORKS COMMITTEE ACTION:** Approved on Consent

**FUNDING SOURCE:**

**SPECIAL CONDITIONS / AMENDMENTS / STAFF FOLLOW UP:**

VOTE	FOR	AGAINST	ABSTAIN
CHAIRPERSON IVES			
COUNCILOR MAESTAS	X		
COUNCILOR RIVERA	X		
COUNCILOR TRUJILLO	X		
COUNCILOR VILLARREAL	X		

# City of Santa Fe, New Mexico

## memo

**TO:** Public Works Committee (March 7, 2016)  
Finance Committee (March 14, 2016)  
City Council

**FROM:** Rob Carter, Parks and Recreation Department Director

**DATE:** February 15, 2016

**RE:** 2012 Parks Bond Recommendations

### SUMMARY:

When the 2012 Parks Bond was approved for \$8,000,000, a plan was submitted that included all the projects that were to be completed from this funding for Parks Improvements and Additional Parks. Some of these projects have been completed as of this date, but others were in progress or waiting to be started in May 2015. Projects were put on hold due to the removal of local crews from providing some of the improvements.

### ISSUE:

After research by the Parks and Recreation Department staff and with input from PARC, there appeared to have been some projects that could be withdrawn from the funding due to a number of different reasons (ENN's, Historical Review, not enough funding, no interest in going further on specific project), thereby utilizing the funding for more pressing issues that were planned on the 2012 Parks Bond. The Parks that were identified to remove from the funding list are:

Cross of the Martyrs	\$ 15,035.44
Thomas Macione	\$ 8,063.79
GCCC Park	\$ 48,573.45
Escondido	\$ 13,976.26
Monica Lucero	\$ 43,660.14
Las Acequias Phase IV	<u>\$155,610.95</u>
Total:	<b>\$284,926.03</b>

Cross of the Martyrs- Erosion Control: due to historical regulations, we are unable to do any digging or construction within this park, so as not to disturb historical relics. No alternatives were possible for this project.

Thomas Macione- Drinking Fountain: it was decided by Parks Division staff and PARC members that a drinking fountain was no longer needed for this park.

GCCC Park- Prairie Dog Control Fence: this was to be buried in the ground to prevent Prairie Dogs from building tunnels in the park. This problem is no longer a problem and can be much more expensive than originally estimated.

Escondido- Improve existing drainage and add park furniture: after speaking to neighbors and inspecting the area, it was felt that this small pocket park had a decent drainage system and that the park was not highly used except after dark. The plan would be to continue to mow the area and to remove old concrete picnic tables.

Monica Lucero- Install large shade structure: it has been determined that there is already a medium shade structure in this park and there is no need for an additional one.

Las Acequias Phase IV- Develop a large open turf area: it was felt through ENN that the community did not want an additional park area, but to have improvements done to the existing park.

(attached please find a spreadsheet for the present bond allocation and balances)  
The difference on the non-closed items (spreadsheet) is due to salary expenses paid to the Project Administrator for ENN's, advertising, and salary/benefits.

A portion of this reallocation would be transferred or added to the existing budgets for the following parks for completion of planned improvements:

**Patrick Smith Park-** Replace irrigation, level, grade, and reseed turf areas, and install security cameras- \$79,854.00

**Las Acequias Park-** Improve/replace pathway, add solar lighting, add playground equipment, and add 2- picnic tables- \$155,611.00

**Monica Lucero Park-** Improve irrigation system- \$11,000.00

**La Resolana Park-** Arroyo stabilization- \$120,350.00

**Herb Martinez Park-** Resurface basketball courts- \$5,000.00

**Reflection of Change in Scope of Work with Reallocation**

<b>Patrick Smith Park-</b>	Remaining Budget:	\$ 62,919.00
	Reallocation:	<u>\$ 16,935.00</u>
	New Total:	\$ 79,854.00
<b>Las Acequias Park-</b>	Budget for Phase IV:	\$155,610.95
	Reallocation to Phase III:	<u>\$155,610.95</u>
	New Total for Phase IV:	\$0
<b>Monica Lucero Park-</b>	Budget:	\$ 54,660.14
	Reallocation:	<u>\$ 11,000.00</u>
	Reallocate to other Parks:	\$ 43,660.14
<b>La Resolana Park:</b>	Budget:	\$ 91,584.42
	Reallocation:	<u>\$ 28,765.58</u>
	New Total:	\$120,350.00
<b>Herb Martinez Park:</b>	Budget:	\$ 0
	Reallocation:	<u>\$ 5,000.00</u>
	New Total:	\$ 5,000.00

All other projects planned for the 2012 Park Bond that would continue as planned would include:

Water History Park  
Salvador Perez Park  
Dancing Ground Phase II  
GCCC Skatepark  
Arroya Sonrisa Park

There still could be some money left over from the Parks bonds once all construction is completed. Once the final amount is calculated, I would plan to bring recommendations for additional park improvements from the remaining amount, back to the City Council for approval.

**RECOMMENDED ACTION:**

Approve as presented.

2012 Parks Bond	Bond Allocation	Over Budget	Under	Remaining Budget	Closed Projects
CCCC Park	\$54,605.00			\$48,573.45	
Adam Armijo	\$19,589.00	-\$7,141.30			closed
Cross of the Marytrs Park	\$17,474.00			\$15,035.44	
W. De Vargas Park	\$136,513.00		\$266.02	\$266.02	closed
Franklin Miles Park	\$163,815.00	-\$427.19			closed
Herb Martinez Park	\$32,763.00	-\$950.97			closed
John F. Griego	\$111,394.00		\$3,897.20	\$3,897.20	closed
Las Acequias	\$163,815.00			\$155,610.95	
Los Milagros	\$80,410.00		\$4,506.83	\$4,506.83	closed
Monica Lucero Park	\$60,066.00			\$54,660.14	
Patrick Smith Park	\$160,539.00			\$62,919.31	
Ragle Park	\$611,576.00		\$1,467.14	\$1,467.14	closed
Thomas Macaione Park	\$8,737.00			\$8,063.79	
Trail Head Cameras	\$19,658.00	-\$4,622.93			closed
Colonial Prisma	\$273,025.00		\$203.46	\$203.46	closed
Los Hermanos Rodriguez	\$21,842.00		\$2,607.36	\$2,607.36	closed
La Resolana	\$98,288.00			\$91,584.42	
Rancho Siringo 1	\$163,815.00	-\$1,098.07			closed
Escondido Park	\$21,842.00			\$13,976.26	
Arroyo Sonrisa	\$19,658.00			\$17,709.81	
Over Budget				-\$14,240.46	
Total	\$2,239,424.00	-\$14,240.46		\$466,841.12	

1                                   **CITY OF SANTA FE, NEW MEXICO**

2                                   **BILL NO. 2016-16**

3                                   **INTRODUCED BY:**

4  
5                                   Councilor Joseph M. Maestas

6                                   Councilor Ronald S. Trujillo

7                                   Councilor Carmichael A. Dominguez

8  
9  
10                                  **AN ORDINANCE**

11   **AUTHORIZING AN AMENDMENT TO THE 2012 GENERAL OBLIGATION (GO) BOND**  
12   **PARKS AND TRAILS IMPLEMENTATION PLAN TO REALLOCATE \$311,354**  
13   **CURRENTLY DESIGNATED FOR VARIOUS CITY PARK IMPROVEMENTS TO**  
14   **OTHER CITY PARKS WITH HIGH MAINTENANCE NEEDS.**

15  
16   **BE IT ORDAINED BY THE GOVERNING BODY OF THE CITY OF SANTA FE:**

17                   **Section 1.     Authority**

18           A.     Section 11-9.1(E) SFCC 1987 requires that any reallocation of proceeds from a  
19   voter-approved general obligation bond that deviates materially from the information provided to  
20   the electorate by the city of Santa Fe shall be voted upon by the governing body through the  
21   adoption of an ordinance.

22           B.     The governing body, through the adoption of this ordinance, authorizes the  
23   reallocation of funds from the 2012 parks bond as specified in Section 3 of this ordinance.

24                   **Section 2.     Legislative Findings**

25           A.     The 2012 Parks Bond was approved by voters in the amount of \$8,000,000 on

1 March 6, 2012.

2 B. Many of the projects that were to be funded have been completed. Others  
3 projects are in progress, or are waiting to be started.

4 C. A reallocation of bond funds is requested because of changes in priorities and  
5 needs for the affected city parks.

6 **Section 3. Reallocation**

7 A. The parks and recreation department shall remove the following parks from the  
8 current funding list:

9	(1)	Cross of the Martyrs	\$ 15,035.44
10	(2)	Thomas Macione Park	\$ 8,063.79
11	(3)	GCCC Park	\$ 48,573.45
12	(4)	Escondido Park	\$ 13,976.26
13	(5)	Monica Lucero Park	\$ 54,660.14
14	(6)	Las Acequias Phase IV Park	<u>\$155,610.95</u>
15			\$295,926.03

16 B. The funds specified above shall be reallocated or added to existing funding for  
17 improvements and additions as follows:

18	(1)	Patrick Smith Park	\$ 16,935.00
19		Replace irrigation, reseed turf areas, and install security cameras.	
20	(2)	Las Acequias Park	\$155,610.95
21		Improve/replace the pathway, add solar bollard lighting, add playground	
22		equipment, and add two (2) picnic tables.	
23	(3)	Monica Lucero Park	\$ 11,000.00
24		Improve the irrigation system.	
25	(4)	La Resolana Park	\$ 28,765.58

1  
2  
3  
4  
5  
6  
7  
8  
9  
10  
11  
12  
13  
14  
15  
16  
17  
18  
19  
20  
21  
22  
23  
24  
25

Arroyo stabilization.

(5)

Herb Martinez Park

\$ 5,000.00

Resurface basketball courts.

\_\_\_\_\_  
\$217,311.53

APPROVED AS TO FORM:



KELLEY A. BRENNAN, CITY ATTORNEY

*M/Legislation/Bills 2016/Authorize Bond Reallocation*

## City of Santa Fe Fiscal Impact Report (FIR)

This Fiscal Impact Report (FIR) shall be completed for each proposed bill or resolution as to its direct impact upon the City's operating budget and is intended for use by any of the standing committees of and the Governing Body of the City of Santa Fe. Bills or resolutions with no fiscal impact still require a completed FIR. Bills or resolutions with a fiscal impact must be reviewed by the Finance Committee. Bills or resolutions without a fiscal impact generally do not require review by the Finance Committee unless the subject of the bill or resolution is financial in nature.

### Section A. General Information

(Check) Bill:   X   Resolution:           

(A single FIR may be used for related bills and/or resolutions)

Short Title(s): AN ORDINANCE AUTHORIZING AN AMENDMENT TO THE 2012 GENERAL OBLIGATION (GO) BOND PARKS AND TRAILS IMPLEMENTATION PLAN TO REALLOCATE \$311,354 CURRENTLY DESIGNATED FOR VARIOUS CITY PARK IMPROVEMENTS TO OTHER CITY PARKS WITH HIGH MAINTENANCE NEEDS.

Sponsor(s): Councilors Maestas and Trujillo

Reviewing Department(s): Parks and Recreation Department

Persons Completing FIR: Rob Carter Date:            Phone: x2142

Reviewed by City Attorney: Kelly A. Brunner Date: 2/19/16  
(Signature)

Reviewed by Finance Director: [Signature] Date: 2-15-2016  
(Signature)

### Section B. Summary

Briefly explain the purpose and major provisions of the bill/resolution:

This bill would authorize the reallocation of funds from the 2012 Parks Bond from current designations to other improvements deemed more important. This legislation is pursuant to Ordinance 2015-24 that requires the adoption of an ordinance in order to authorize reallocation of bond funds.

### Section C. Fiscal Impact

**Note:** Financial information on this FIR does not directly translate into a City of Santa Fe budget increase. For a budget increase, the following are required:

- a. The item must be on the agenda at the Finance Committee and City Council as a "Request for Approval of a City of Santa Fe Budget Increase" with a definitive funding source (could be same item and same time as bill/resolution)
- b. Detailed budget information must be attached as to fund, business units, and line item, amounts, and explanations (similar to annual requests for budget)
- c. Detailed personnel forms must be attached as to range, salary, and benefit allocation and signed by Human Resource Department for each new position(s) requested (prorated for period to be employed by fiscal year)\*

#### **1. Projected Expenditures:**

- a. Indicate Fiscal Year(s) affected – usually current fiscal year and following fiscal year (i.e., FY 03/04 and FY 04/05)
- b. Indicate: "A" if current budget and level of staffing will absorb the costs  
"N" if new, additional, or increased budget or staffing will be required
- c. Indicate: "R" – if recurring annual costs  
"NR" if one-time, non-recurring costs, such as start-up, contract or equipment costs
- d. Attach additional projection schedules if two years does not adequately project revenue and cost patterns
- e. Costs may be netted or shown as an offset if some cost savings are projected (explain in Section 3 Narrative)

Finance Director: [Signature]

X     Check here if no fiscal impact

Column #:	1	2	3	4	5	6	7	8
	Expenditure Classification	FY _____	"A" Costs Absorbed or "N" New Budget Required	"R" Costs Recurring or "NR" Non-recurring	FY _____	"A" Costs Absorbed or "N" New Budget Required	"R" Costs - Recurring or "NR" Non-recurring	Fund Affected

Personnel\*      \$ \_\_\_\_\_      \_\_\_\_\_      \_\_\_\_\_      \$ \_\_\_\_\_      \_\_\_\_\_      \_\_\_\_\_      \_\_\_\_\_

Fringe\*\*      \$ \_\_\_\_\_      \_\_\_\_\_      \_\_\_\_\_      \$ \_\_\_\_\_      \_\_\_\_\_      \_\_\_\_\_      \_\_\_\_\_

Capital Outlay      \$ \_\_\_\_\_      \_\_\_\_\_      \_\_\_\_\_      \$ \_\_\_\_\_      \_\_\_\_\_      \_\_\_\_\_      \_\_\_\_\_

Land/ Building      \$ \_\_\_\_\_      \_\_\_\_\_      \_\_\_\_\_      \$ \_\_\_\_\_      \_\_\_\_\_      \_\_\_\_\_      \_\_\_\_\_

Professional Services      \$ \_\_\_\_\_      \_\_\_\_\_      \_\_\_\_\_      \$ \_\_\_\_\_      \_\_\_\_\_      \_\_\_\_\_      \_\_\_\_\_

All Other Operating Costs      \$ \_\_\_\_\_      \_\_\_\_\_      \_\_\_\_\_      \$ \_\_\_\_\_      \_\_\_\_\_      \_\_\_\_\_      \_\_\_\_\_

Total:      \$ \_\_\_\_\_      \_\_\_\_\_      \_\_\_\_\_      \$ \_\_\_\_\_      \_\_\_\_\_      \_\_\_\_\_      \_\_\_\_\_

\* Any indication that additional staffing would be required must be reviewed and approved in advance by the City Manager by attached memo before release of FIR to committees. \*\*For fringe benefits contact the Finance Dept.

## 2. Revenue Sources:

a. To indicate new revenues and/or

b. Required for costs for which new expenditure budget is proposed above in item 1.

Column #:	1	2	3	4	5	6
	Type of Revenue	FY _____	"R" Costs Recurring or "NR" Non-recurring	FY _____	"R" Costs - Recurring or "NR" Non-recurring	Fund Affected

\_\_\_\_\_      \$ \_\_\_\_\_      \_\_\_\_\_      \$ \_\_\_\_\_      \_\_\_\_\_      \_\_\_\_\_

\_\_\_\_\_      \$ \_\_\_\_\_      \_\_\_\_\_      \$ \_\_\_\_\_      \_\_\_\_\_      \_\_\_\_\_

\_\_\_\_\_      \$ \_\_\_\_\_      \_\_\_\_\_      \$ \_\_\_\_\_      \_\_\_\_\_      \_\_\_\_\_

Total:      \$ \_\_\_\_\_      \_\_\_\_\_      \$ \_\_\_\_\_      \_\_\_\_\_      \_\_\_\_\_      \_\_\_\_\_

### 3. Expenditure/Revenue Narrative:

Explain revenue source(s). Include revenue calculations, grant(s) available, anticipated date of receipt of revenues/grants, etc. Explain expenditures, grant match(s), justify personnel increase(s), detail capital and operating uses, etc. (Attach supplemental page, if necessary.)

As a reallocation, no additional funding is required from the City.

---

### **Section D. General Narrative**

1. **Conflicts:** Does this proposed bill/resolution duplicate/conflict with/companion to/relate to any City code, approved ordinance or resolution, other adopted policies or proposed legislation? Include details of city adopted laws/ordinance/resolutions and dates. Summarize the relationships, conflicts or overlaps.

This bill is pursuant to Ordinance #2015-24 that requires the adoption of an ordinance by the Governing Body to authorize the reallocation of bond funds approved by the voters.

---

### 2. Consequences of Not Enacting This Bill/Resolution:

Are there consequences of not enacting this bill/resolution? If so, describe.

Funding for unneeded or unwanted park improvements will remain, while those improvements deemed more important will not have the required funding to complete.

---

### 3. Technical Issues:

Are there incorrect citations of law, drafting errors or other problems? Are there any amendments that should be considered? Are there any other alternatives which should be considered? If so, describe.

None identified.

---

### 4. Community Impact:

Briefly describe the major positive or negative effects the Bill/Resolution might have on the community including, but not limited to, businesses, neighborhoods, families, children and youth, social service providers and other institutions such as schools, churches, etc.

By adopting this bill, the public will have assurances that the funds they approved through the 2012 GO Bond will be spent in the way they approved. Funding will be moved from projects that neighborhoods do not need or want, to those that have more tangible value to the public.

---