

1
2
3
4
5
6
7
8
9
10
11
12
13
14
15
16
17
18
19
20
21
22
23
24
25

CITY OF SANTA FE, NEW MEXICO

ORDINANCE NO. 2007-3

AN ORDINANCE

**AMENDING THE OFFICIAL ZONING MAP OF THE CITY OF SANTA FE;
CHANGING THE CLASSIFICATION OF A CERTAIN AREA FROM R-1
(RESIDENTIAL - 1 DWELLING UNIT PER ACRE) TO R-3 (RESIDENTIAL – 3
DWELLING UNITS PER ACRE); AND PROVIDING AN EFFECTIVE DATE WITH
RESPECT TO LAND COMPRISING 1.502 ACRES MORE OR LESS LOCATED
WITHIN SECTION 11, T16N, R8E, NEW MEXICO PRIMARY MERIDIAN LOCATED
WITHIN SECTION 4, T16N, R9E, NEW MEXICO PRIMARY MERIDIAN LOCATED
ON THE NORTH BANK OF THE ARROYO DE LOS CHAMISOS, SOUTH OF
PRINCESSA JUANA COURT” (CASE NO. ZA 2006-12 –JUANITA COMPOUND
REZONING).**

BE IT ORDAINED BY THE GOVERNING BODY OF THE CITY OF SANTA FE:

Section 1. The following real property (the “property”), located within the municipal boundaries of the city of Santa Fe, is restricted to and classified as R-3 located on the north bank of the Arroyo de los Chamisos, south of Princessa Juana Court lying and being situate within projected Section 4, T 16 N, R 9 E, NMPM., and being more particularly described in the attached legal description (Exhibit A) and survey (Exhibit B) and incorporated herein by reference.

Section 2. The official zoning map of the city of Santa Fe adopted by Ordinance No. 2001-27 is amended to conform to the change of zoning classification for the property set forth in Section 1 of this Ordinance.

EXHIBIT A
TO REZONING ORDINANCE 2007-3

Legal Description

PROPERTY DESCRIPTIONS

TRACT A1:

BEGINNING AT THE NORTHEAST CORNER OF THE HEREIN DESCRIBED
TRACT OF LAND FROM WHENCE S.F.C. 1012 BEARS:

N 04° 16' 40" W 87.77' THENCE
N 04° 19' 17" W 124.94' THENCE
N 52° 39' 06" E 123.50' THENCE FROM SAID POINT OF

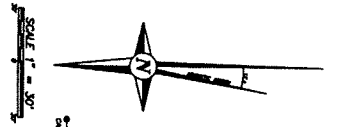
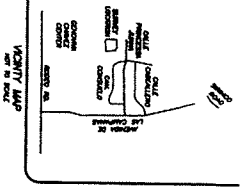
BEGINNING:

S 04° 16' 04" E 113.22' THENCE
S 04° 27' 20" E 120.31' THENCE
S 89° 24' 24" W 271.15' THENCE
N 00° 05' 51" E 255.24' THENCE
N 89° 36' 52" E 150.65' THENCE
N 00° 00' 00" E 5.00' THENCE
N 89° 36' 52" E 55.07' THENCE
S 00° 00' 00" E 26.29' THENCE
N 89° 30' 45" E 47.19' TO THE POINT AND PLACE

OF BEGINNING

PUBLIC NOTICE

THE SANTA FE COUNTY LAND USE ADMINISTRATION HAS NOT REVIEWED THE THIS PLAN IS NOT BEING FILED FOR THE PURPOSE OF CANCELING A SUB-OR FOR THE PURPOSE OF "CANCELLATION" AS SET FORTH IN SECTION 10-1-10 OF THE SANTA FE COUNTY LAND USE ADMINISTRATION CODE. EXTENSIVE REVIEW OF THE PLAN IS BEING CONDUCTED BY THE SANTA FE COUNTY LAND USE ADMINISTRATION. THE PLAN IS BEING FILED FOR THE PURPOSE OF CANCELLATION OF THE PLAN.



LEGEND/DEED-PLAT REFERENCES

- 1. ADDRESS A PART OF SURVEY MAPS, SURVEY PLATS & PART OF SURVEY PLATS FROM THE OFFICE OF THE COUNTY ENGINEER, SANTA FE COUNTY, NEW MEXICO.
- 2. ADDRESS A PART OF SURVEY MAPS, SURVEY PLATS & PART OF SURVEY PLATS FROM THE OFFICE OF THE COUNTY ENGINEER, SANTA FE COUNTY, NEW MEXICO.
- 3. ADDRESS A PART OF SURVEY MAPS, SURVEY PLATS & PART OF SURVEY PLATS FROM THE OFFICE OF THE COUNTY ENGINEER, SANTA FE COUNTY, NEW MEXICO.
- 4. ADDRESS A PART OF SURVEY MAPS, SURVEY PLATS & PART OF SURVEY PLATS FROM THE OFFICE OF THE COUNTY ENGINEER, SANTA FE COUNTY, NEW MEXICO.
- 5. ADDRESS A PART OF SURVEY MAPS, SURVEY PLATS & PART OF SURVEY PLATS FROM THE OFFICE OF THE COUNTY ENGINEER, SANTA FE COUNTY, NEW MEXICO.
- 6. ADDRESS A PART OF SURVEY MAPS, SURVEY PLATS & PART OF SURVEY PLATS FROM THE OFFICE OF THE COUNTY ENGINEER, SANTA FE COUNTY, NEW MEXICO.
- 7. ADDRESS A PART OF SURVEY MAPS, SURVEY PLATS & PART OF SURVEY PLATS FROM THE OFFICE OF THE COUNTY ENGINEER, SANTA FE COUNTY, NEW MEXICO.
- 8. ADDRESS A PART OF SURVEY MAPS, SURVEY PLATS & PART OF SURVEY PLATS FROM THE OFFICE OF THE COUNTY ENGINEER, SANTA FE COUNTY, NEW MEXICO.
- 9. ADDRESS A PART OF SURVEY MAPS, SURVEY PLATS & PART OF SURVEY PLATS FROM THE OFFICE OF THE COUNTY ENGINEER, SANTA FE COUNTY, NEW MEXICO.
- 10. ADDRESS A PART OF SURVEY MAPS, SURVEY PLATS & PART OF SURVEY PLATS FROM THE OFFICE OF THE COUNTY ENGINEER, SANTA FE COUNTY, NEW MEXICO.

NOTES:

1. THIS PLAN IS A PRELIMINARY PLAN AND IS SUBJECT TO THE APPROVAL OF THE SANTA FE COUNTY ENGINEER, SANTA FE COUNTY, NEW MEXICO.

2. THIS PLAN IS A PRELIMINARY PLAN AND IS SUBJECT TO THE APPROVAL OF THE SANTA FE COUNTY ENGINEER, SANTA FE COUNTY, NEW MEXICO.

3. THIS PLAN IS A PRELIMINARY PLAN AND IS SUBJECT TO THE APPROVAL OF THE SANTA FE COUNTY ENGINEER, SANTA FE COUNTY, NEW MEXICO.

4. THIS PLAN IS A PRELIMINARY PLAN AND IS SUBJECT TO THE APPROVAL OF THE SANTA FE COUNTY ENGINEER, SANTA FE COUNTY, NEW MEXICO.

5. THIS PLAN IS A PRELIMINARY PLAN AND IS SUBJECT TO THE APPROVAL OF THE SANTA FE COUNTY ENGINEER, SANTA FE COUNTY, NEW MEXICO.

6. THIS PLAN IS A PRELIMINARY PLAN AND IS SUBJECT TO THE APPROVAL OF THE SANTA FE COUNTY ENGINEER, SANTA FE COUNTY, NEW MEXICO.

7. THIS PLAN IS A PRELIMINARY PLAN AND IS SUBJECT TO THE APPROVAL OF THE SANTA FE COUNTY ENGINEER, SANTA FE COUNTY, NEW MEXICO.

8. THIS PLAN IS A PRELIMINARY PLAN AND IS SUBJECT TO THE APPROVAL OF THE SANTA FE COUNTY ENGINEER, SANTA FE COUNTY, NEW MEXICO.

9. THIS PLAN IS A PRELIMINARY PLAN AND IS SUBJECT TO THE APPROVAL OF THE SANTA FE COUNTY ENGINEER, SANTA FE COUNTY, NEW MEXICO.

10. THIS PLAN IS A PRELIMINARY PLAN AND IS SUBJECT TO THE APPROVAL OF THE SANTA FE COUNTY ENGINEER, SANTA FE COUNTY, NEW MEXICO.

SURVEYOR'S CERTIFICATE

I, SURVEYOR, HAVE THIS DAY SURVEYED THE ABOVE DESCRIBED TRACT AND HAVE FOUND THAT THE SAME IS ACCORDING TO THE RECORDS OF THE COUNTY ENGINEER, SANTA FE COUNTY, NEW MEXICO, AND THAT THE SAME IS SUBJECT TO THE APPROVAL OF THE SANTA FE COUNTY ENGINEER, SANTA FE COUNTY, NEW MEXICO.

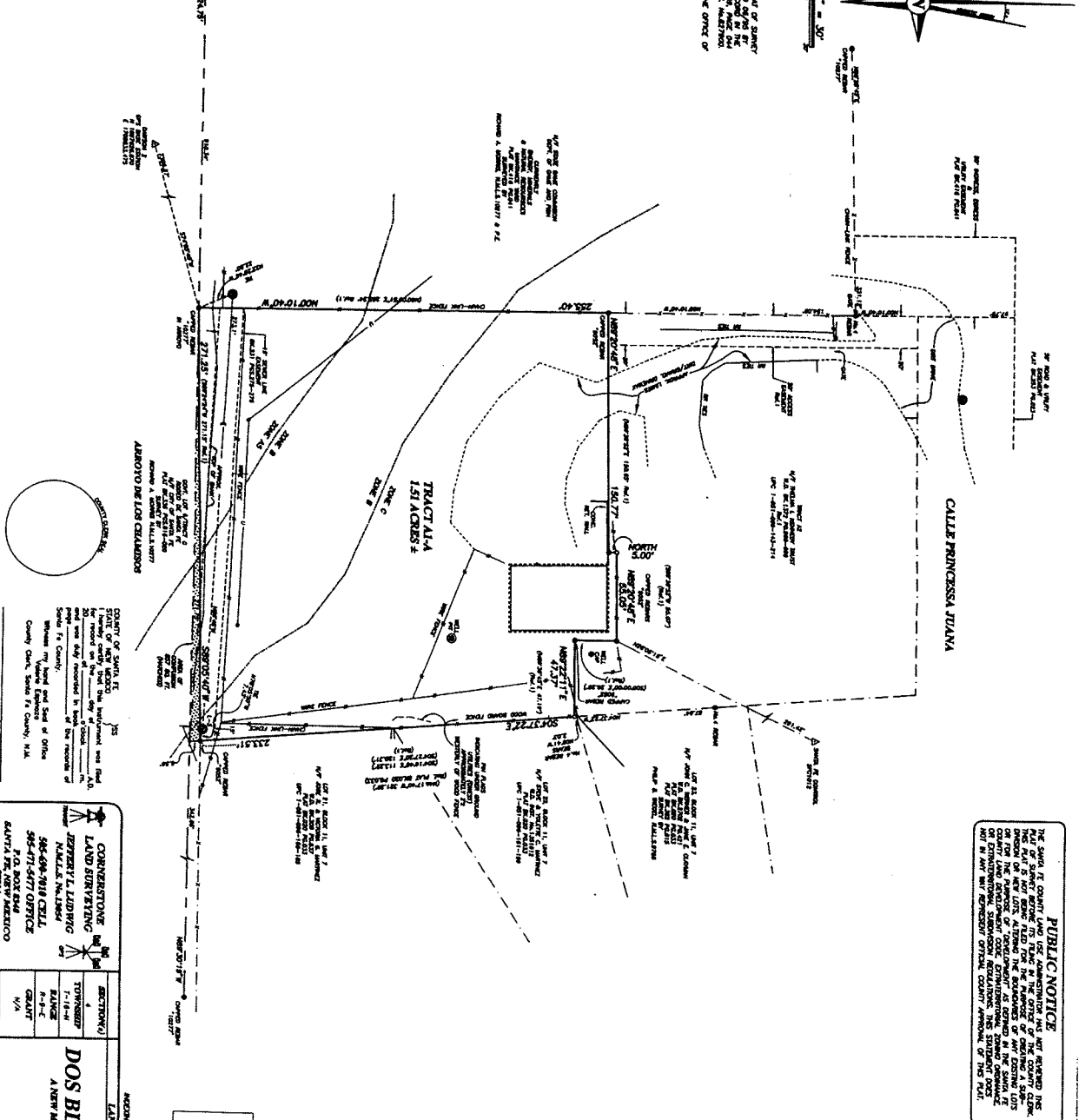
IN WITNESS WHEREOF, I HAVE HEREUNTO SET MY HAND AND SEAL OF OFFICE AT SANTA FE, NEW MEXICO, THIS 11TH DAY OF FEBRUARY, 2007.

 SURVEYOR

PRELIMINARY - FOR REVIEW ONLY

DATE: 02-11-07

BY: [Signature]



CONVERSION TABLE

LAND SURVEYING

DEPARTMENT OF LAND SURVEYING

506-499-5111 CELL

506-499-4171 OFFICE

P.O. BOX 10000

SANTA FE, NEW MEXICO 87504

Exhibit B to
 Rezoning Ordinance
 #2007-3

DOS BLANCOS LTD. CO.
 A NEW MEXICO LIMITED LIABILITY CO.
 TRACT A1

CITY AND COUNTY OF SANTA FE, NEW MEXICO

SECTION(S)	BLANKS	DATE
1-18-A	1-18-A	06/12/06
1-18-B	1-18-B	06/12/06
1-18-C	1-18-C	06/12/06
1-18-D	1-18-D	06/12/06
1-18-E	1-18-E	06/12/06
1-18-F	1-18-F	06/12/06
1-18-G	1-18-G	06/12/06
1-18-H	1-18-H	06/12/06
1-18-I	1-18-I	06/12/06
1-18-J	1-18-J	06/12/06
1-18-K	1-18-K	06/12/06
1-18-L	1-18-L	06/12/06
1-18-M	1-18-M	06/12/06
1-18-N	1-18-N	06/12/06
1-18-O	1-18-O	06/12/06
1-18-P	1-18-P	06/12/06
1-18-Q	1-18-Q	06/12/06
1-18-R	1-18-R	06/12/06
1-18-S	1-18-S	06/12/06
1-18-T	1-18-T	06/12/06
1-18-U	1-18-U	06/12/06
1-18-V	1-18-V	06/12/06
1-18-W	1-18-W	06/12/06
1-18-X	1-18-X	06/12/06
1-18-Y	1-18-Y	06/12/06
1-18-Z	1-18-Z	06/12/06

DATE: 02-11-07

BY: [Signature]

PLAT NO. 1-18-07

FILE NO. 1-18-07

SECTION(S) 1-18-A

BLANKS 1-18-A

DATE 06/12/06

REVISIONS