

1 in Section 1 of this Ordinance.

2 **Section 3.** This Ordinance shall be published one time by the title and general summary
3 and shall become effective five days after such publication.

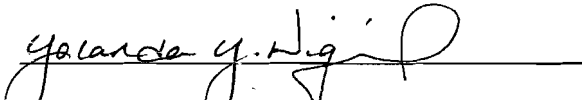
4 **Section 4.** The rezoning action with respect to the Property affected by this Ordinance is
5 subject to the time restrictions set forth in Section 14-3.5(D)(1) SFCC 2001 (Two-year
6 Review/Rescission).

7 PASSED , APPROVED AND ADOPTED this 30th day of January, 2008.

8 

9
10 DAVID COSS, MAYOR

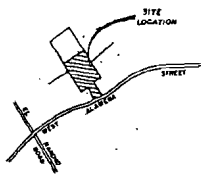
11
12 ATTEST:

13
14 
15 YOLANDA Y. VIGIL, CITY CLERK

16
17 APPROVED AS TO FORM:

18
19 
20 FRANK D. KATZ, CITY ATTORNEY

21
22
23
24
25



VICINITY MAP

AFFIOAVIT

STATE OF NEW MEXICO
COUNTY OF SANTA FE

THIS PROPOSED SUBDIVISION LIES WITHIN THE PLANNING AND PLATTING JURISDICTION OF THE CITY OF SANTA FE.

SUBSCRIBERS AND I STORN TO BEFOR ME THIS 25 DAY OF March 1990

MY COMMISSION EXPIRES 12-18-90
Notary Public

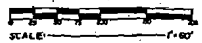
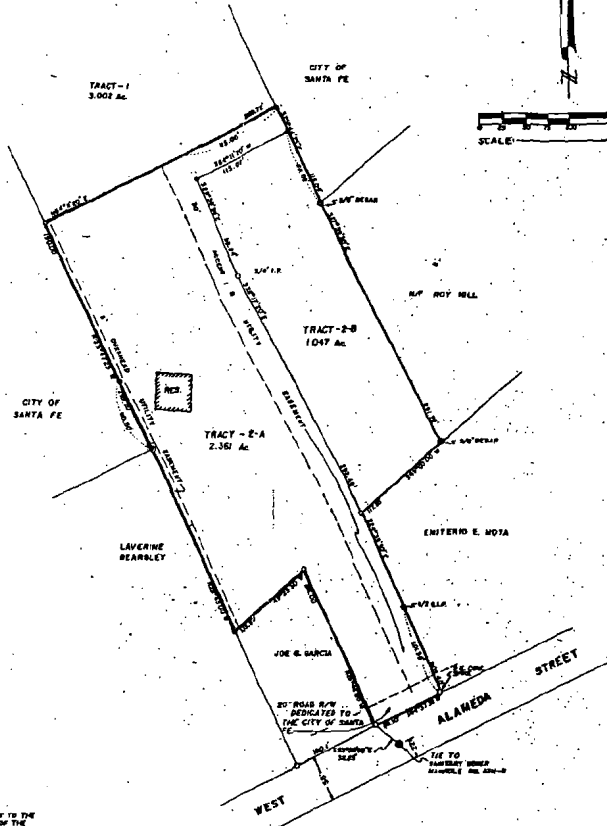
UTILITY COMPANY'S

Public Service Company (ELEC. DEPT.) 2-16-90
Public Service Company (WATER DEPT.) 2-12-90
Mountain States Telephone Company 2/12/90
Gas Company of New Mexico 2/16/90

NOTAR: SIGNATURES ARE WRITTEN FOR ALL SIGNING WRITERS. ALSO SUBJECT TO ALL LAWS AND ORDINANCES.

I HEREBY CERTIFY THAT THIS PLY IS AN ACCURATE DELINEATION OF LOTS OF A FIELD SURVEY COMPLETED BY ME IN 1988 TOGETHER WITH THE IMPROVEMENTS AS SHOWN HEREON THIS PLY MEETS THE SURVEYING STANDARDS SET BY THE STATE OF NEW MEXICO FOR LAND SURVEYORS.

Ernest M. ...
CERRILLO MARTINEZ, R.A.P.S. No. 1288
5110 CERRILLO RD., SANTA FE, N.M.
83058-9454



LEGEND

1. HATCHED PATTERN SHOWS THE SUBJECT AS SHOWN ON PLY.
2. HATCHED PATTERN SHOWS THE SUBJECT.
WITH DIMENSIONS OBTAINED FROM A PLY OF SURVEY BY GEORGE ROBERTA ADAMS 1889-90, 1900 TITLED H. CARRILLO REPLAT FILED AS INSTRUMENT NO. 190,849
NOTE: BOTH LOTS 2-A AND 2-B WILL BE INDIVIDUAL LOTS WITH WATER.

THE UNDERSIGNED ENGINEER DOES HEREBY CERTIFY THAT THE PLAN DIVISION AS SHOWN HEREON IS WITHIN THE CITY'S JURISDICTION AND IS IN ACCORDANCE WITH THE CITY'S LAWS AND ORDINANCES AND FURTHER DEDICATE EASEMENTS AND/OR RIGHT-OF-WAY AS SHOWN.

Henry Carrillo
Notary Public
Cecilia C. Sandoval
Notary Public

STATE OF NEW MEXICO
COUNTY OF SANTA FE

MY COMMISSION EXPIRES 12-18-90

Notary Public

CITY OF SANTA FE

Reviewed by City Engineer 7/27/90

Reviewed by City Planner 7/17/90

Reviewed by Public Works Director 7-11-90

APPROVED BY THE COMMISSIONERS OF THE PLANNING COMMISSION AT ITS MEETING ON 7/11/90

City Engineer

APPROVED BY THE CITY COUNCIL

Mayor

REPLAT OF SURVEY FOR
FAMILY TRANSFER
H. CARRILLO REPLAT
17 1/2 W. ALAMEDA STREET
SANTA FE, NEW MEXICO
712,782



Notary Public