




Agenda

CITY CLERK'S OFFICE

DATE 12/31/13 TIME 8:59 am

SERVED BY Francely Jesson

RECEIVED BY 

AIRPORT ADVISORY BOARD
Santa Fe Municipal Airport
Building 3002 (Just North of Terminal Building)
Thursday, January 9, 2014
4:00 PM

1. Call to Order
2. Roll Call
3. Approval of Agenda
4. Approval of November 7, 2013 Minutes
5. Approval of 2014 Meeting Calendar
6. Introduction – New Airport Management Intern, Justin Lowe
7. Reports & Updates from the Airport Manager
 - a. Monthly Air Service Update
 - b. Noise Complaints
 - c. Projects
 - i. Airport Master Plan Update/Airport Rates & Fees/Air Service Study
 - ii. Runway 2/20 MIRL Upgrade
 - iii. Taxiway F Extension
 - iv. Terminal Facility Expansion
 - v. Triennial Full-Scale Airport Emergency Exercise
 - d. Contracts & Leasing
8. Action Items/Presentations:
 - a. Presentation & Board Discussion/Action Item – La Bajada National Monument and how it may or may not impact flight paths to and from Santa Fe Municipal Airport (Elizabeth Hunke)
 - b. Action Item – General aviation landing fees at Santa Fe Municipal Airport
9. Subcommittee Updates:
 - a. Board Mission, Vision & Goals
10. Items from the Board
11. Public Comment:
 - a. *REMINDER: ALL PUBLIC COMMENTS BE LIMITED TO 5 MINUTES
12. Items to be Discussed at the February 6, 2014 Airport Advisory Board Meeting
13. Adjourn

Persons with disabilities in need of accommodations, contact the City Clerk's office at 955-6520, five (5) working days prior to meeting date.

AIRPORT ADVISORY BOARD
INDEX
JANUARY 9, 2014

Cover Page		Page 1
Call to Order and Roll Call	The Airport Advisory Board meeting was convened by the Chair at 4:00 pm, Santa Fe Airport, Building 3002, Santa Fe, New Mexico. A quorum was declared by roll call.	Page 2
Approval of Agenda	<i>Mr. Ortega moved to approve the agenda as presented, second by Mr. Padilla, motion carried by unanimous voice vote.</i>	Page 2
Approval of November 7, 2013 Minutes Corrections: Page 10: 4 th paragraph – 5 th sentence, terminal turbo props We do not collect access landing fees Page 8: 2 nd paragraph, 10 th line down, airline manufactured <i>and sold</i> Line 15: traffic which we hope however from past experience We do have a fuel fee in place and I don't know when we last reviewed or adjusted that fee Missing word: <i>annual</i> users fee Based upon the maximum <i>weight</i> for Page 6: Elizabeth Hunke's comments 7 th paragraph, 2 nd line – estimating that the total operations for this <i>yes year</i> Operations are 80,000 not \$80,000	Page 3	

Approval of 2014 Calendar	<i>Mr. Padilla made a motion to change the July 3rd meeting to July 10, 2014 and that the calendar for 2014 be approved as amended, second by Mr. Ortega, motion carried by unanimous voice vote.</i>	Page 3
Public Comments:	Presentation by Ms. Carolyn Coarsey, Family Assistance Foundation	Page 3-4
Introduction – Airport Management Intern, Justin Lowe	Informational	Page 4
Reports and Updates from Airport Manager <ul style="list-style-type: none"> a. Monthly Air Service Update b. Noise Complaints c. Projects d. Runway 2/10 MIRL Upgrade e. Taxiway F Extension f. Terminal Facility Expansion g. Triennial Full-Scale Airport Emergency Exercise h. Contracts and Leasing 	Informational, no formal action.	Page 4-5
Action Items/Presentation <ul style="list-style-type: none"> a. LaBajada National Monument Report b. General Aviation landing fees at Santa Fe Municipal Airport 	<i>Ms. Hunke moved that the Santa Fe Airport Advisory Board express its support for the current state statute that prohibits landing fees for general aviation operations at state funded airports, particularly Santa Fe Airport, second by Mr. Padilla, motion carried unanimously by voice vote.</i>	Page 6
Subcommittee Updates <ul style="list-style-type: none"> a. Board Mission, Vision and Goals 	Informational, no formal action taken	Page 7
Items from the Board	Informational	Page 8
Public Comment	Informational	Page 8
Adjournment	There being no further business to come before the Airport Advisory Board, the meeting was adjourned at 5:40 pm.	Page 9
Signature Page		Page 9

**AIRPORT ADVISORY BOARD
MINUTES
Thursday,
January 9, 2014 - 4:00p.m. – 5:40 p.m.
Santa Fe Municipal Airport, Building 3002, Santa Fe, NM**

1. CALL TO ORDER

The Airport Advisory Board meeting was convened by the Chair at 4:00 pm, Santa Fe Airport, Building 3002, Santa Fe, New Mexico.

2. ROLL CALL

A quorum was present at time of roll call.

Present

Carolyn Cook, Chair
Elizabeth Hunke
Bob Talarczyk
Chris Ortega
Ron Krohn
Troy Padilla
Mark Miller

Staff Present:

Francey Jesson, Airport Manager
Jon Bulthuis, Transportation Director
Justin Lowe, Airport Intern

Others Present

William Aneshensel, President, Aviation Association of Santa Fe
Robert Finerock, Aviation Association of Santa Fe
Marc Coan, Aviation Association of Santa Fe
Bob Wood, Santa Fe Air Traffic Manager
Kent Freier, Molzen Corbin
Glen Nicolof, CAP Squadron Commander
Michael Szczernim, NM Sport Aviation
Jim Robins, N21VF
Gary Davidson
Bill Sauter, Pilot
Carolyn Coarsey, Family Assistance Foundation
D. Chacon, Skymachines & APSF
Kenny DeLapp, Santa Fe Air Center

Fran Lucero, Stenographer

3. APPROVAL OF AGENDA

Mr. Ortega moved to approve the agenda as presented, second by Mr. Padilla, motion carried by unanimous voice vote.

4. Approval of November 7, 2013 Minutes

Corrections:

Page 10: 4th paragraph – 5th sentence, ~~terminal~~ turbo props

We do not collect ~~access~~ landing fees

Page 8: 2nd paragraph, 10th line down, airline manufactured *and sold*

Line 15: traffic ~~which we hope however from past experience~~

We do have a fuel fee in place and I don't know when we last reviewed or adjusted that fee

Missing word: *annual* users fee

Based upon the maximum *weight* for

Page 6: Elizabeth Hunke's comments

7th paragraph, 2nd line – estimating that the total operations for this ~~yes~~ year

Operations are 80,000 not \$80,000

Mr. Ortega moved to approve the minutes as amended, second by Mr. Padilla, motion carried by unanimous voice vote.

5. Approval of 2014 Meeting Calendar

Mr. Padilla made a motion to change the July 3rd meeting to July 10, 2014 and that the calendar for 2014 be approved as amended, second by Mr. Ortega, motion carried by unanimous voice vote.

The Chair amended the Agenda to allow Ms. Coarsey to present before the Airport Regular Order of Business. The Board agreed with this change.

6. Carolyn Coarsey, Family Assistance Foundation

Ms. Coarsey introduced the Family Assistance Foundation as a non-profit organization founded in 2000 for the purpose of helping all stakeholders when there is any kind of disaster that is related mostly to transportation. The Co-Founder, Jeff Morgan and Ms. Coarsey both live in Santa Fe and would like to be useful to the Airport in any way that they can be. One big point is they help organizations; they just did a community workshop at the Phoenix Airport to pull all their stakeholders together to focus not just on logistics but to identify how they would help the families in the case of an emergency or disaster. Both Mr. Morgan and Ms. Coarsey bring experience from the aviation side; he was Delta Airlines for 25 years and up their Emergency Management Plan in Delta. For many years it was assumed that all airlines had an Emergency Plan and knew how to deal with families in a disaster which wasn't true. Her own experience, she was a flight attendant as a trainer for Eastern Airlines when they had three major disasters and lost over 300 people over 5 years. Her fiancé was killed in Delta 191. This prompted her to look deeper in to how the airport dealt with employees and families, they were not prepared. Ms. Coarsey received her Ph.D. from University of New Mexico focusing on Does it make a difference on how organizations associate with the accident, does it make a difference on how they handle the public. The FAA sponsored the research and it was the beginning of family assistance; not just in the United States but in the world. Research started in Aviation and now it is in many other industries.

Ms. Coarsey extended an invitation to the Board and to Ms. Jesson to attend a workshop that will be held in Santa Fe (invitation to be sent to Ms. Jesson) on how to deal with families and how do you help organize the family side. Ms. Jesson expressed how pleased she is to have made contact

with Ms. Coarsey and talked about the need of a family assistance program; an Airport our size needs the support. (Attachment: Family Assistance Foundation Newsletter – Exhibit A) Ms. Coarsey added that they work with airlines, cruise line, rail, etc., they have a 24 hour hot line that can be activated with at least 100 phones lines within an hour.

7. Introduction – New Airport Management Intern, Justin Lowe

Mr. Lowe has been with the airport for 1 month and will complete a 6-month internship. He is working on projects and doing a great job. Ms. Lowe comes from Indianapolis, Indiana, 2 degrees from Purdue University; Undergrad in Flight Technology and received Masters a year later in Aviation and Aerospace Management. He is also a Pilot.

The board welcomed Justin to the Santa Fe Airport staff.

8. Reports & Updates from the Airport Manager

a. Monthly Air Service Update (Exhibit B)

Page 1: Enplanements year to date, American numbers not included, United is included. Without American, calendar year 2013, total passengers we are at 131,000, 65,000 enplanements and 66,000 deplanements. Hopeful to end year at approximately 135,000 passengers. Second page shows the previous year in order to make a comparison. From 2000 to 2008-2009, numbers fluctuated. Third page, graph shows year after year.

Mr. Padilla: Are we going to get to the point where we count the 135 enplanements?
Ms. Jesson said it is difficult to get these numbers; official numbers do come from NMDOT that show 135. The only way to get enplanement and deplanement on Charters is to know first of all when there is a Charter. This is not isolated to this airport; most airports have a difficult time tracking passengers on non-airline aircraft.

Page 2: Flight Schedules (Exhibit C)

Note that LA flight will not be daily any longer so seats will be sold there. 6,332 inbound sheets and equal amount of 6,332 outbound – 12, 664. To forecast every month will allow Ms. Jesson to project the load factors. It is not known when the LA flight will go daily again.

Mr. Padilla: Every month the schedule will reduce and/or increase based on business.
Ms. Jesson reported that this information was not collected last year at this time. The Chair appreciates the content of this report.

b. Noise Complaints

None

c. Projects

Airport Master Plan Update/Airport Rates & Fees/Air Service Study
State Aviation Department is working on their budget; they have not provided an update on funding for the Santa Fe Municipal Airport. The three studies listed above qualify for federal funding. The state is working with the airport to provide funding prior to the approval and distribution of the federal funding. Once federal funding is available the reconciliation would be worked on. Federal fiscal year is October through September and state/city fiscal year is July to June. If Congress does not provide the funding with sufficient time, it will make it difficult for the local airports to move forward with projects.

- d. Runway 2/20 MIRL Upgrade
Scheduled to begin in the spring; Contractor wanted to get started earlier but the temperatures were not on their side. Their contract has been modified to start in the spring due to the weather obstacles.
- e. Taxiway F Extension
Project was started and will continue until January 16th and they will restart once it is warmer.

Mr. Padilla: Concern that there was dust on an airplane that landed. Ms. Jesson will assure that a water truck is out and cleans up.

Will there be a way to keep the dust at a minimum? Ms. Jesson will assure that there is a corrective plan for this concern.

- f. Terminal Facility Expansion
Mr. Bulthuis is taking this topic to the NM Legislature and it will go forward at the top of the list from the City as a proposal through capital improvements. The NM Legislature starts on January 21st. Communications with the local delegation has already started.
- g. Triennial Full-Scale Airport Emergency Exercise
Required by FAA to have a full-scale airport emergency exercise once every 36 months. The last one was in 2011 and the next one needs to be late April or early May, 2014. Stakeholders meeting is scheduled for January 29, 2014 in which invitations have been sent out to members of the emergency response community; the hospitals, National Guard, Red Cross, Airlines, Fire, Police, etc. Ms. Jesson will take the two or three top objectives of what they would like to test and roll in to the scenario and exercise. Ms. Jesson has been the Incident Commander and designed approximately 4 of these exercises. Normally there is 8-10 months to design; we do not have that amount of time for design. The only people who will know details of the scenario are the designers and evaluators. Ms. Jesson has had a very good meeting with the National Guard; a request was made to use their facility for the training. Justin Lowe, Anita Medina and Ms. Jesson will be working on this exercise diligently.

Mr. Padilla: We have always had a struggle getting volunteers, advertisement and publications was recommended.

Ms. Jesson said that the date will get set and the Board will be advised, she will work on getting people to be victims.

Mr. Talarczyk asked about the liability.

Ms. Jesson said that those who participate sign a Hold Harmless document which protects the airport. There will be service providers on site should something real happen.

- h. Contracts & Leasing
Ms. Jesson stated that she is negotiating two existing contracts. She is also talking to potential tenants and to tenants who have existing leases.

9. Action Items/Presentations

- a. Presentation & Board Discussion/Action Item – La Bajada National Monument and how it may or may not impact flight paths to and from Santa Fe Municipal Airport (Elizabeth Hunke)

Ms. Hunke attended a meeting in La Cienega when Diana Strauss who is from the Coalition of La Bajada Mesa spoke and Ms. Hunke offered her phone number (505-988-4060) for the record. In Ms. Strauss presentation it emphasized that turning the La Bajada Mesa in to a National Monument would help to preserve the cultural, historical and National resources there and the rural way of life of people that live in this community. The Visitor Center would be the Santa Fe Canyon Ranch House. Ms. Strauss projected that the economic impact of the La Bajada National Monument would be \$30 million dollars and 500 jobs. The nearby communities like La Cienega would be gateways to the park. This group of people has already sent requests to President Obama to designate this area as a National Monument. The audience reaction was negative, farmers and ranchers that their grazing leases up at Caja del Rio would be terminated, their rural life would be destroyed; they were not pleased. Other comments from other audience members ran along the lines that the National forest land would not be developed in subdivisions and one comment from Ms. Strauss was that they did not want the land developed.

Ms. Hunke stated that she looked at the La Cienega Valley Association website and saw that the Board did vote to oppose the La Bajada National Monument. Ms. Hunke provided maps that were posted at the previous meeting and explained the location. Ms. Hunke suggested that the Board request that boundaries be specific and the location of the National Monument be minimized to the airport operations. Secondly, if we could get information from other airports that might be near other monuments that have been set up in recent years.

Ms. Jesson commented that AOPA be included in the discussion and research. The Airport does have a stake in this conversation and the question is; if a Monument is established how will the FAA respond as far as over flight and does the upkeep of the monument put a restriction on over flights? Will it affect flight altitudes? If there is no restriction on over flights then she does not think it would have such an impact but if there is a restriction on over flight it would have a great impact. Mr. Coan, Airport Support Network Representative, said that he would get answers to these questions from the Aircraft Owners and Pilots Association (AOPA).

- b. Action Item – General aviation landing fees at Santa Fe Municipal Airport
Ms. Hunke stated that we discussed extensively at the November meeting.

Ms. Hunke moved that the Santa Fe Airport Advisory Board express its support for the current state statute that prohibits landing fees for general aviation operations at state funded airports, particularly Santa Fe Airport, second by Mr. Padilla, motion carried unanimously by voice vote.

10. Subcommittee Updates

a. Board Mission, Vision & Goals

A Mission Statement has not been available. The Chair, Mr. Talarczyk and Mr. Ortega drafted a Mission Statement (read verbally). Mission Statements should be clear, memorable and concise.

Provide proactive and balanced advice to the Governing Body to promote safe efficient and environmentally responsible airport services and facilities that meet or exceed the expectations of Northern New Mexico.

Mr. Ortega referenced the Code of Conduct and the Opening Meetings Act document which is provided by the City. There was discussion to provide new members an executive summary on the responsibilities set forth for the Board. Proposal was to consolidate the 10-page Code of Conduct in to a one-page summary. Any suggestions can be sent to the Chair no later than Friday, January 24, 2014. The Chair also noted that precaution should be exercised when sending e-mails. Once the suggestions are gathered the sub-committee will meet.

Mr. Padilla asked for clarification on the document that is mentioned; is it the actual ordinance and Code of Ethics?

Mr. Ortega stated that it is not the intent to remove anything from the document, for example there are some items that relate strictly to city employees, the board members are not city employees, they are a governmental body.

Mr. Talarczyk – Ms. Jesson has gotten the board more involved and there are pro-active ideas from the Board for the success of the airport. Mr. Talarczyk provided the Board with suggested documents for review and comment.

PROP-A-GANDA

Listing: Safety, Economy, Convenience, Environmental Responsibility, Accessibility, State-of-the-Art Services, Economic Engine, Balance. “Provide Proactive & Balanced Advice.”

Second handout: Propeller with topic lines; Economic Engine, National Defense, Transportation Network (Passenger/Freight), Training, Neighborhood, Pleasure, Jobs, Emergency and (sub-headings).

The Chair commented that there is a need to educate people in Santa Fe about the airport and she is open to suggestions and additions. The goal is to be more cohesive on what the Advisory Board does, what they can do and what they are capable of. Be cognizant to be reminded of what our jobs are.

Mr. Padilla commented that the two handouts are great; the content is definitely something that will help the airport and the board.

11. Items from the Board

Election of Vice Chair to be on Agenda for next month.

Thank you to Troy for getting G-mail addresses for the board. Mr. Padilla asked that the g-mails be made public, possibly on the city web-site. Ms. Jesson asked that the Board provide her the corrected e-mail, she will handle the corrections.

12. Public Comment

Marc Coan suggested that the Code of Ethics Document or any document created by the board be run by the City Legal Department.

The Chair asked that the board provide Ms. Jesson with the preferred E-mail addresses to be used and Ms. Jesson will provide them to the City Clerk as public record.

Many of the audience members and board members complimented the Airport restaurant operation and the services that they provide so willingly.

Bill Aneshensel said that he will come up with volunteers for the exercise. We have a highly skilled Forest Service Pilot who can answer questions on federal land.

AOPA meeting will be held next Thursday evening at 7:00 pm at the Marriott Pyramid North in Albuquerque, NM.

Jim Robbins – 1B Aircraft Owner – what do you envision with this PROP-A-GANDA document? Mr. Talarczyk said that it is a working draft for the board. Mr. Robbins stated that AOPA, which is enormous, has an area called Government Affairs, and certainly market, 365 days a year the value of their airports.

Marc Coan and Jim Robbins will work together with Ms. Jesson and introduce her to Greg.

2009 – State did an Economic Impact report on the 56 airports.

Marc Coan asked about the status of the Commercial Minimum Standards Document. Justin Lowe will work on this and it will require meeting and stakeholder information.

Ms. Jesson stated that the priority is the emergency exercise.

Kent Freier noted that the New Mexico Airport Managers Association will have a day at the legislature on February 19th.

Bob Wood: I would like to express support for the restaurant. Owner has always been supportive for meetings and events and she is also so willing to talk to FAA in support of the Airport.

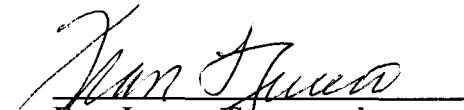
Mr. Wood also informed the Board that the Tower has 2 new controllers and are now fully staffed which is a total of 6 positions.

13. Adjournment

There being no further business to come before the Airport Advisory Board, the meeting was adjourned at 5:40 pm.

Signature Page:

Carolyn Cook, Chair



Fran Lucero, Stenographer

Sharing the Journey

Family Assistance
Foundation

"Working Together is the Answer...Compassion Consciousness is the Goal."

VOLUME 11 ISSUE 1

The Official Newsletter of the Family Assistance Foundation

Summer 2013

The Family Assistance Foundation, Inc. is an independent non-profit corporation founded for the purpose of empowering people following tragedy. Our mission is to support and improve business and industry responses to emergencies and disasters.

Inside this issue:

- 1 American Airlines gives \$25,000 to 3379 Memorial
Hal Ruchelman-
New Board Member
- 2 American Eagle Flight 3379 Memorial Efforts
Kinship of Sorrow
- 3 From the Editor
Recommended Book
- 4 An Employee Perspective
- 5 Flight 3379
- 6 Embracing Transparency to Build Credibility
Aviem's updated website released
- 7 Hal's Interview with Carolyn
AE 3379 Fundraiser Date Set
- 8 Soaring Above Life's Storms
- 9 Two Experienced Aviation Plaintiff's Attorneys Participate in Videos
- 10 Two Videos on Aviation Accident Response
- 11 Two Videos - continued
- 12 FAF Opens 2013 with Qatar Training
- 13 Foundation Member/ Partner Meeting in London
- 14 Virgin Australia Receives Training
- 15 Statoil Receives Training
Royal Brunei Airlines Receives Training
- 16 FlexJet/Jet Solutions Care Team Receives Training
FAF Trains New and Experienced Members

AMERICAN AIRLINES GIVES \$25,000 TO 3379 MEMORIAL

On June 13th, 2013, Lauren Anderson Slade, a survivor of American Eagle Flight 3379, and her mother, Marie Anderson, drove to Greenville, SC, to meet with Lisa Maldonado, Manager - Regulatory Compliance Programs with American Eagle, and Lauren Tascione, Manager of Emergency Response, CARE Program, Business Continuity Planning with American Airlines, to receive a check for \$25,000 for the Memorial Fund.

Soon after Lauren Slade wrote to Dan Garton, President of American Airlines, about the memorial, Mr. Garton met with Lisa and discussed sending a contribution. Everyone on the committee was delighted to learn the amount of the check, which will certainly kick off the committee's fundraising efforts in a big way!

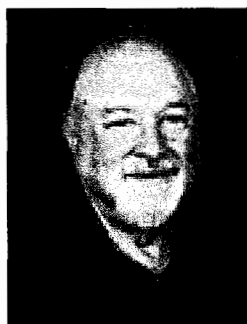
A huge thanks goes to Lisa and Lauren for their assistance in making this possible. Lisa was on duty the night of the accident and actually responded to the crash site. She later went to the emergency room to try to get information about Lauren. Lisa has been active with the Foundation since it was founded. Lisa, along with Lauren Tascione, has been a most active advocate for the memorial efforts.

The Family Assistance Foundation now has a Facebook page with information about how to donate to the memorial fund. No amount is too small, and we need everyone's help!



Lauren Tascione, American Airlines;
Marie Anderson; Lisa Maldonado, American Eagle
Airlines; Lauren Anderson Slade

HAROLD (HAL) RUCHELMAN - NEW BOARD MEMBER



Hal Ruchelman serves on the Board of the Family Assistance Foundation as a family survivor. Hal lost his wife, Carole, in an excursion accident in Chile, while they were on a cruise vacationing in South America.

Hal was born and raised in Brooklyn, NY. After graduating from The City College of New York as an Electrical Engineer, he served in the US Army from 1962-1964. It was then that he and Carole married. He worked for the Consolidated Edison Company of New York for 42 years, retiring in 2001. During this time, Hal lived in Sayreville, NJ, where he raised his three children: Evan, Suzanne, and Andrea. He now enjoys his four grandchildren: Rebecca, Samantha, Jordan, and Dean.

Hal currently lives in Monroe Township, NJ, where he has served on various community committees and now serves on the Architectural, Building and Grounds committee. He also served as President of his synagogue and is a member of the Knights of Pythias. He continues to remain active in the Institute of Electrical and Electronics Engineers (IEEE), having served as the chairman of the New York Section, and is currently the web master for the Section, the Metropolitan Area Sections Activities Council and the NY Chapter of the Power Engineering Society. He's also the audit chairman of the Northeast Region of the IEEE.

In his spare time, Hal enjoys traveling with his family and friends.

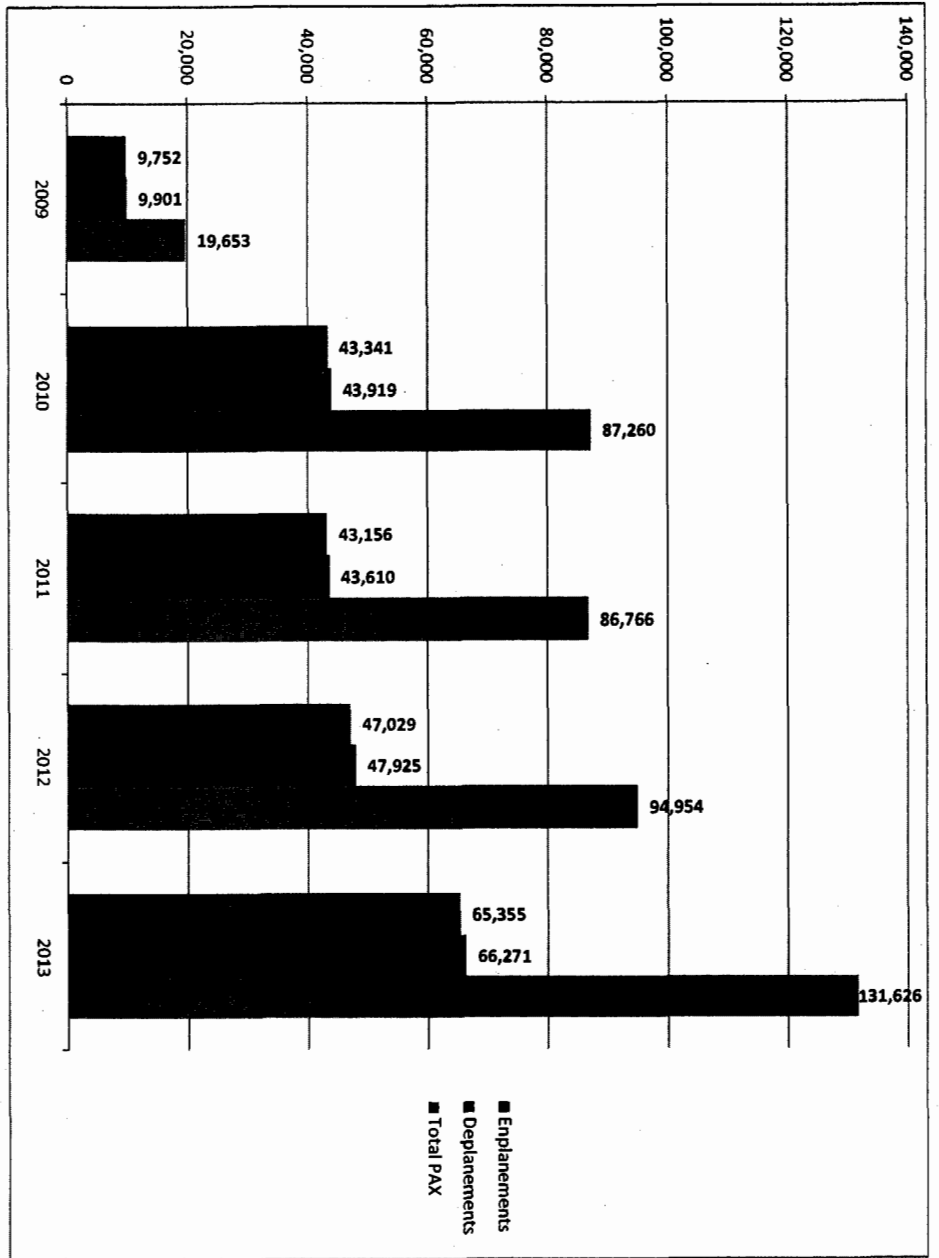
Continued on page 7

*** EXHIBIT "A" IS AVAILABLE IN IT'S ENTIRETY IN THE CITY CLERK'S OFFICE ***

Calendar Year				January	February	March	April	May	June	July	August	September	October	November	December	Total
American Eagle	PAX	Enplanements		2,858	2,694	3,391	3,962	4,185	4,612	5,244	5,193	4,103	4,690	3,282		45,157
		Deplanements		2,657	2,630	3,412	3,864	4,387	5,180	5,928	5,636	3,994	4,500	3,221		45,157
		Total PAX														
Aircraft Ops	Landings	E145														
		E140														
		E135														
	Total Landings															
	Departures	E145														
		E140														
E135																
Total Departures																
Total Aircraft Ops																
United Express	PAX	Enplanements						1,727	1,915	1,939	2,346	2,203	2,530	1,944	1,940	17,534
		Deplanements						1,488	1,890	2,004	2,392	2,335	2,443	1,921	1,977	17,534
		Total PAX														
Aircraft Ops	Landings	CRJ-200											62	59	62	183
		Departures	CRJ-200											62	59	62
	Total Aircraft Ops												121	118	124	365
Great Lakes	PAX	Enplanements		483	447	659	612	339	413	430	429	381	404			4,597
		Deplanements		465	538	736	639	287	296	382	383	290	396			4,412
		Total PAX		948	985	1,395	1,251	626	709	812	812	671	800			9,009
Aircraft Ops	Landings	B1900														0
		Departures	B1900													
	Total Aircraft Ops			0	0	0	0	0	0	0	0	0	0	0	0	0

Exhibit B

Year	Deplanements	Change from Previous Yr. - Total PAX	Notes
2000	44,000	No data	Source - FAA Enplanements Database. Deplanement Numbers Are Estimated
2001	41,800	-5,079	Source - FAA Enplanements Database. Deplanement Numbers Are Estimated
2002	18,433	-46,022	
2003	18,782	26	
2004	20,520	3,122	
2005	10,793	-18,419	
2006	9,844	-1,610	
2007	11,534	3,004	
2008	350	-22,024	Source - FAA Enplanements Database. Deplanement Numbers Are Estimated
2009	9,901	18,968	American Eagle only operating June thru Dec.
2010	43,919	67,607	
2011	43,610	-494	
2012	47,925	8,188	Great Lakes started operating in Dec
2013	66,271	36,672	United Express started operating May 1, numbers YTD thru Nov 30
2014	0	0	



SANTA FE MUNICIPAL AIRPORT JANUARY 2014 COMMERCIAL SEAT COUNTS

Seats Outbound		To D/FW		To LAX	To DEN		
		FLT#3196	FLT#2800	FLT#2635 Xwed	FLT#varies (ALL)	FLT#5944 (All)	
		ERJ-145	ERJ-140	CRJ-200	ERJ-145	ERJ-145	
1/4	Saturday	50	44	50	50	50	244
1/5	Sunday	50	44	50	50	50	244
1/6	Monday	50	44	50	50	50	244
1/7	Tuesday	50	44	50	50	50	244
1/8	Wednesday	50	44		50	50	194
1/9	Thursday	50	44	50	50	50	244
1/10	Friday	50	44	50	50	50	244
1/11	Saturday	50	44		50	50	194
1/12	Sunday	50	44	50	50	50	244
1/13	Monday	50	44		50	50	194
1/14	Tuesday	50	44	50	50	50	244
1/15	Wednesday	50	44		50	50	194
1/16	Thursday	50	44	50	50	50	244
1/17	Friday	50	44	50	50	50	244
1/18	Saturday	50	44		50	50	194
1/19	Sunday	50	44	50	50	50	244
1/20	Monday	50	44		50	50	194
1/21	Tuesday	50	44	50	50	50	244
1/22	Wednesday	50	44		50	50	194
1/23	Thursday	50	44	50	50	50	244
1/24	Friday	50	44	50	50	50	244
1/25	Saturday	50	44		50	50	194
1/26	Sunday	50	44	50	50	50	244
1/27	Monday	50	44		50	50	194
1/28	Tuesday	50	44	50	50	50	244
1/29	Wednesday	50	44		50	50	194
1/30	Thursday	50	44	50	50	50	244
1/31	Friday	50	44	50	50	50	244
							6,332
Seats inbound		From D/FW		From LAX	From DEN		
		FLT#3196	FLT#2800	FLT#2635 Xwed	FLT#varies (ALL)	FLT#5944 (All)	
		ERJ-145	ERJ-140	CRJ-200	ERJ-145	ERJ-145	
1/4	Saturday	50	44	50	50	50	244
1/5	Sunday	50	44	50	50	50	244
1/6	Monday	50	44	50	50	50	244
1/7	Tuesday	50	44	50	50	50	244
1/8	Wednesday	50	44		50	50	194
1/9	Thursday	50	44	50	50	50	244
1/10	Friday	50	44	50	50	50	244
1/11	Saturday	50	44		50	50	194
1/12	Sunday	50	44	50	50	50	244
1/13	Monday	50	44		50	50	194
1/14	Tuesday	50	44	50	50	50	244
1/15	Wednesday	50	44		50	50	194
1/16	Thursday	50	44	50	50	50	244
1/17	Friday	50	44	50	50	50	244
1/18	Saturday	50	44		50	50	194
1/19	Sunday	50	44	50	50	50	244
1/20	Monday	50	44		50	50	194
1/21	Tuesday	50	44	50	50	50	244
1/22	Wednesday	50	44		50	50	194
1/23	Thursday	50	44	50	50	50	244
1/24	Friday	50	44	50	50	50	244
1/25	Saturday	50	44		50	50	194
1/26	Sunday	50	44	50	50	50	244
1/27	Monday	50	44		50	50	194
1/28	Tuesday	50	44	50	50	50	244
1/29	Wednesday	50	44		50	50	194
1/30	Thursday	50	44	50	50	50	244
1/31	Friday	50	44	50	50	50	244
							6332
Total Seats Available January							12,664

5
Exhibit C

**Santa Fe Municipal Airport
Commercial Flight Schedule - January 2014***

* All schedules subject to change/see official AE/UX Timetables

American Eagle	Effective	Flt #	<i>SAF to DFW</i>	Days	Aircraft	Flt #	<i>DFW to SAF</i>	Days	Aircraft		
			Departs	Arrives			Departs	Arrives			
		3196	11:20A	1:55P	All	ER4	3196	10:05A	10:50A	All	ER4
	1/14/14	2800	4:25P	7:05P	Sat	ERD	2800	3:10P	3:55P	Sat	ERD
		2800	5:15P	7:55P	Sun-Fri	ERD	2800	4:00P	4:45P	Sun-Fri	ERD
			<i>SAF to LAX</i>	Days			<i>LAX to SAF</i>	Days	Aircraft		
		Departs	Arrives			Departs	Arrives				
	1/4 -1/7	2635	2:40P	3:45P	M,T, F, S, S	CR2	2635	11:15A	2:10P	M,T, F, S, S	CR2
	1/9/14	2625	2:40P	3:45P	T, Th, F, S	CR2	2625	11:15A	2:10P	T, Th, F, S	CR2

United Express			<i>SAF to DEN</i>	Days			<i>DEN to SAF</i>	Days	Aircraft		
			Departs	Arrives			Departs	Arrives			
	1/4 -1/13	Varies	8:00A	9:14A	All	ER-4	5944	12:29P	1:43P	All	ER-4
	1/14 - 1/31	Varies	7:51A	9:05A	All	ER-4	5944	11:09A	12:23P	All	ER-4
	1/4 - 1/13	5944	2:13P	3:30P	All	ER-4	5937***	8:10P	9:24P	All	ER-4
1/14 - 1/31	5944	12:53P	2:07P	All	ER-4	5937**	8:36P	9:50P	All	ER-4	

ER-4 = ERJ 145 (50 seat jet), ER-D = ERJ 140 (44 seat jet)

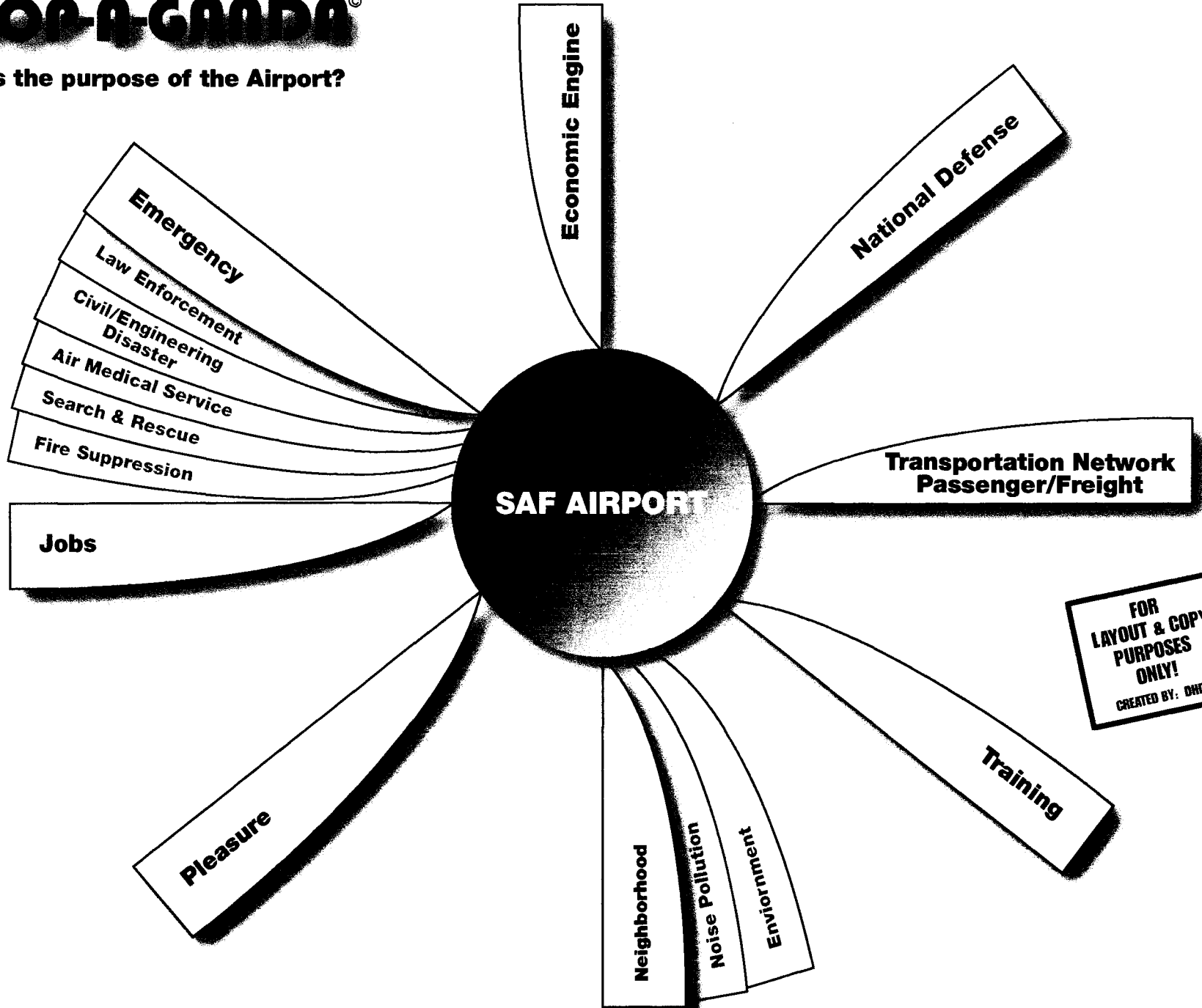
CR-2 = CRJ 200 (50 seat jet)

** = RON (remain over night)

***=flight times vary by about 25 minutes plus or minus depending on the day of the week

PROP-A-GANDA®

What is the purpose of the Airport?



FOR LAYOUT & COPY PURPOSES ONLY!
CREATED BY: DHD

Submitted

SAF Stakeholders Need:

- **Safety**
- **Economy**
- **Convenience**
- **Environmental Responsibility**
- **Accessibility**
- **State-of-the-Art Services**
- **Economic Engine**

- **Balance**



“Provide Proactive & Balanced Advice”

Schubert D

Sign In

<u>Name</u>	<u>Affiliation</u>
Glen Nicolof	CAP. SQUADRON COMMANDER
MICHAEL SZCZERANSKI	NM SPORT AVIATION
BOB WOOD	SAF AACT
Jim ROBINS	N21VF
Garry DOWSON	N/BZF
Bill SAUTER	LCL PILOT
Carol V. CLARY	Founder
William E. Areskessel	President, Aviation Association of Santa Fe
Marc Coan	Skymachines & AASF
D. Chacón	