



Agenda

DATE 1/8/14 TIME 2:28p

FORWARDED BY Debra Garcia

RECEIVED BY [Signature]

ARTS COMMISSION
Monday, January 13, 2014
City Councilors' Conference Room
200 Lincoln Avenue
505-955-6707
5:00 PM

1. Call to Order
2. Roll Call
3. Approval of Agenda
4. Approval of Minutes
 - a) November 12, 2013
5. Report of Director
 - a) Introduction of Program Planner
 - b) 2014 Funding Application Review Dates
6. Reports and Updates
 - a) At the Artist's Table: Valentine's Day Dinner
 - b) 2013 Work Plan Accomplishments
 - c) 2014 Work Plan Update
7. Event Evaluations
8. Adjourn

Persons with disabilities in need of accommodations, contact the City Clerk's office at 955-6520 five (5) working days prior to meeting date

ARTS COMMISSION
INDEX
JANUARY 13, 2014

Cover Page		Page 1
Call to Order and Roll Call	The Arts Commission meeting was convened by the Acting Chair at 5:00 pm, City Councilor's Conference Room. A quorum was declared by roll call.	Page 2
Approval of Agenda	<i>Ms. Pedersen moved to approve the agenda as amended to include 3b, Introduction of New Members, second by Mr. Gomez, motion carried by unanimous voice vote.</i>	Page 2
Approval of November 12, 2013	Corrections: Ms. Penelope Hunter-Sticbel and Ms. Kathleen Ritch names were not spelled correctly when referenced in the Index and Minutes. <i>Ms. Pedersen moved to approve the minutes as amended, second by Ms. Sakiestewa, motion carried by unanimous voice vote.</i>	Page 2
Report of Director Introduction of Anna Blyth 2014 Meeting Schedule	<i>Informational, no formal action</i>	Page 2-3
Reports and Updates Artist's Table Report 2013 Work Plan Accomplishments 2014 Work Plan Update	Informational, no formal action	Page 3-4
Event Evaluations	Informational	Page 5
Adjournment	There being no further business to come before the Arts Commission, the meeting was adjourned at 5:40 pm.	Page 5
Signature Page		Page 5

ARTS COMMISSION
Monday, January 13, 2014 – 5:00p.m. – 5:40 p.m.
City Councilor’s Conference Room, Santa Fe, NM

MINUTES

1. ROLL CALL

The meeting of the Arts Commission was convened by the Acting Chair at 5:00 pm, City Councilor’s Conference Room, Santa Fe, New Mexico. A quorum was present at time of roll call.

Present:

Donna Scheer, Acting Chair
Sandra Deitch
Ramona Sakiestewa
Anne Pedersen
Gabe Gomez
Todd Lovato
Penelope Hunter-Stiebel
Kathleen Ritch

Not Present

Kirk Ellis, Chair, Excused

2. APPROVAL OF AGENDA

Amendment to Agenda: 3b – Introduction of New Members

Ms. Pedersen moved to approve the amended agenda to include 3B, Introduction of new members, second by Mr. Gomez, motion carried by unanimous voice vote.

3. INTRODUCTION OF BOARD MEMBERS AND GUESTS

Chair Deitch welcomed and introduced Ms. Penelope Hunter-Stiebel and Ms. Kathleen Ritch to the Arts Commission.

4. APPROVAL OF MINUTES FROM NOVEMBER 12, 2013

Corrections:

Ms. Penelope Hunter-Stiebel and Ms. Kathleen Ritch names were not spelled correctly when referenced in the Index and Minutes.

Ms. Pedersen moved to approve the minutes as amended, second by Ms. Sakiestewa, motion carried by unanimous voice vote.

5. Report of Director

Welcome to Anna Blyth, Program Planner with the City of Santa Fe Arts Commission. Anna came from New Mexico Arts where she worked for more than 10 years in a variety of capacities including Public Arts, Public Information Officer and Grants Coordinator. She brings a lot of

experience and tremendous amount of familiarity with our current Grant contacts. She was also responsible for leading their conversion to the same on-line grant system that the Arts Commission will be going to. Ms. Blyth is very excited to be a part of the Arts Commission and is looking forward to the launch of the on-line system. The new grant system is really robust; it will be great for grantees as they will be able to manage their grants and other capacities.

Ms. Garcia y Griego distributed an updated Arts Commission staff and commissioner list and the 2014 Meeting Schedule. All monthly meetings are held at 5:00 pm.

January 13, 2014	April 14, 2014	July 14, 2014	October 14, 2014
February 10, 2014	May 12, 2014	August 11, 2014	November 11, 2014
March 10, 2014	June 9, 2014	September 8, 2014	December 8, 2014

Special Meetings and Events:

April 25, 2014 – Grant Application Reviews (all day)	April 28, 2014 – Grant Application Reviews (all day)	September 19, 2014 – Judging of “Common Ground” Art Prize & Exhibit	October 17, 2014 – Recipient Reception, Mayor’s Awards for Excellence in the Arts	October 23, 2014 – Mayor’s Awards for Excellence in the Arts
--	--	---	---	--

Ms. Garcia y Griego expressed her thanks to the Commissioners for responding on the Grantee Review dates.

Ms. Sakiestewa suggested that the opening date for the Community Gallery also be set on the calendar.

6. Reports and Updates

a) Report on Artist’s Table, Ramona Sakiestewa

This will be the beginning of our 4th year doing the Artist’s Table and every year it gets more perfected. We have a significant amount of sponsors for the Valentine’s Dinner. This dinner was conceived by Sabrina Pratt and Ramona Sakiestewa as a way to generate income for the Community Gallery and Artist’s services. We partnered with Partners in Education which was Arts Works and was a part of the city programs. Money is shared and split as is the teamwork. One of the people on the team is Susan Curtis, Santa Fe Santa Fe School of Cooking. We have an opportunity to have a Chef; we partner with on an Artist, Debra and Joe Abeyta does an amazing 3-minute video. You buy dinner, a fabulous meal at the Santa Fe School of cooking you go to the Santa School of Cooking and you get a beautiful work of Art by the featured Artist at the dinner. The video is on the City website and on the School of Cooking website. There are many great partners supporting the Artist’s Table. The Valentine meal is more localized, we hope to get regional people and is the lesser expensive dinner. There is also a dinner in August which reaches to the Indian Market. We will be having Artist Phillip Vigil, a new young Artist from Jemez Pueblo. It was noted that the Valentine’s Dinner is \$150. (Exhibit A)

b) 2013 Work Plan Accomplishments

Ms. Garcia y Griego will send the commissioners by e-mail the work plan that they have been working under since 2010. The report which was from the last retreat will indicate the accomplishments listed by program area. It is important in the public eye for them to

know we won an award for the work with Public Works on both the Acequia St. Francis Drive/Zia trail underpass as well as the beautiful transit shelters. The MOU has been finished for Art Works and Partners in Education to start the transition. The Community Gallery has been a huge road of opportunity this year with the guest curator exhibits, NEA exhibits, the pop ups that are being done, enhanced professional development partnerships with the New Mexico Lawyers for the Arts, College of Santa Fe and our Creative Tourism. We continue to be involved internationally; we have been involved through Creative Cities with a number of visits throughout the year. Our biggest accomplishment is that they have improved their capacity and raised the quality of those visits. The Arts Commission participates in UNESCO which is Creative Cities – they are a city with folk art and design. We were the second city in the world to be admitted to the network and the first in North America and we are the only city that has a dual designation. We have also been participating in an intangible cultural heritage network that is intangible. It has provided interesting opportunities for travel and exchanges. Sister Cities was started under the President Carter administration; we have 9 sister cities currently and a separate committee oversees that. We have hosted two students from Japan as artisans. Santa Fe Creative Tourism is our website that serves information on workshops and demonstrations. Artist's have reported a 54% increase in their generation of income this last year from the Santa Fe Creative Tourism we now have a total of 235 participating Artist's. We are transitioning the grant program to an on line system which is huge for the applicants and reviewers as well as decreasing the amount of staff time spent on collateral. We have raised the caliber of the Mayor's Awards, increased the number of nominations, the quality of Common Ground and the table sponsorship is notable. The new office space at the convention center for the Arts Commission staff will translate in to a \$40,000 annual savings in rent. It will increase their visibility in the community and creating efficiencies.

c) 2014 Work Plan Update

One of the things we did not accomplish prior to the end of the work plan was a strategic planning process. Ms. Garcia y Griego proposed a Bridge Plan, (Exhibit B) which will pick up on the goals and objectives that were in the work plan and action steps. This will lead in to a strategic planning process in the summer which will need to be comprehensive to include constituent meetings, focus groups, meeting with Councilors and evaluating program finances and community needs in a way that we haven't not done since 2006. This guideline is to assist for review. The Bridge Plan does cross reference to the work plan. The items that are underlined are new. They are based on pressing needs (page 2).

ArtWorks, MOU that was developed was for 4 years, the status has changed to a straightforward contractor. We need to continue to support them for a period of time until they seek other funding. The current contract ends at the end of this fiscal year.

Everything else remains the same until you get to the last page Community Art Services: Need to evaluate the Poet Laureate program. John Davis' term ends at the end of the fiscal year.

Ms. Garcia y Griego recommended that the 2014 Bridge Plan be placed on the Agenda as an action item.

Ms. Sakiestewa complimented the work of the Director and staff.

7. Event Evaluations

Ramona Sakiestewa: Question about the favorite bus stops, some have gotten really small, is this an economic decision? Ms. Garcia y Griego said the initial step was to assess the needs at every location to assure they were utilized along with a right-of-way assessment. In many cases it was based on size of the stop for the right-of-way, they will continue to roll out in different shapes and size. Great program.

Todd Lovato: Opening of the Renaissance Goya Exhibit at Museum of Art, very well attended. This is the only stop for this show in the United States.

Penelope Hunter - Stiebel - Renaissance Goya Exhibit is extraordinary and of historical quality. What has been marvelous are the people looking at the works of art?

Gabe Gomez: Renaissance Goya Exhibit is extraordinary. Attended Snow Poem closing at Collected Works. Susan York and Arthur Z's poetry.

Sandra Deitch: Renaissance Goya Exhibit

Anne Pedersen - Creative Santa Fe Christmas Party. New Mexico Women for the Arts Dinner was very well attended. Aspen Santa Fe Nutcracker.

Kathleen Ritch: Echoed the same compliment of the bus stops. She has performed at the Cathedral. As member of the Desert Chorale noticed the many tourist that came to performances.


Donna Scheer: Attended the NDI Alumni party, "it is nice to see the young people come back now that they are older." Santa Fe Theater Guild is hosting a candidate forum for Mayoral Candidate to hear their thoughts in support of the Arts. Monday, January 27th - 7:00 pm - 9:00 pm at the Forum, next to the Library. (Mr. Gonzales and Ms. Bushee have been invited)

Visual Arts will have a forum on February 10th at the Center for Contemporary Arts - Arts and Cultural Organizations.


8. Adjournment

There being no further business to come before the Arts Commission, the meeting was adjourned by the Chair at 5:40 pm

Signature Page:



Donna Scheer, Acting Chair



Fran Lucero, Stenographer

At the Artist's Table

Exquisite dinners celebrating Santa Fe food, art and education

The Partners in Education Foundation for the Santa Fe Public Schools, the Santa Fe Arts Commission, and the Santa Fe School of Cooking are proud to present an exclusive dinner inspired by the most romantic holiday of the year.

In celebration of Valentine's Day, renowned artist Susan Contreras and acclaimed chef Michelle Roetzer will create an exquisite menu, discuss their inspirations, and present each guest with an original work of art by Ms. Contreras.

The Valentine's Day dinner, on Friday, Feb. 14, is \$150 per person. Proceeds benefit the Santa Fe Arts Commission's Artist Exhibit and Education Program, which nurtures and supports Santa Fe's unique artistic and cultural heritage, and the Partners in Education Foundation for the Santa Fe Public Schools, which raises funds to support Santa Fe's public school teachers and students.

At the Artist's Table 2014 Event Committee

Ramona Sakiestewa, artist
Chair

Kirk Ellis, City of Santa Fe Arts Commissioner
Honorary Co-chair

John Odell, Partners in Education Foundation
Board Chair
Honorary Co-chair

Debra Garcia y Griego, City of Santa Fe Arts
Commission

Ruthanne Greeley, Partners in Education Founda-
tion for the Santa Fe Public Schools

Susan Curtis, Santa Fe School of Cooking

Rod Lambert, Community Gallery

Sabrina Pratt, SVPratt Creative Strategies

Nicole Ammerman, Santa Fe School of Cooking

Sabrina Pratt
SVPratt Creative Strategies
svpratt1@gmail.com

As an Artist's Table sponsor, you will enjoy benefits that promote your company to a desirable audience of community leaders and visitors. Guests for the dinners have included prominent locals and collectors.



\$500 and up

- Logo on menu/program
- List on websites: Partners in Education, Santa Fe Arts Commission
- List on post-event ad in Pasatiempo
- List on ticket receipts
- Two Tickets

\$1,000 and up

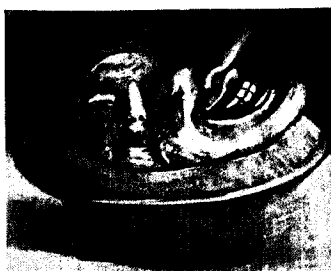
Same as above, except:

- Four tickets

\$2,500 and up

Same as above, except:

- Logo on websites
- Logo on post-event ad in Pasatiempo
- Logo on ticket receipts
- Six tickets



Susan Contreras

\$5,000 and up

Same as above except:

- Large logo on websites
- Large logo on post-event ad in Pasatiempo
- Large logo on ticket receipts
- Twelve tickets

Please make checks payable to:

Partners in Education
PO Box 23374
Santa Fe, NM 87502
505-474-0240

Thank you!



THE CITY OF SANTA FE
ARTS COMMISSION



Exhibit A

"GARCIA, DEBRA E." <degarcia@ci.santa-fe.nm.us>

January 13, 2014 3:09 PM

To: <rgreeley@sfpartersineducation.org>, "Susan Curtis" <scsfsc@nets.com>, <Ramona@ramonasakiestewa.com>,
"Laurel Savino" <laurel@laurelsavino.com>, "Sabrina Pratt " <svpratt1@gmail.com>

Press Release

10 Attachments, 2.8 MB



THE CITY OF SANTA FE



Partners
in Education
Foundation
for the Santa Fe Public Schools

FOR IMMEDIATE RELEASE
January 10, 2014

ARTS COMMISSION Contacts:

Ruthanne Greeley, Partners, Executive Director, 505-474-0240, rgreeley@sfpartersineducation.org

Debra Garcia y Griego, Arts Commission, Executive Director, 505-955-6707, degarcia@santafenm.gov

**FILL YOUR HEART IN SUPPORT OF EDUCATION AND THE ARTS IN SANTA FE
THE SECOND ANNUAL VALENTINE'S DAY "AT THE ARTIST'S TABLE"
AN INTIMATE EVENING OF FINE ART, CUISINE, AND CONVERSATION
FEATURING ARTIST SUSAN CONTRERAS AND CHEF MICHELLE ROETZER**

Santa Fe, New Mexico – Share your love this Valentine's Day and join The Partners in Education Foundation for the Santa Fe Public Schools, City of Santa Fe Arts Commission and Santa Fe School of Cooking for the second annual Valentine's Day "At the Artist's Table" event. Celebrate fine art, outstanding cuisine and great conversation during an intimate evening in support of Santa Fe's youth and the arts on Friday, February 14, 2014, 6:00 to 9:00 p.m., at the Santa Fe School of Cooking, 125 North Guadalupe St.

Hosted at the renowned [Santa Fe School of Cooking](#), do not miss this Valentine's Day event which features the work of local painter Susan Contreras and a one-of-a-kind meal prepared especially for the evening by Master Chef Michelle Roetzer. Contreras and Roetzer will lead an evening of creative conversation where visual arts and fine dining converge to fill your heart and senses. Contreras will speak about her creative process. Each guest will receive a signed Contreras' print created exclusively for the event, featuring her unique imagery of clowns and masks. Roetzer will personally guide the evening's meal, course-by-course, explaining how Contreras' vivid colors and signature style inspired the menu. The menu includes green chile and goat cheese stuffed chalupas, red tortilla soup, chile en *nogada*, seabass al la Veracruzana and saffron poached pears, along with wine pairings from Arroyo Vino. "At the Artist's Table" ticket holders also receive a very special 10% discount on rooms at La Fonda on the Plaza.

This exclusive dinner is limited to 60 guests, ensuring outstanding food, quality service, and an intimate evening of conversation. Proceeds benefit the [Partners in Education Foundation](#) for the Santa Fe Public Schools, which raises funds to support Santa Fe public school teachers and students, and the [City of Santa Fe Arts Commission's](#) Artist Exhibit and Education Program, which nurtures and supports Santa Fe's unique artistic and cultural heritage. Learn more at <http://www.attheartiststable.org/>.

Tickets for this special "At the Artist's Table," event are \$300 per couple or \$175 per person. Call 505-474-0240 or visit the [website](#) to make your reservations.

For more information or to purchase tickets, call Partners in Education at 505-474-0240.

###

"At the Artist Table" Exclusive Valentine's Dinner Menu

Starters

Chaplupas stuffed with green chile and goat cheese; butternut squash empanadas

First Course

Red tortilla soup with savory pepita biscotti

Second Course

Chile en Nogada

Entrée

Seabass Veracruzana served with green rice and baby vegetables

Dessert

Saffron poached pears with salted caramel and almond cookies

Bios

Painter **Susan Contreras** uses masked characters as the focus of her narrative canvases. Their inherent transformative magical quality adds an unknown sense of strangeness and unpredictability in the work. Masks are the catalyst of her celebratory and often humorous work.

Born in Mexico City in 1952, Contreras received a degree in Photography from Brooks Institute and a BFA and an MFA Degree from the University of California, Santa Barbara in Fine Art. A month-long workshop with Nathan Oliveira propelled her into a full-time career as a painter. She has lived and worked as an artist in Santa Fe since 1982 with fellow painter and husband, Elias Rivera.

Chef **Michelle Roetzer** brings 26 years of experience to the stoves of the Santa Fe School of Cooking. Her experience began in the San Francisco Bay Area at the age of 14 rolling pasta for a family friend. She eventually rose to the position of Sous Chef in an upscale Northern Italian Ristorante at the age of 21.

In 1996, she returned to her hometown of El Paso, TX and became Executive Chef of Café Central for 7 years. In 2003, she was the Chef De Cuisine for the Professional Golf Association Champions Dinner in Rochester, NY and has cooked for numerous notables including presidents George H.W. Bush, Bill Clinton, Al Gore and Vicente Fox of Mexico. She moved to Santa Fe in 2003 and is currently the lead instructor for Santa Fe Community College's Culinary Arts program and a freelance caterer for several local catering companies. In her spare time, she is a student of Political Science at College of Santa Fe, windsurfs, snow skis, mountain bikes, gardens and mentors young chefs.



THE CITY OF SANTA FE
ARTS COMMISSION

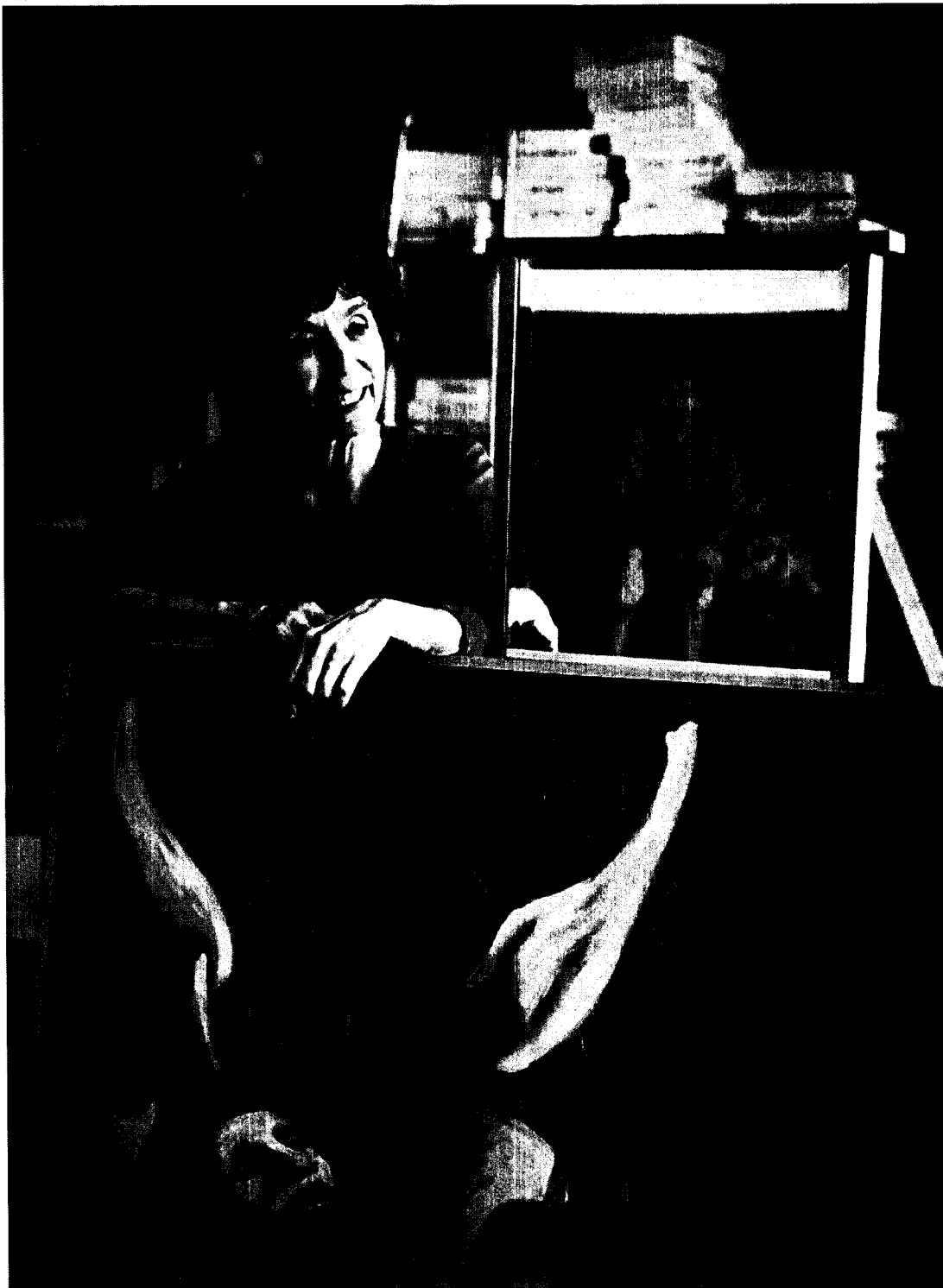
Celebrating 25 years of supporting the arts in Santa Fe.

Debra Garcia y Griego
Director
Arts Commission
201 West Marcy Street (inside the Santa Fe Community Convention Center)
PO Box 909
Santa Fe, NM 87504-0909
505.955.6707 tel/505.955.6671 fax
degarcia@ci.santa-fe.nm.us
www.SantaFeArtsCommission.org





[pressrelease...pdf \(165 KB\)](#)



2014 Bridge Plan

In December 2009, the City Council approved the Arts Commission 2010-2013 Work Plan. Following several years of unprecedented growth, the vision for the Work Plan focused on preserving and improving the core programming that best serves the community, artists, and as well as arts and cultural organizations. The fundamental belief of the Work Plan was that, more than ever, the Arts Commission's activities needed to become rooted in sustaining its core programs, while deepening their impact on the community.

Overall, the Work Plan has been implemented with a great degree of success. As with any plan, changes were made to accommodate the realities of implementation and a changing environment. In particular, the final eighteen months of the plan period saw significant changes. Despite the obstacles during this time, the Arts Commission has continued to implement the Work Plan's initiatives and embrace unforeseen opportunities.

With a significant transition completed and staffing returning to normal levels, it is time for the Arts Commission to undertake a comprehensive strategic planning process. This will be a thoughtful, diligent, and efficient planning process. In the interim, the Arts Commission will follow the 2014 Bridge Plan. The Bridge Plan completes some of the strategies of the Work Plan, while addressing several timely items.

Goals and Objectives

Goal #1: Community-wide Involvement in the Arts

Maintain and market a range of programs and services that engage the community as a whole, benefit artists of all career stages, and activate local arts and cultural groups.

Goal #2: Arts and Cultural Sustainability

Promote opportunities, programming and practices that emphasize generating long-term sustainability for Santa Fe's arts and cultural resources.

Goal #3: Maintain Organizational Effectiveness

Preserve the quality of current programs and services within available financial and human resources, while building capacity to meet future needs and growth.

Exhibit B

Bridge Plan

Art in Public Places Program

Increase stewardship of the permanent public art collection.

- a. Pursue curatorial and conservation internship opportunities through local colleges to document and assess the collection.
- b. Explore the national trend of revitalizing and reinvigorating existing public artworks through reinterpretation, adoptions and rededication programs to determine feasibility of implementing a similar program locally.
- c. Research and develop policies and procedures for de-accessioning.

ArtWorks

Evaluate future support of ArtWorks activities.

Community Gallery

Increase the direct and indirect sale of artwork.

- a. Further develop the small works section of the Gallery, offering unique work that sells well.
- b. Work with artists who submit portfolios to the Gallery on ideas for the sale of their art.
- c. Develop interesting angles for the media and events for the public to garner attention and establish the Gallery as a good source of work by local artists.

Serve as a resource for the professional advancement of local artists and artisans.

- a. Expand artist professional training programming.

Continue to develop administrative systems that optimize program effectiveness with reasonable demands on human resources.

- a. Maintain practical timelines for scheduling programming to ensure realistic planning and proper implementation.
- b. Maximize volunteer resources and network opportunities to reduce impact on staff time.
- c. Further digitize administrative functions.

Creative Tourism & Economic Innovation Initiative

Advance Creative Tourism initiatives through strategic partnerships with other City agencies.

- a. Pursue further collaboration with the Santa Fe Convention & Visitors' Bureau to promote Creative Tourism offerings in key markets.
- b. Share resources to enhance effectiveness of all programs.

Sister Cities

Strengthen program administration and operations.

- a. Increase public and media relations activities.
- b. Define Committee roles, responsibilities and tasks through a committee-specific work plan.

Funding of Public Arts Activities

Continue to refine funding program administration.

- a. Outreach to new and emerging organizations and activities through technical assistance.
- b. Build upon streamlined application to further refine the funding process for greater staff, grant panel and Arts Commissioner review efficiency.
- c. Increase pool of qualified panel reviewers through Arts Commission and staff networks; leverage commitment of existing reviewer pool for service on other committees.

Community Arts Services

Assist with advocacy efforts that will maintain and improve arts programming for the community.

- a. Build enhanced communication systems that increase the ease and speed with which important advocacy information and issues can be shared.
- b. Routinely update the Arts Commissioners and committee members about emerging advocacy issues.
- c. Advise the Mayor and City Council of advocacy efforts and, as appropriate, secure their participation.

Increase the visibility of artists and arts organizations, administrators and contributors in the community through improved annual programs.

- a. Assess the long-term viability of the Poet Laureate program to determine future direction of the program.

Initiate a strategic planning process to assess constituent needs and resources in order to identify goals, objectives and strategies for the future.