

**CITY OF SANTA FE
AGUA FRIA / SOUTH MEADOWS
INTERSECTION IMPROVEMENTS
CIP 853-C**



Public Meeting

City of Santa Fe

Santa Fe Engineering Consultants, LLC

February 26, 2019

Introduction



City of Santa Fe – Public Works
John Romero, P. E., Engineer Division Director
Sarah Anderson, P.E., Section Supervisor
Michelle Martinez, Project Administrator



Santa Fe Engineering Consultants, LLC.
Michael Gomez, P.E., Traffic Engineer
Eric Cornelius, P.E., Design Engineer
Bernadette Scargall, Project Manager



Ecosphere
Jerusha Rawlings, PhD, Biologist

Purpose of Public Meeting



Review the project
and why it is
happening



Coordination with
other projects



Obtain input

Project Goals



Address Traffic Issues at Agua
Fria / South Meadows
Intersection



Improve safety per
Santa Fe Metropolitan Plans
as a short term priority



Improve pedestrian access
per Americans with
Disabilities Act (ADA)

Project Funding

Funding for the preferred alternative will be from:

- 2015 and 2018 Capital Outlay Funds - NM State Legislature - \$125,000
- Municipal Arterial Program Funds – New Mexico Department of Transportation - \$440,750
- Developer Impact Fees – City of Santa Fe
Remaining funds

Project Area and Location



Project Limits



What We Have Done So Far



Obtained
topographic mapping



Documented Existing
Conditions

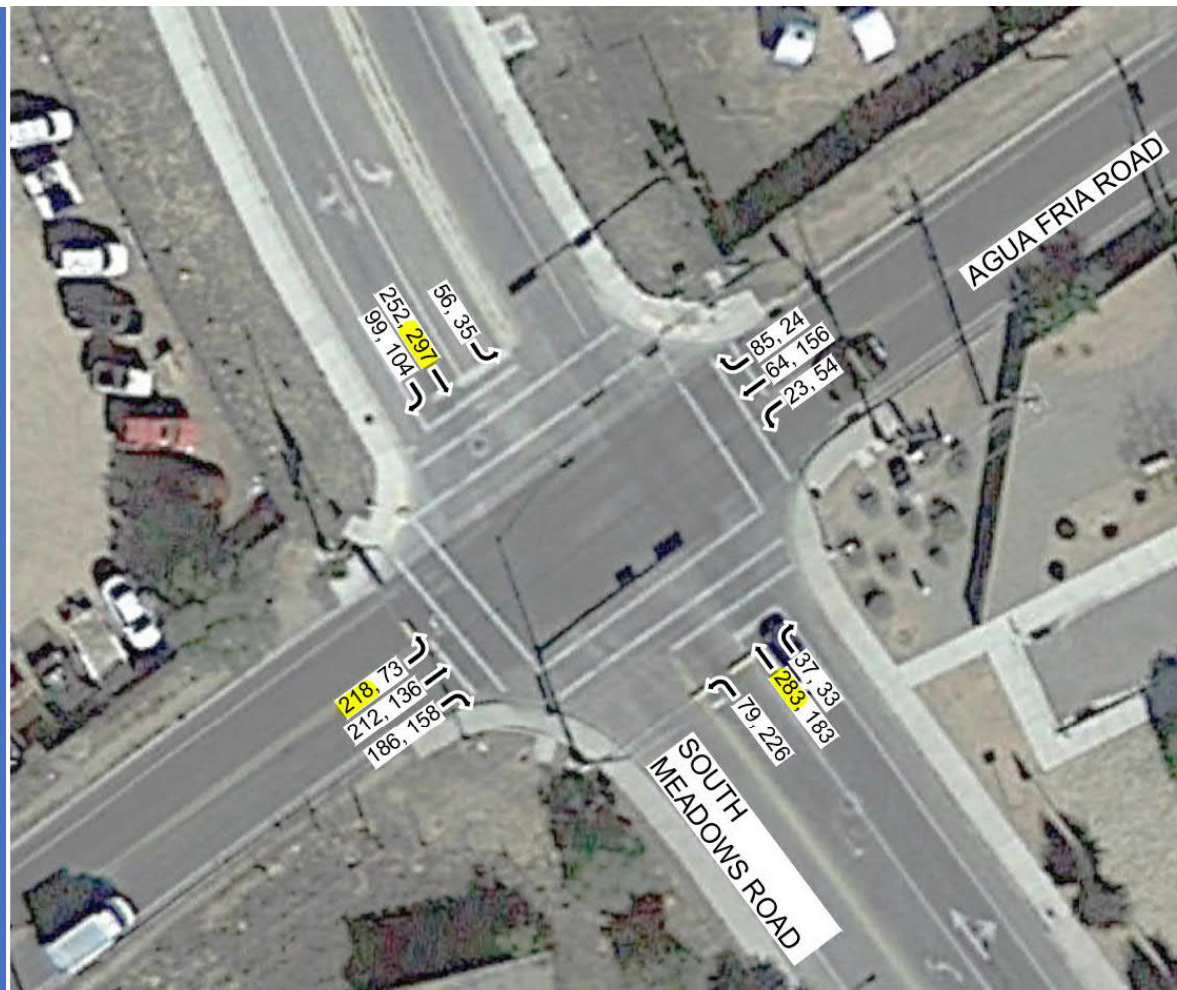


Conducted Traffic
Counts



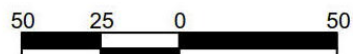
Prepared
Alternatives For
Consideration

Existing Traffic Volumes



REFERENCE:
GOOGLE EARTH PRO
IMAGE DATE 6-10-2017

PEAK HOURS FOR TRAFFIC COUNT DATED November 15, 2018	
AM	PM
7:15 AM to 8:15 AM	4:30 to 5:30 PM



LEGEND

DENOTES PEAK HOUR
TRAFFIC VOLUME
AM, PM

11, 25

DENOTES MOVEMENT



EXISTING TRAFFIC
VOLUMES
AGUA FRIA ROAD &
SOUTH MEADOWS ROAD



OBSERVED AM QUEUEING MAP

SFE Santa Fe Engineering
 Consultants, LLC
 1599 St. Francis Drive, Suite B
 Santa Fe, N.M. 87505
 (505) 982-2845 Fax: (505) 982-2841
<http://www.SFENG.COM>

Crash Data

CRASHES NEAR THE INTERSECTION OF AGUA FRIA ROAD AND SOUTH MEADOWS ROAD, 2011 - 2016

FIGURE 1: CRASHES NEAR THE INTERSECTION OF AGUA FRIA ROAD AND SOUTH MEADOWS ROAD, 2011 - 2016

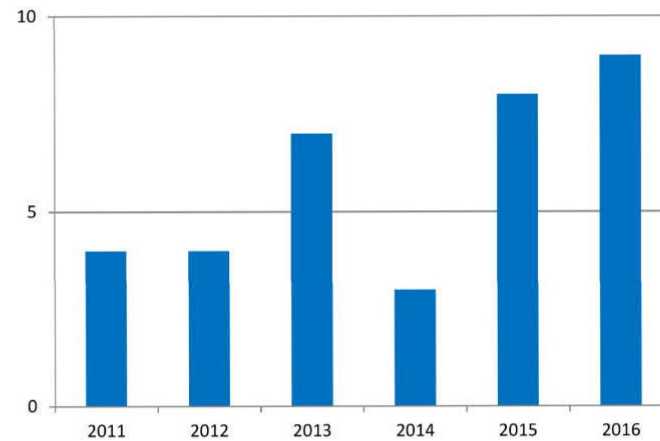


TABLE 1: CRASHES NEAR THE INTERSECTION OF AGUA FRIA ROAD AND SOUTH MEADOWS ROAD BY CRASH SEVERITY, 2011 - 2016

YEAR	FATAL CRASHES		INJURY CRASHES		PROPERTY DAMAGE ONLY CRASHES		TOTAL CRASHES	
	COUNT	PERCENT	COUNT	PERCENT	COUNT	PERCENT	COUNT	PERCENT
2011	0	0.0%	3	21.4%	1	4.8%	4	11.4%
2012	0	0.0%	2	14.3%	2	9.5%	4	11.4%
2013	0	0.0%	2	14.3%	5	23.8%	7	20.0%
2014	0	0.0%	1	7.1%	2	9.5%	3	8.6%
2015	0	0.0%	2	14.3%	6	28.6%	8	22.9%
2016	0	0.0%	4	28.6%	5	23.8%	9	25.7%
GRAND TOTAL	0	0.0%	14	100.0%	21	100.0%	35	100.0%

Crash Data

TABLE 2: PEOPLE IN CRASHES NEAR THE INTERSECTION OF AGUA FRIA ROAD AND SOUTH MEADOWS ROAD BY SEVERITY OF INJURY, 2011 - 2016

YEAR	FATALITIES		SUSPECTED SERIOUS INJURIES		SUSPECTED MINOR INJURIES		POSSIBLE INJURIES		NO APPARENT INJURIES		TOTAL PEOPLE IN CRASHES	
	COUNT	PERCENT	COUNT	PERCENT	COUNT	PERCENT	COUNT	PERCENT	COUNT	PERCENT	COUNT	PERCENT
2011	0	0.0%	0	0.0%	0	0.0%	3	25.0%	9	11.1%	12	12.6%
2012	0	0.0%	0	0.0%	0	0.0%	4	33.3%	16	19.8%	20	21.1%
2013	0	0.0%	0	0.0%	1	100.0%	2	16.7%	20	24.7%	23	24.2%
2014	0	0.0%	0	0.0%	0	0.0%	1	8.3%	6	7.4%	7	7.4%
2015	0	0.0%	0	0.0%	0	0.0%	2	16.7%	24	29.6%	26	27.4%
2016	0	0.0%	0	0.0%	1	0.0%	4	33.3%	22	27.2%	27	28.4%

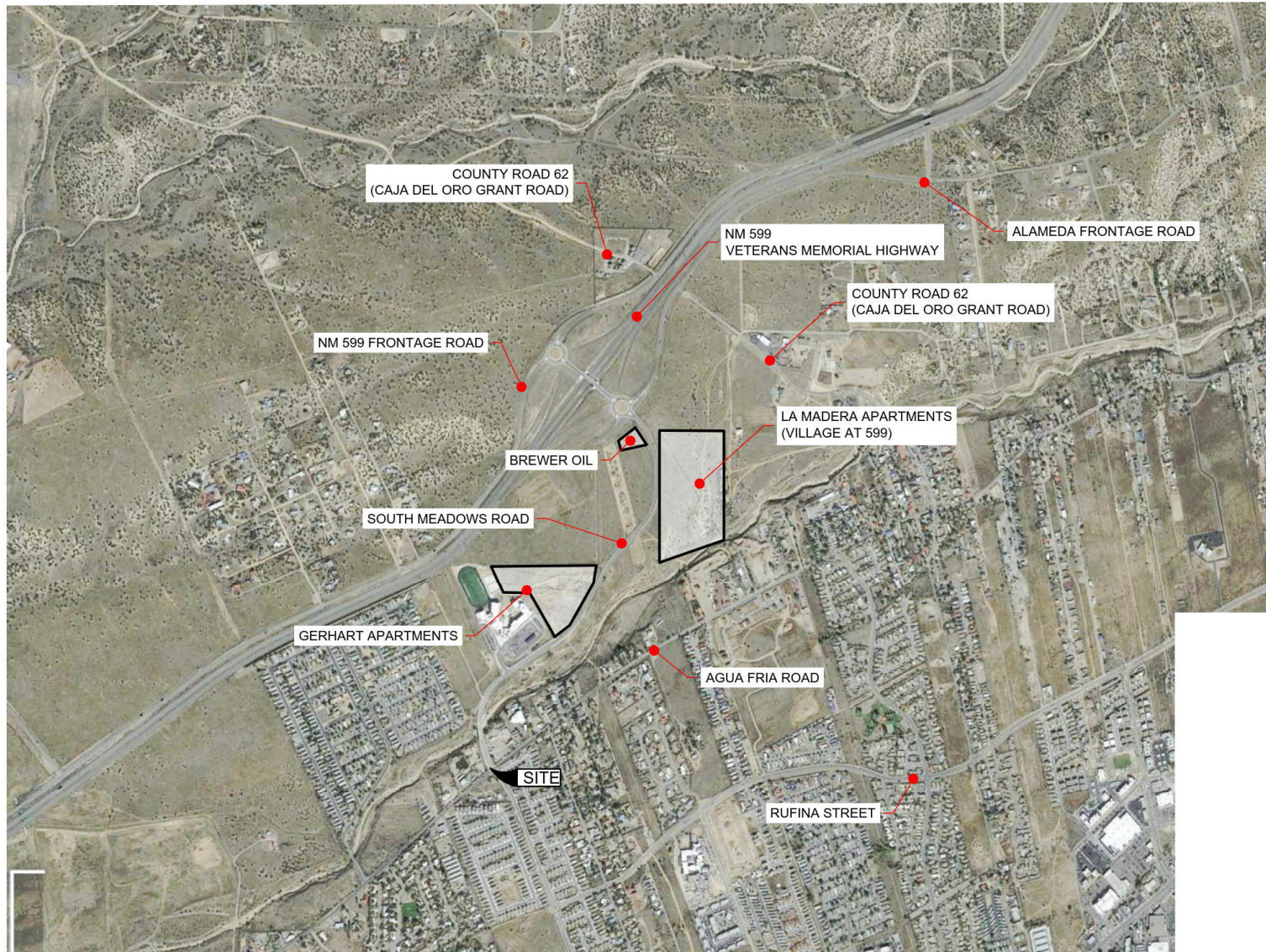
TABLE 3: CRASHES NEAR THE INTERSECTION OF AGUA FRIA ROAD AND SOUTH MEADOWS ROAD BY CRASH CLASSIFICATION, 2011 - 2016

CRASH CLASSIFICATION	2011	2012	2013	2014	2015	2016	6-YEAR TOTAL
OTHER VEHICLE	3	3	6	2	6	9	29
OTHER	1	1	1	1	2	0	6
GRAND TOTAL	4	4	7	3	8	9	35

TABLE 4: CRASHES NEAR THE INTERSECTION OF AGUA FRIA ROAD AND SOUTH MEADOWS ROAD BY TOP CONTRIBUTING FACTOR, 2011 - 2016

HIGHEST CONTRIBUTING FACTOR TO CRASH	2011	2012	2013	2014	2015	2016	6-YEAR TOTAL
FOLLOWING TOO CLOSELY	1	2	3	1	5	2	14
FAILED TO YIELD RIGHT OF WAY	1	1	2	0	1	1	6
OTHER	1	1	0	2	1	0	5
DRIVER INATTENTION	0	0	0	0	0	4	4
ALCOHOL/DRUG INVOLVED	1	0	1	0	0	1	3
MADE IMPROPER TURN	0	0	1	0	0	1	2
EXCESSIVE SPEED	0	0	0	0	1	0	1
GRAND TOTAL	4	4	7	3	8	9	35

Future Developments



Existing Conditions & Constraints



Traffic congestion



Long traffic backups impacting access and mobility



Safety deficiencies



Accident data



Right-of-Way



Environmental & Cultural investigations

Guiding Principles for Alternatives

- Improve capacity to traffic operations.
- Provide pedestrian and bicycle facilities to improve safety.
- Minimize tree removal.
- Minimize right of way acquisition.
- Minimize disruption to existing driveways.
- Minimize environmental impacts.
- Minimize utility relocations.
- Constructability.



Alternatives Considered

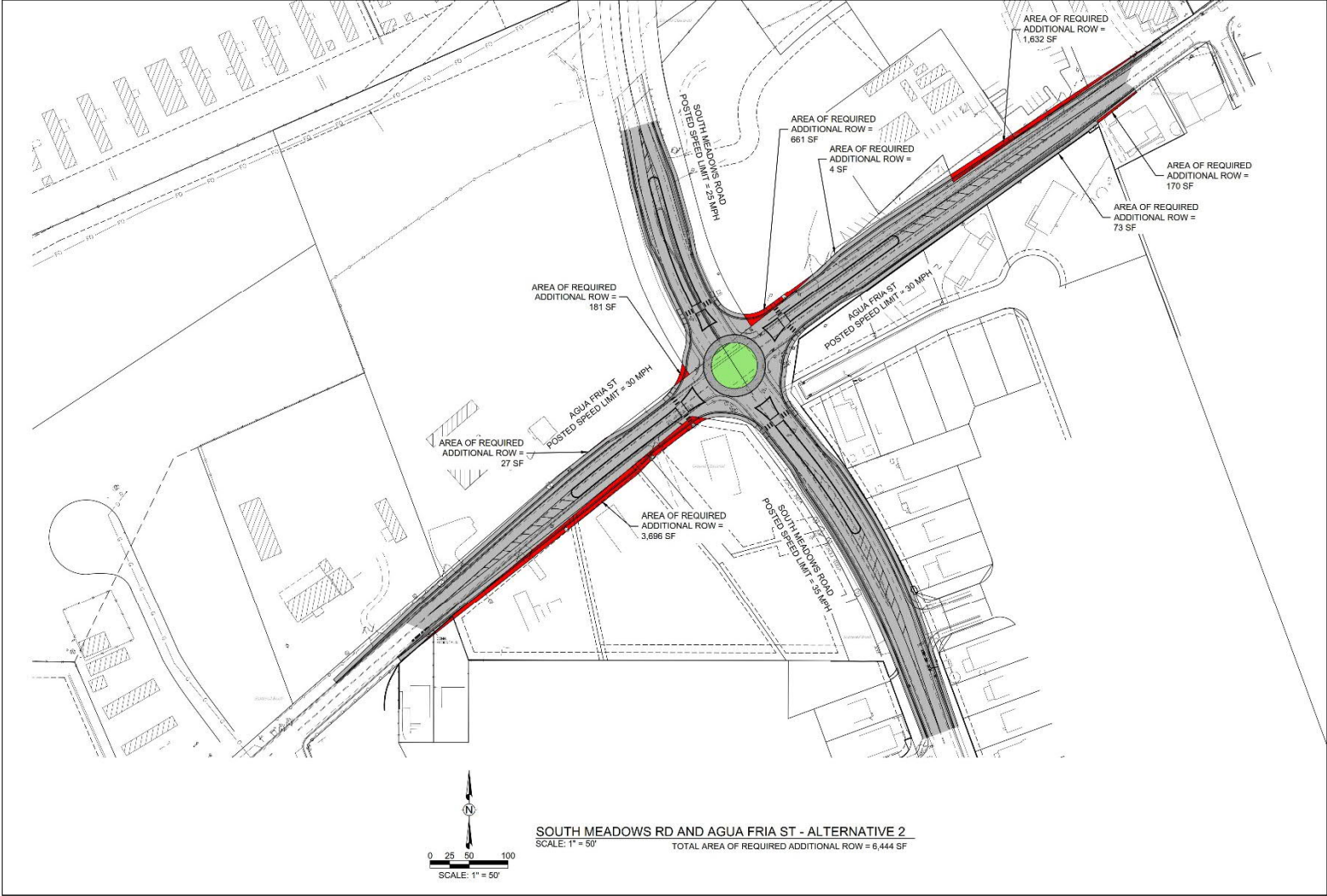
1. No build Alternative
2. Build a Roundabout
3. Improve existing Signalized Intersection

Alternative 1

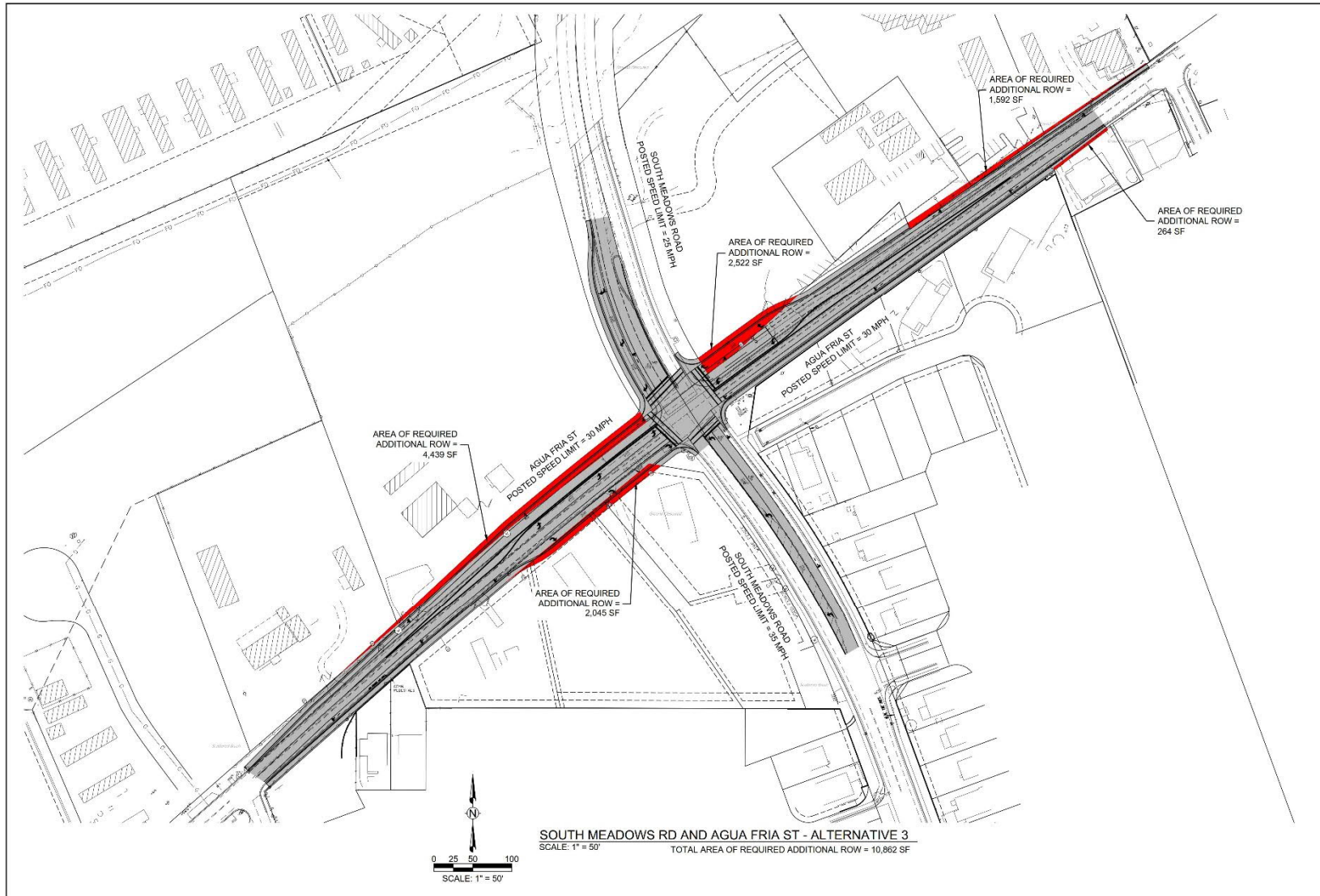
No Build

- Continued traffic congestion
- Continued long delays
- Increased crashes

Alternative 2



Alternative 3 – Preferred Alt



Environmental Concerns

- No Impacts to Cultural Resources
 - Area is in an archaeological review district and has been cleared
- No Impacts to Biological Resources
- No hazardous Materials

Environmental Concerns

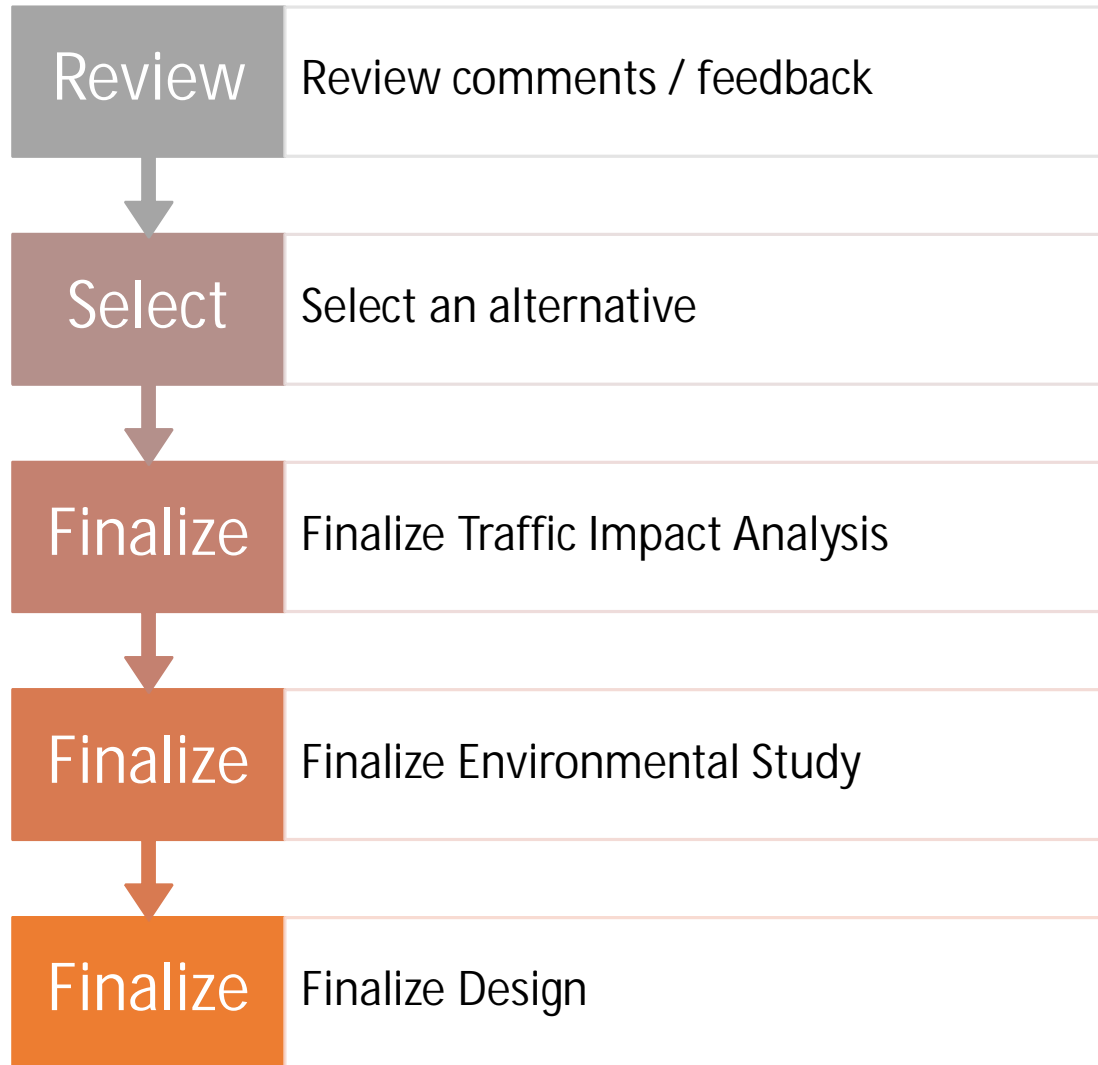
- Underground storage tanks, hazardous materials, and the Santa Fe River
 - Ecosphere reviewed environmental databases, aerial photography, and data provided by the New Mexico Environment Department (NMED) and other regulatory agencies.
 - Historical and existing facilities were reviewed for violations and releases – one release in 1994 was remediated and cleared by NMED in 2002.
 - It is highly unlikely that soil or groundwater in the project area is contaminated by hazardous materials.
 - Best management practices should be implemented during construction to protect the Santa Fe River from sediment releases into the channel.

Environmental Concerns

- Cutting trees during bird mating season

To avoid violation of the federal Migratory Bird Treaty Act, clearance of vegetation should take place outside the general migratory bird nesting season (April through August). If vegetation will be cleared within the nesting season, nest surveys should be conducted, and active nests avoided until the nestlings have fledged.

- Proposed construction would disturb less than the 2-acre threshold required for archaeological review. There are no known archaeological sites in the project area.



Next Steps

Current Project Schedule



Construction Spring 2020
(preliminary estimate)

School is not in session



Construction activities 3-4
month approximate



Depends on funding,
right-of-way acquisition,
and completion of
construction plans



Questions and Answers

Thank You!

**Your comments and concerns are
appreciated!**

For further comments or questions after the meeting contact:

City of Santa Fe Public Works

(505) 955-6931

Email comments to: mrmartinez1@santafenm.gov