



Engineered Netting Systems • Steel Pole Manufacturers

2933 16th Street
Bakersfield, CA 93301
Office: 661-631-1582
Fax: 661-3258-0813



15' High X 24' Long X 8' Wide Coastal Canopy Portable Litter Unit

ASSEMBLY INSTRUCTION BOOKLET

TOOLS NEEDED FOR ASSEMBLY



PARTS OF LITTER UNIT



1 Base



3 Canopy Legs – Left, Middle, Right



6 Large Horizontal Spreader Legs – 11'-3 1/2" Hole to Hole



3 Small Horizontal Spreader Legs – 5'-3" Hole to Hole



3 Front Support Legs – 13'-11" Hole to Hole



2 Lift Unit Support Legs – 2" Box Tube @ 8'-11 ½" Hole to Hole



Lift Unit – 5 Parts: 1 Frame, 2 Vertical Extensions, 2 Horizontal Extensions



2 Horizontal Extensions for Lift Unit

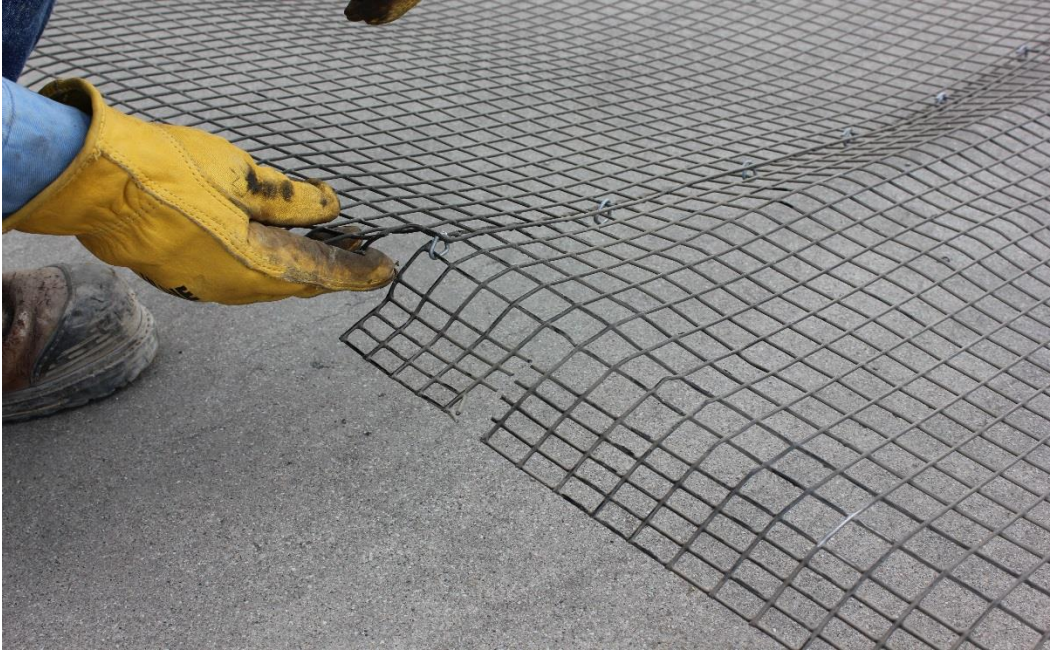
STEP 1 – Attach Canopy Legs to Back of Base



Step 2 – Attach Large Horizontal Spreader Legs to Canopy Legs



Step 3 – Cut & Assemble Wire Mesh. 3 Sections of 6’ High X 24.5’ Long for Back of Unit. Left & Right Sides of Unit are Pre-Cut. Hog Ring panels together.



Step 4 – Pull Wire Mesh over Frame



Step 5 – Attach Wire Mesh to Base Loops (Eyes) with Hog Rings.



Step 6 – Attach Wire Mesh to Top Horizontal Spreader with Hose Clamps @2' O/C



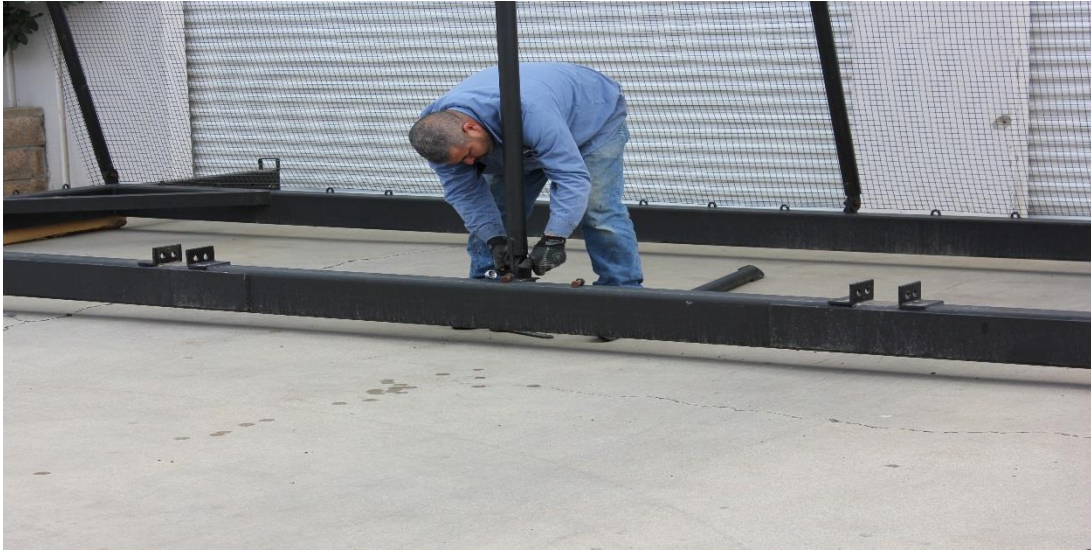
Step 7 – Raise Canopy & Attach Front Support Legs



Step 8 – Raise Canopy



Step 9 – Attach Front Support Legs to Base



Step 10 – Attach Small Spreader Legs to Canopy Legs & Front Support Legs



Step 11 – Attach Right & Left Wire Mesh Wings/Sides with Hose Clamps @ 3' O/C



Step 12 – Attach Remaining Hose Clamps on All Spreaders & Legs @ 3' OC



Step 13 – Assemble Lift Unit



Step 14 – Attach Lift Unit to Base





Step 15 – Attach Lift Unit Support Legs to Lift Unit & Base

