

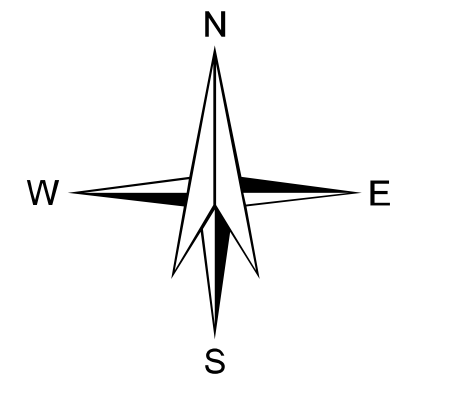
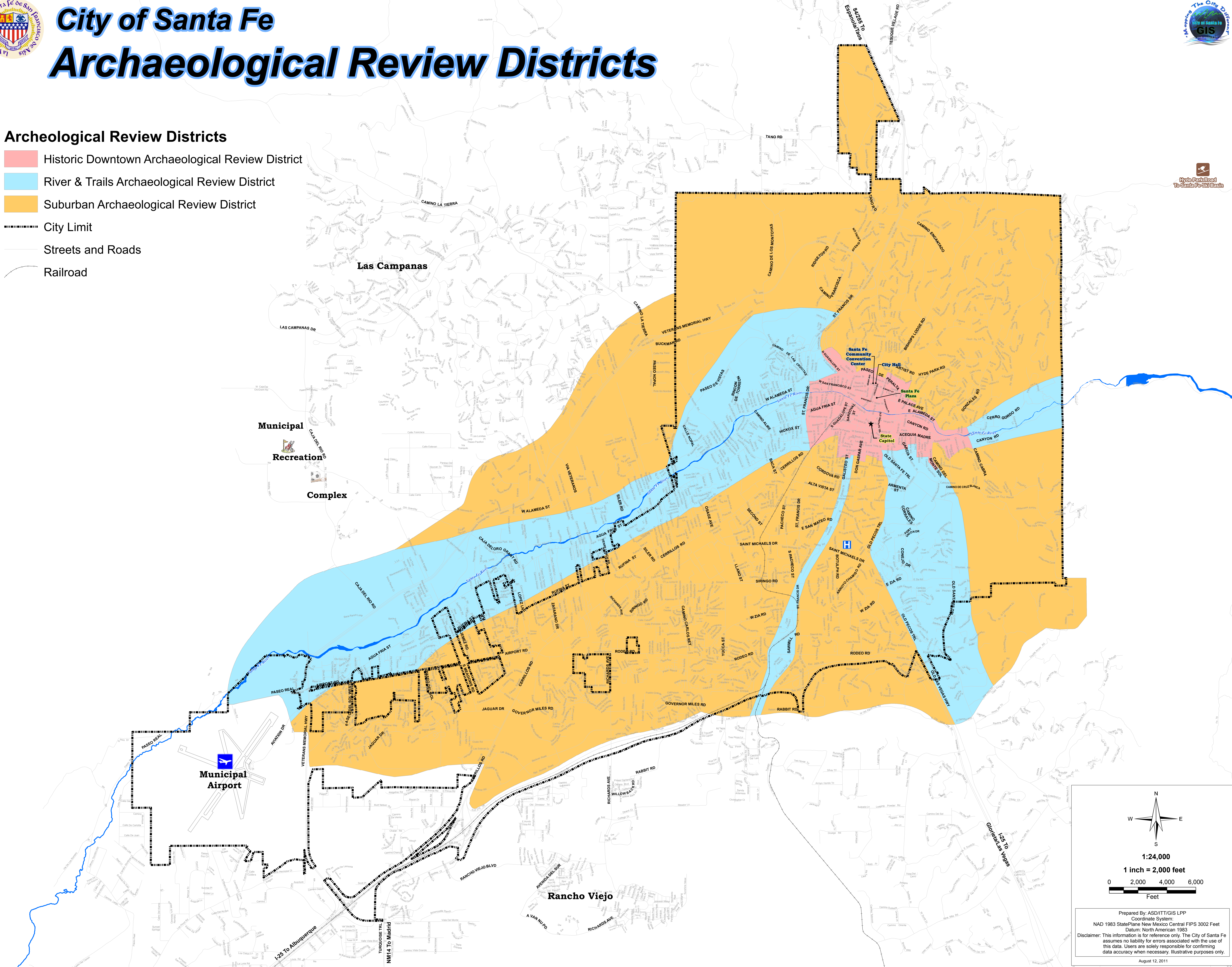


# City of Santa Fe Archaeological Review Districts



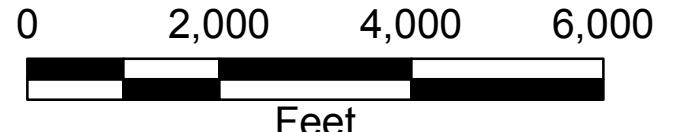
## Archeological Review Districts

- Historic Downtown Archaeological Review District
- River & Trails Archaeological Review District
- Suburban Archaeological Review District
- City Limit
- Streets and Roads
- Railroad



1:24,000

1 inch = 2,000 feet



Prepared By: ASD/IT/GIS LPP  
 Coordinate System:  
 NAD 1983 StatePlane New Mexico Central FIPS 3002 Feet  
 Datum: North American 1983  
 Disclaimer: This information is for reference only. The City of Santa Fe assumes no liability for errors associated with the use of this data. Users are solely responsible for confirming data accuracy when necessary. Illustrative purposes only.  
 August 12, 2011