



# City of Santa Fe





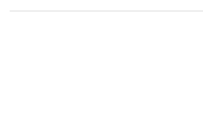

## Mountainous or Difficult Terrain

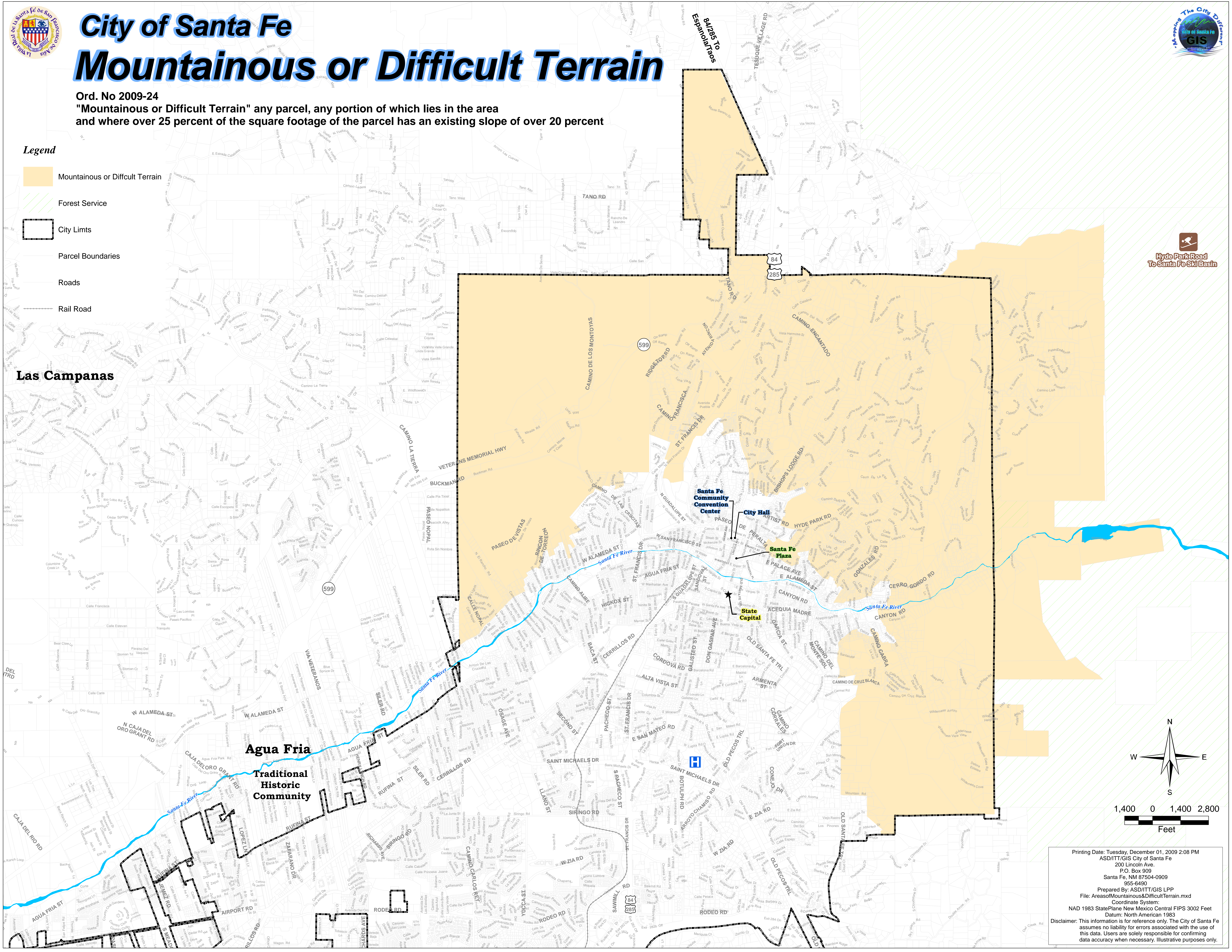


Ord. No 2009-24

"Mountainous or Difficult Terrain" any parcel, any portion of which lies in the area and where over 25 percent of the square footage of the parcel has an existing slope of over 20 percent

### Legend

-  Mountainous or Difficult Terrain
-  Forest Service
-  City Limits
-  Parcel Boundaries
-  Roads
-  Rail Road



Las Campanas

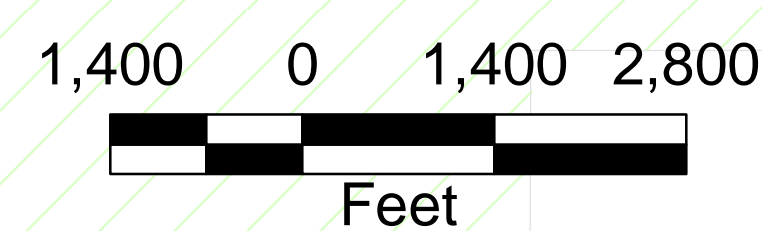
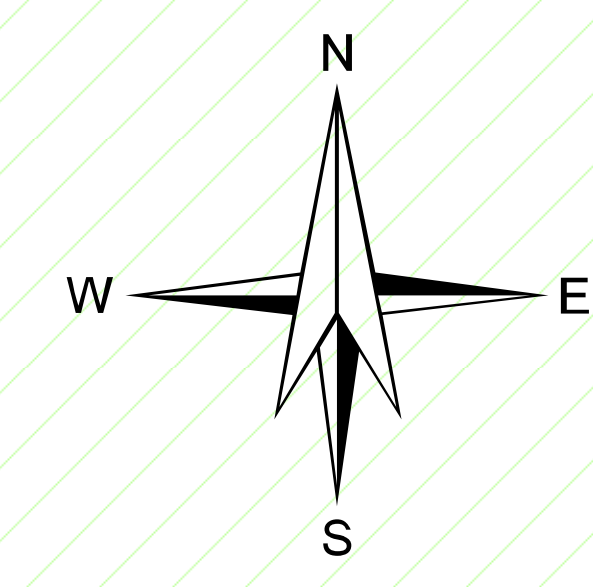
Agua Fria  
Traditional  
Historic  
Community

Santa Fe  
Community  
Convention  
Center

City Hall

Santa Fe  
Plaza

State  
Capital



Printing Date: Tuesday, December 01, 2009 2:08 PM  
 ASD/ITT/GIS City of Santa Fe  
 200 Lincoln Ave.  
 P.O. Box 909  
 Santa Fe, NM 87504-0909  
 955-6490  
 Prepared By: ASD/ITT/GIS LPP  
 File: AreasofMountainous&DifficultTerrain.mxd  
 Coordinate System:  
 NAD 1983 StatePlane New Mexico Central FIPS 3002 Feet  
 Datum: North American 1983  
 Disclaimer: This information is for reference only. The City of Santa Fe assumes no liability for errors associated with the use of this data. Users are solely responsible for confirming data accuracy when necessary. Illustrative purposes only.