

Section One

Railyard Maps

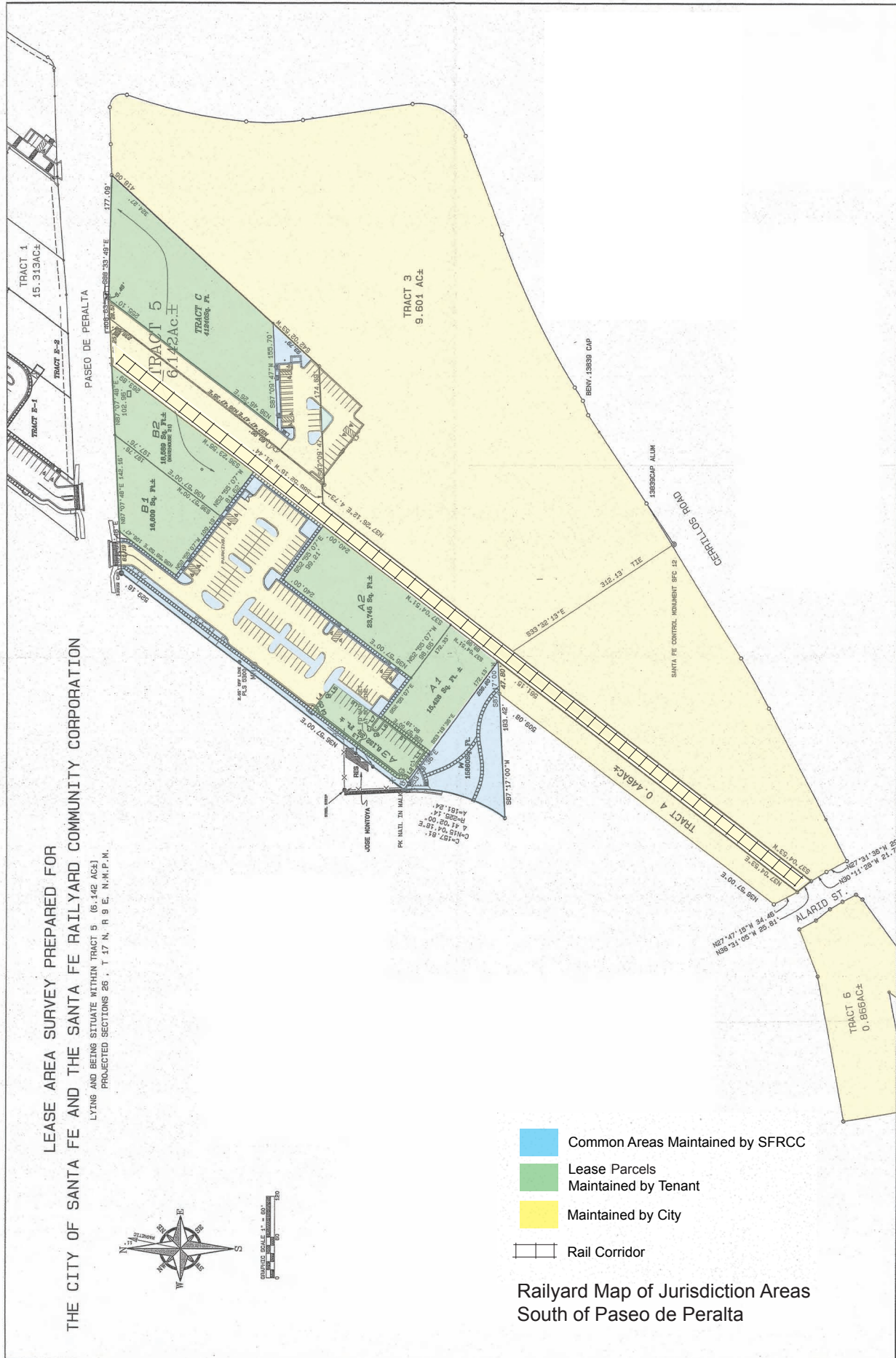
North and South of Paseo de Peralta,
including Park, Plaza and Alameda

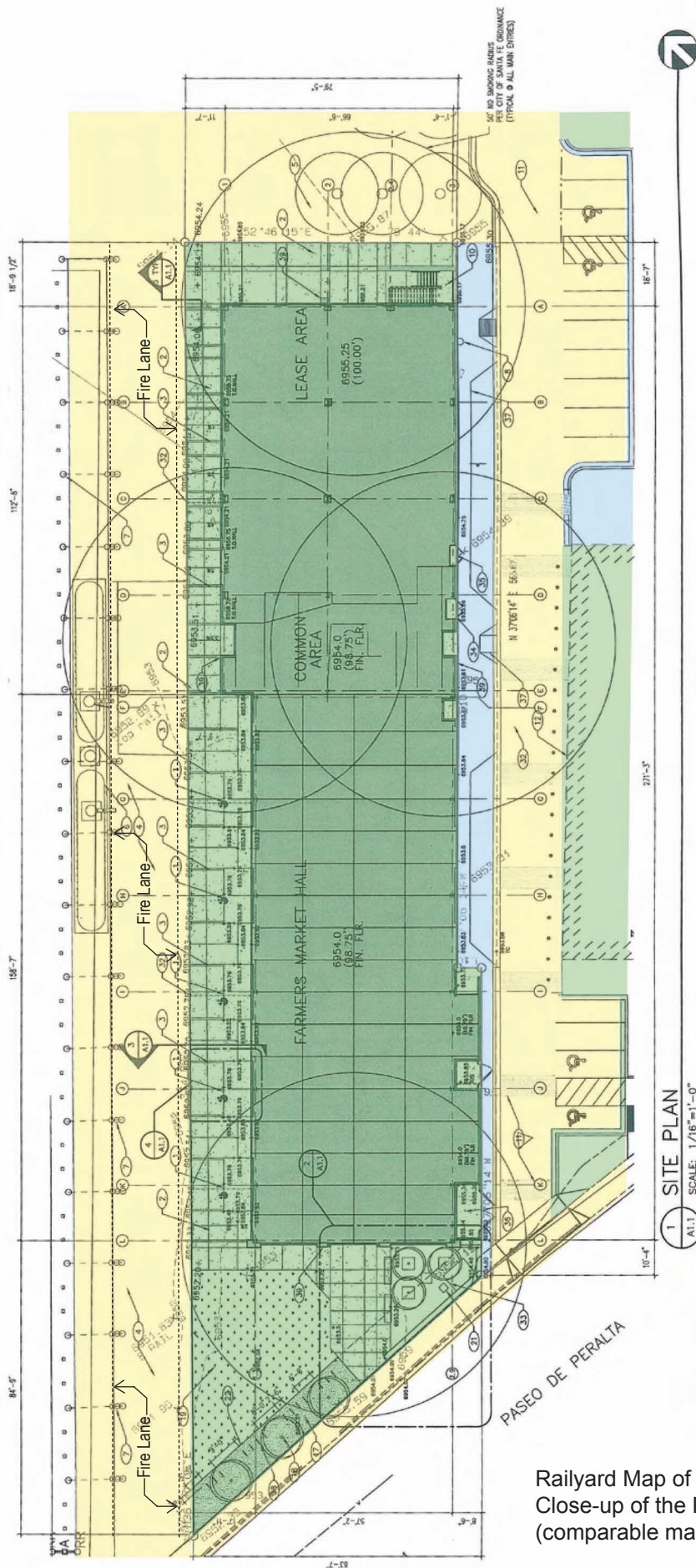




Entire Railyard with Area Names







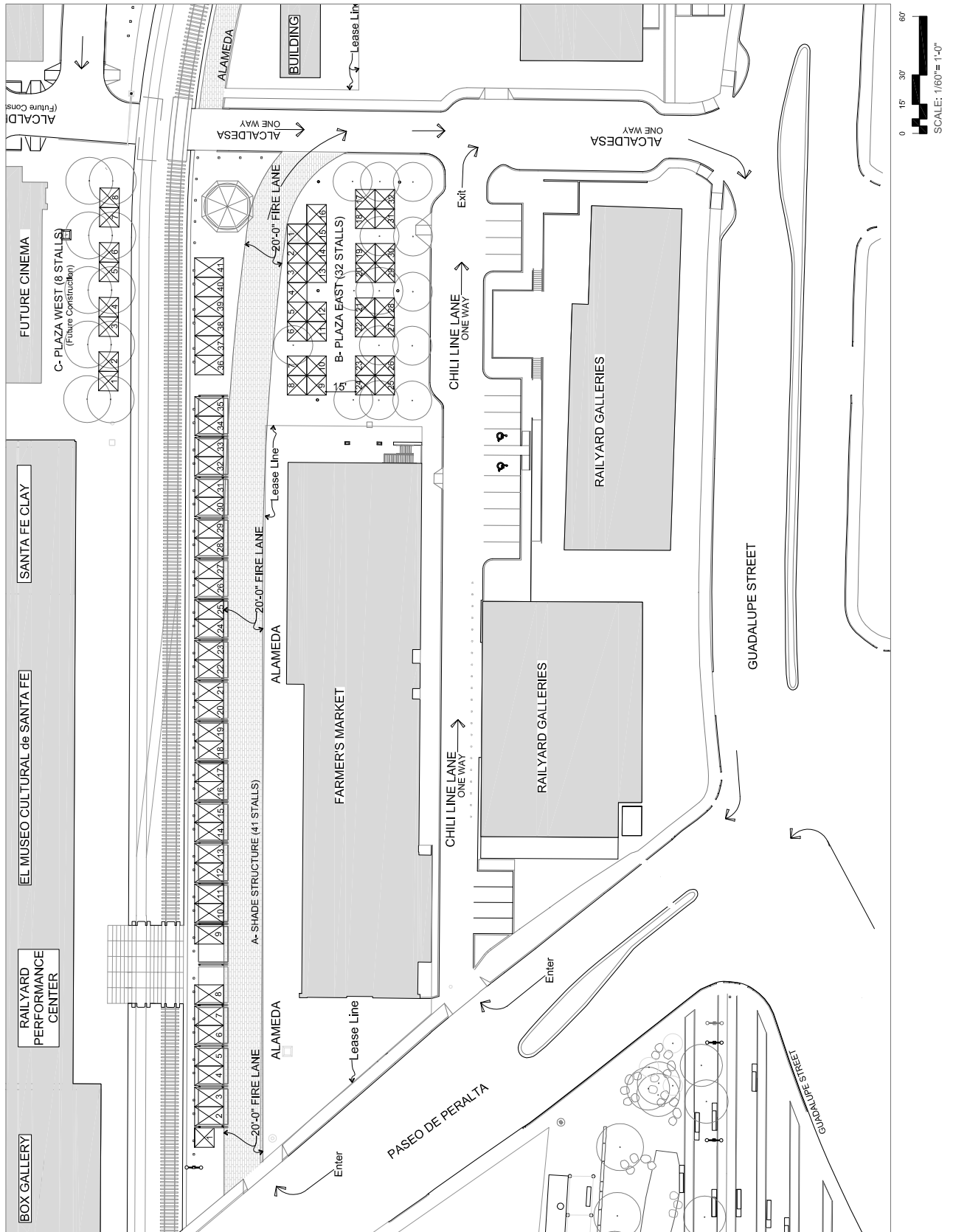
Railyard Map of Jurisdiction Areas
 Close-up of the Farmers Market Jurisdictions
 (comparable maps are available of other tenant areas)

**RAILYARD AREAS STALL LOCATIONS
FOR SPECIAL EVENTS, SEASONAL MARKETS, AND INDIVIDUAL FOOD VENDORS**

AREA	DESCRIPTION	# OF STALLS
A	Shade Structure (Area between tracks and Farmer's Market Bldg.) Stalls with and without trucks	41
B	Plaza East Stalls with and without trucks	32
C	Plaza West (Future Construction) (Adjacent to future cinema, without trucks)	8
D	Casitas Grove West (East of Market Station Building)	37
E	Casitas Grove East (West of Gross Kelly Building) Individual Food Vendors Only	2
F	Montezuma Pocket Park	10
G	Alameda South (Alameda South of Paseo de Peralta)	20
H	Ramada Entry	14
I	Park Ramada	25
J	Park Service Area	11
K	Open Field	13
H, I, J, K = 64 locations, however, no more than 50 stalls maximum		
	Maximum Allowable	213
*	Park - Individual Food Vendors in Addition to Stalls	TBD

Assumptions:

1. Stalls are 10' X 10' (except A and B which may include a truck stall). Shade Structure and Plaza are the only areas that accommodate trucks.
2. ADA clearances have been taken into consideration.
3. The stall locations and numbers reflect the maximum possible locations in designated Railyard public spaces, and do not guarantee availability. The allowable placement and number of stalls for an event will be determined by the SFRCC at its discretion based on availability of space and type of event proposed.
4. *Individual Food Vendor locations to be assigned on a case by case basis.



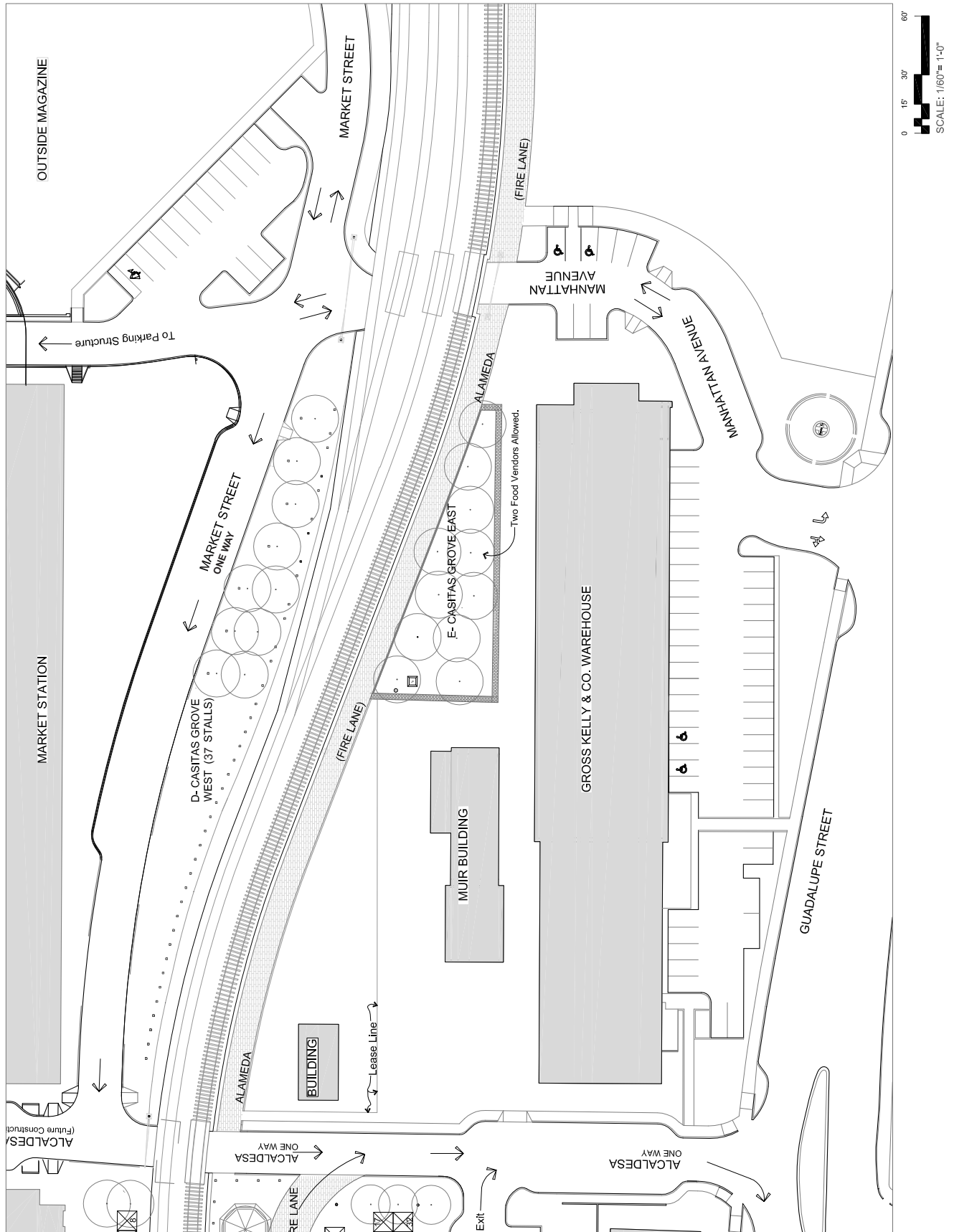
INDIVIDUAL AREA MAPS - SANTA FE RAILYARD AREAS A & B & C - Shade Structure + Plaza East + Plaza West

The stall locations and numbers reflect the maximum possible locations in designated Railyard public spaces, and do not guarantee availability. The allowable placement and number of stalls for your event will be determined by the SFRCC at its discretion based on availability of space, public health and safety, and type of event proposed.

Stall layout amended by order of City Fire Marshall, October 2009.

No blocking of fire lanes at any time.

(Pursuant to separate legal agreement: Farmer's Market stall layout varies from above map.)

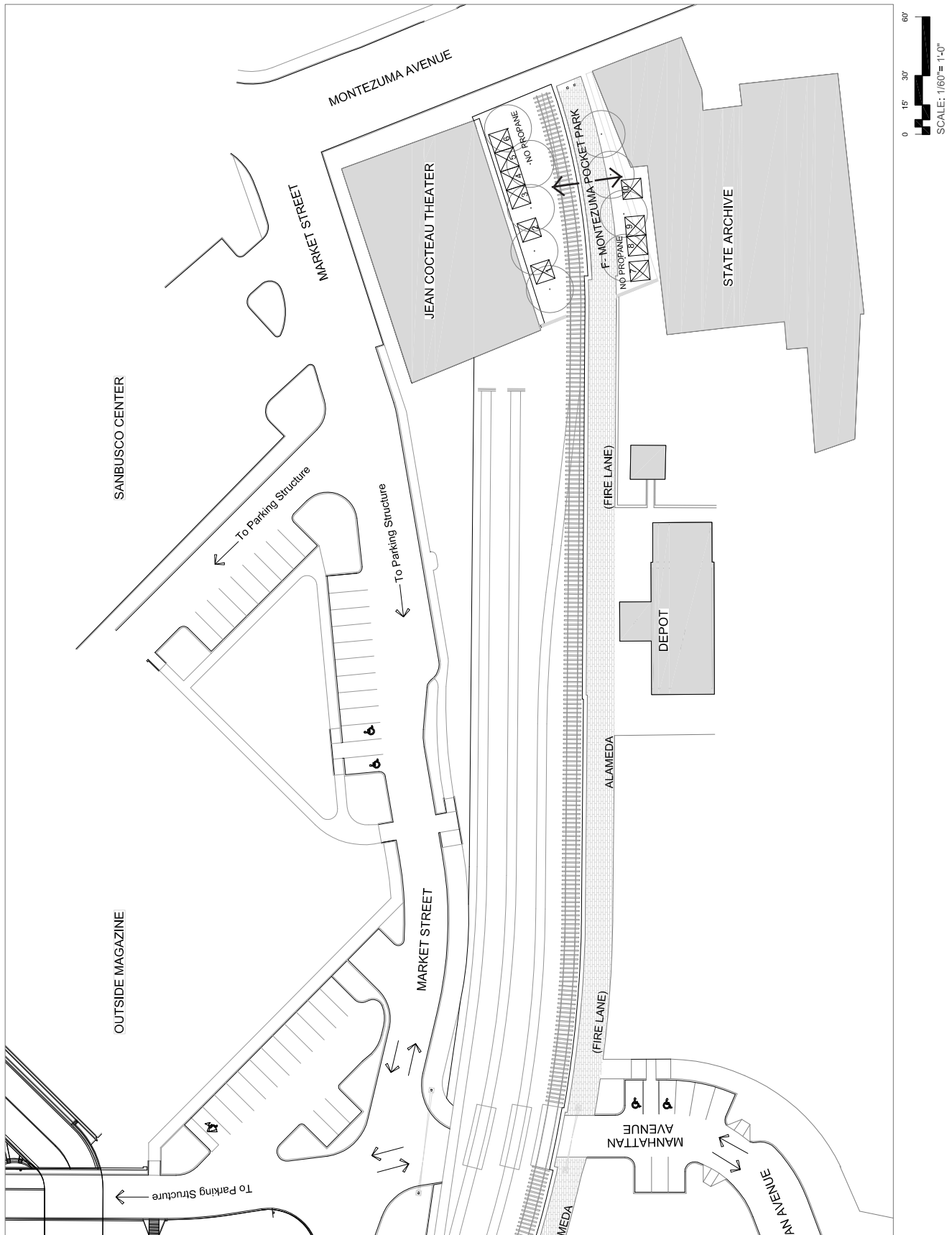


INDIVIDUAL AREA MAPS - SANTA FE RAILYARD AREAS D & E - Casitas Grove West + Casitas Grove East

The stall locations and numbers reflect the maximum possible locations in designated Railyard public spaces, and do not guarantee availability. The allowable placement and number of stalls for your event will be determined by the SFRCC at its discretion based on availability of space, public health and safety, and type of event proposed.

Stall layout amended by order of City Fire Marshall, October 2009.

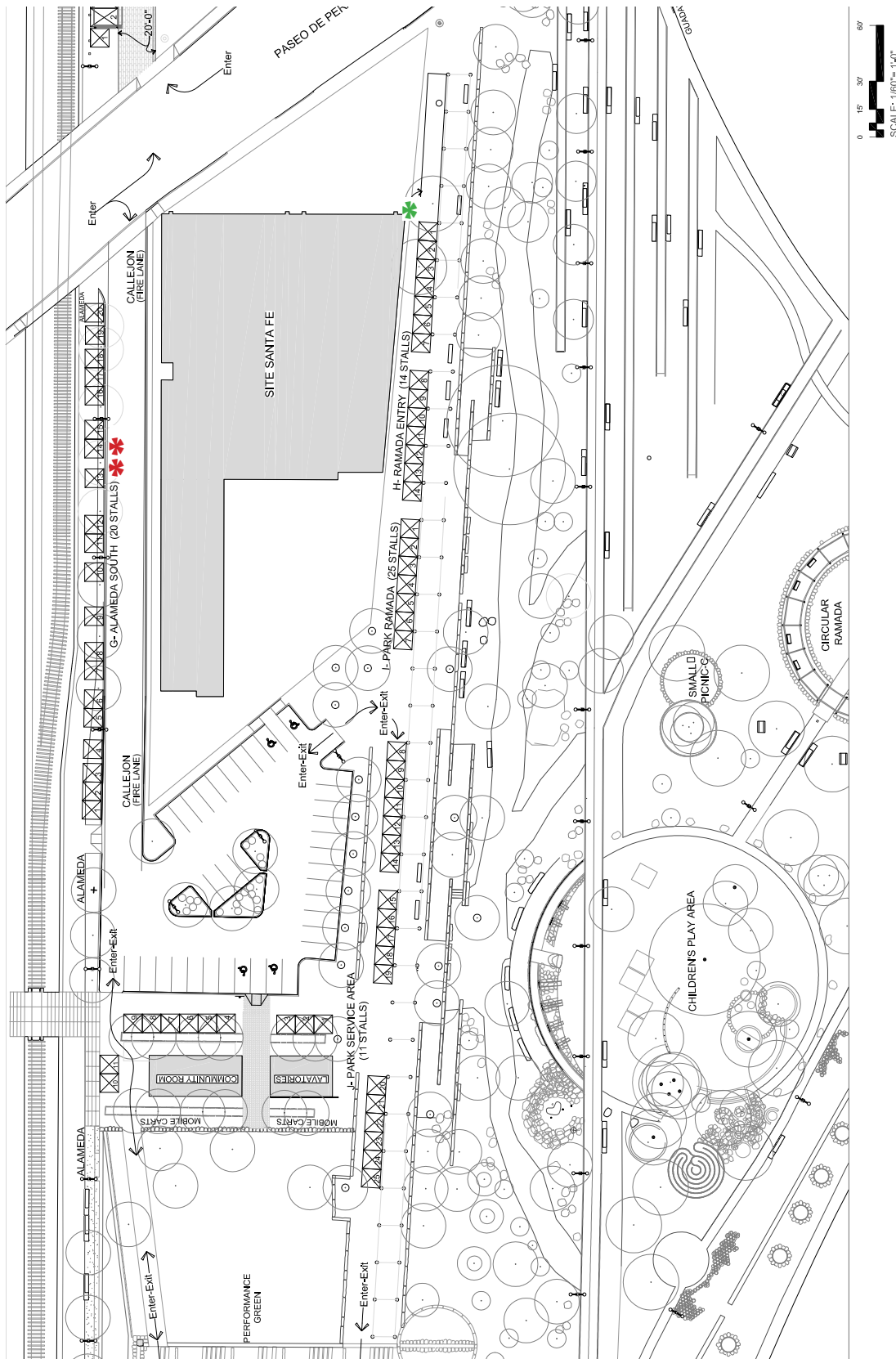
No blocking of fire lanes at any time.



INDIVIDUAL AREA MAPS - SANTA FE RAILYARD AREA F - Montezuma Pocket Park

The stall locations and numbers reflect the maximum possible locations in designated Railyard public spaces, and do not guarantee availability. The allowable placement and number of stalls for your event will be determined by the SFRCC at its discretion based on availability of space, public health and safety, and type of event proposed.

No blocking of fire lanes at any time.

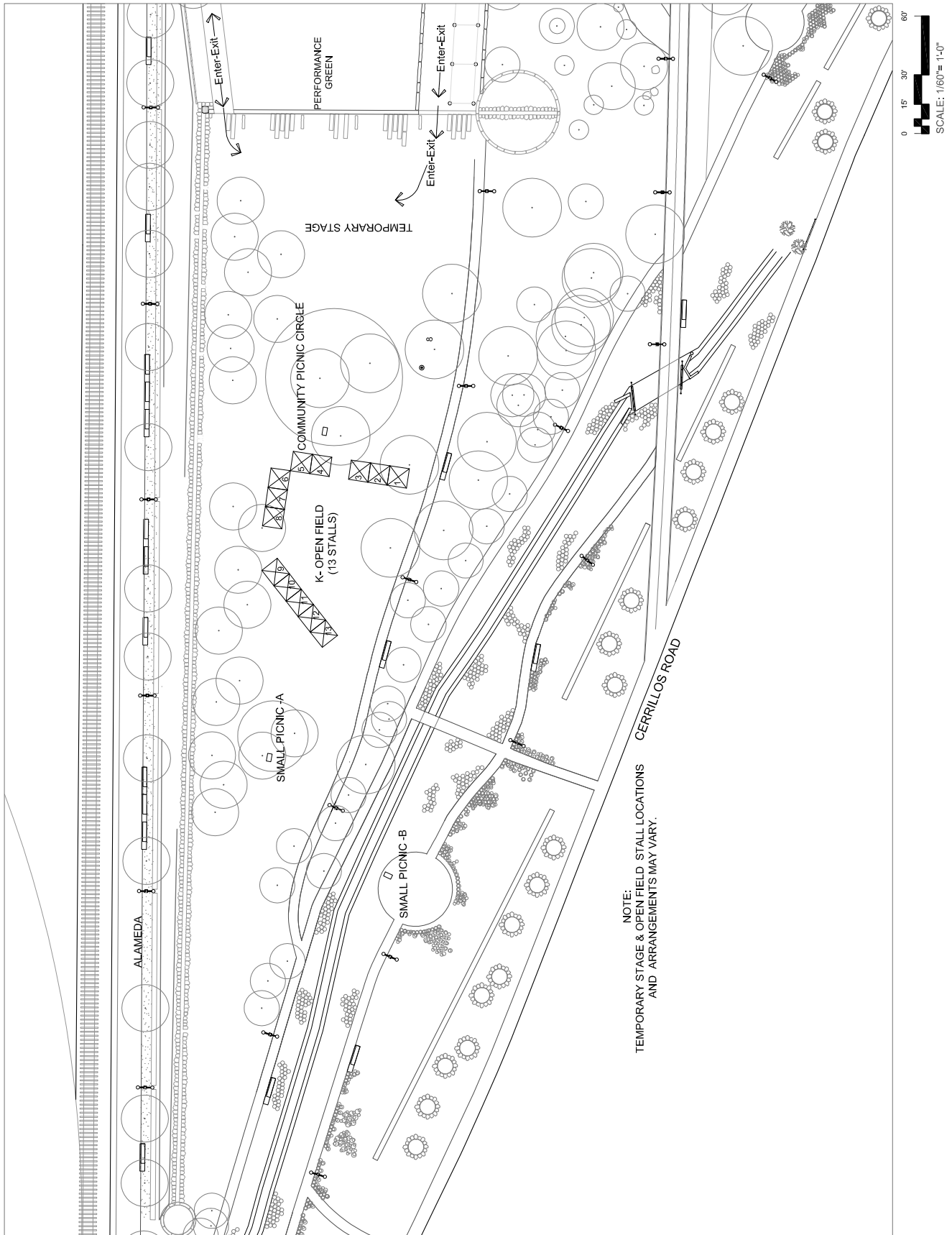


INDIVIDUAL AREA MAPS - SANTA FE RAILYARD AREAS G & H & I & J - Alameda South + Ramada Entry + Park Ramada + Park Service Area

The stall locations and numbers reflect the maximum possible locations in designated Railyard public spaces, and do not guarantee availability. 🌱 Without exceeding maximum amount, stalls can be shifted north. The allowable placement and number of stalls for your event will be determined by the SFRCC at its discretion based on availability of space, public health and safety, and type of event proposed.

No blocking of fire lanes at any time.

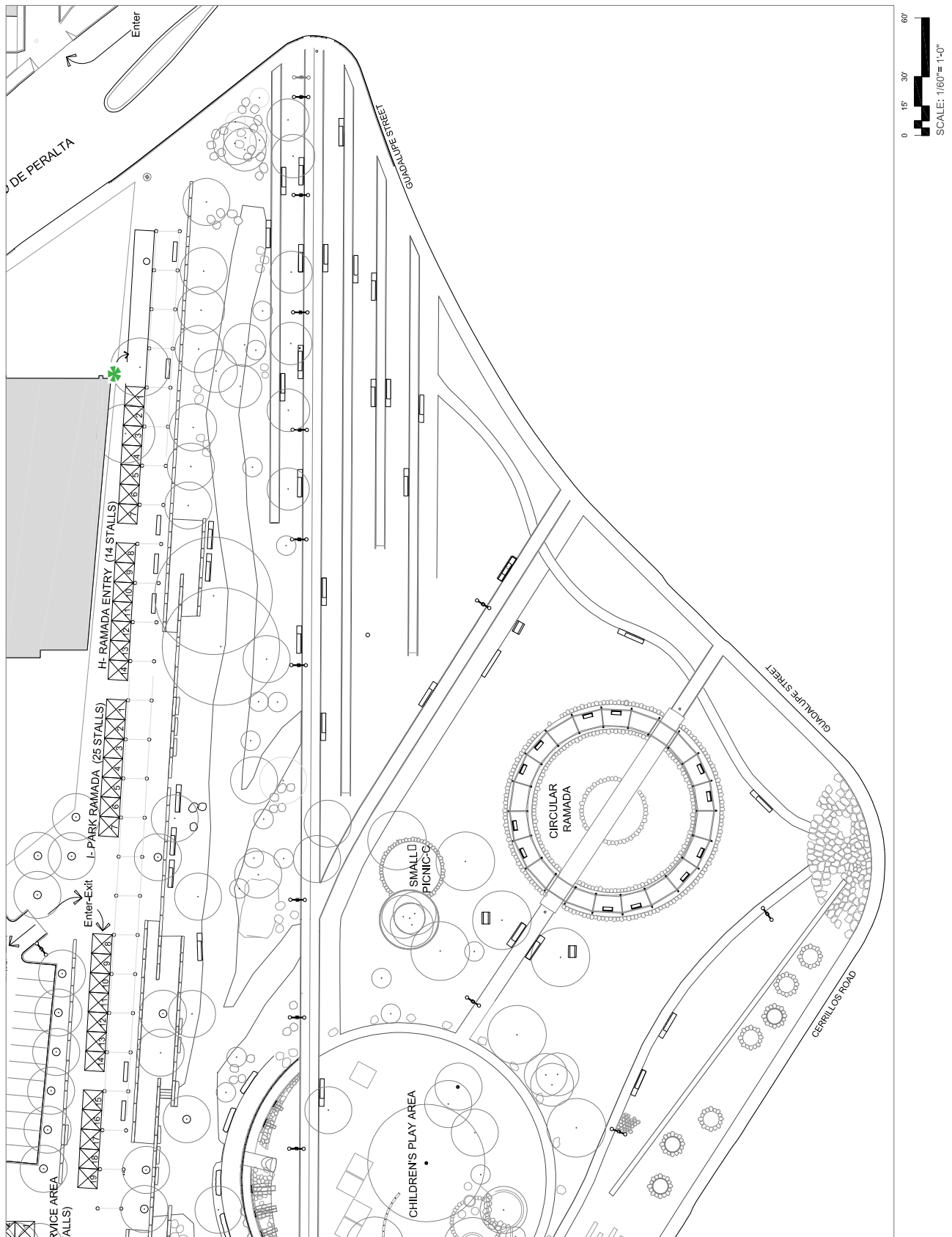
*** Alameda South available only for single overflow events by written permission from SFRCC and Fire Marshall.



INDIVIDUAL AREA MAPS - SANTA FE RAILYARD AREA K - Open Field

The stall locations and numbers reflect the maximum possible locations in designated Railyard public spaces, and do not guarantee availability. The allowable placement and number of stalls for your event will be determined by the SFRCC at its discretion based on availability of space, public health and safety, and type of event proposed.

No blocking of fire lanes at any time.



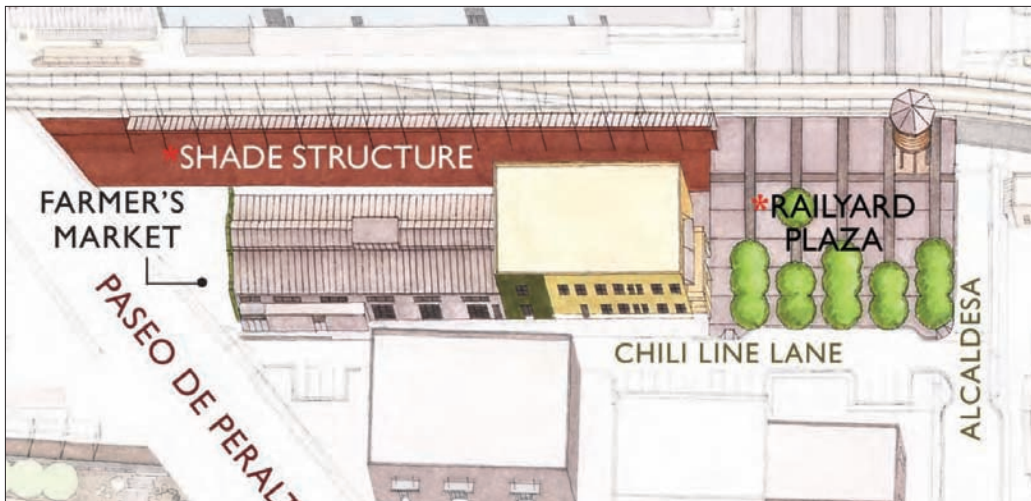
INDIVIDUAL AREA MAPS - SANTA FE RAILYARD CIRCULAR RAMADA AREA L

The stall locations and numbers reflect the maximum possible locations in designated Railyard public spaces, and do not guarantee availability. 🌱 Without exceeding maximum amount, stalls can be shifted north. The allowable placement and number of stalls for your event will be determined by the SFRCC at its discretion based on availability of space, public health and safety, and type of event proposed.

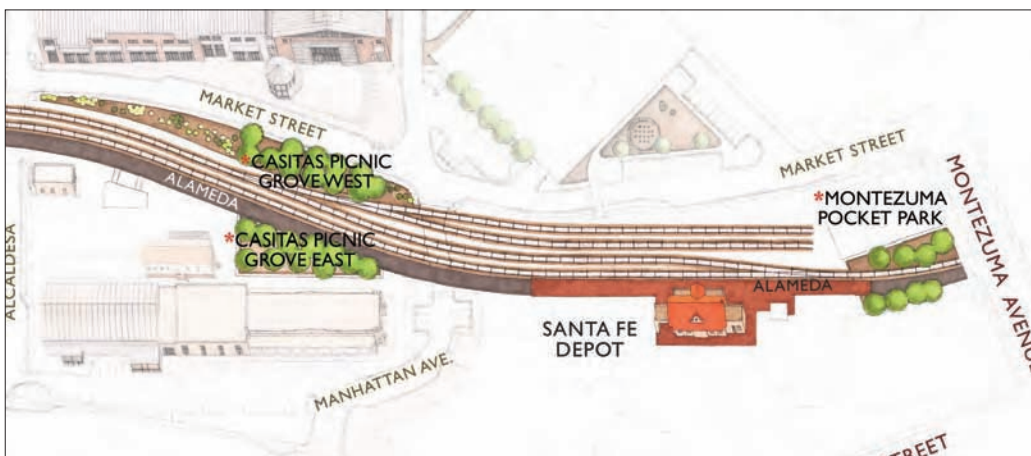
No blocking of fire lanes at any time.



Alameda South of Paseo de Peralta



Alameda and Plaza North of Paseo de Peralta



Alameda North of the Plaza

PUBLIC PERFORMERS LOCATIONS MAPS

Individual Public Performer Locations to be assigned on a case by case basis.

CONSERVATION EASEMENT PUBLIC ART DISTRICT MAPS B+C
(Allowable Public Art Locations Pending Definitions by the Future Railyard Public Art Committee)

