



Catalyzing Livability in the 21st Century

by

Tim Page,

Practice Leader for Urban Design and Planning

Policies are changing...



Presentation Outline

- A Need for Change
- Change is Complicated
- Change in the Trenches



A Need for Change





Leland Ave

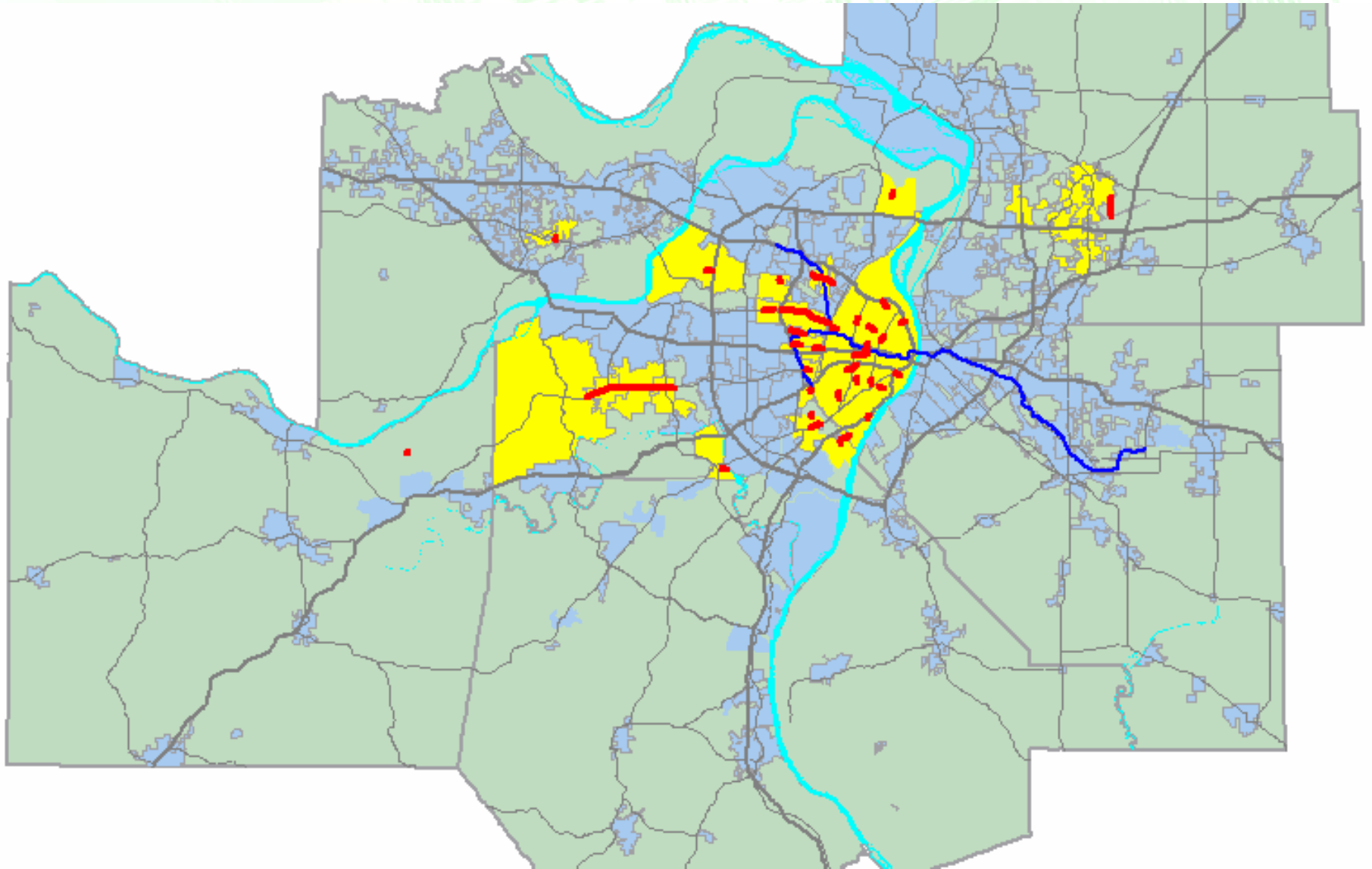
INVEST
CITY

WHEELER ST

RAV4
TOYOTA

824 8563

What's the problem?



**GRAVOIS
AUTO REPAIR**
638-3944
ASE CERTIFIED
TECHNICIANS

13-9'

LOW
CLEARANCE



SHARE
THE
ROAD

30





TV, VCR SERVICE 993 0707

TV, VCR SERVICE

MEMBERSHIP

U CITY OLIVE LINK
Olive Business Association

PROSPECT ST

WELCOME



Change is Complicated

What makes a place “great” ?



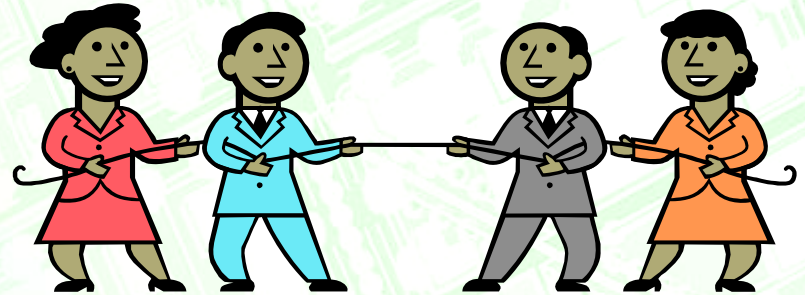






It Depends on Who You Ask

- City Government?
- Engineers?
- Architects?
- Business Owners?
- Residents?
- Commuters?
- Bicyclists? Pedestrians?





“Carlanes:” If bicyclists ran the world....

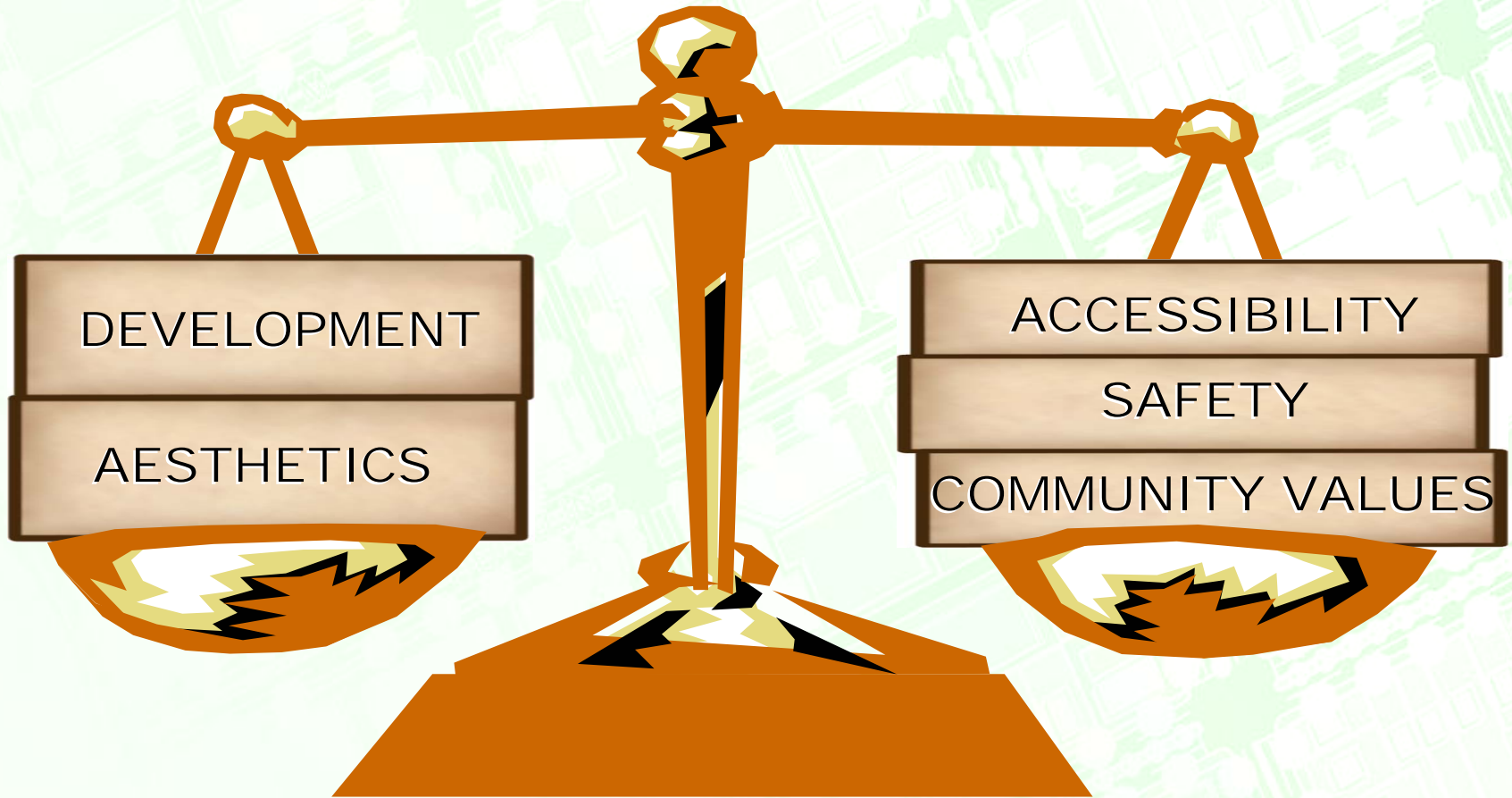


**BICYCLE ALLIANCE
of WASHINGTON**

Member of Earth Share of Washington

More people bicycling more often.

A Delicate Balance



to be great... **STREETS, SPACES & PLACES** must...



reflect the **CHARACTER** of the communities to which they belong



allow people to **WALK** comfortably and safely



contribute to the **ECONOMIC VITALITY** of the community and region



be functionally complete, providing a balance of **MODAL CHOICE** throughout the place



create attractive places that promote **SOCIAL ACTIVITY**



integrate **GREEN TECHNOLOGIES** into the design and construction

The background of the slide is a light green, semi-transparent image of a microchip or circuit board. It features a complex grid of lines, squares, and circles, representing the intricate patterns of a semiconductor device. The overall aesthetic is clean and technical.

Change in the Trenches

Context is King

- What type of place are we trying to create?
- Says who?
- How do we measure success?
- How do we mitigate compromise?





St. Louis Streetcar

Mixed-use District

Listening Matters









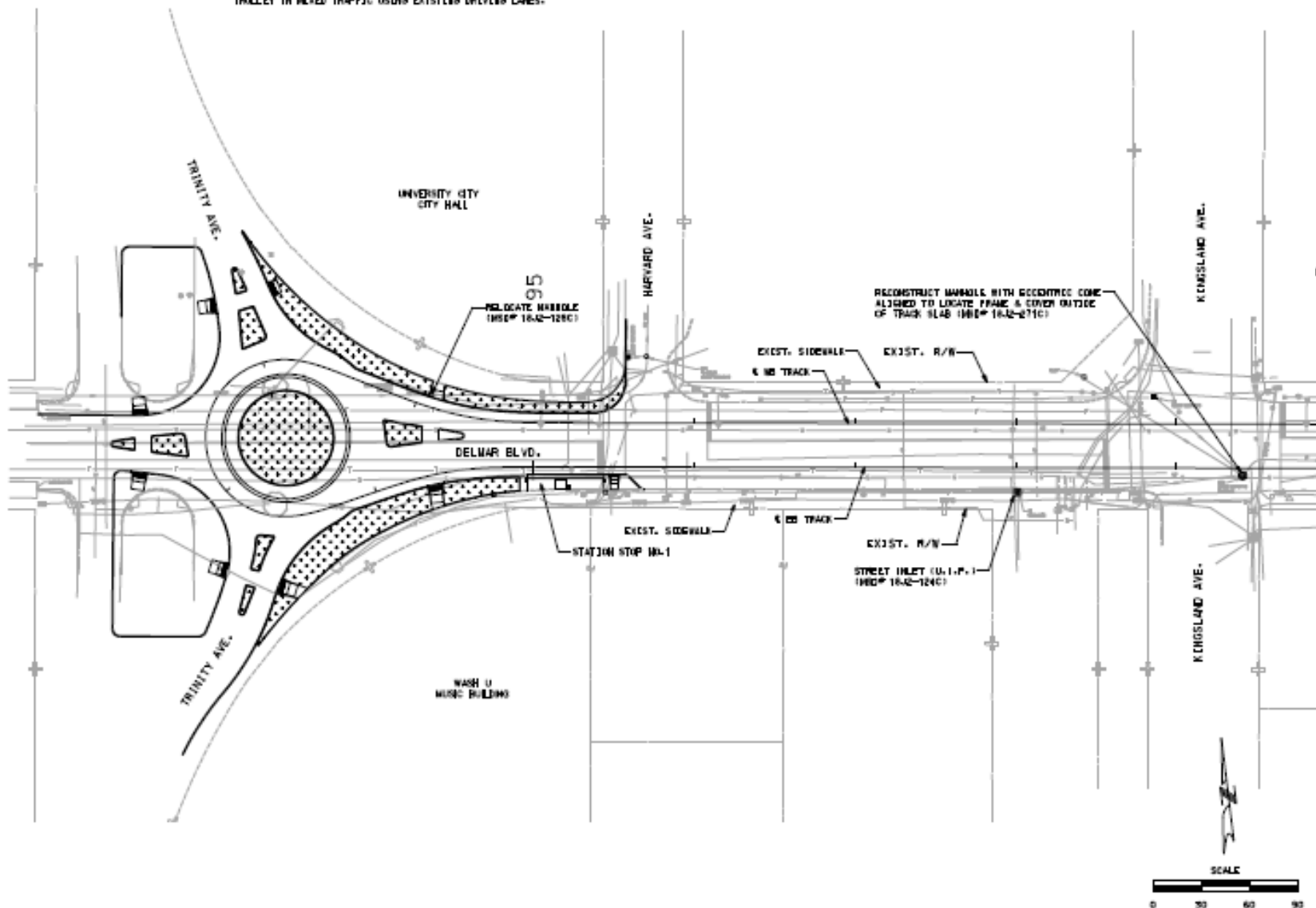








GENERAL NOTE:
TRILLET TRAVEL TRAFFIC USING EXISTING DRIVER LANES.



MATCH LINE (SEE SHEET 2)

PRELIMINARY
PLANS
FOR
INFORMATION
ONLY

DATE	DESCRIPTION
12/29/2009	ISSUE NO. 01
12/29/2009	ISSUE NO. 02
12/29/2009	ISSUE NO. 03
12/29/2009	ISSUE NO. 04
12/29/2009	ISSUE NO. 05
12/29/2009	ISSUE NO. 06
12/29/2009	ISSUE NO. 07
12/29/2009	ISSUE NO. 08
12/29/2009	ISSUE NO. 09
12/29/2009	ISSUE NO. 10
12/29/2009	ISSUE NO. 11
12/29/2009	ISSUE NO. 12
12/29/2009	ISSUE NO. 13
12/29/2009	ISSUE NO. 14
12/29/2009	ISSUE NO. 15
12/29/2009	ISSUE NO. 16
12/29/2009	ISSUE NO. 17
12/29/2009	ISSUE NO. 18
12/29/2009	ISSUE NO. 19
12/29/2009	ISSUE NO. 20

EAST-WEST GATEWAY
 MASS-TRANSIT STATION, CORNER OF DELMAR BLVD
 AND KINGSLAND AVE. ST. LOUIS, MO 63102
 PHONE: (314) 467-4000 or (314) 274-2766

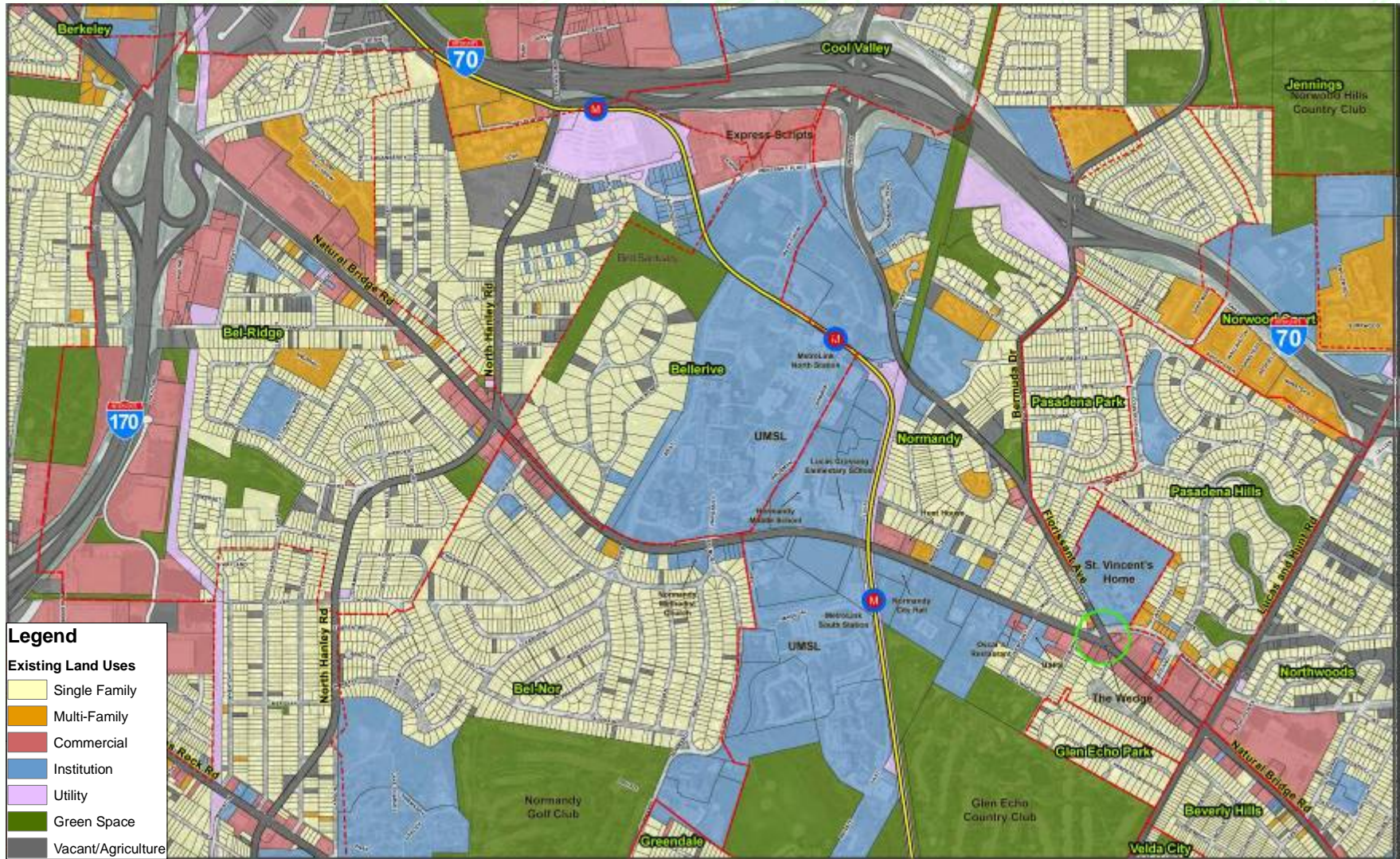
DRAINAGE
CONSTRUCTION PLAN
SHEET 1 OF 14

An aerial map of a city grid, overlaid with a pattern of green and white circular markers. The markers are arranged in a grid-like pattern, with some larger green circles and many smaller white circles. The background is a light green color with a faint grid pattern.

Natural Bridge Road

Mixed-use, Institutional District

LOCAL MARKET



Land Uses- Existing

\$20⁰⁰
SHOE OUTLET

Carroll's
RESTAURANT

RESTAURANT
1111 S. ...
& ...

Shrimp

Payday Loan

LEE'S
Famous Recipe Chicken

Dominos
Pizza



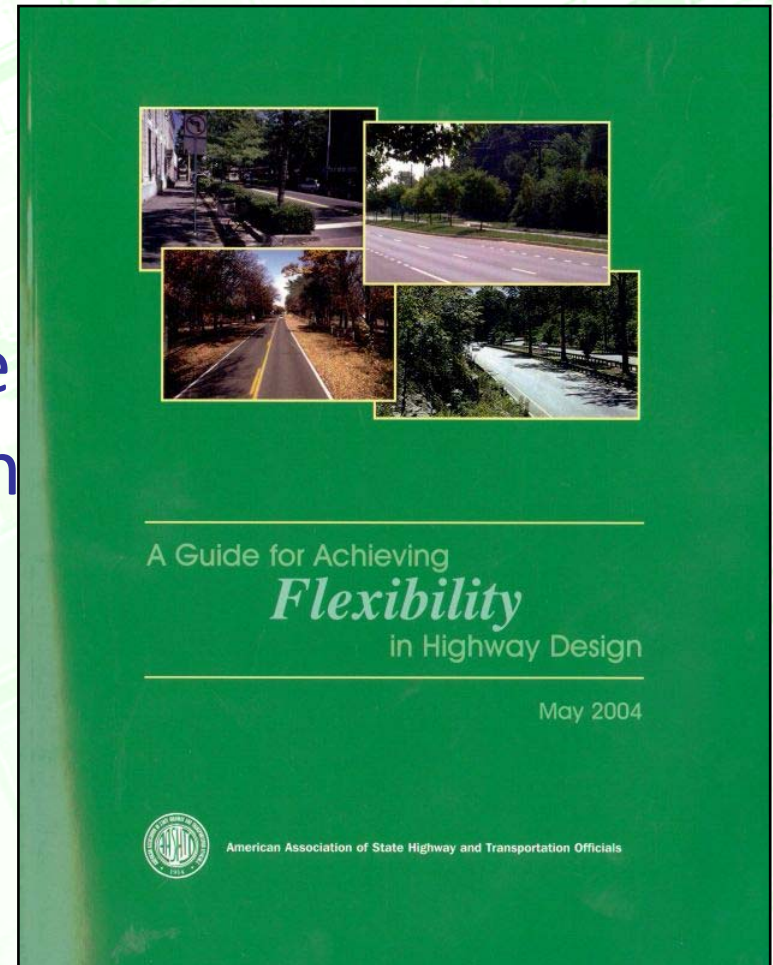
Do Our Roads Need Diets?

- This one does:
 - 20,000 ADT
 - 5 lanes of capacity
 - Opportunity to creatively repurpose r/w



Designers Have Choices

- Planners and designers have choices (not mandates)
- We must understand the functional basis of design criteria and standards
- AASHTO Green Book is flexible
- Be creative and innovative



What does it mean to say...

“We will not compromise safety?”

Cars

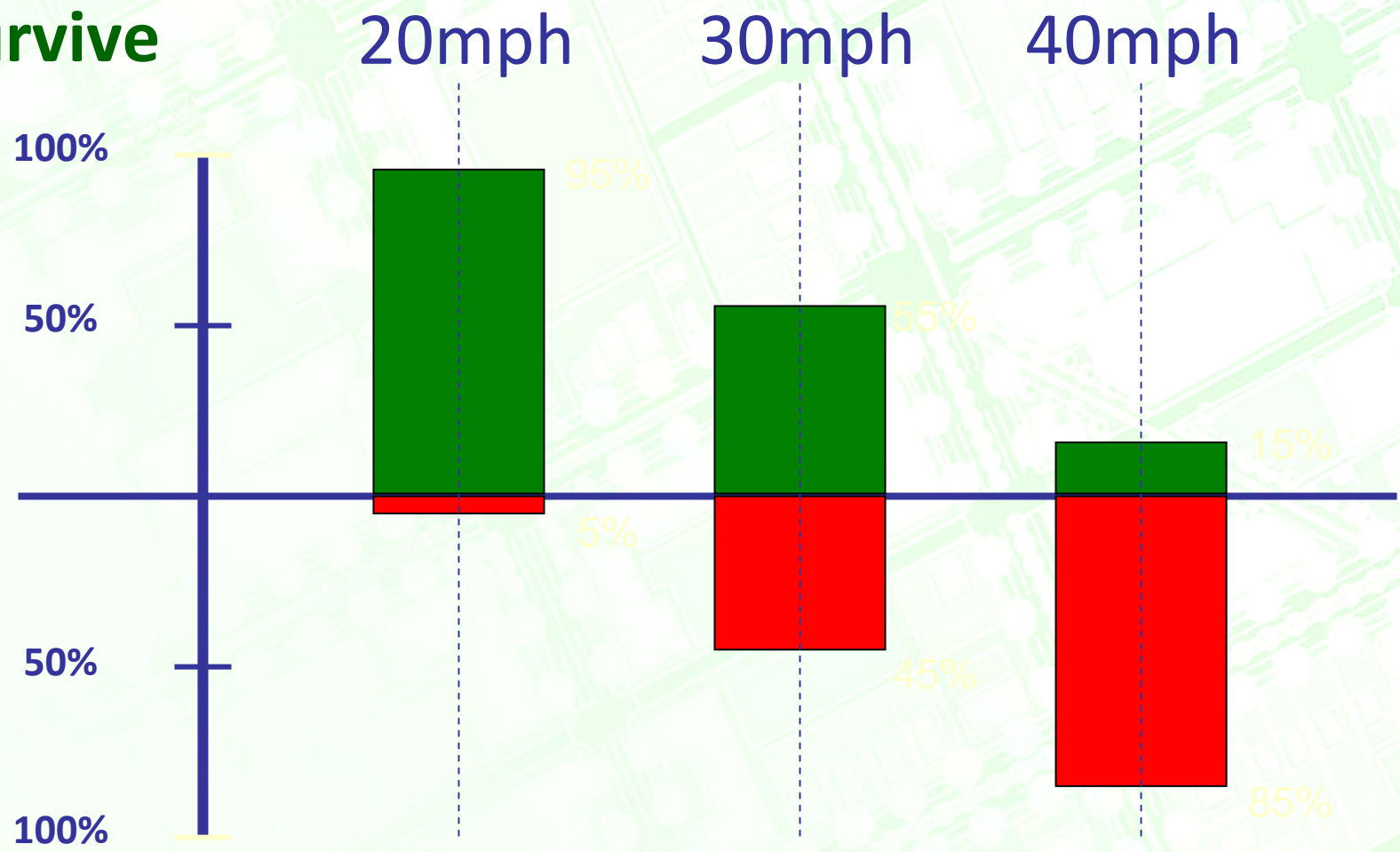
Trucks



Bicycles

Speed, Pedestrians, and Safety

% survive



% die

Source: AASTHO

\$20⁰⁰
SHOE OUTLET

Carroll's
RESTAURANT

RESTAURANT
1111 E. Highway
6, Carrollton, GA

Shrimp
RESTAURANT

Payday Loan

LEE'S
Famous Recipe Chicken

Dominos's
PIZZA







DeBaliviere Greenway

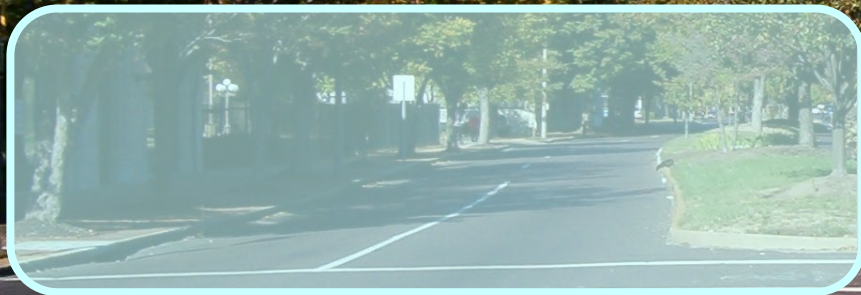
Mixed-use Multi-modal Corridor



Waterman Bl

TER GARDEN

DeBaliviere looking
north at Waterman



Auto traffic moved
to west side (3
lanes only)



Trolley will likely
run slightly east
of existing
centerline



Greenway given
significant
dimension on east

Net Result is a Remarkable Transformation







Labadie Placemaking

Town Center

Character Counts

- What is it?
- Who defines it?
- How do we preserve/enhance it?

- Labadie Great Street example



SUNSHINE MOTOR HOTEL

RESTAURANT

SPEED
LIMIT
30

STOP
AHEAD

WELCOME TO WILLOW TOWN
SUNSHINE MOTOR HOTEL

Route T and Front Street

(looking north)



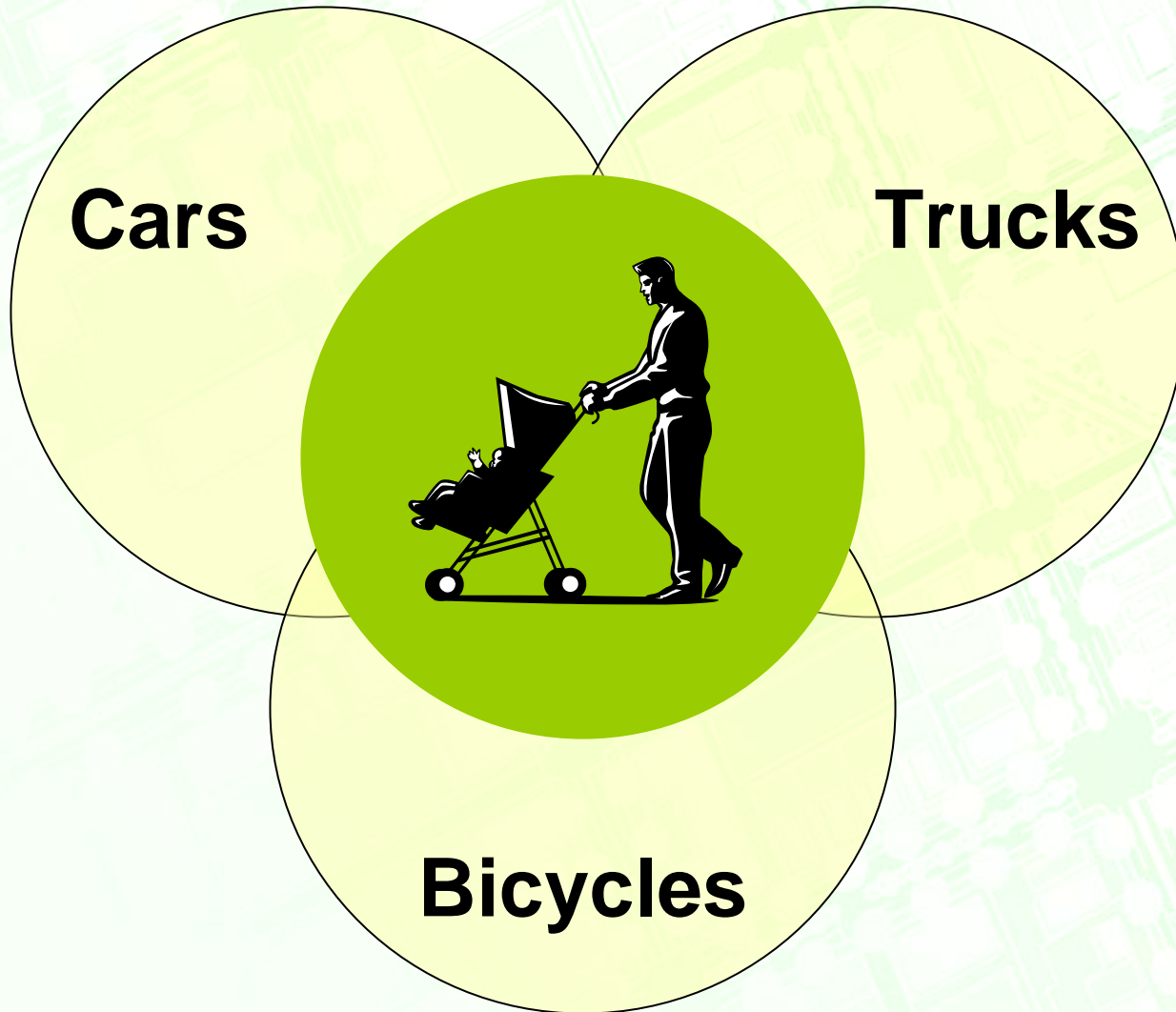


“Washington Square”

(looking north)

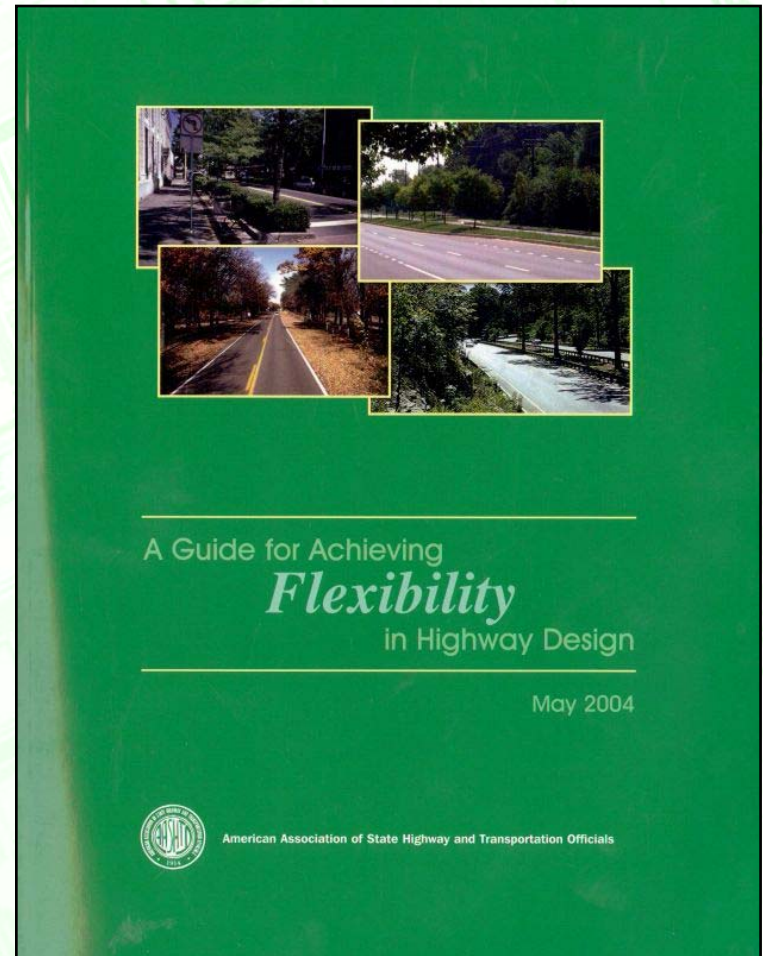


More Feet on the Street



Different Place, Different Criteria

- Flexible choices for:
 - design speed
 - lane width
 - median design
 - clear zone





Greenroads

more sustainable roads for a better transportation future

The background of the slide is an aerial photograph of a city grid, likely Aurora, Colorado. The streets are visible as a network of lines. Overlaid on this grid are numerous circular markers. Some are solid green, while others are white with a green outline. These markers are arranged in a pattern that suggests a specific corridor or set of locations within the city. The overall color palette is light green and white, giving it a clean, modern, and urban feel.

Aurora Corridor

Suburban Commercial Arterial



Project Background

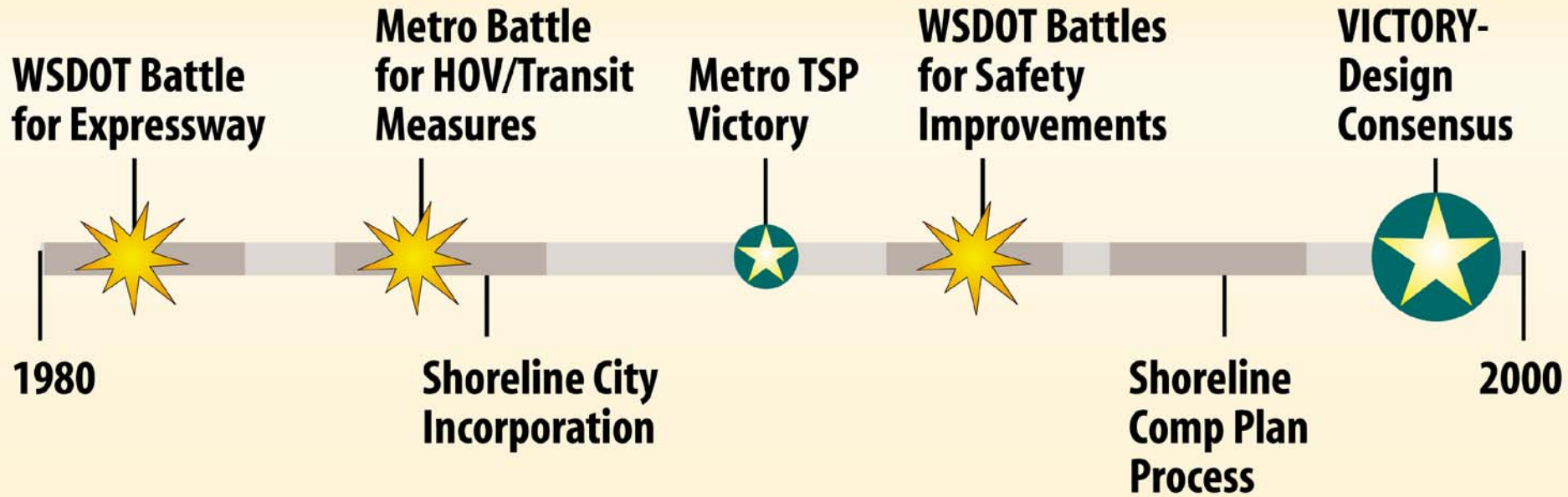
- Three miles, 5 lanes with TWLTL
- Traffic congestion
- High accident rates
- No sidewalks
- Poor aesthetics
- Activist community



Competing objectives

- Downtown commercial street vs. regional arterial
- Business access vs. traffic safety
- Auto-oriented vs. multimodal
- Revitalization/image vs. neighborhood impacts
- Traffic capacity vs. neighborhood impacts
- Sidewalks vs. loss of parking

Shoreline/Aurora Avenue - Battle History



Cars

Trucks



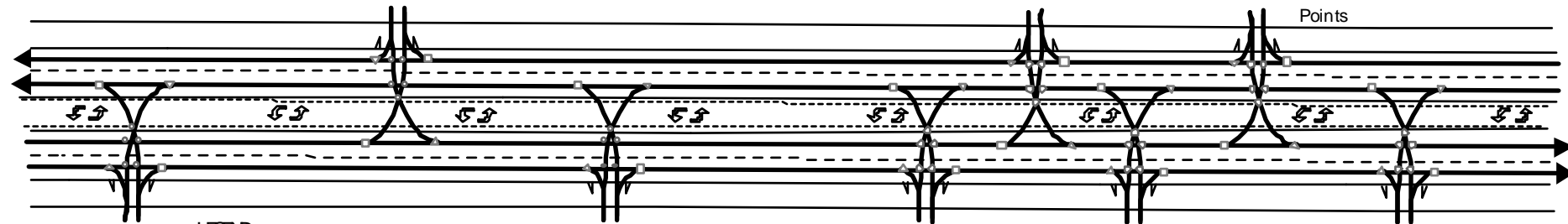
Bicycles

Conflict Point Diagram

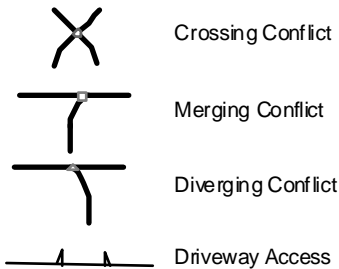
Before/Alternative 1 Conditions

40 Crossing Conflicts
 16 Merging Conflicts
 16 Diverging Conflicts

 72 Total Conflict
 Points



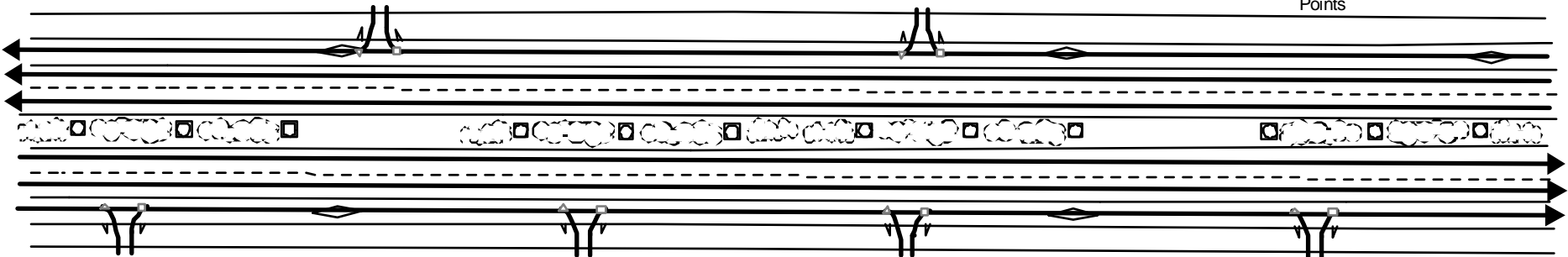
LEGEND



Preferred Alternative Conditions

0 Crossing Conflicts
 6 Merging Conflicts
 6 Diverging Conflicts

 12 Total Conflict
 Points



Success...Finally!

- Award-winning outcome



- Working collaboratively was essential

Now is the time to plan!

