

Santa Fe & the 2010 Census: Growth & Change

*The geography of population, housing,
age, income, and ethnicity.*

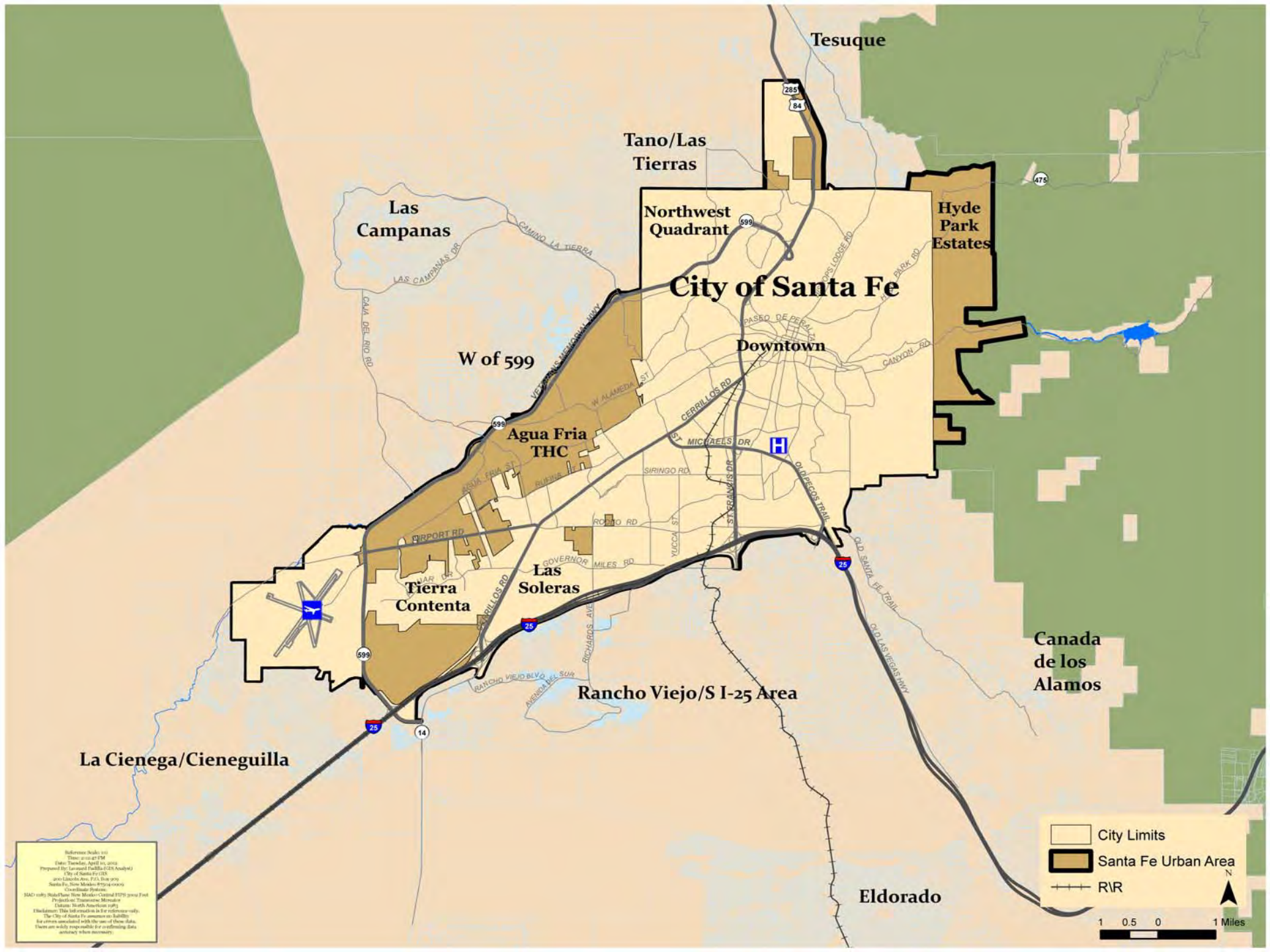
Presented by: Reed Liming
Long Range Planning Director
City of Santa Fe
Ph: 955-6610
rcliming@santafenm.gov

Getting Started

- Census data only
- Q & A
- ~~∅~~ Census accuracy / methodology
- ~~∅~~ Local public policy

Thanks:

Leonard Padilla (City GIS Division);
Karma Shore (UNM-BBER)



Tesuque

Tano/Las Tierras

Las Campanas

Northwest Quadrant

Hyde Park Estates

City of Santa Fe

Downtown

W of 599

Agua Fria THC

Tierra Contenta

Las Soleras

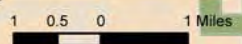
Rancho Viejo/S I-25 Area

Canada de los Alamos

La Cienega/Cieneguilla

Eldorado

- City Limits
- Santa Fe Urban Area
- R/R



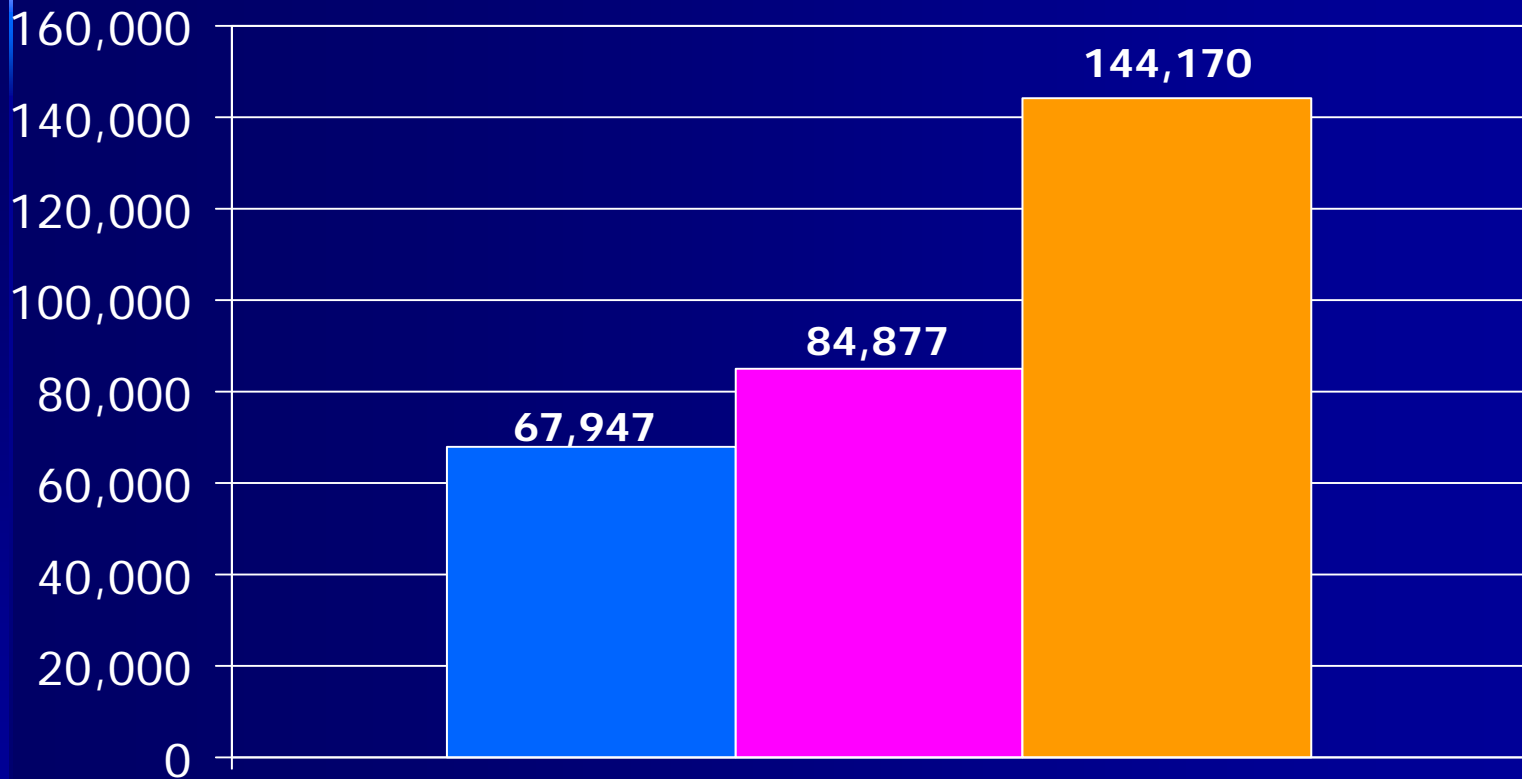
Reference Scale 1:1
 Title: Santa Fe Urban Area
 Date: Tuesday, April 16, 2013
 Prepared by: Geomatics/Patricia (231) Andujar
 City of Santa Fe, NM
 2013 Land Use Plan, P.L. 13-009
 Santa Fe, New Mexico 87504-0001
 Copyright: Geomatics
 All rights reserved. No portion of this work may be reproduced, stored in a retrieval system, or transmitted in any form or by any means, electronic, mechanical, photocopying, recording, or by any information storage and retrieval system, without the prior written permission of the City of Santa Fe. The City of Santa Fe assumes no liability for errors or omissions in this work. Users are solely responsible for confirming data accuracy where necessary.

How Many People Live Here?

2010 Population

Source: U.S. Census 2010, Summary File 1; Census Tract data to calculate Urban Area Pop.

Total Population



2010

City of SF

Urban Area

SF County

How much did we grow ?

| | <u>2000</u> | <u>2010</u> | <u>Growth</u> | <u>(%)</u> |
|-------------------------|-------------|-------------|---------------|------------|
| <i>City of Santa Fe</i> | 62,203 | 67,947 | +5,744 | (9.2) |
| <i>Urban Area*</i> | 79,100 | 84,877 | +5,777 | (7.3) |
| <i>Agua Fria THC</i> | 2,051 | 2,800 | +749 | |
| <i>Santa Fe County</i> | 129,292 | 144,170 | + 14,878 | (11.5) |
| <i>New Mexico</i> | 1,819,046 | 2,059,179 | + 240,133 | (13.2) |

U.S. Census Bureau; 2000 & 2010 Census.

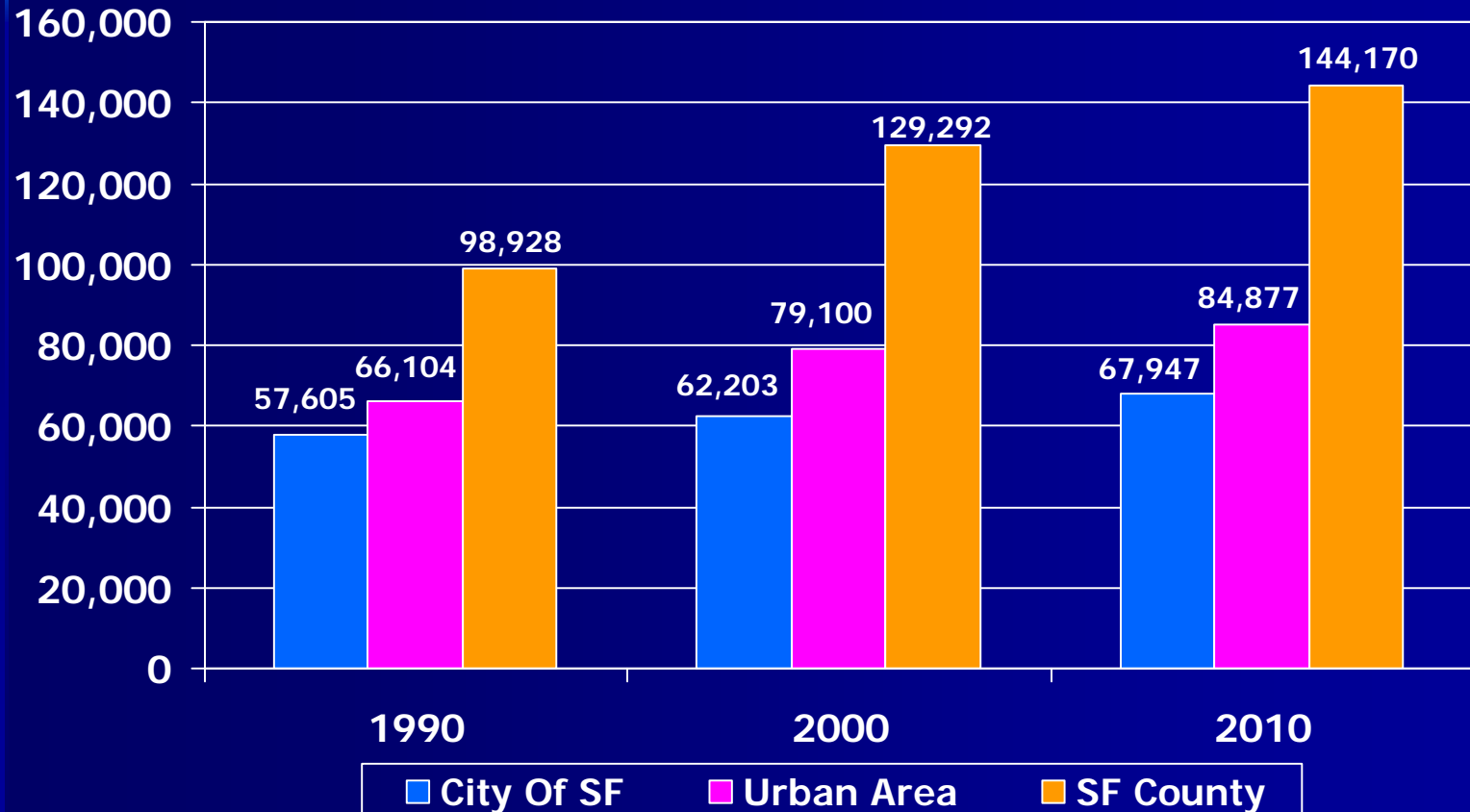
* Derived from U.S. Census.

How Much Did We Grow?

Population 1990, 2000, 2010

Source: U.S. Census 1990, 2000, 2010 – Summary File 1

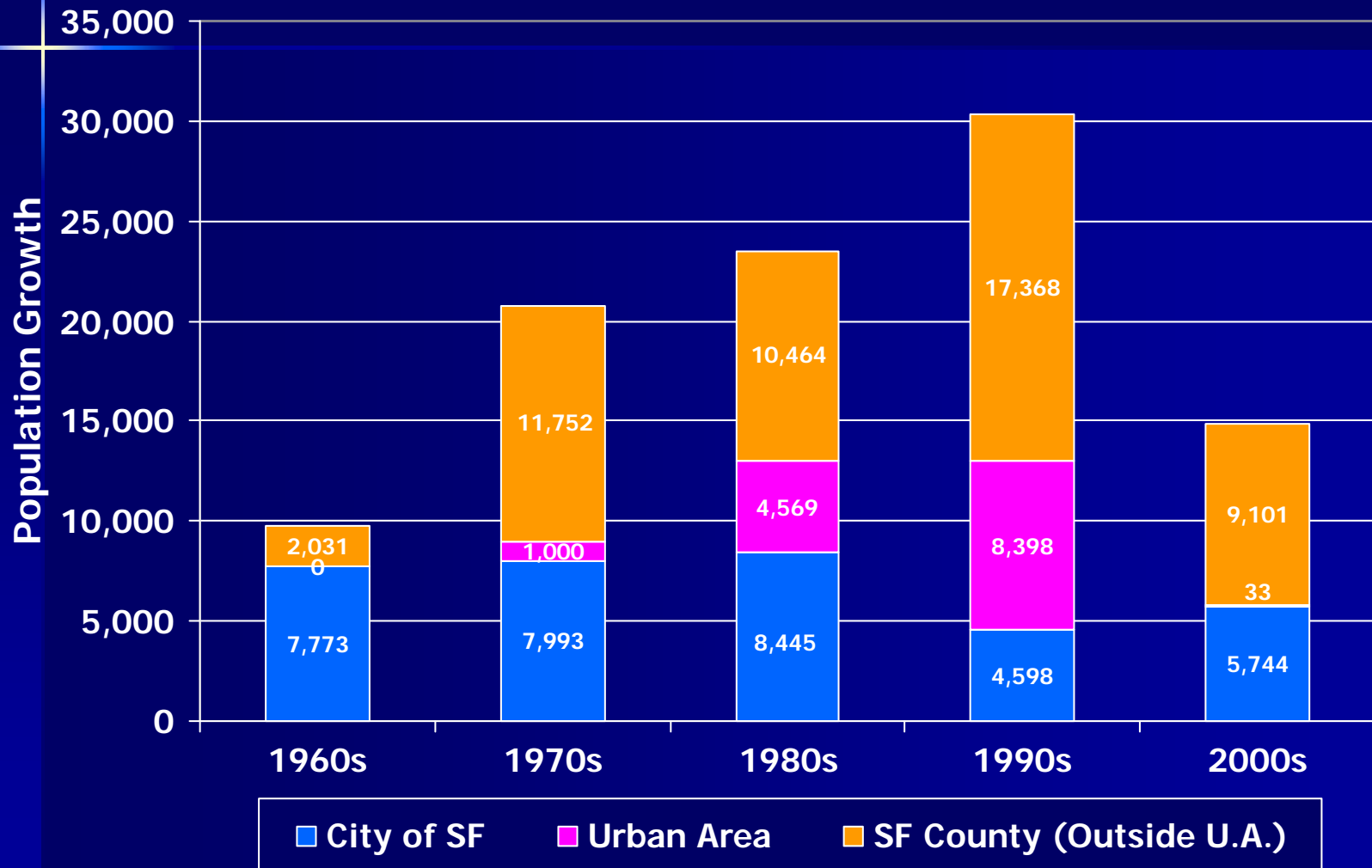
*Total
Population*



Santa Fe County Growth Components

Population Growth By Decade, 1960s–2000s

Source: UNM-BBER; U.S. Census 1960, 1970, 1980, 1990, 2000 & 2010

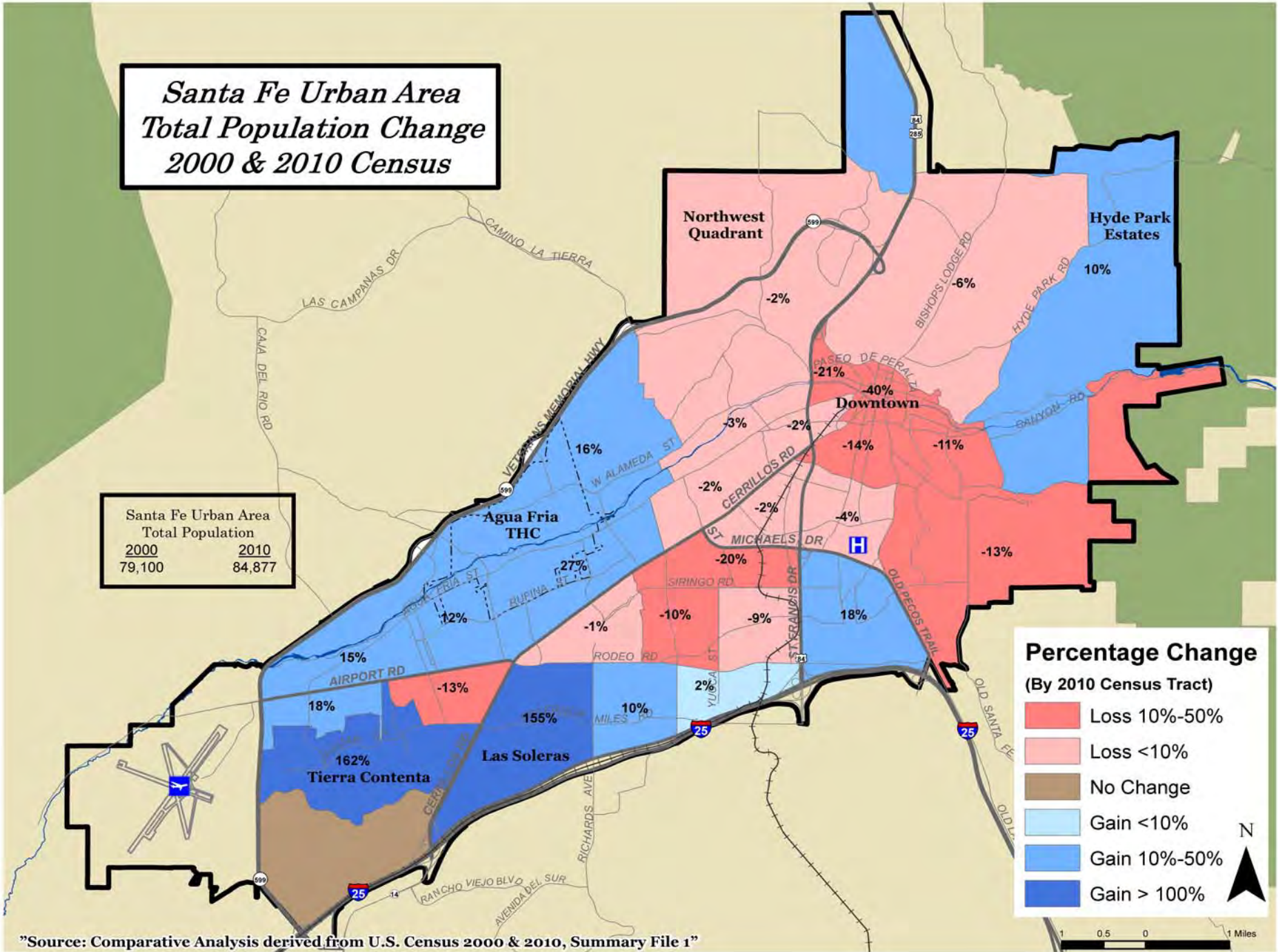


Total Population:

Changes within Santa Fe

Santa Fe Urban Area Total Population Change 2000 & 2010 Census

| Santa Fe Urban Area Total Population | |
|---|--------|
| 2000 | 2010 |
| 79,100 | 84,877 |

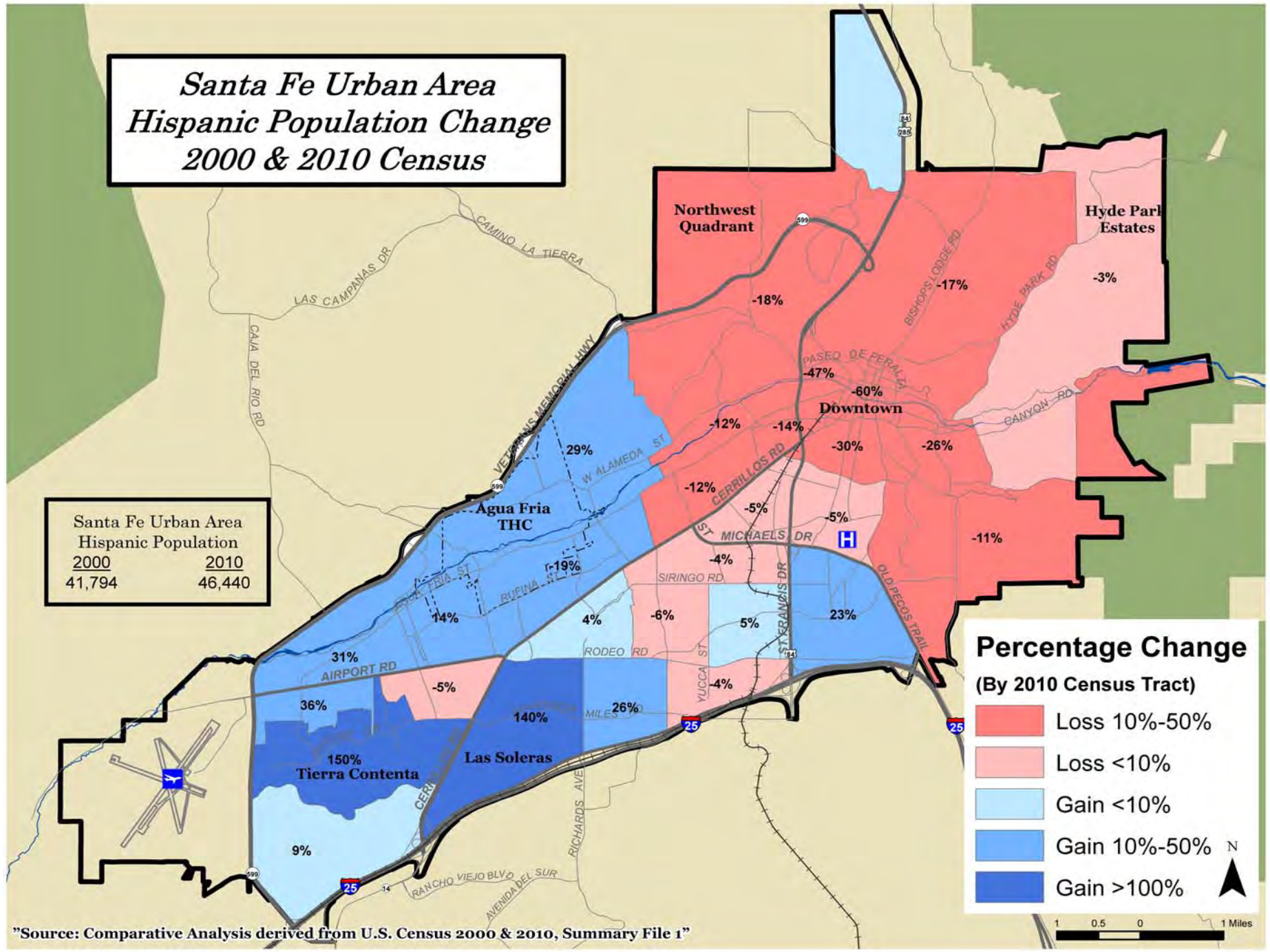


Source: Comparative Analysis derived from U.S. Census 2000 & 2010, Summary File 1

Hispanic Population - Changes within Santa Fe

Santa Fe Urban Area Hispanic Population Change 2000 & 2010 Census

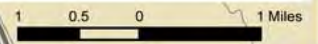
| | |
|--|-------------|
| Santa Fe Urban Area Hispanic Population | |
| <u>2000</u> | <u>2010</u> |
| 41,794 | 46,440 |



Percentage Change (By 2010 Census Tract)

- Loss 10%-50%
- Loss <10%
- Gain <10%
- Gain 10%-50%
- Gain >100%

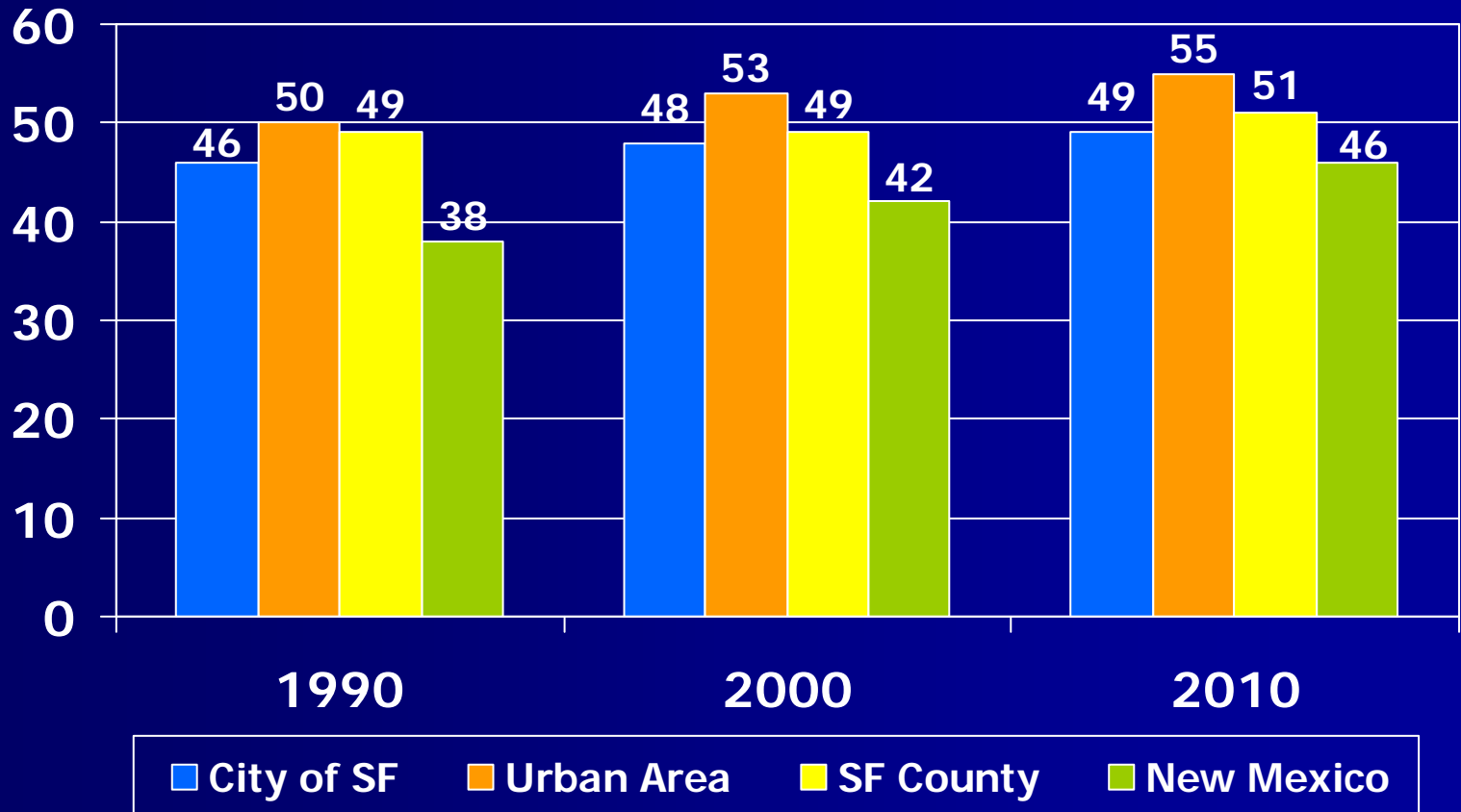
"Source: Comparative Analysis derived from U.S. Census 2000 & 2010, Summary File 1"



Hispanic Population as % of Total Population 1990, 2000, 2010

Source: U.S. Census 1990, 2000 (SF-1, Table P011); 2010 (SF-1, Table P4); derived by Census Tract for urban area.

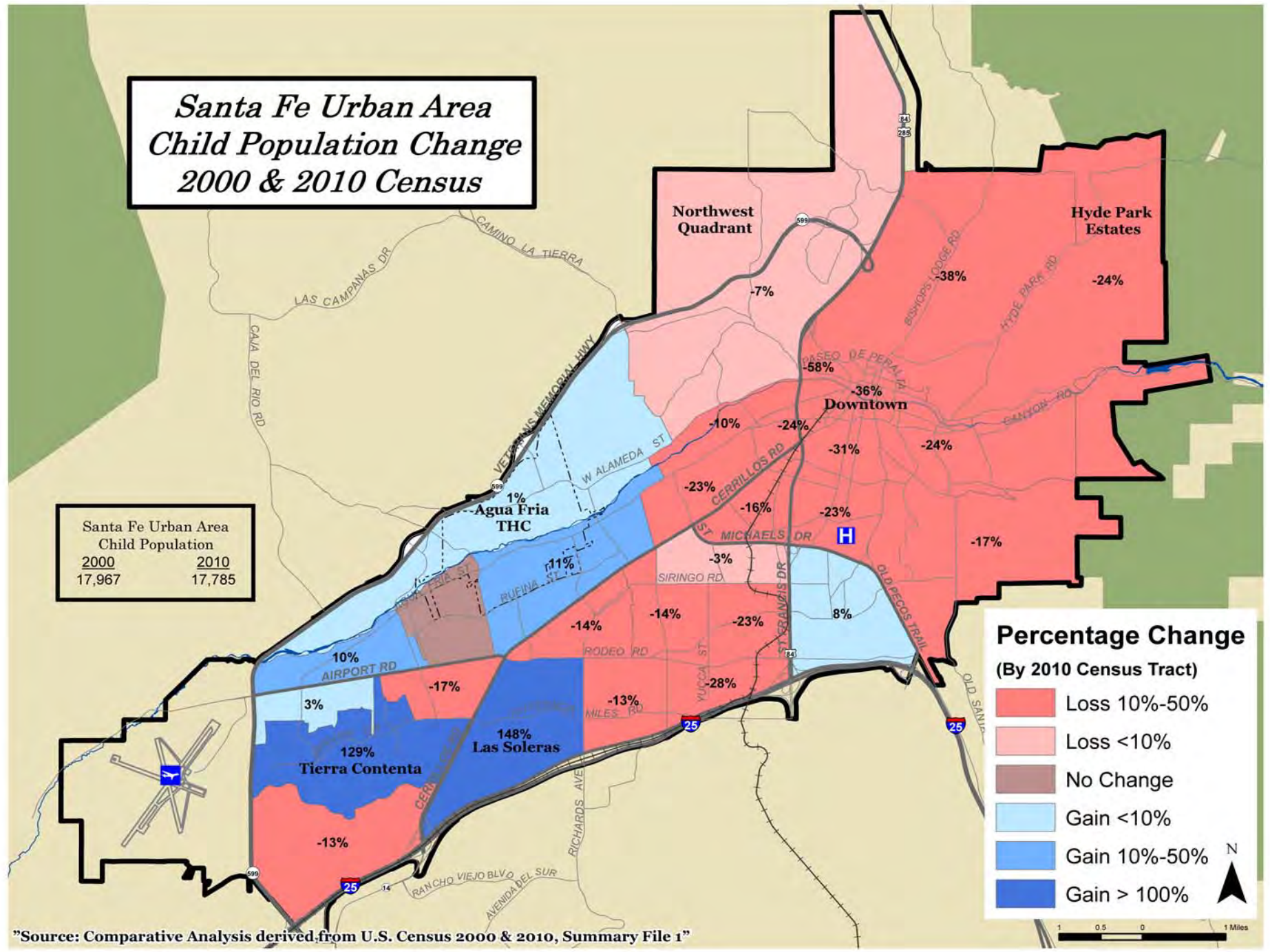
% of Total Pop.



Child Population – Changes Within Santa Fe

Santa Fe Urban Area Child Population Change 2000 & 2010 Census

| Santa Fe Urban Area Child Population | |
|---|--------|
| 2000 | 2010 |
| 17,967 | 17,785 |



Percentage Change
(By 2010 Census Tract)

- Loss 10%-50%
- Loss <10%
- No Change
- Gain <10%
- Gain 10%-50%
- Gain > 100%

"Source: Comparative Analysis derived from U.S. Census 2000 & 2010, Summary File 1"



Change in Child Population (Under Age 18)

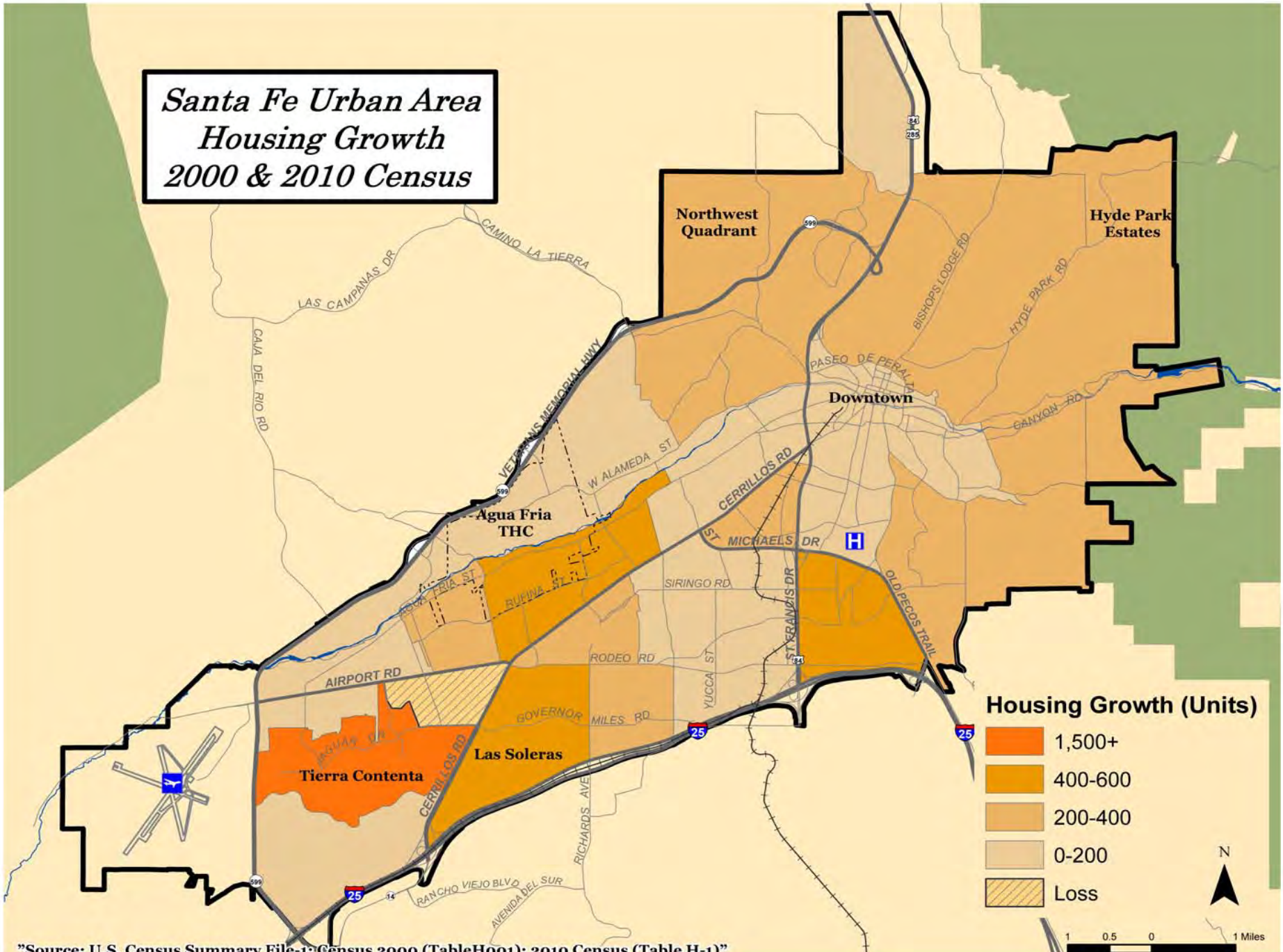
| | <u>1990s</u> | <u>2000s</u> |
|-----------------|--------------|--------------|
| S.F. Urban Area | +1,633 | -182 |
| S.F. County | +5,404 | -865 |
| New Mexico | +61,833 | +10,098 |
| United States | +8,700,000 | +1,900,000 |

* (1950s – U.S. +17,000,000)

Source: U.S. Census 1990, 2000, 2010 (Summary File 1, Table QT-P1).

Housing Growth - Changes Within Santa Fe

*Santa Fe Urban Area
Housing Growth
2000 & 2010 Census*

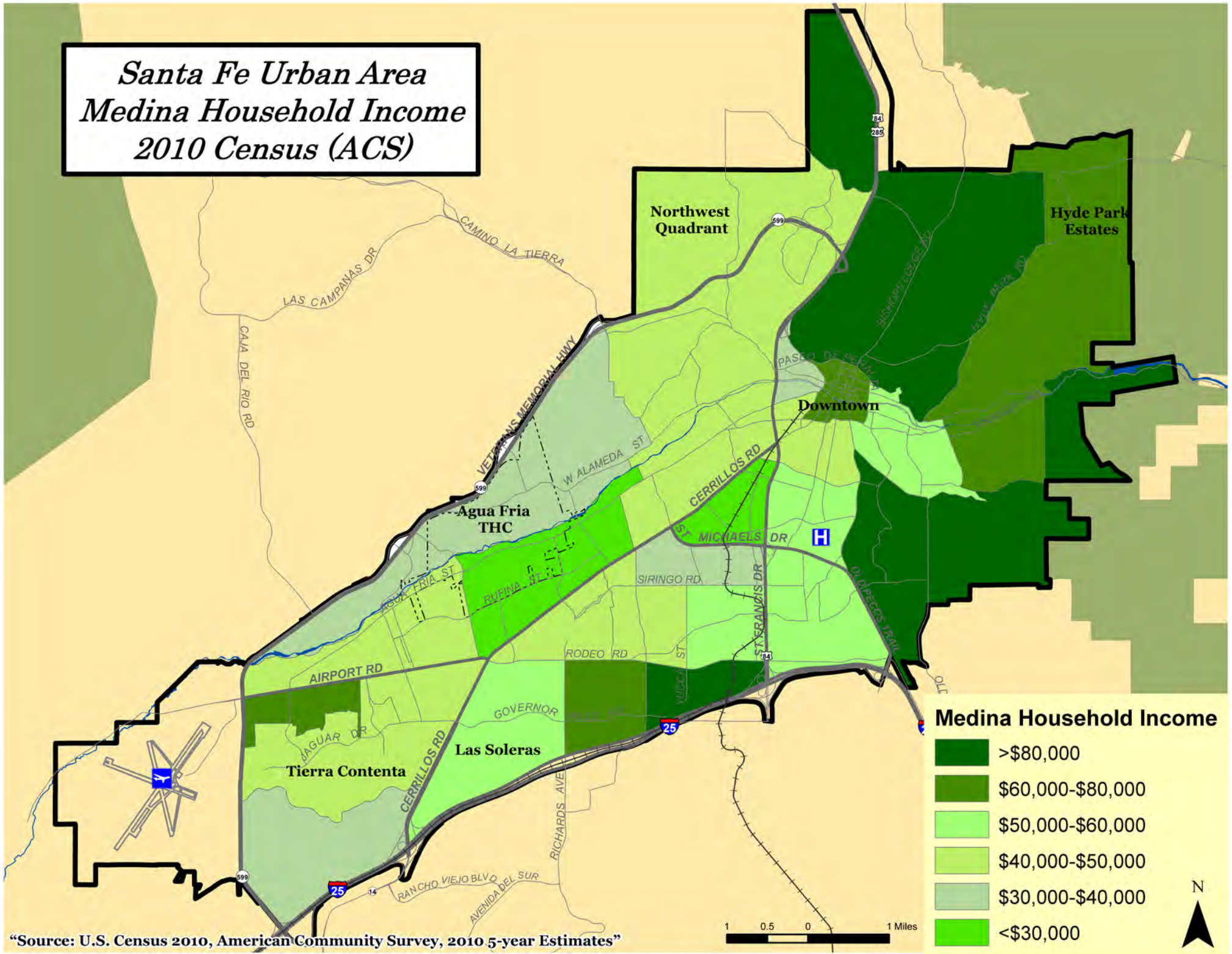


"Source: U.S. Census Summary File-1; Census 2000 (Table H001); 2010 Census (Table H-1)"

Where's the Money?

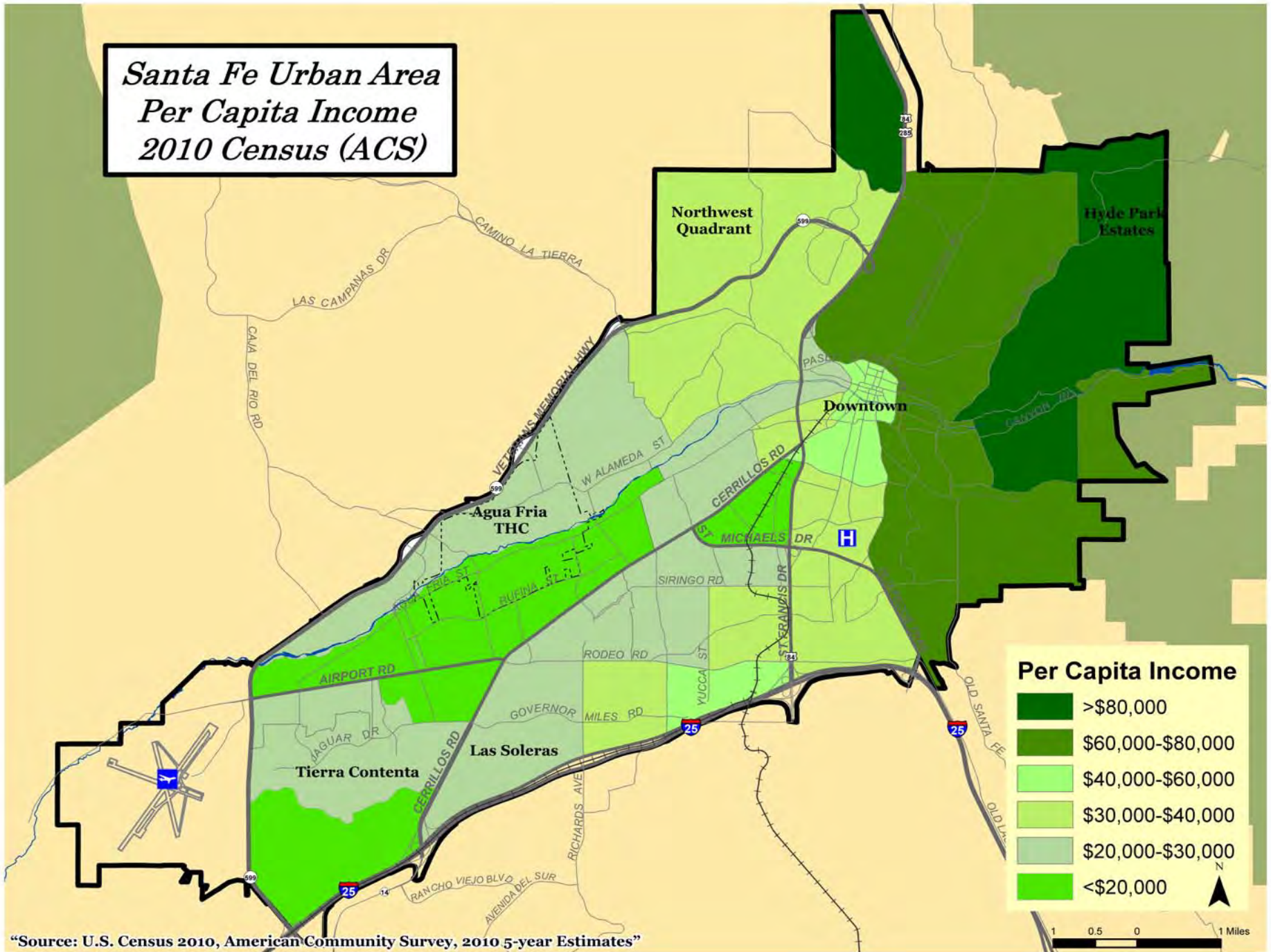
(Median Household Income, 2010)

*Santa Fe Urban Area
Medina Household Income
2010 Census (ACS)*



“Source: U.S. Census 2010, American Community Survey, 2010 5-year Estimates”

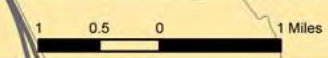
*Santa Fe Urban Area
Per Capita Income
2010 Census (ACS)*



Per Capita Income


- >\$80,000
- \$60,000-\$80,000
- \$40,000-\$60,000
- \$30,000-\$40,000
- \$20,000-\$30,000
- <\$20,000

“Source: U.S. Census 2010, American Community Survey, 2010 5-year Estimates”




Where is our Center ?


Legend


 Geographic Center

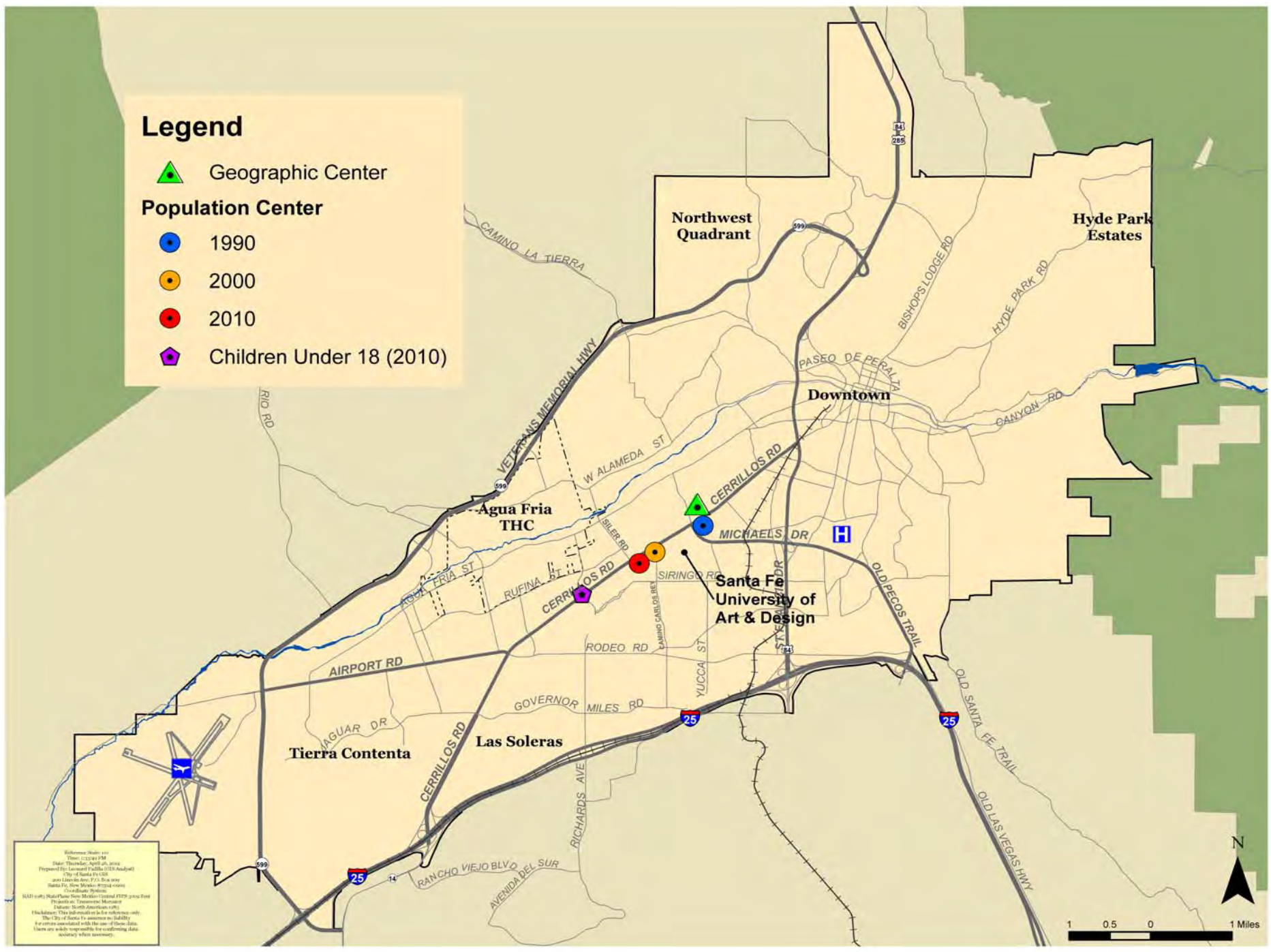
Population Center

 1990

 2000

 2010

 Children Under 18 (2010)



Reference Scale: 1:100,000
Date: December, April 2010
Prepared by: Lauren Padilla (GIS Analyst)
City of Santa Fe, CO
and Linda Lee, FPA, Inc. (GIS)
Santa Fe, New Mexico 87505
Coordinate System:
NAD 83 State Plane New Mexico Central FIPS 5003 Feet
Projection: Transverse Mercator
Datum: North American 83
Disclaimer: This information is for reference only.
The City of Santa Fe assumes no liability
for errors associated with the use of these data.
Users are solely responsible for confirming data
accuracy when necessary.

1 0.5 0 1 Miles



Age

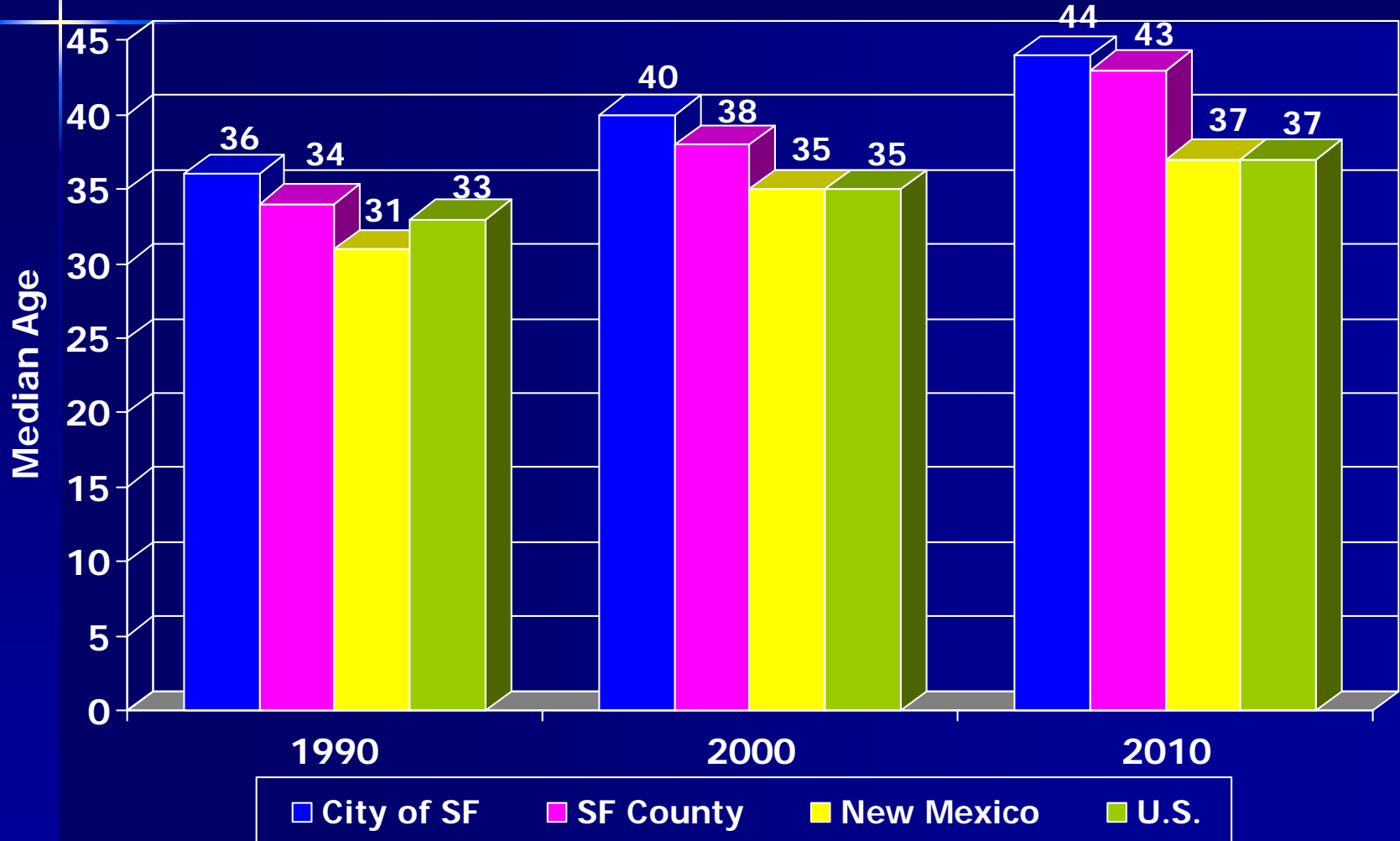
in

Santa Fe, New Mexico & U.S.

How Old Are We ?

Median Ages City, County State, U.S. – by Decade

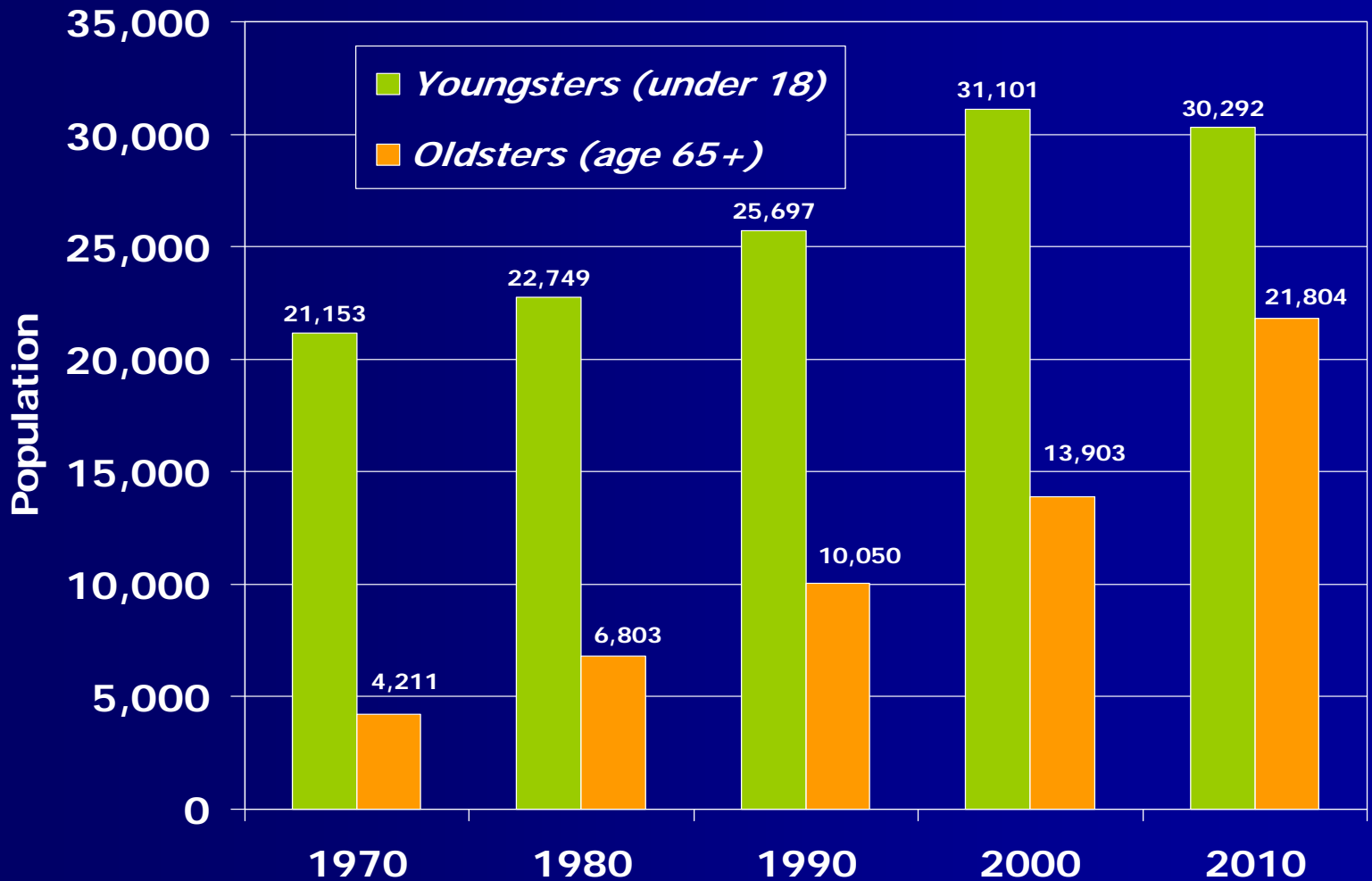
Source: U.S. Census 1990; 2000 (SF-1, Table P013); 2010 (SF-1, Table P13)



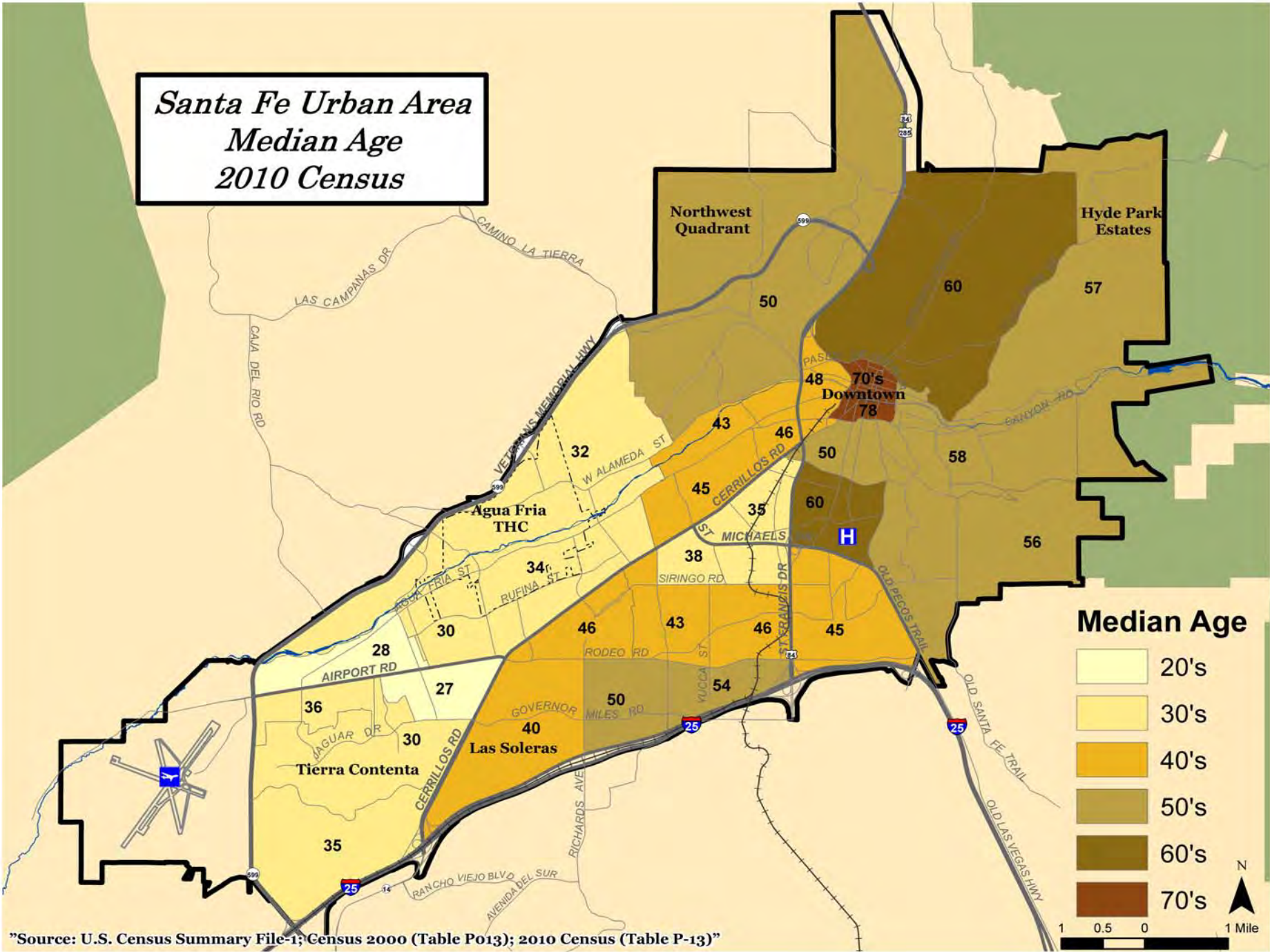
Youngsters & Oldsters

Age-group population change in Santa Fe County
1970, 1980, 1990, 2000, 2010

Source: University of New Mexico, Bureau of Business & Economic Research

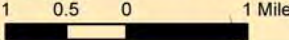
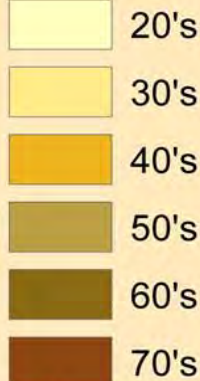


*Santa Fe Urban Area
Median Age
2010 Census*



"Source: U.S. Census Summary File-1; Census 2000 (Table P013); 2010 Census (Table P-13)"

Median Age



Did You Know...?

- The City of Santa Fe added more housing units (6,667) than people (5,744) from 2000 – 2010. S.F. County added somewhat more people (14,878) than housing units (13,566).
- Children - While the U.S. added **8.7 million** children during the 1990s, we added only **1.9 million** last decade.

| Housing Vacancy Rate: | <u>2010</u> | <u>2000</u> |
|-----------------------|-------------|-------------|
| City of Santa Fe | 14.3% | 9.7% |
| Santa Fe County | 13.1% | 9.0% |
| New Mexico | 12.2% | 13.1% |
| United States | 11.4% | 9.0% |

Source: U.S. Census 2000 SF-1 (Tables H001, P001, QT-H1, QT-P1); 2010 SF-1 (Tables H1, P1, QT-H1, QT-P1).

Santa Fe County Communities

Selected County Communities 2000 & 2010 Census

Las Campanas

| | 2000 | 2010 |
|---------------------|------|------|
| Population | 244 | 604 |
| Hispanic Population | 8 | 59 |
| Housing Units | 163 | 479 |
| Median Age | 53 | 59 |
| Kids | 30 | 91 |

West of 599

| | 2000 | 2010 |
|---------------------|------|-------|
| Population | 990 | 1,945 |
| Hispanic Population | 306 | 642 |
| Housing Units | 445 | 1,092 |
| Median Age | 41 | 53 |
| Kids | 171 | 403 |

Agua Fria (U.A.)

| | 2000 | 2010 |
|---------------------|-------|-------|
| Population | 2,051 | 2,800 |
| Hispanic Population | 1,625 | 2,219 |
| Housing Units | 760 | 1,134 |
| Median Age | 31 | 36 |
| Kids | 607 | 716 |

Tano/Las Tierras

| | 2000 | 2010 |
|---------------------|-------|-------|
| Population | 1,199 | 2,155 |
| Hispanic Population | 61 | 356 |
| Housing Units | 744 | 1,354 |
| Median Age | 55 | 59 |
| Kids | 124 | 220 |

Tesuque

| | 2000 | 2010 |
|---------------------|------|------|
| Population | 909 | 925 |
| Hispanic Population | 324 | 252 |
| Housing Units | 541 | 718 |
| Median Age | 48 | 56 |
| Kids | 134 | 78 |

La Cienega/ Cieneguilla

| | 2000 | 2010 |
|---------------------|-------|-------|
| Population | 3,007 | 3,819 |
| Hispanic Population | 2,129 | 3,069 |
| Housing Units | 1,079 | 1,340 |
| Median Age | 32 | 35 |
| Kids | 860 | 1,172 |

Rancho Viejo/ S. I-25 Area

| | 2000 | 2010 |
|---------------------|-------|-------|
| Population | 1,292 | 4,629 |
| Hispanic Population | 667 | 2,145 |
| Housing Units | 518 | 1,910 |
| Median Age | 41 | 39 |
| Kids | 284 | 930 |

Eldorado

| | 2000 | 2010 |
|---------------------|-------|-------|
| Population | 5,799 | 6,866 |
| Hispanic Population | 783 | 780 |
| Housing Units | 2,553 | 3,100 |
| Median Age | 44 | 55 |
| Kids | 1,371 | 922 |

Cañada de Los Alamos

| | 2000 | 2010 |
|---------------------|------|------|
| Population | 358 | 434 |
| Hispanic Population | 160 | 182 |
| Housing Units | 165 | 222 |
| Median Age | 41 | 45 |
| Kids | 90 | 98 |

Tierra Contenta

Las Soleras

Northwest Quadrant

Hyde Park Estates

Downtown

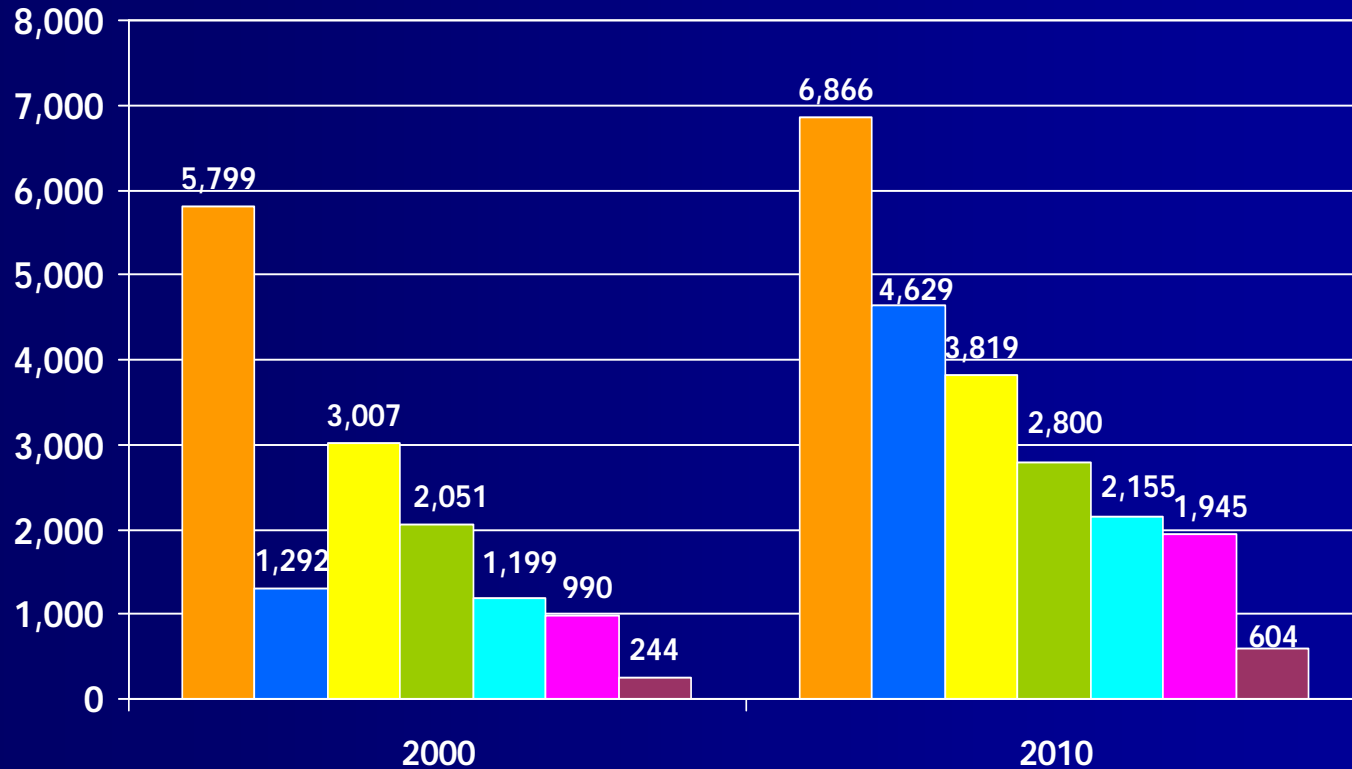
Agua Fria THC

County Communities Population 2000, 2010

(Areas defined by Census Tracts)

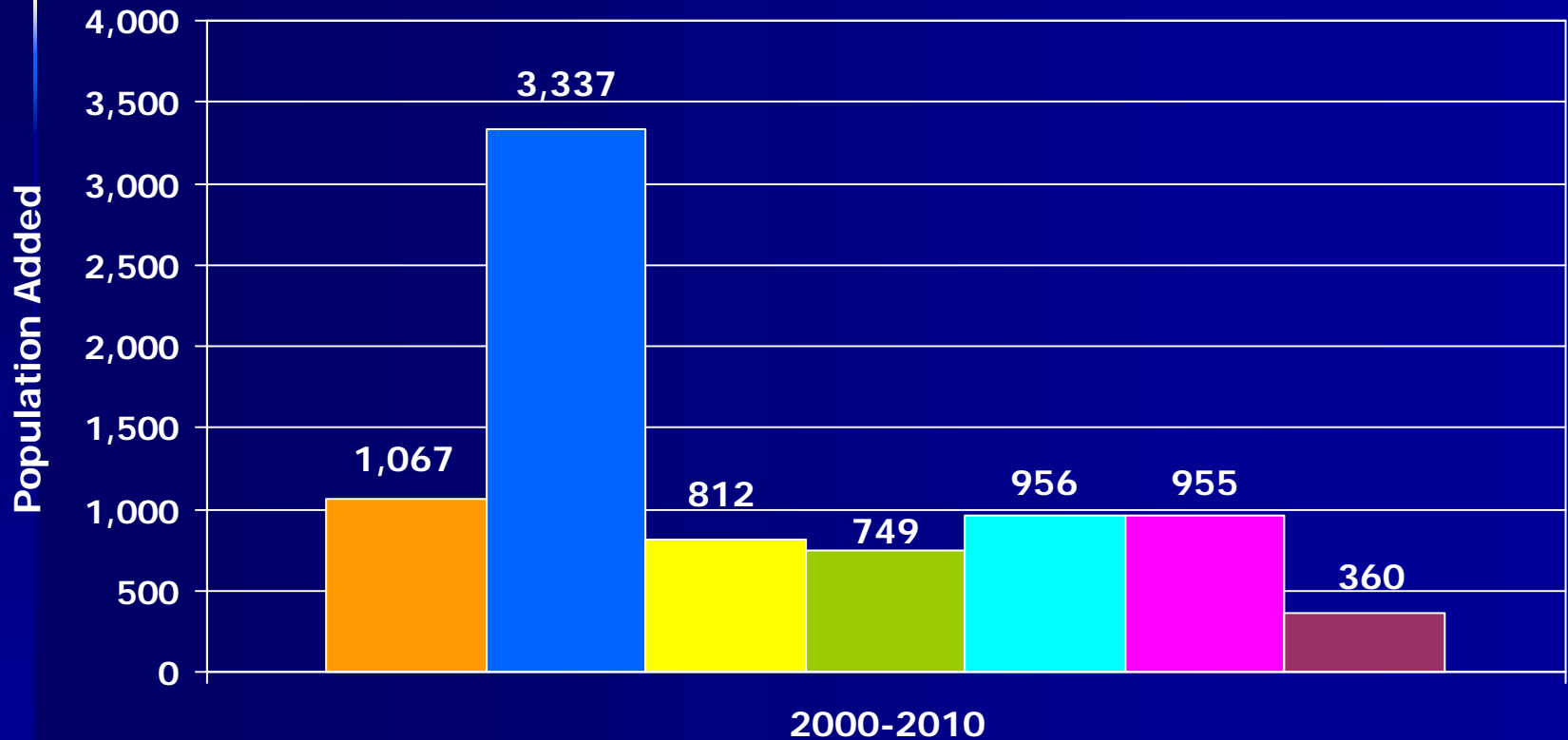
Source: U.S. Census 2000 (SF-1, Table P001); 2010 (SF-1, Table P1) Census Tract & CDP

Population



Growth of County Communities 2000-2010

Source: Derived from Census 2000 & 2010 (Summary File 1; Tables P001 & P1)



Eldorado

Rancho Viejo

La Cienega

Agua Fria

Tano/La Tierra

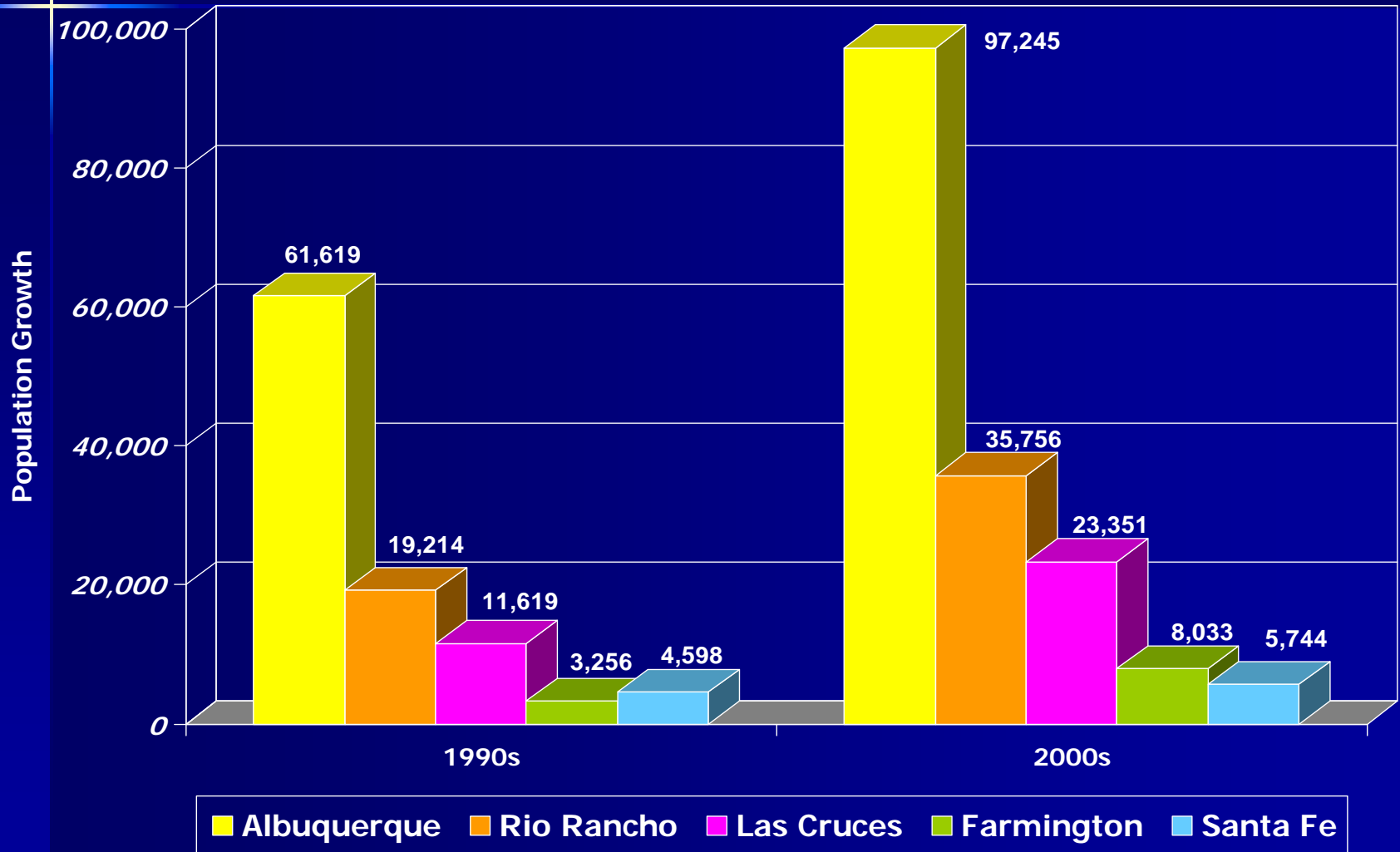
W. of 599

Las Campanas

**Santa Fe
&
Other NM Cities & Counties**

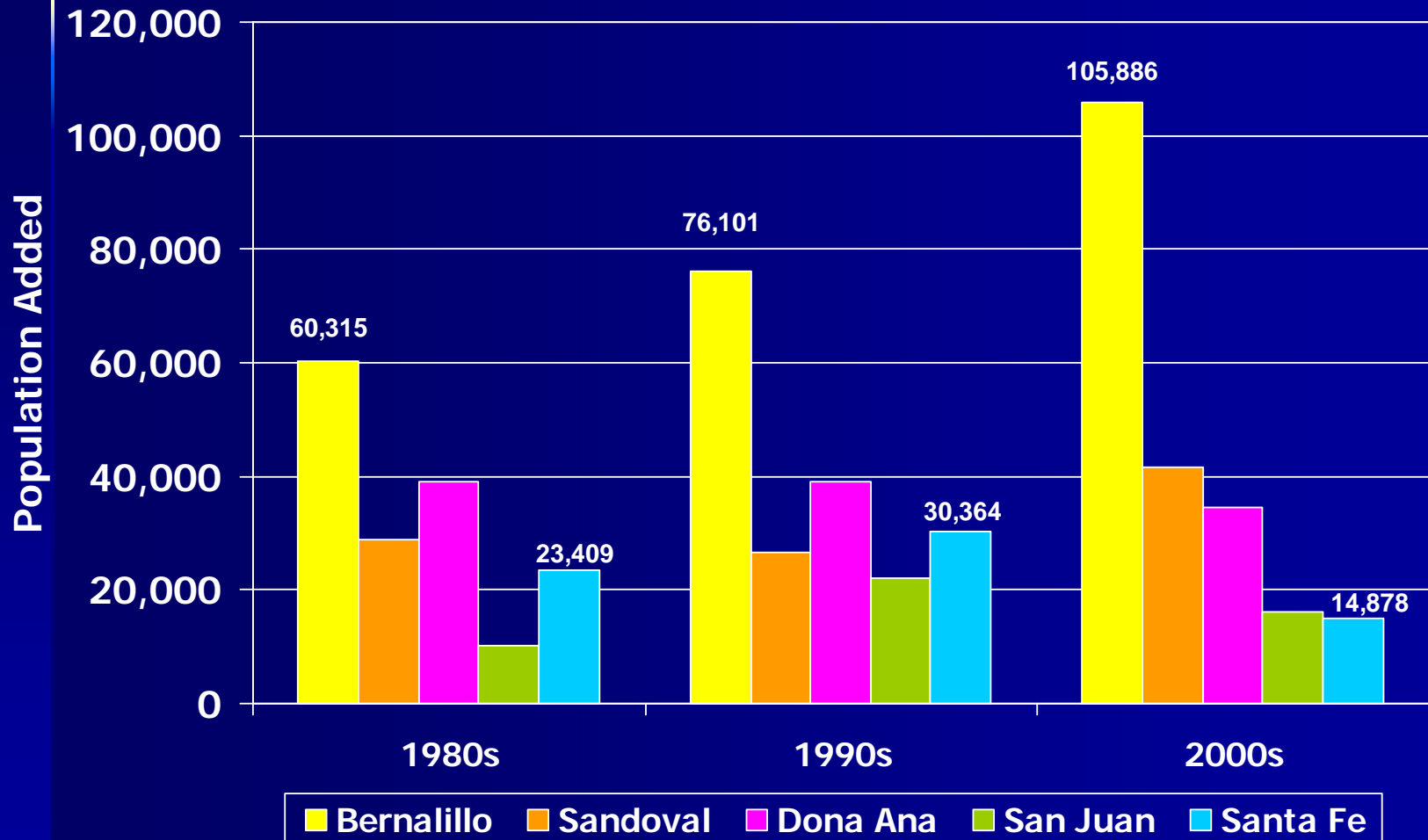
New Mexico Cities Growth By Decade, 1990s & 2000s

Source: UNM-BBER



New Mexico's Largest Counties Population Growth By Decade

Source: UNM-BBER



County Share of New Mexico Growth

| <u>County</u> (City), (current % of NM Pop) | <u>1980s</u> | <u>1990s</u> | <u>2000s</u> (*) |
|---|--------------|--------------|-------------------------|
| Bernalillo & Sandoval, (ABQ & Rio Rancho) | 42% | 34% | 61% (39%) |
| Santa Fe, (Santa Fe) | 11% | 10% | 6% (7%) |
| Dona Aña (Las Cruces) | 18% | 13% | 14% (10%) |
| San Juan (Farmington) | <u>5%</u> | <u>7%</u> | <u>7%</u> (<u>6%</u>) |
| TOTAL | 76% | 64% | 88% (62%) |

(*) Current % of New Mexico Population

Source: UNM-BBER; U.S. Census data derived.

THANK YOU

Presented by:

Reed Liming
Long Range Planning Director
City of Santa Fe
Ph: 955-6610
rcliming@santafenm.gov