



# ***Santa Fe's Walkability***

## ***Mapping the City's Urban Strengths***

**City of Santa Fe**  
**Land Use Department**  
**Long Range Planning Division**



Photo courtesy: Trover, Creative Commons





# ***Santa Fe's Walkability***

## ***Mapping the City's Urban Strengths***

**Lisa Martinez, Land Use Department Director**  
**Reed Liming, Long Range Planning Division Director**  
**Richard Macpherson, Senior Planner**  
**David Barsanti, G.I.S. Analyst**  
**Gil Martinez, Graphics Designer**

**July, 2017**

*Walk Score® is a registered trademark of Redfin Real Estate, Seattle, WA. A special thanks to Aleisha Jacobson at Redfin's Walk Score® office.*

## Santa Fe's Walkability ... Defining the City's Urban Core

Santa Fe is famed for its historic buildings and narrow streets. Visitors and residents value the historic part of the city for its walkability, reflecting how towns and cities felt to residents and visitors before the dominance of the automobile. Since World War II, however, much of Santa Fe has reflected land development patterns with more spread-out, suburban-style subdivisions and large commercial tracts with over-sized parking lots. This development trend is based on the car and reflects modern development patterns found in virtually every U.S. town and city.

### Walkability

While Santa Feans may enjoy walking around their neighborhood and enjoy the area where they live, "walkability" as used in this report defines those areas in which residents are a relatively short walk from their homes to a destination such as a park, school or grocery store. This type of walkability is what usually distinguishes pre-World War II city development from post-war development patterns. Americans have become increasingly interested in reclaiming much of that walkability that has been lost over the decades and missing in new developments. As a result, there has been increased interest in determining how walkable a place is ... whether old or new.

Recent studies have shown that many Americans are spending a larger part of their household budget on transportation in the form of cars, while housing costs have been increasing faster than paychecks and availability of well-paying jobs. As a result, many are feeling squeezed by the basic costs of daily living. Meanwhile, Americans are struggling with obesity and related health issues due, in part, to a lack of walking and adequate exercise. These are often cited as the more recent side effects of suburban land development patterns.

### Measuring Walkability

Measuring walkability and understanding the "ingredients" that are needed to make a place more walkable has gained increasing interest. The following analysis shows those areas of Santa Fe that have the greatest levels of walkability as measured by the nearness (usually a 5-10 minute walk) of key daily needs and desires of residents, including: Schools, Parks, Grocery Stores, Restaurants, Errands, Shopping and Cultural Activities.

Walk Score® is a tool used to determine which parts of Santa Fe are the most walkable and therefore, from a planning standpoint, reflect the most efficient uses of land. These are neighborhoods and other residential areas that are within a relatively easy walk of the various destinations listed above. Many of these areas are known to residents based on personal experience, but when mapped, help to explain the city's strengths (walkable and more efficient) and its weaknesses (car dependent and less efficient). It provides policy makers with a tool to determine what is in the best interest of the city's future when it comes to reviewing and approving new land development proposals as well as where capital improvement funds, and how new facilities, might be optimized.

## Santa Fe's Overall Walkability

Santa Fe's Overall Walkability Map shows the most walkable parts of Santa Fe, when all destinations for the seven categories with the separate Walk Score® measurements are combined. The map shows two primary zones of walkability, "Very Walkable" (walk scores® of 70-100) and "Somewhat Walkable" (walk scores® of 50-69).

**Very Walkable** (most or all daily trips can be made on foot) – Santa Fe's "Very Walkable" areas include:

- **Downtown & Surrounding Neighborhoods** – This includes some of the Downtown & Eastside Historic District, as well as the entire Don Gaspar and Westside-Guadalupe Historic Neighborhoods. "Very Walkable" areas also extend south to Cordova Road.
- **St. Michael's Drive Corridor** – Both sides of St. Michael's Drive between Cerrillos Road and Pacheco Street which closely aligns with the city's Mid-Town LINC (local innovation corridor).
- **Cerrillos Road Corridor / Area Neighborhoods** – The residential areas on both sides of Cerrillos Road between Camino Carlos Rey and Richards Avenue.
- **Airport Road** – Includes a Small area between Jemez Road and Cerrillos Road along the south side of Airport Road.

## Walkability by Destination

The following series of maps shows walkability (or, "walkshed") within Santa Fe based on the specific destination that people travel to daily: schools, parks, restaurants, shopping, grocery stores, daily errands and cultural activities. The walkshed color (zone) shows the area surrounding a destination that is within a 5-10 minute walk. Ideally, these walksheds would include as many homes, apartments and residents as possible.

**Somewhat Walkable** (some daily trips can be made on foot) – Santa Fe's "Somewhat Walkable" areas include:

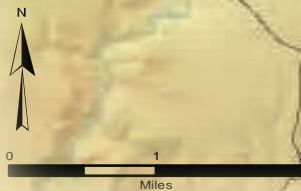
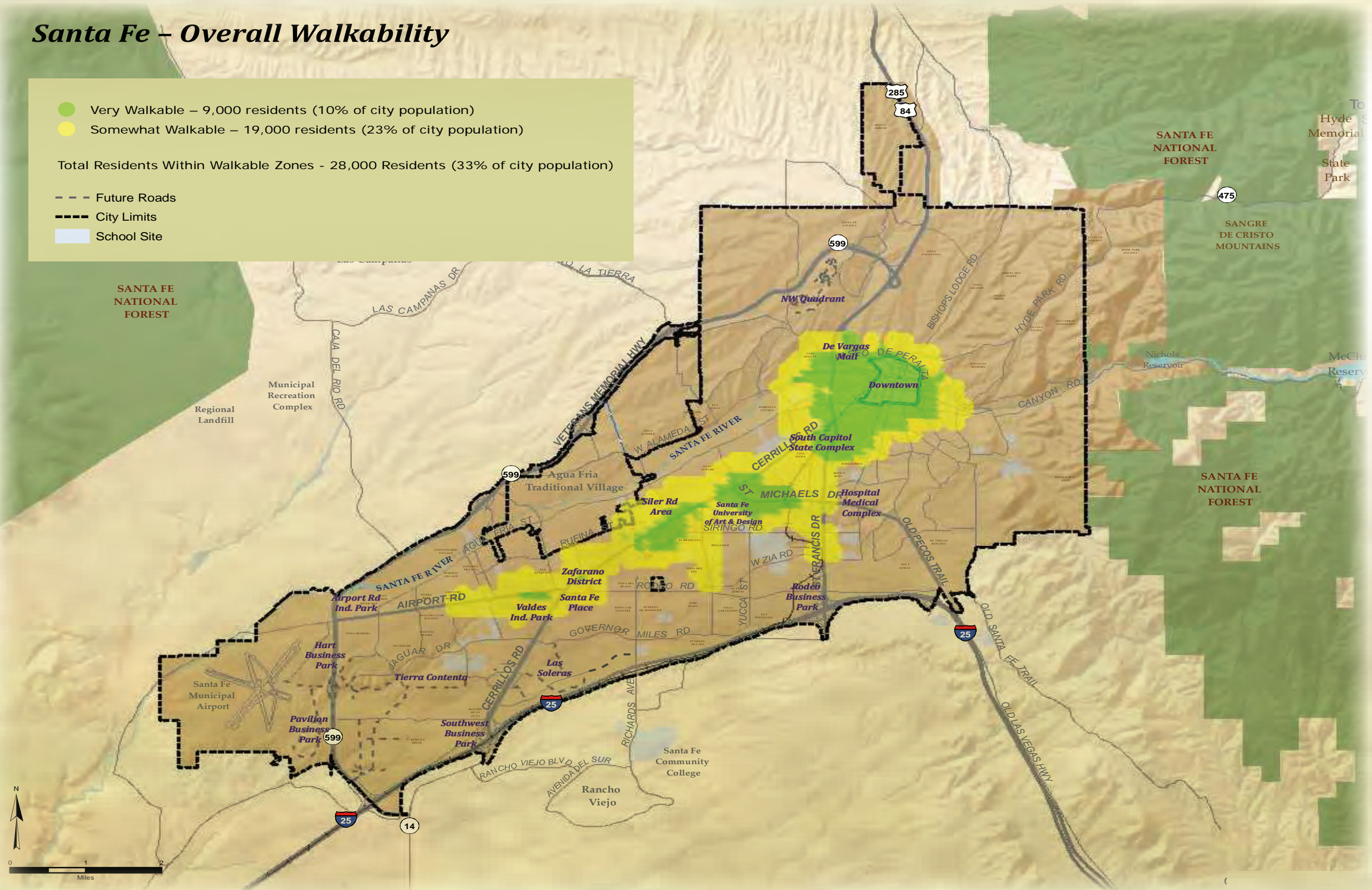
- **Downtown & Surrounding Neighborhoods** – As you move further away from the city's historic core and close-in neighborhoods (for example, west side of Casa Solana) walkability remains but at a lower level, where only some of the daily trips can be conveniently made on foot.
- **Cerrillos Road & Triangle Area** (Casa Alegre, Casa Linda, San Mateo/2nd Street/Pacheco Street Area)
- **St. Francis Drive Corridor (from Cordova to Zia Road)** – On the east side of St. Francis including some of the Mateo Heights subdivision; as well as apartments and condominiums between Zia and Siring Roads.
- **South St. Michael's Drive Area** (Plaza del Sur, South Ridge and Thomas Heights Neighborhoods)
- **Camino Carlos Rey Neighborhoods** (Bellamah, La Resolana, Vista del Sol)
- **Airport Road / Southside Neighborhoods** (Las Acequias, Vista Alegre Apts., Rancho Zia MHP)

# Santa Fe – Overall Walkability

- Very Walkable – 9,000 residents (10% of city population)
- Somewhat Walkable – 19,000 residents (23% of city population)

Total Residents Within Walkable Zones - 28,000 Residents (33% of city population)

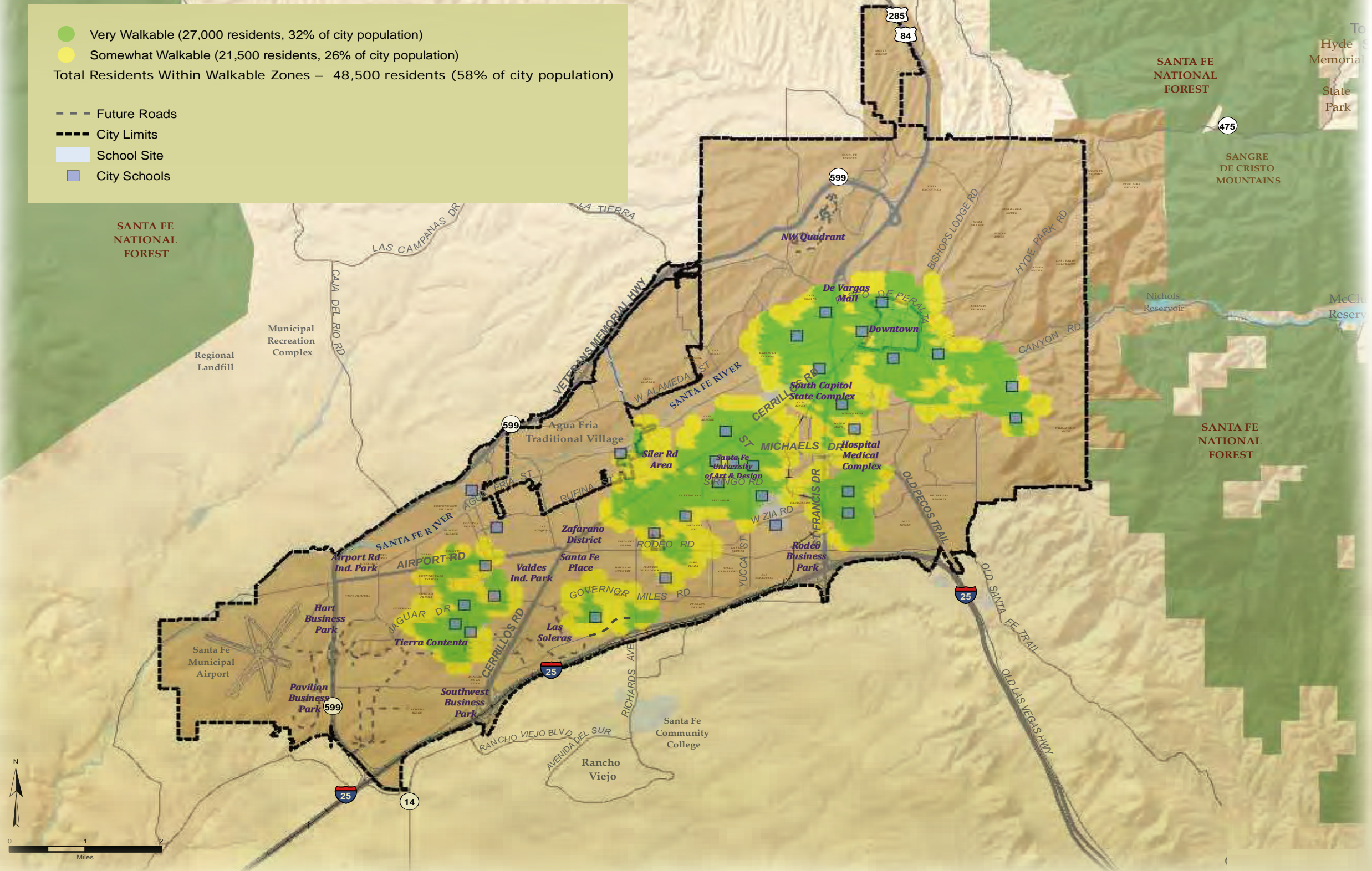
- - - Future Roads
- - - City Limits
- School Site



## Schools

Santa Fe's various elementary, middle and high schools may contain the best coverage of walkability of the various destinations within Santa Fe (see map) due to the fact that schools (especially elementary schools) are often placed in or near the center of larger neighborhoods and master-planned communities. As a result, schools often have a fairly even geographic distribution. The reason why schools show varying walk scores, or no walk score, is due to "Block Length" and "Intersection Distance" as measured by Walk Score®. Schools surrounded by, or near, neighborhoods with shorter block lengths and shorter intersection distances have higher scores in the vicinity.

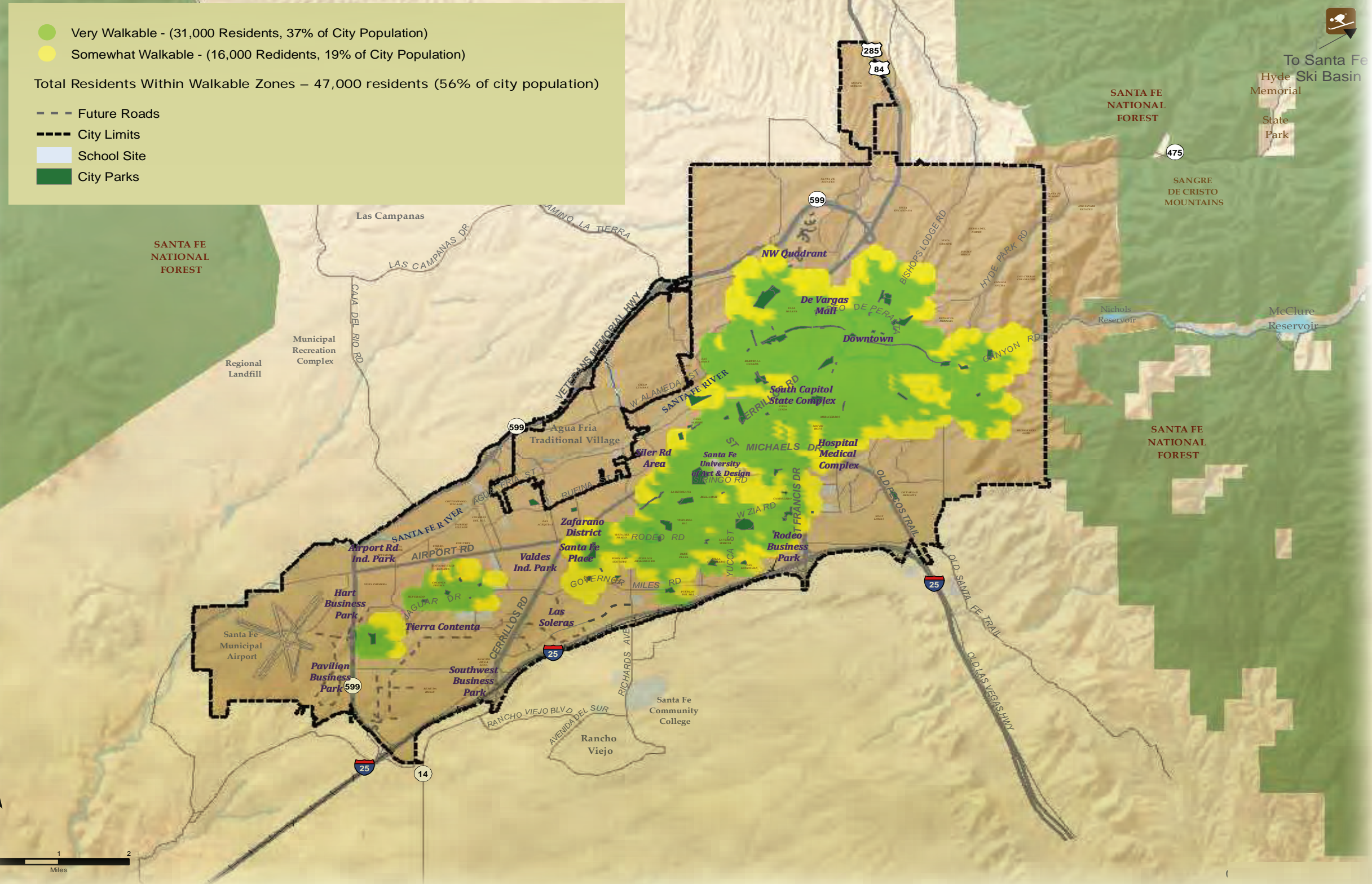
## Santa Fe – Schools Walkability



## Parks

Santa Fe's various city parks contain more dispersed walkability coverage in the city and serve about half the city's residents (47,000) within a reasonable walking distance. This is similar to the size of population within reasonable walking distance of the city's schools, but somewhat less. Neighborhoods with some of the strongest walkability to various city parks include: westside neighborhoods – Casa Solana, Barrio La Cañada and Casa Alegre; Southside neighborhoods – Bellamah and Candelerero as well as the historic neighborhoods on the south and east side of downtown.

## Santa Fe - Parks Walkability

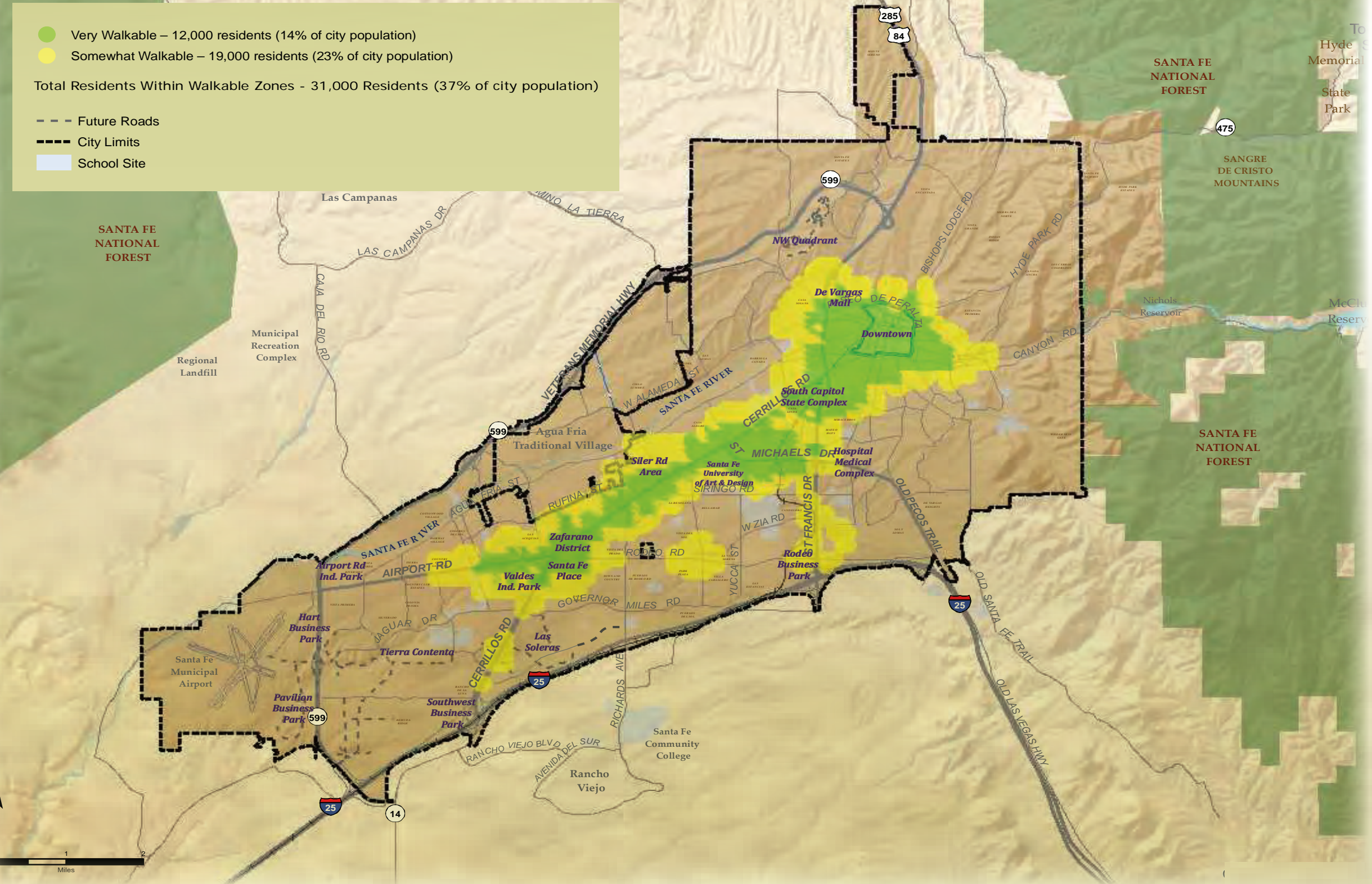




## Restaurants

Dining out in America has become a daily routine and a much bigger part of the American household budget during recent decades. Many restaurants, like grocery stores, are located along or very near major roadways, but there are areas such as Canyon Road that contain restaurants in walkable locations for those living in the Downtown & Eastside Historic District. Downtown and the surrounding area also contain many restaurants that may serve a large visitor and tourist population, but are also walkable from residential areas immediately surrounding Downtown.

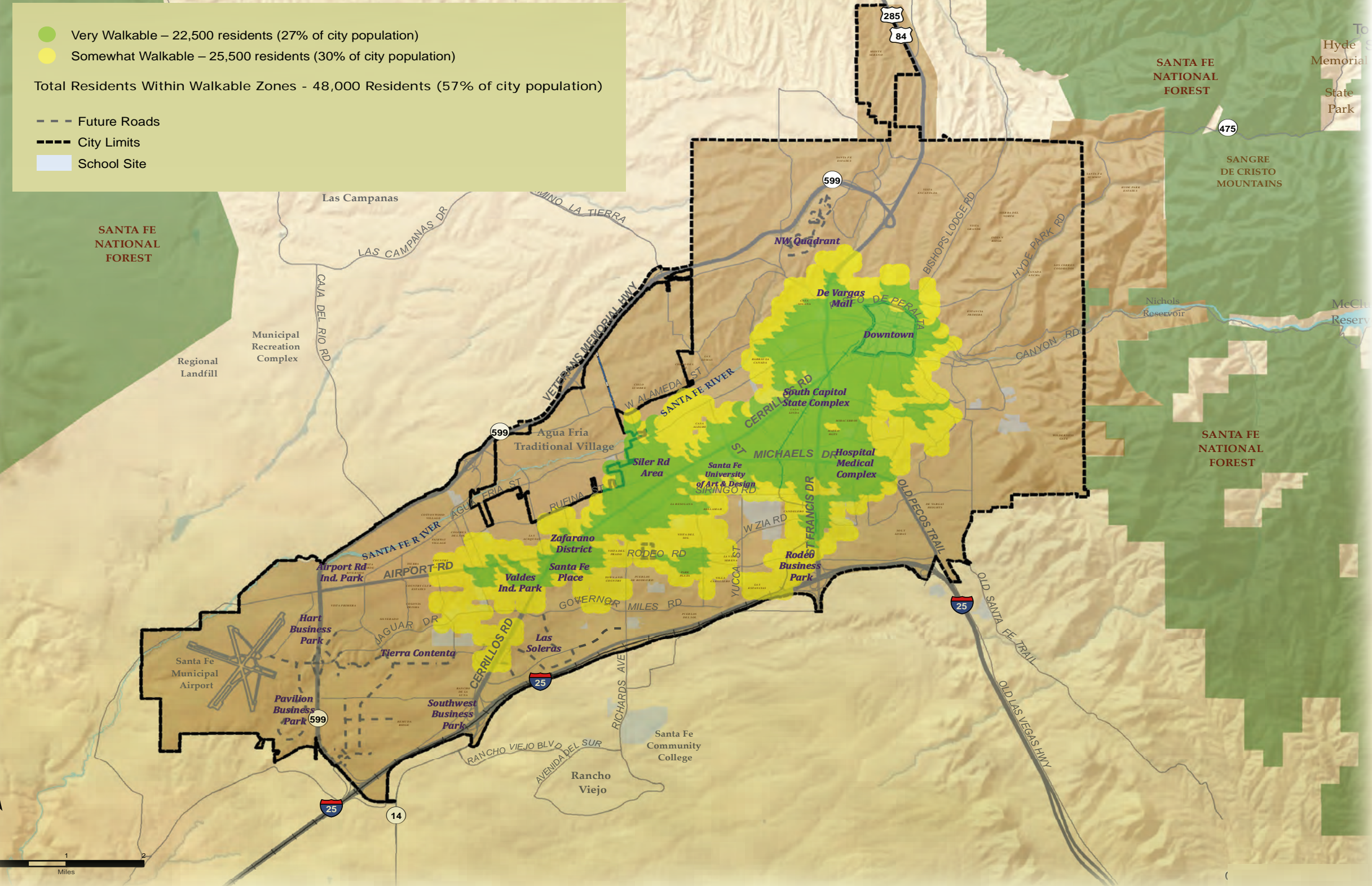
## Santa Fe - Restaurants Walkability



## Errands

Daily errands often include trips to the nearest drugstore or other smaller convenience store. Common personal and household items are often found in these locations that require daily or frequent trips. The Errands Walkability Map includes many of the areas already shown as walkable on other maps. However, the Errands map adds the hospital and medical office area along St. Michaels Drive east of St. Francis Drive. Medical offices and the hospital can be destinations for frequent trips from home.

## Santa Fe - Errands Walkability

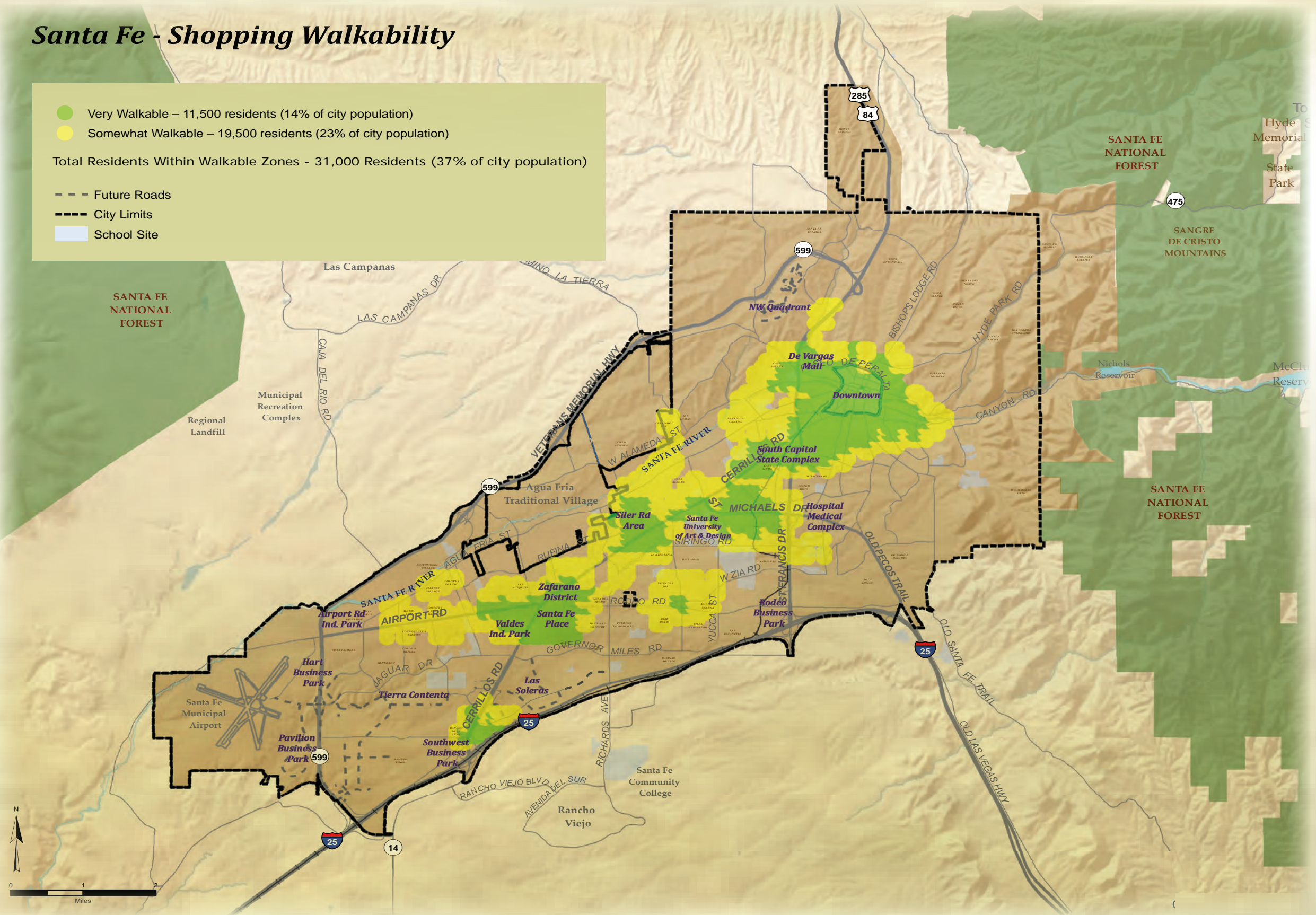


## Shopping

Shopping usually occurs at major national chain department stores, but also occurs at smaller, locally-owned stores and boutiques. Shopping for items such as clothing and appliances may not have the frequency of the “daily errand” for personal or household items, but consumer purchasing does account for nearly 70% of the American economy, so larger retail purchases are fundamental to modern daily life.

## Santa Fe - Shopping Walkability

- Very Walkable – 11,500 residents (14% of city population)
  - Somewhat Walkable – 19,500 residents (23% of city population)
- Total Residents Within Walkable Zones - 31,000 Residents (37% of city population)
- - - Future Roads
  - - - City Limits
  - School Site

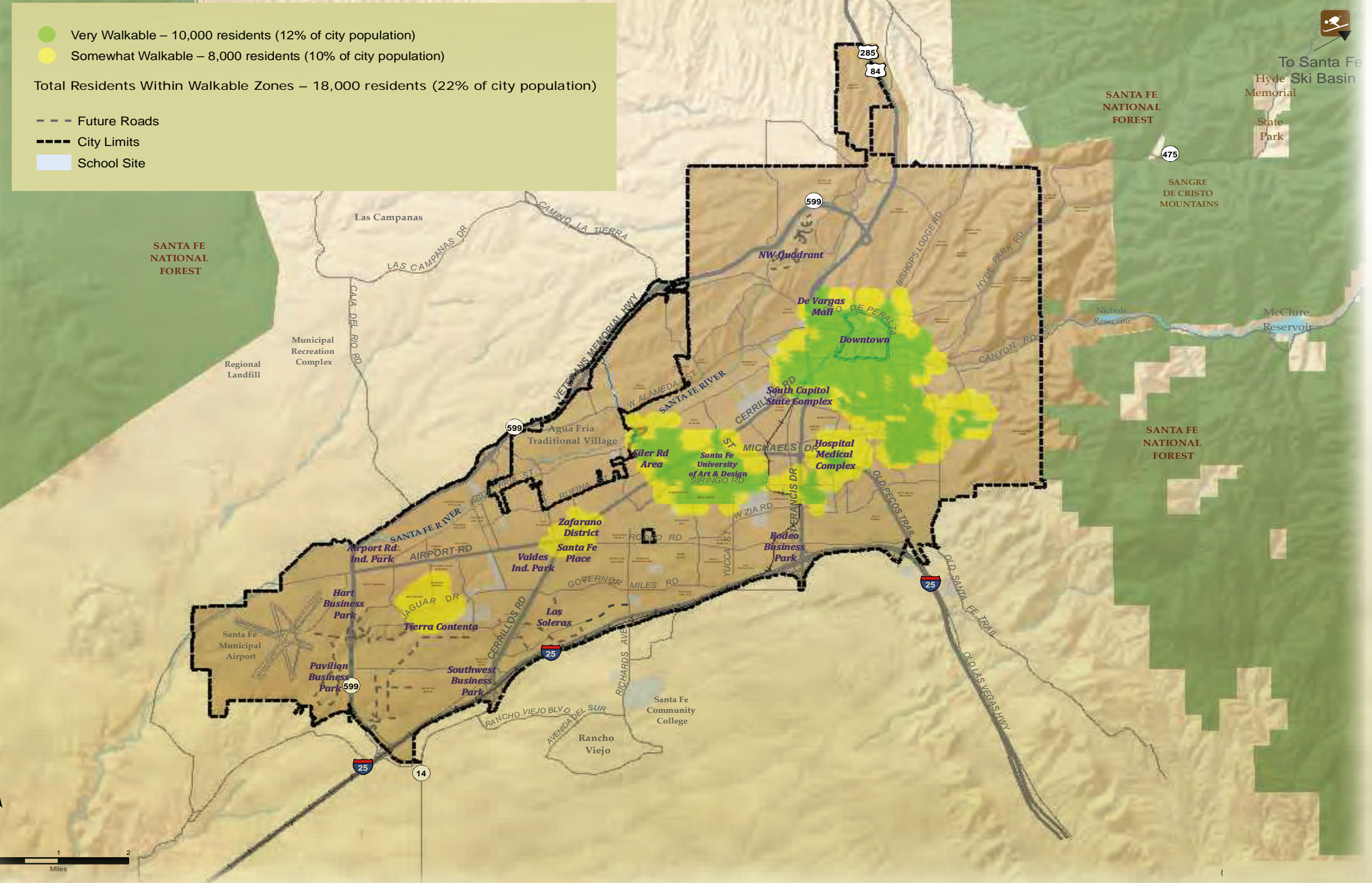


## Cultural Activities

Entertainment in its various forms (theaters, art galleries, museums, sport venues, etc.) plays a significant role in the life of our cities. The degree to which they can be put in close proximity to residential areas allows for greater walkability and less car dependency for their use.

The Southside Library in Tierra Contenta and the Regal Cinemas in the Zafarano District are the centers of walkable areas beyond the Downtown and St. Michaels Drive areas.

## Santa Fe - Cultural Activities Walkability



## Santa Fe's Walkability – Conclusions

While Santa Feans throughout the city may enjoy walking around their neighborhood and may thoroughly enjoy the area where they live, “walkability” as used in this report defines those areas in which residents are just a relatively short walk from their homes to a destination such as a park, school, grocery store, etc. Still, many residential areas appear to be car-dependent. Attempting to retro-fit many or all neighborhoods and residential areas into “walkable zones” is not the goal of this report, nor should it be a guiding goal of the city government. Often, a walkable zone is created only by a confluence of a number of factors: Higher residential density, one or more major roadways bisecting or bordering an area and previously established centers of activity.

There are no quick solutions to adding areas or neighborhoods to those that already enjoy some level of walkability as shown on the maps in this report. Simply adding higher density infill residential development to an existing developed part of the city does not guarantee that an area, not currently in a walkable zone, will suddenly become walkable. However, the city can actively work to achieve the following:

- 1. Master-Planned Areas** – Encourage and ensure that newly developing large master-planned areas (i.e. Tierra Contenta, Las Soleras) are “walkable” by requiring higher-density residential and commercial development throughout the master-planned areas as construction occurs.
- 2. Existing Walkable Zones** – Improve and enhance those areas that are already “walkable” by focusing capital improvements in the public realm (i.e. streets, sidewalks, crosswalk striping, parks and other pedestrian enhancements) that strengthen already defined walkable zones.

The Overall Walkability map shows the city’s urban core, or to use a human anatomy analogy ... central nervous system. If cities are the drivers of American culture and the economy, then walkable zones within a city can be considered the core of a city’s culture and economy. The city should use the **Overall Walkability Map** to continually focus efforts to improve all aspects of the public realm which includes attention and improvements to parks and streetscapes in the walkable zones as experienced by pedestrians; not to the exclusion of other parts of the city, but to enhance and build on the city’s areas of urban/walkable strengths.

While master-planned areas are generally laid out, financed and built by private developers, the city can require densities, parks, street networks and streetscapes that will create the foundation for new walkable areas as the city expands. Concurrently, the city can be ensuring that a substantial part of its own capital improvement planning and budgets are being used to help improve those already existing walkable zones.