

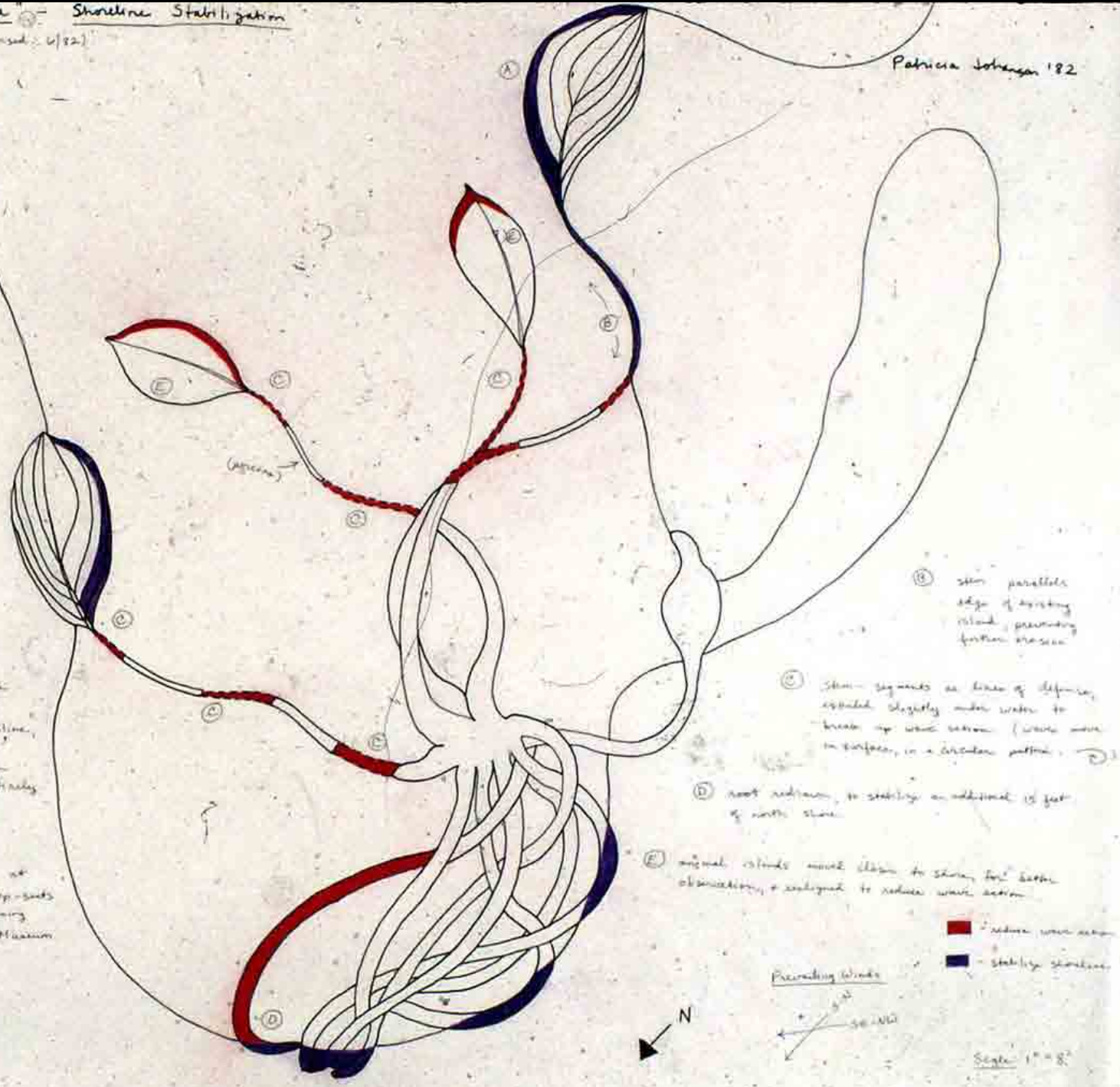




The north end of the Fair Park lagoon is currently eroding at the rate of 8 inches per year, primarily as a result of wave action.

The following change in this original (schematic) design should help stabilize the shoreline, and in conjunction with the planting of emergent vegetation should eliminate erosion entirely.

(A) leaf become bilobate at head of existing island (Stip-salts go down into water, causing steps in front of Dallas Museum of Fine Arts)



(B) stem parallels edge of existing island, preventing further erosion

(C) stem segments as lines of defense, extended slightly under water to break up wave action (waves move in surface, in a circular pattern)

(D) root network, to stabilize an additional 15 feet of north shore

(E) original stands moved closer to shore for better observation, + designed to reduce wave action

■ reduce wave action
■ stabilize shoreline



Scale 1" = 8"

















"Flora: Malt Road" - Planting Plan
(Paths Through Water, Plants, Fish, & Animals)



Gordon Johnson '82







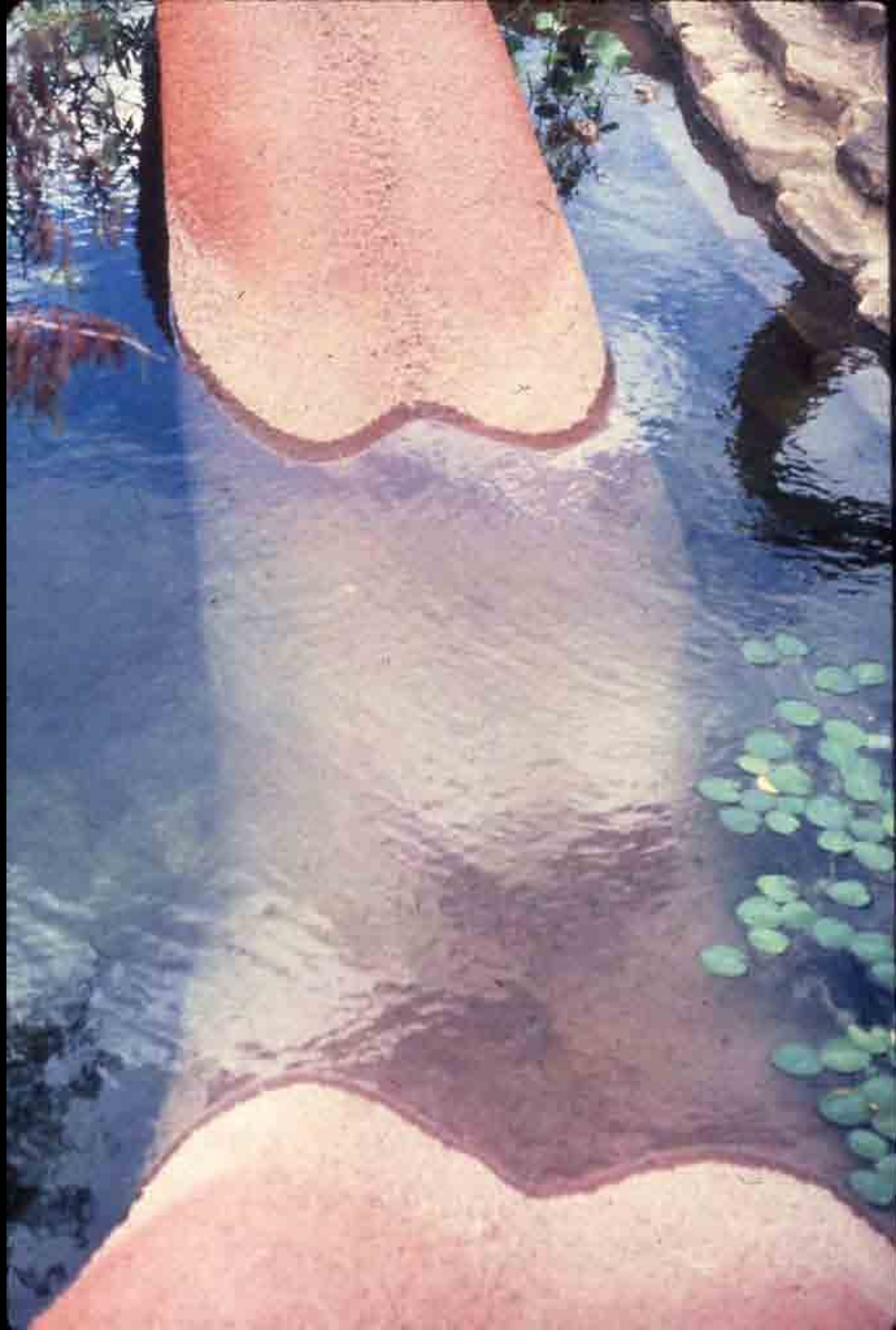


































Northbay/Oakmead Business Park

Lakeville Highway (SR116)

Aerated Lagoon

Booster Pump Station No. 1

Ellis Creek

Parcel "A"

Parcel "C"

Oxidation Pond (TYP)

Existing Forcemain

Pond No. 1

Pond No. 2

Pond No. 4

Pond No. 3

Pond No. 5

Pond No. 6

Pond No. 8

Pond No. 7

Pond No. 9

Pond No. 10

Existing Chlorine Contact Basin and Agricultural Reuse Pump Station

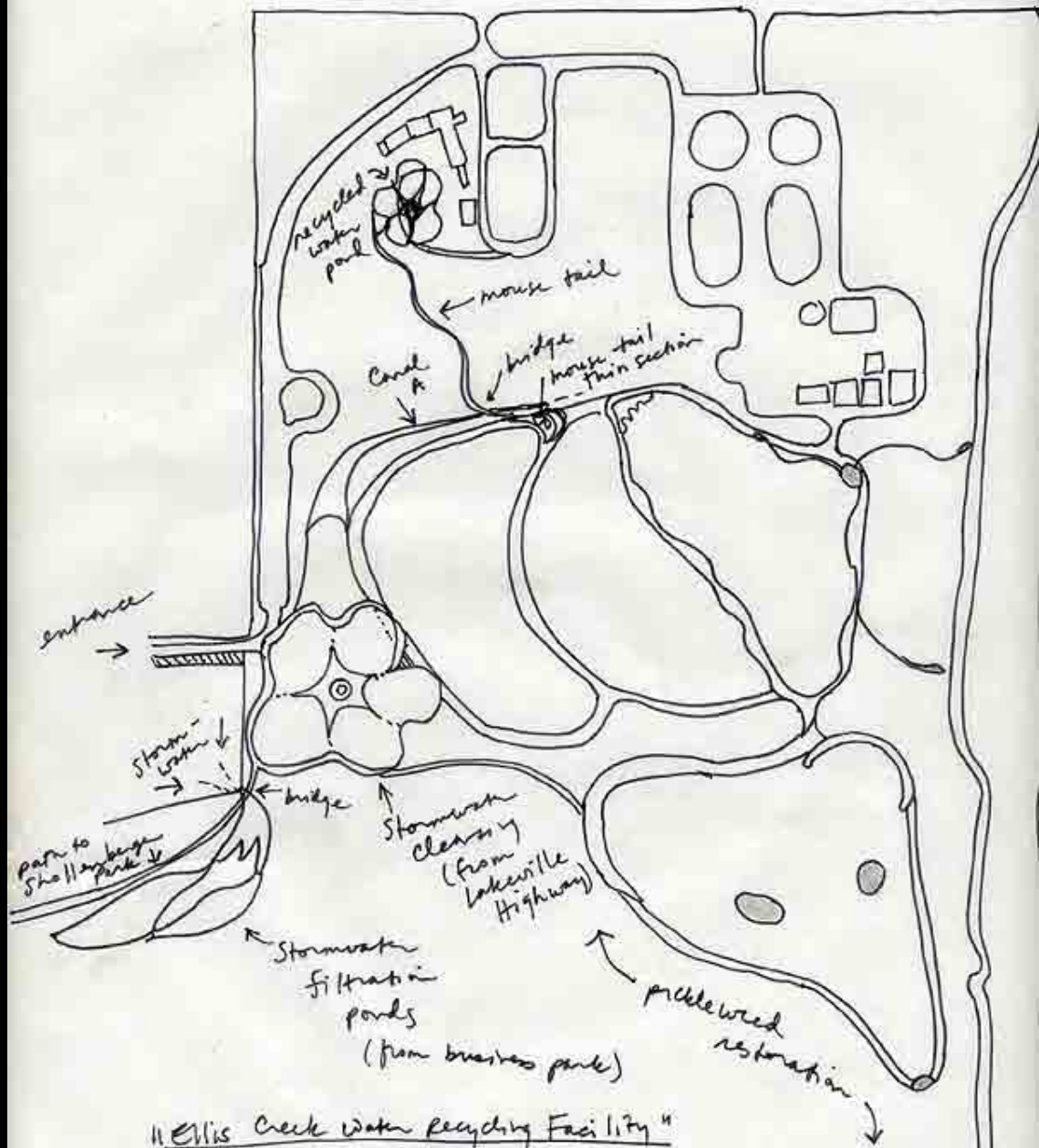
Disinfection Facilities

Outfall

Petaluma River

Outfall Maintenance

Date of Photo - 2/11/99 Scale: NTS

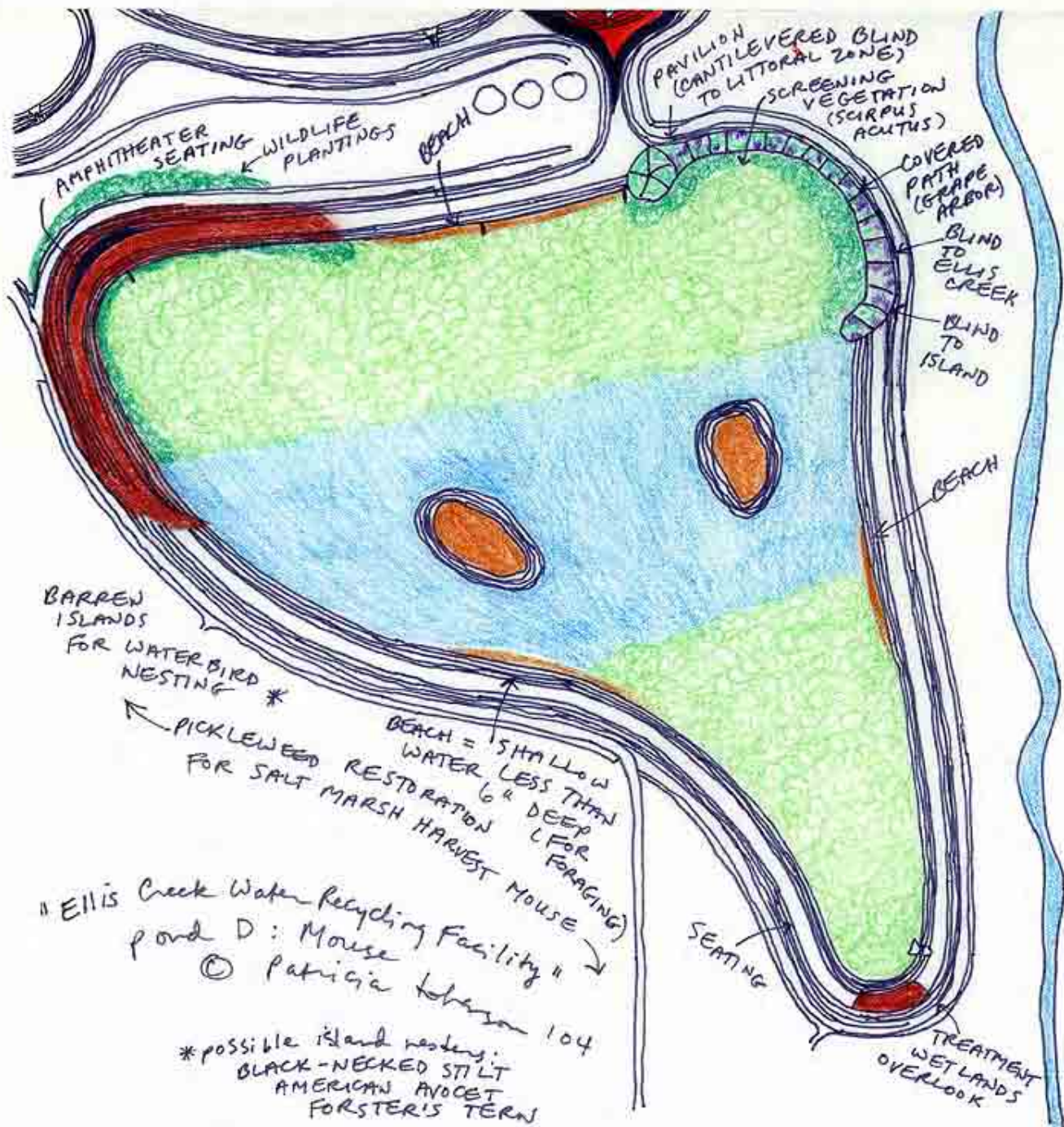


"Ellis Creek Water Recycling Facility"
 Petaluma, California
 Site location

© Patricia Johnson '04









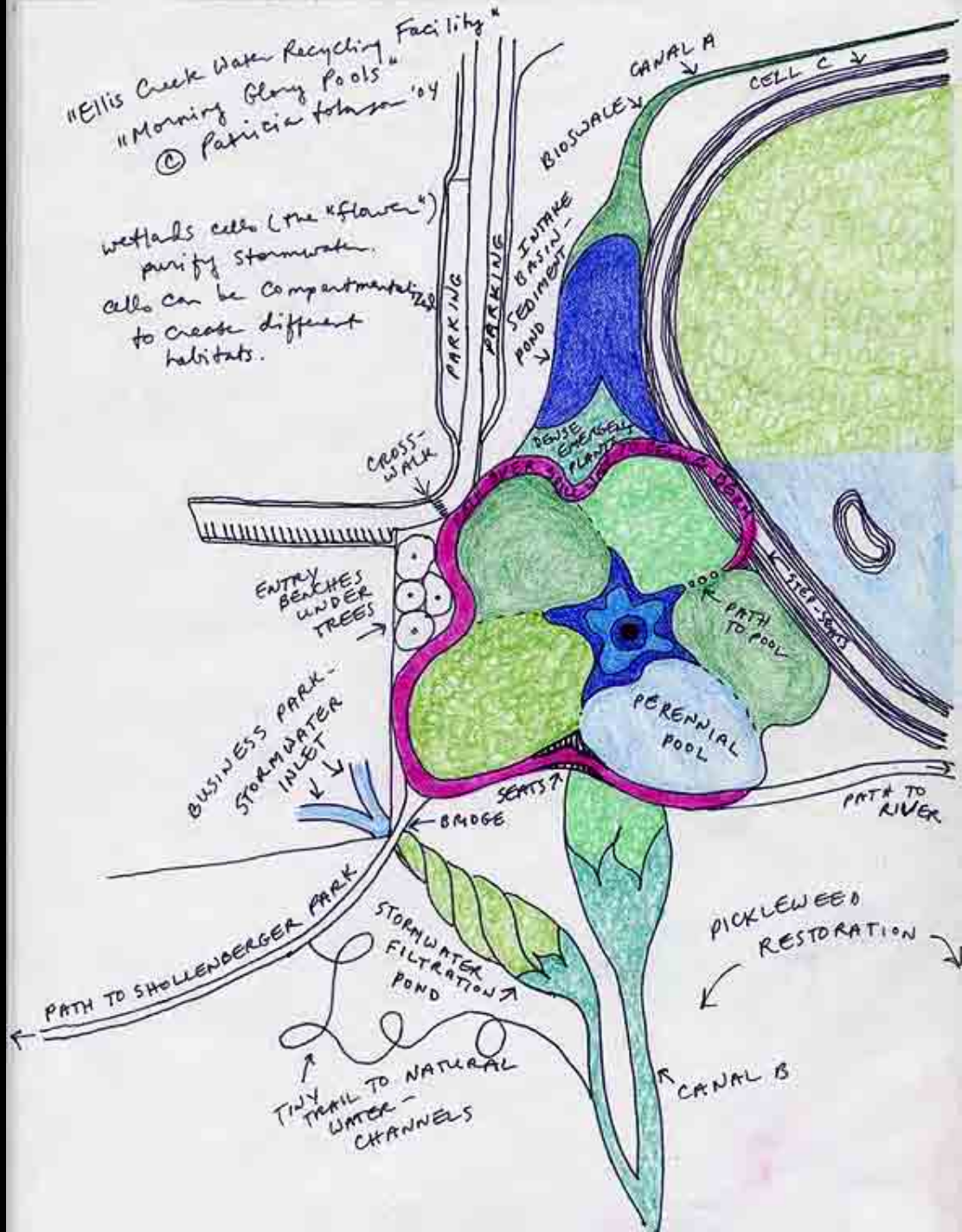
06/18/2008 02:05 pm



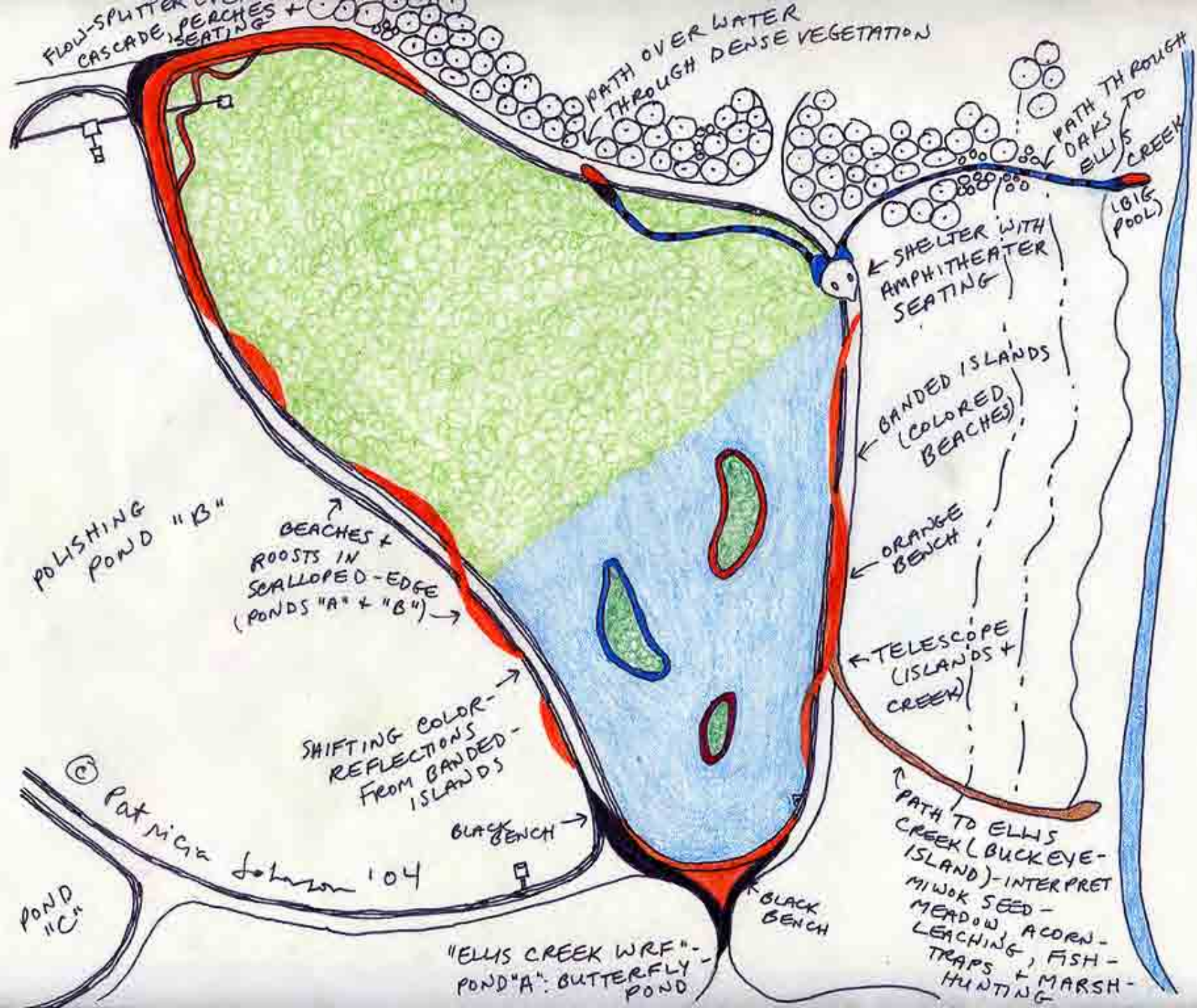


"Ellis Creek Water Recycling Facility"
"Morning Glory Pools"
© Patricia Johnson '04

wetlands cells (the "flowers")
purify stormwater.
cells can be compartmentalized
to create different
habitats.







FLOW-SPLUTTER CASCADE, PERCHES SEATINGS

PATH OVER WATER THROUGH DENSE VEGETATION

PATH THROUGH DAKES TO ELLIS CREEK

SHELTER WITH AMPHITHEATER SEATING

BANDIED ISLANDS (COLORED BEACHES)

ORANGE BENCH

TELESCOPE (ISLANDS + CREEK)

PATH TO ELLIS CREEK (BUCKEYE-ISLAND) - INTERPRET MIWOK SEED-MEADOW, A CORN-LEACHING, FISH-TRAPS + MARSH-HUNTING

BLACK BENCH

BLACK BENCH

POLISHING POND "B"

BEACHES + ROOTS IN SCALLOPED-EDGE (PONDS "A" + "B")

SHIFTING COLOR-REFLECTIONS FROM BANDED-ISLANDS

Patricia Johnson 104

"ELLIS CREEK WRF" - POND "A": BUTTERFLY POND

POND "C"

LBIG POOL







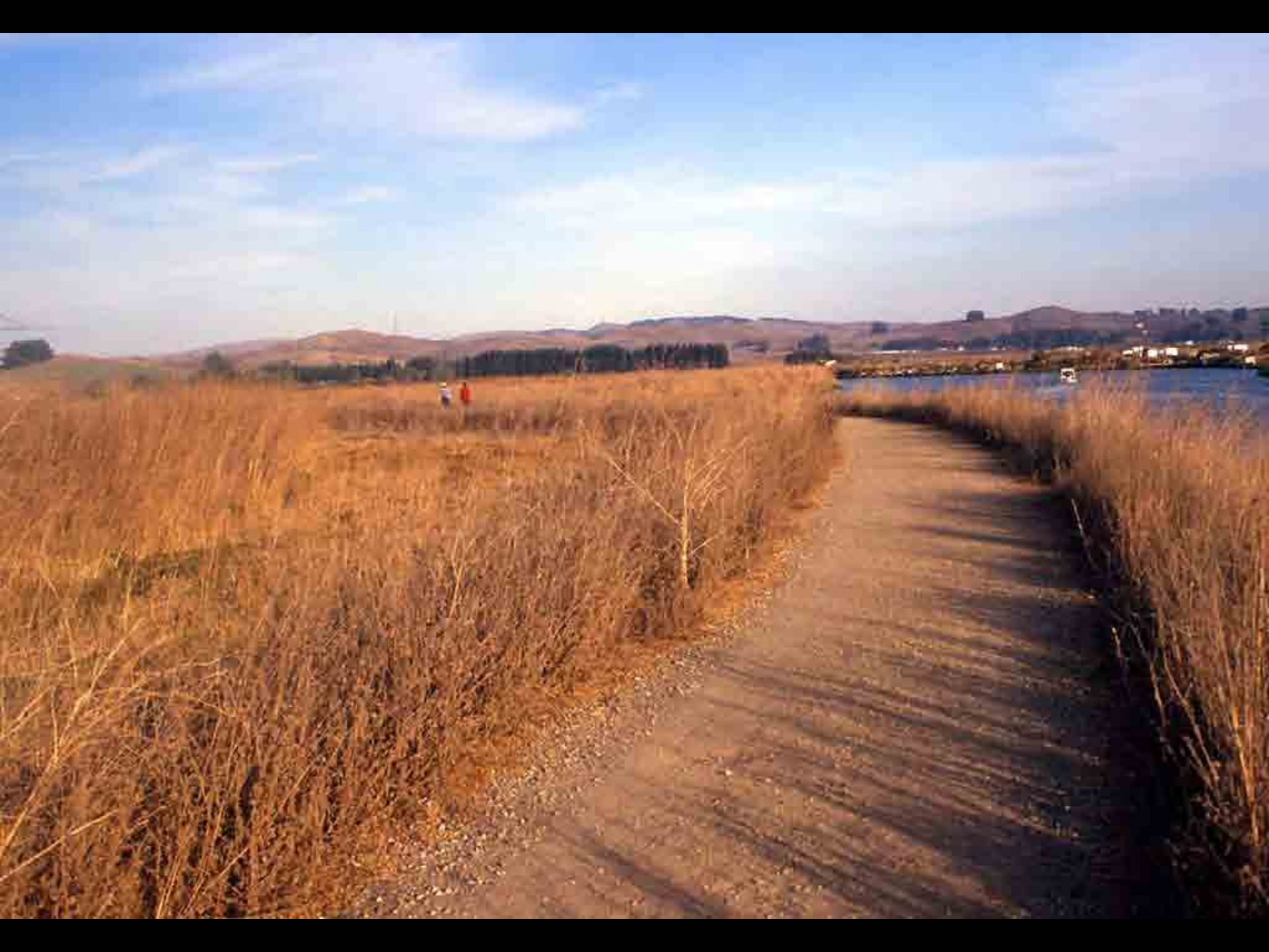






















"Hidden Hollow"
(vegetated corridor)
Parley's Creek
re-appears
from under highway

Stoments from building-
roofs feel "snake"

Creek overlook +
source of water in
mountains

green
hill
(wildlife
plants)

retaining walls
+ waterfalls

green wall
(wildlife
plants)

underground crossing

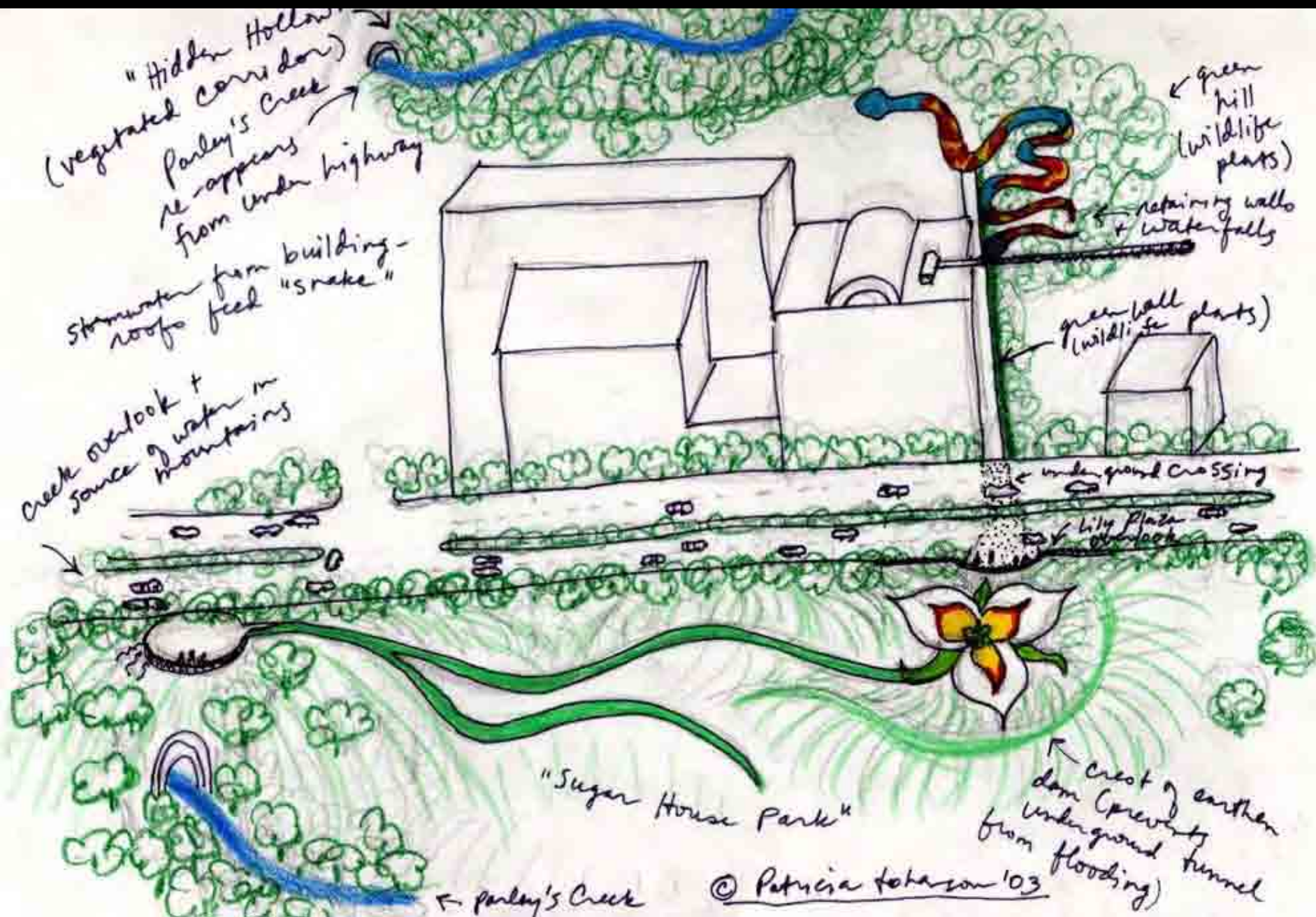
Lily Plaza
overlook

"Sugar House Park"

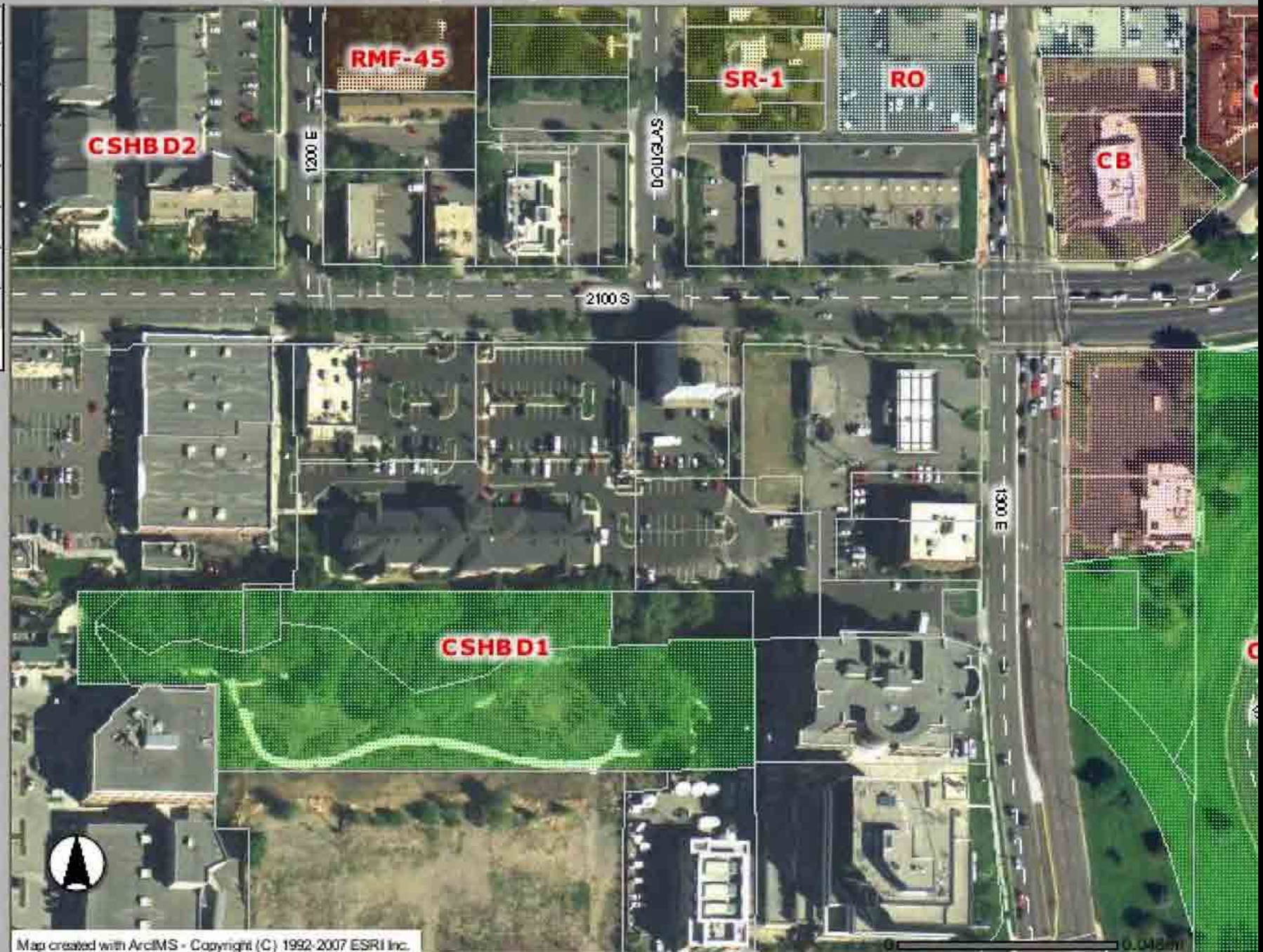
← crest of earthen
dam (prevents
underground tunnel
from flooding)

← Parley's Creek

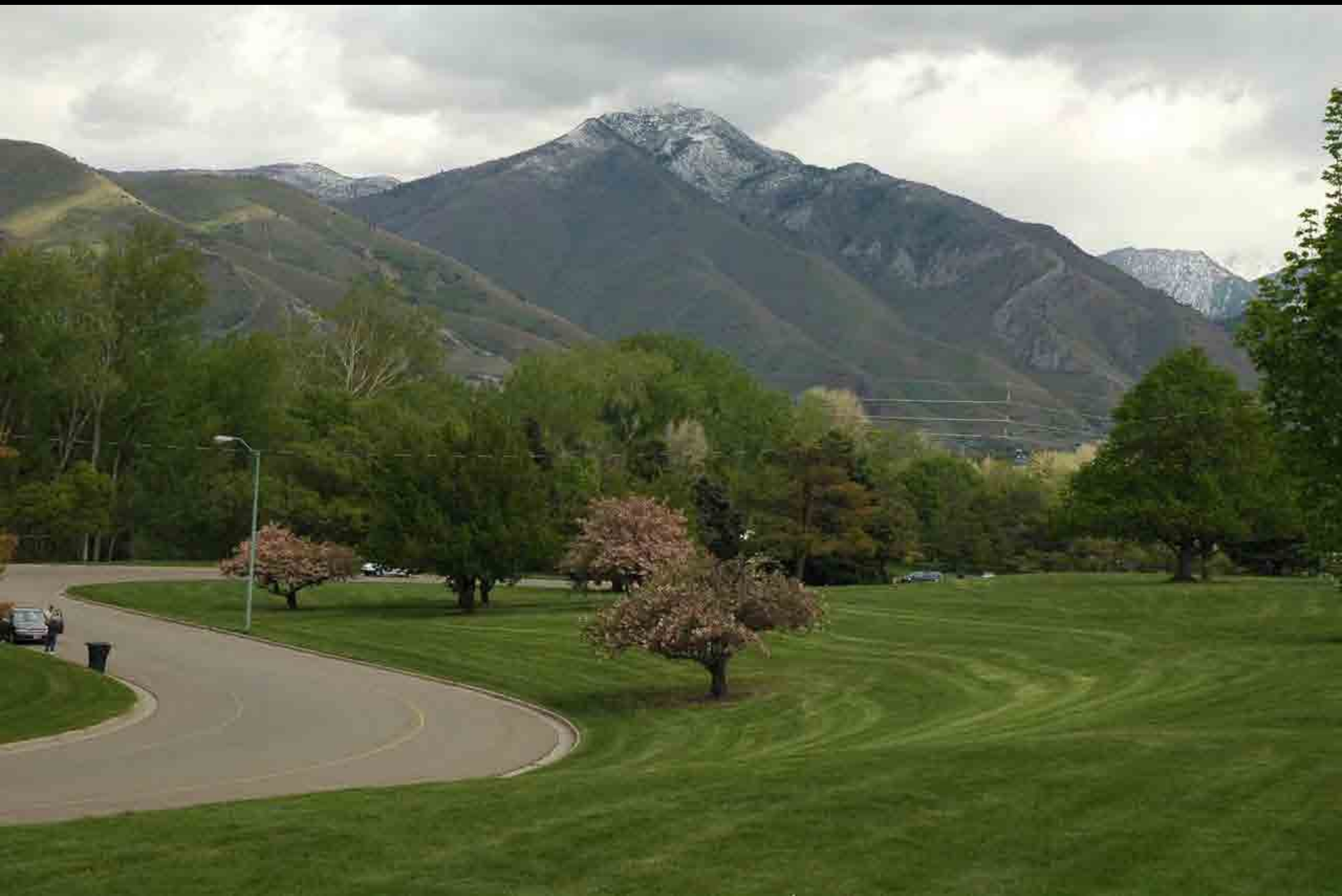
© Patricia Johnson '03

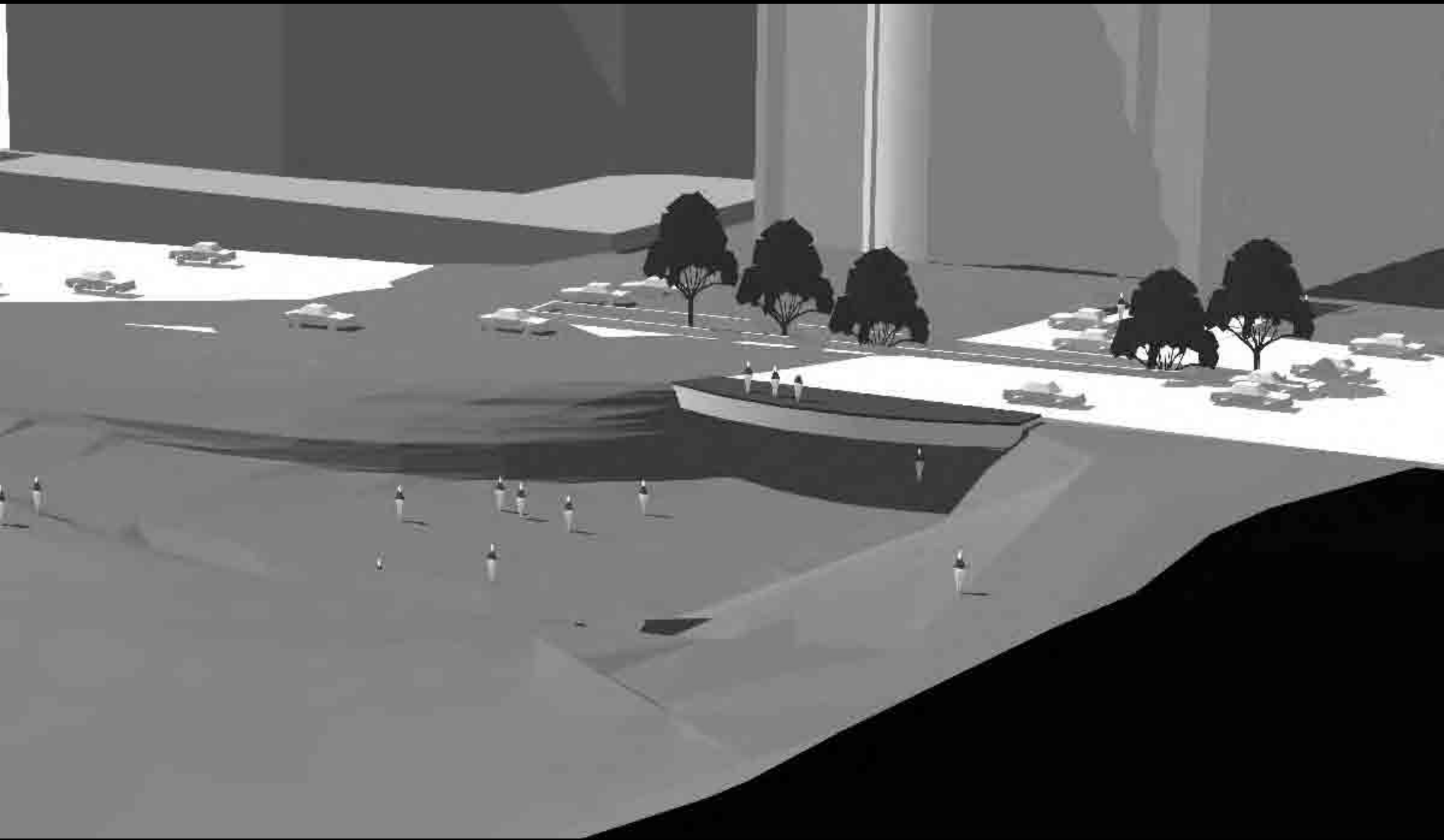


Salt Lake City Zoning Map





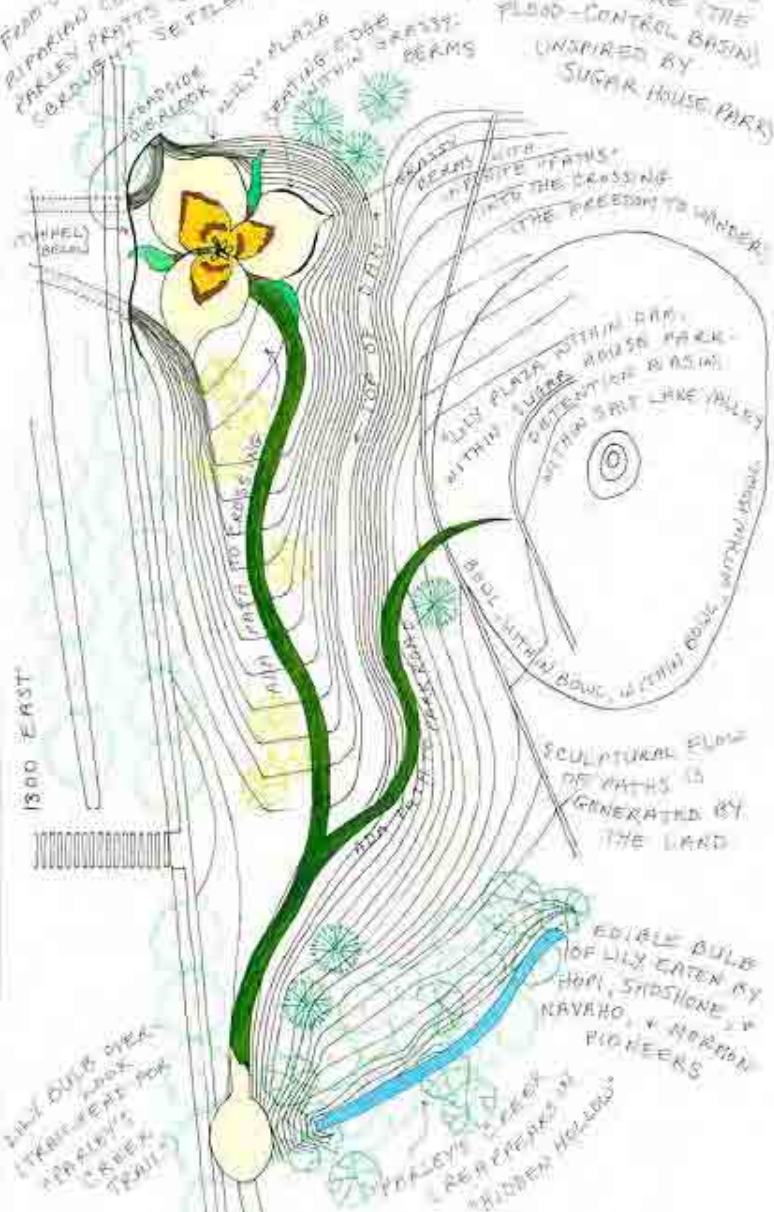




SEGO Lily (CALOCHORTUS NUTTALLII)

FROM OVERLOOK SAN TRACE
ALPINE CORRIDOR UP TO MOUNTAINS
PARKLEY PRATT'S "GOLDEN PASS ROAD" (1850)
"BRONZED" SETTLERS DOWN PARKLEY'S CANYON TO SUGAR HOUSE

THE ELEGANT SIMPLICITY + BEAUTY
OF TOPOGRAPHICAL LANDFORMS
+ INFRASTRUCTURE (THE
FLOOD-CONTROL BASIN)
INSPIRED BY
SUGAR HOUSE PARK



1300 EAST

LILY BULB OVER
STAIRS FOR
HORNED
PIONEERS
TRAIL

GRASSY
CORRIDOR
LILY PLAZA
SEATING EDGE
WITHIN
BEAMS

GRASSY
BEAMS
INSIDE
THE CROSSING
THE FREEDOM TO WANDER

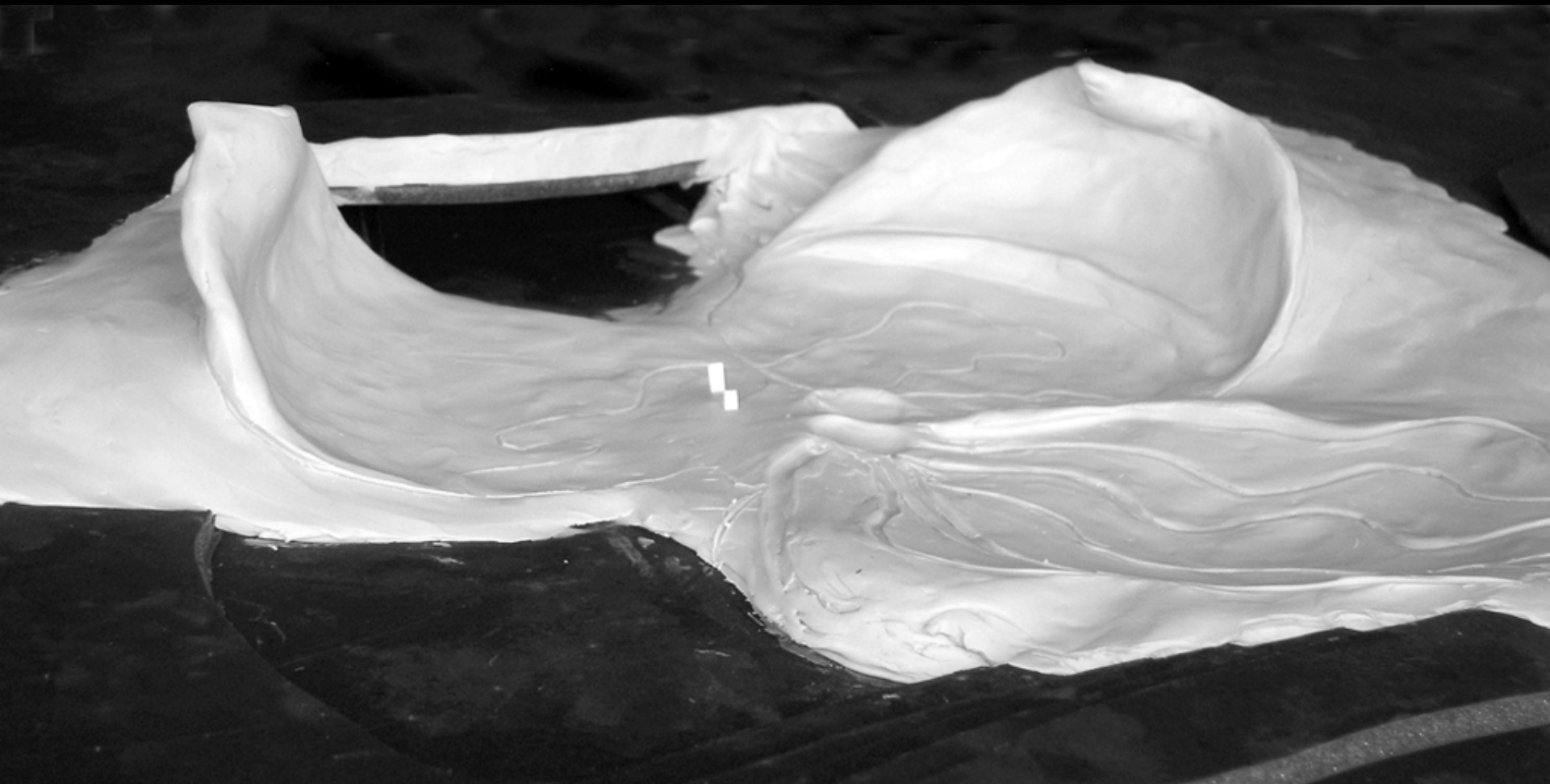
LILY PLAZA WITHIN PARK
WITHIN FLOOD CONTROL BASIN
WATER WHEEL WITHIN BASIN
WATER WHEEL WITHIN BASIN

SCULPTURAL FLOW
OF PATHS IS
GENERATED BY
THE LAND

EDIBLE BULB
OF LILY EATEN BY
ANA, SHOSHONE, &
NAVAHO, + HORNED
PIONEERS

PARKLEY'S
REPTILES IN
HIDDEN HOLLOW





SUGAR HOUSE PARK

SUGARHOUSE PARK

SEE NOTE 1

SEE NOTE 2

SEE NOTE 3

TOP OF DAM

SEE NOTE 2

SEE NOTE 2

SEE NOTE 1

APPROX. BASE OF SLOPE FIELD VERIFY SEE NOTE 5

SEE NOTE 4

SEE NOTE 1

SLOPE DIRECTION

FLOW DIRECTION

PARLEY'S CREEK

APPROX. BASE OF SLOPE FIELD VERIFY SEE NOTE 4

SEE NOTE 4

SEE NOTE 1

SEE NOTE 1

1300 EAST NORTHBOUND

TUNNEL

SEE NOTE 5

PLAN VIEW 1300 EAST

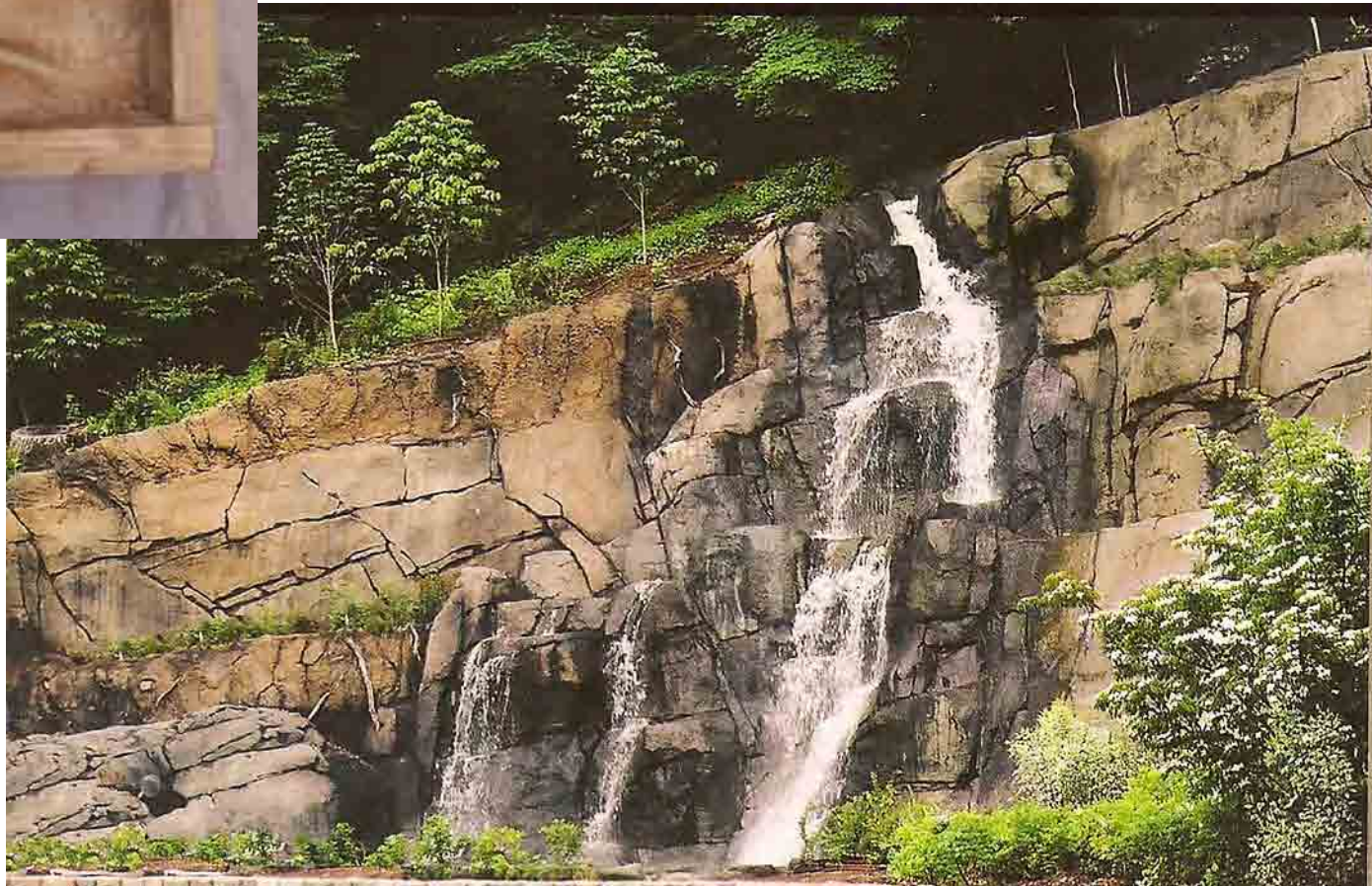
Handwritten notes in red ink, including "1300" and "Sugar House Park".



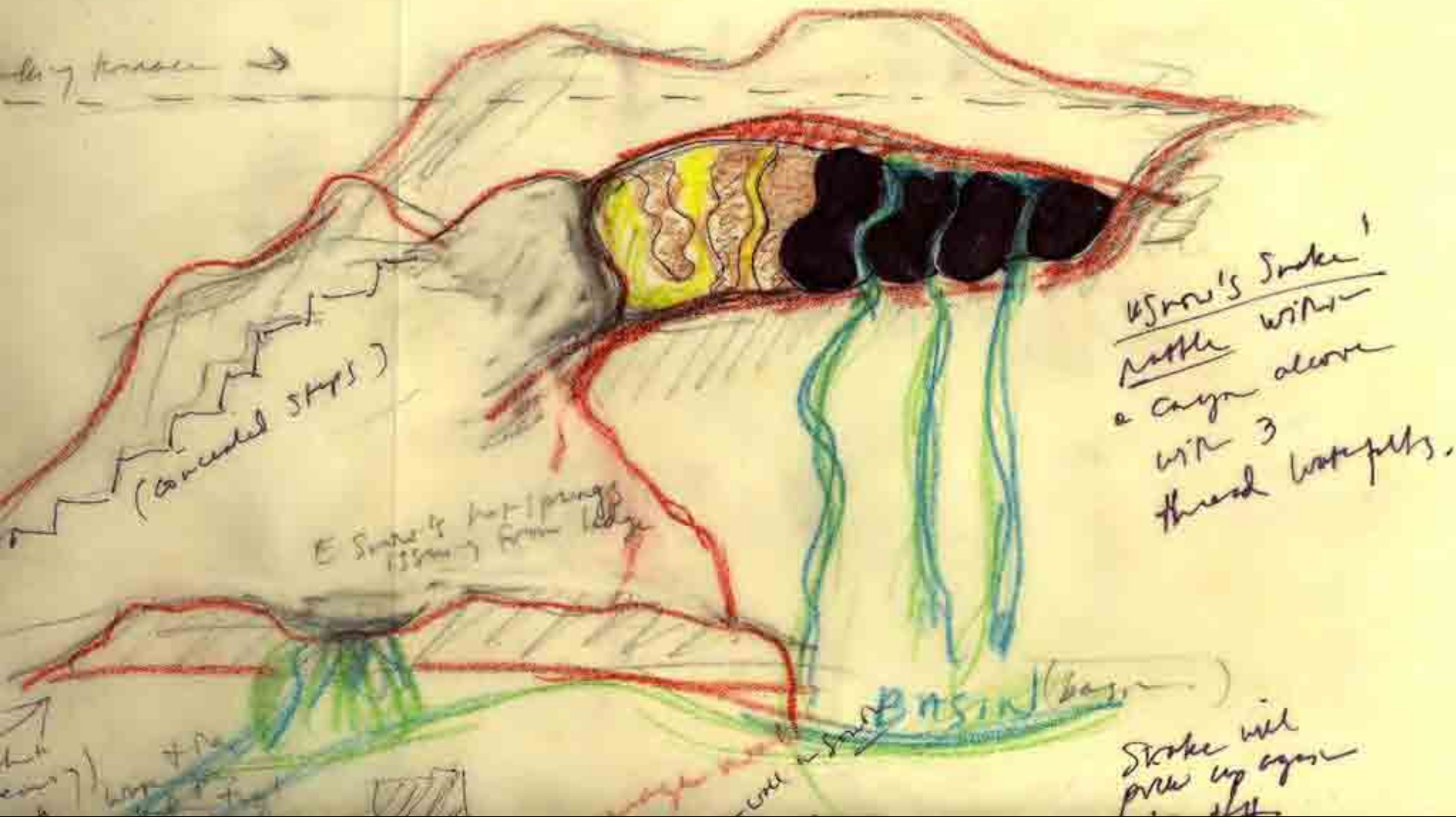
Boulderscape

San Clemente, CA

Photo of a cascading water feature,
built atop a 45' high soil nail wall.

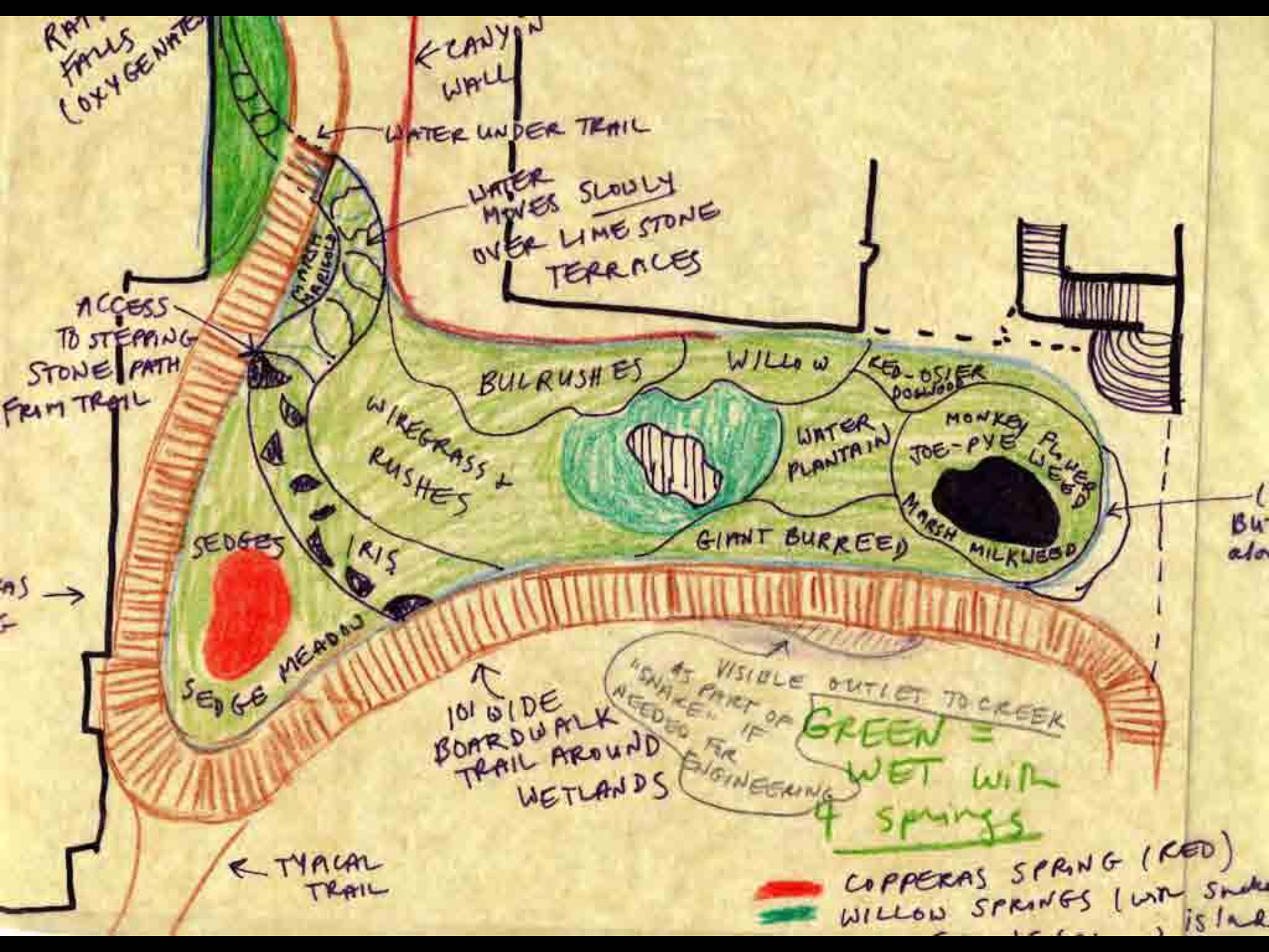


William Clayton ^{walks above No 31 to complete L}



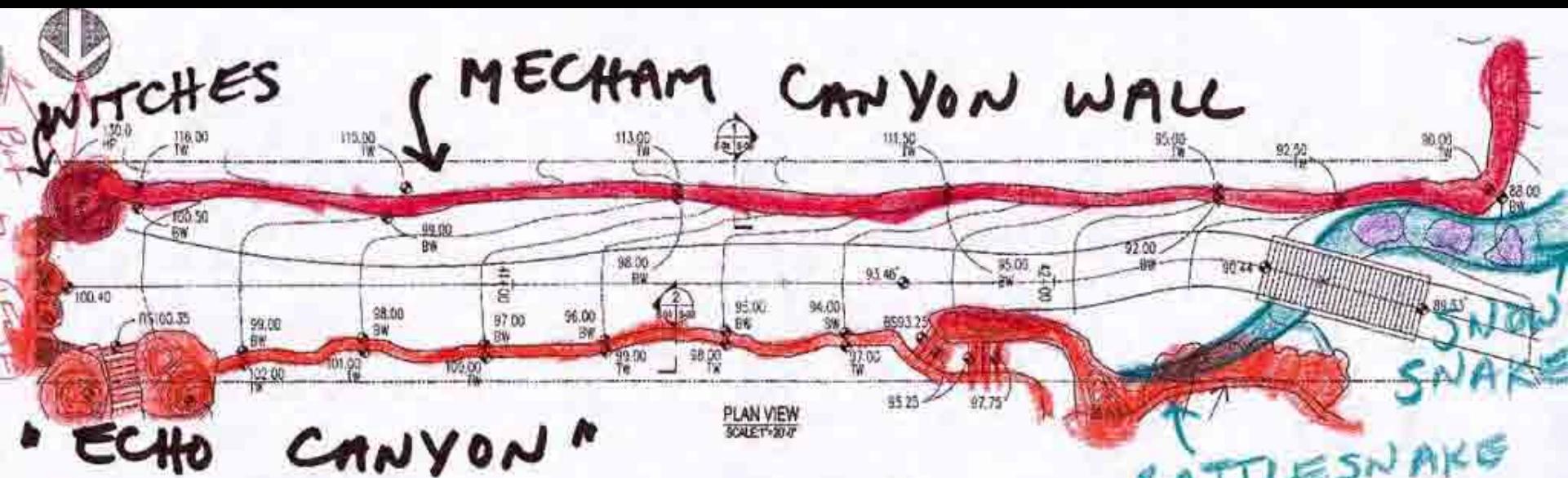
W. Snow's Snake
Nettle with
a canyon above
with 3
thread waterfalls.

Stake will
pick up again



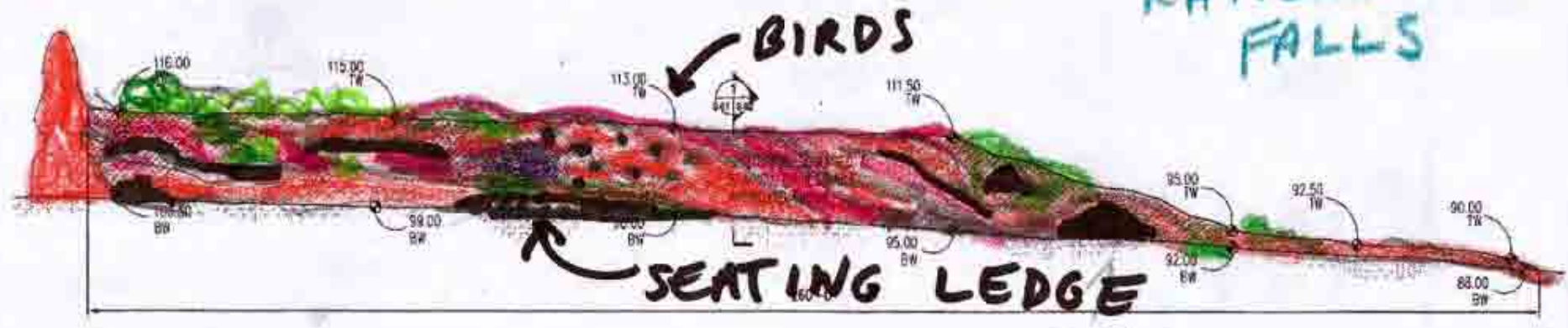


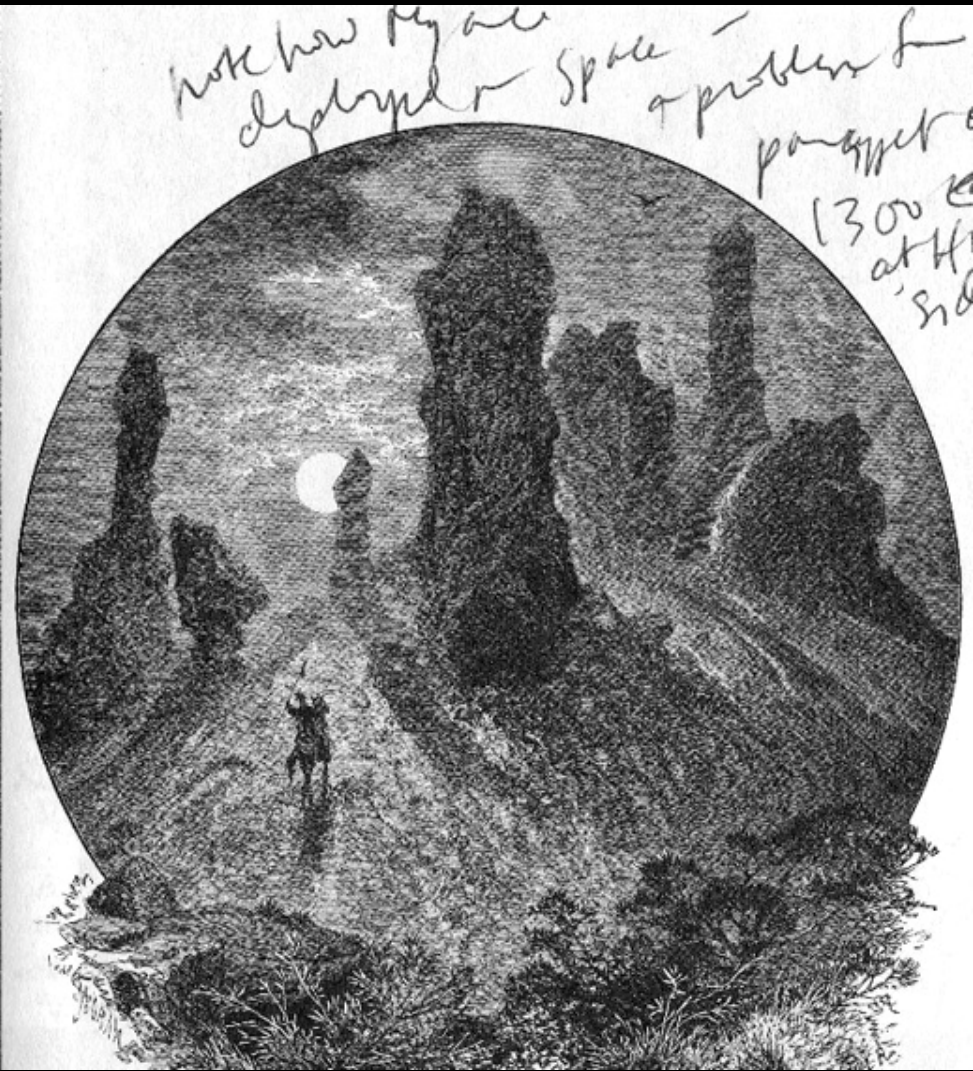
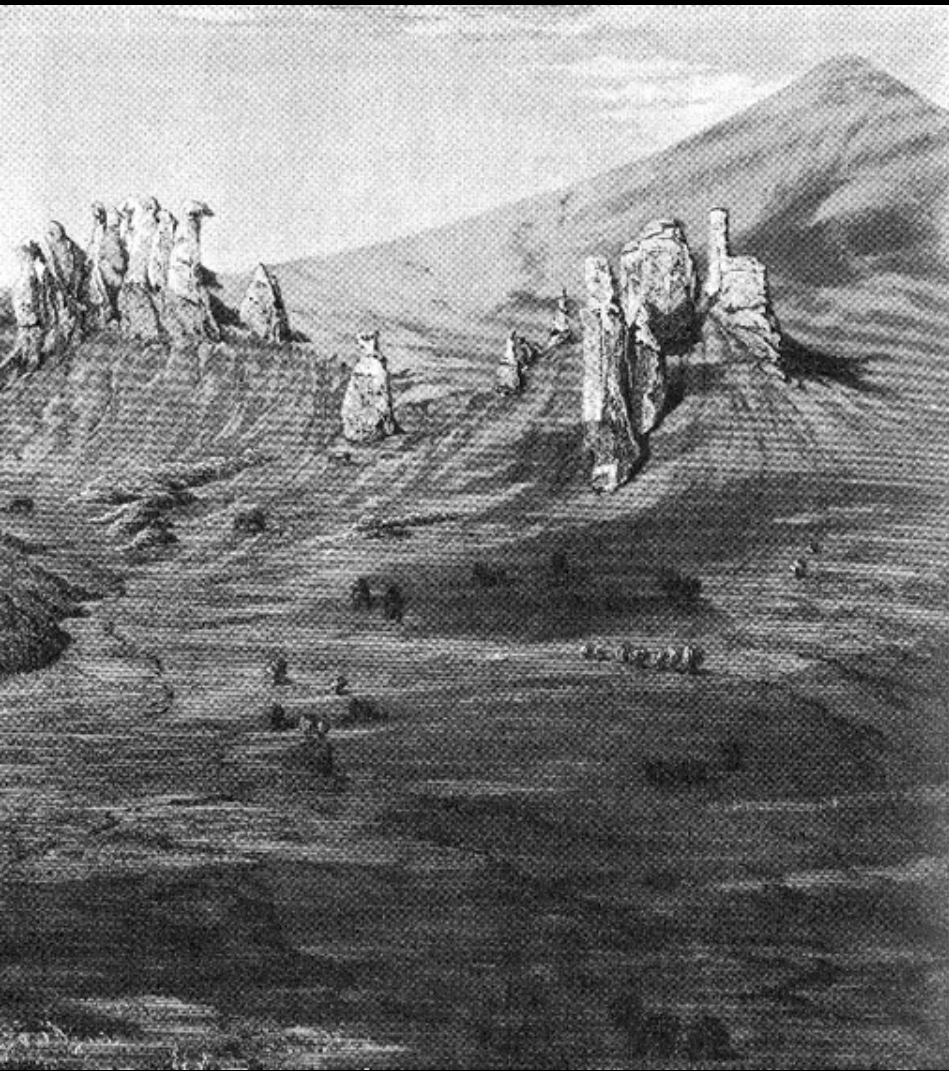




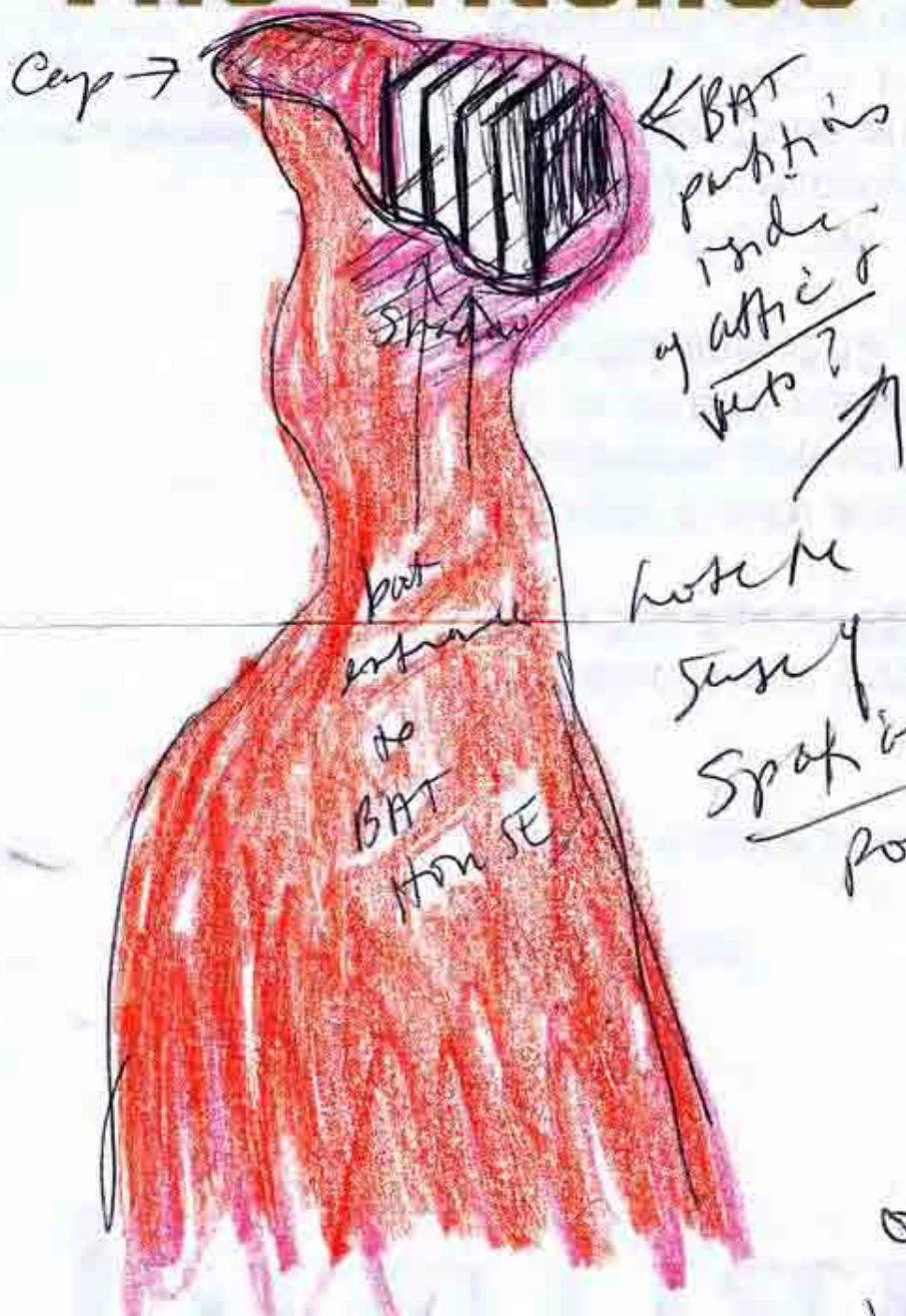
RATTLESNAKE FALLS

SNOW SNAKE





The Witches



(maybe play on
colors of center of
sepalily)

(in background)
frees
Chopy



plants
put big down
no tunnel.

frees
Snake median
left side
with some plants

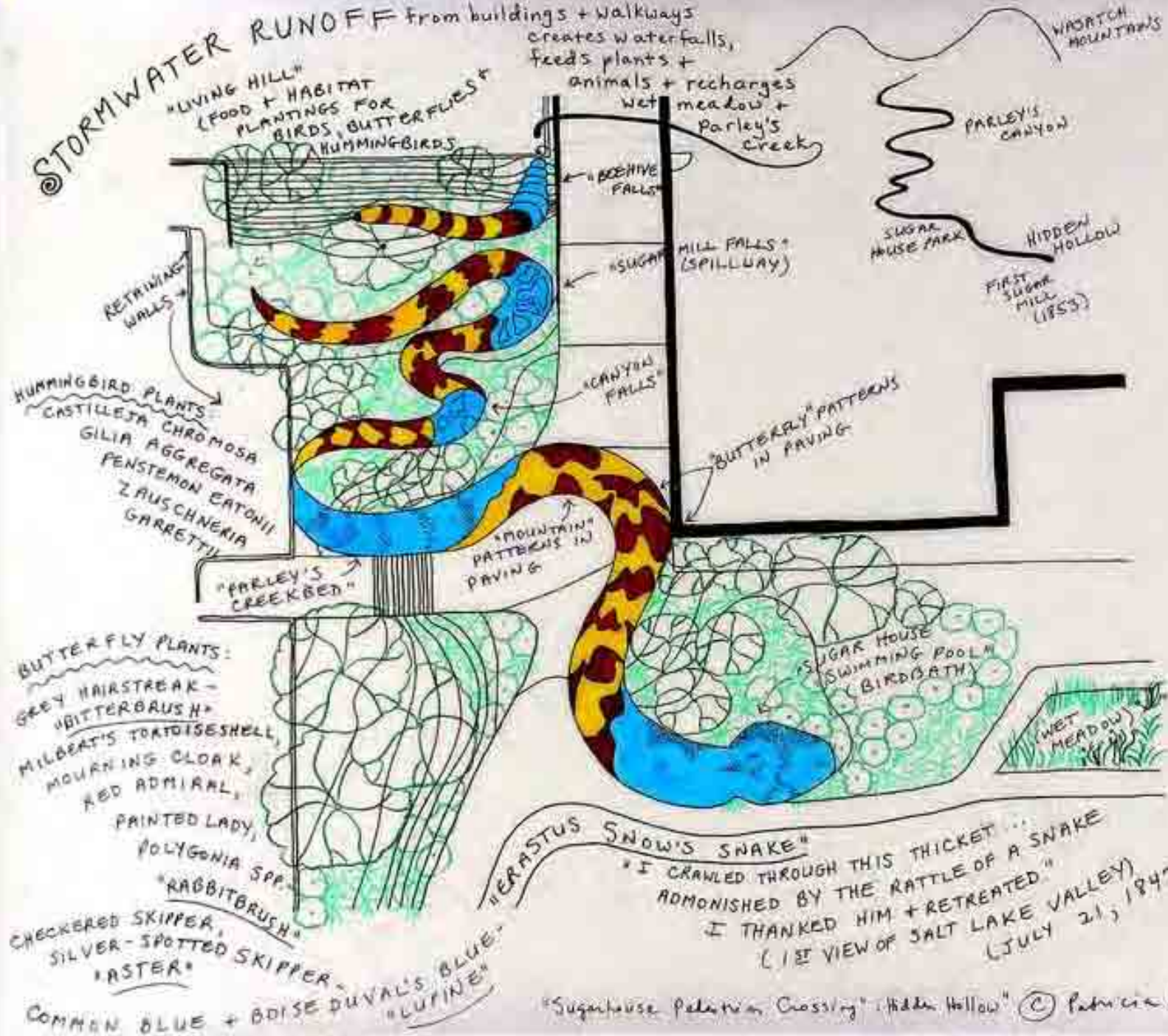
(on both sides)



Problem
key difference
of the thing
both ways
Could be
a feature, to
draw the
vegetation



STORMWATER RUNOFF from buildings + walkways creates waterfalls, feeds plants + animals + recharges wet meadow + Parley's Creek



Salt Lake City Zoning Map





