

# MARC BRANDT PARK INFILTRATION BASINS

**Public Meeting**  
**May 9, 2026**

# Agenda

1. Project Team
2. Introduction
3. Existing Conditions
4. Alternatives Analysis
5. Proposed Improvements
6. Green Stormwater Infrastructure (GSI)
7. Planting Style
8. Conceptual Place Making
9. Next Steps

# Project Team



CITY OF SANTA FE  
PARKS & OPEN SPACE



**Dekker**  
Architecture in Progress

# Introduction

## » Project Overview

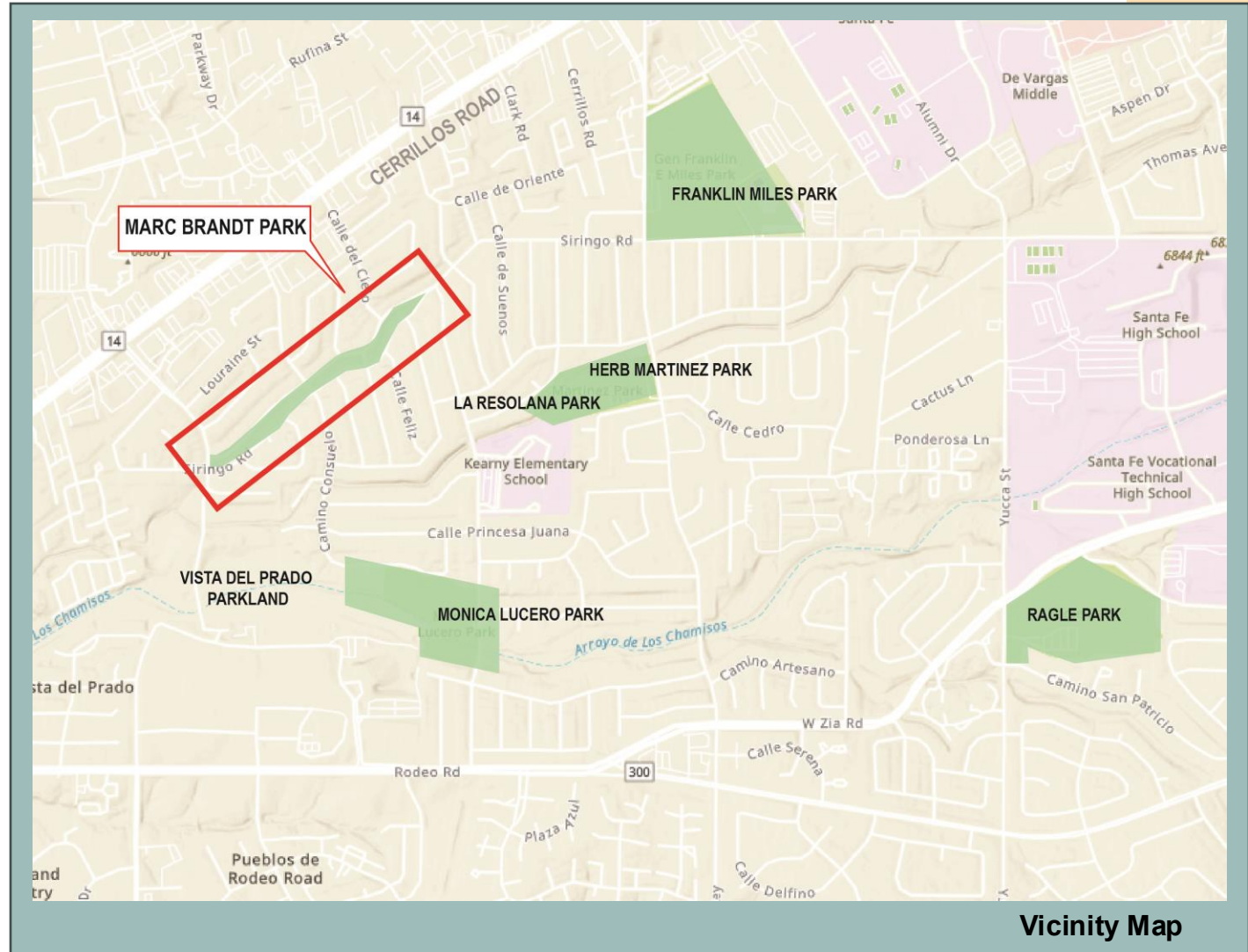
## » Proposed Improvements

### Park Features

- » Improved landscaping using native and drought-tolerant plantings
- » Enhanced accessibility and pedestrian connections
- » A design that maintains the park as a functional, usable community space

### Stormwater Improvements

- » New multi-use infiltration areas to manage stormwater during rain events
- » Improved drainage patterns to safely capture and convey water



# Existing Conditions

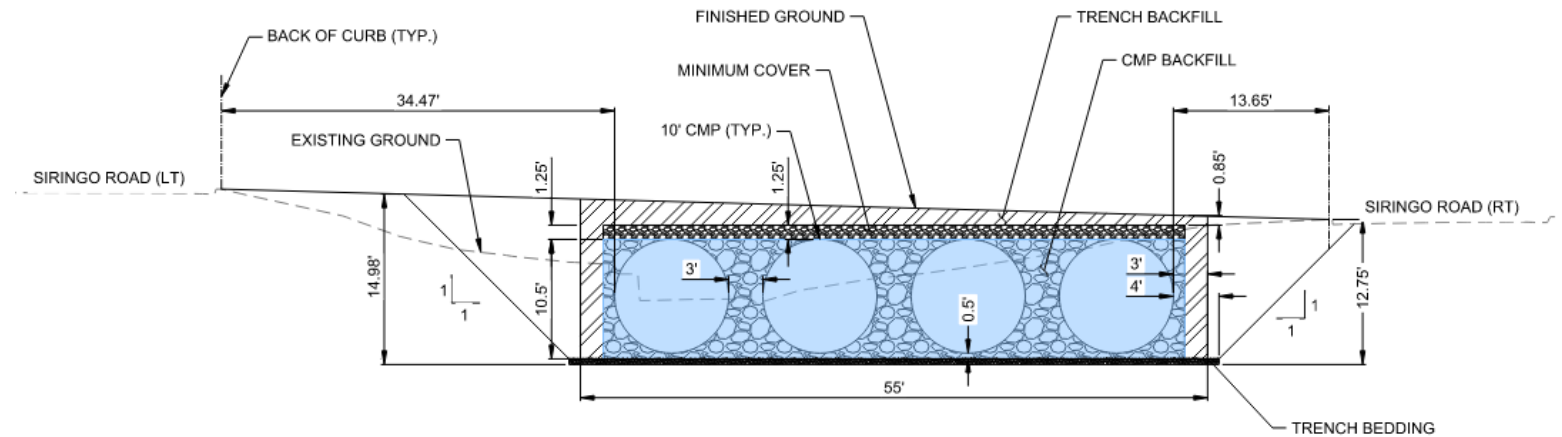


Avenida De Las Campanas



# Alternatives Analysis

- » **Underground Storage**
  - » Concrete Tanks
  - » Corrugated Metal Pipe
- » **Constructability**
- » **Cost**
- » **Maintenance**
- » **Hydraulic Performance**

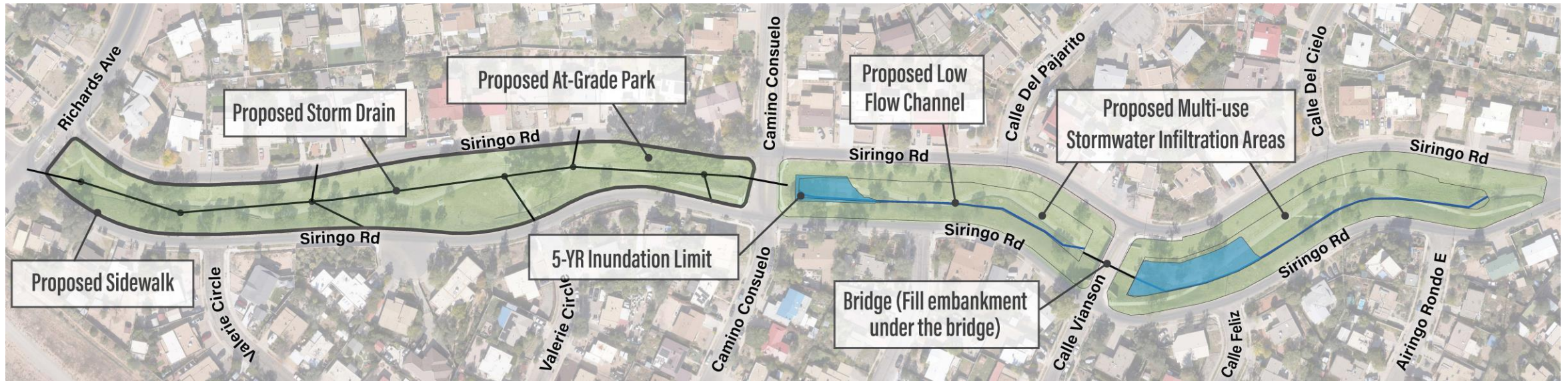


# Proposed Improvements

## » Site Map

- » 2.2 acres of at-grade park
- » 2.6 acres of multi-use stormwater infiltration areas

## 5 Year Inundation



# Proposed Improvements

» Incorporate GSI Elements and Locally Adapted Plants



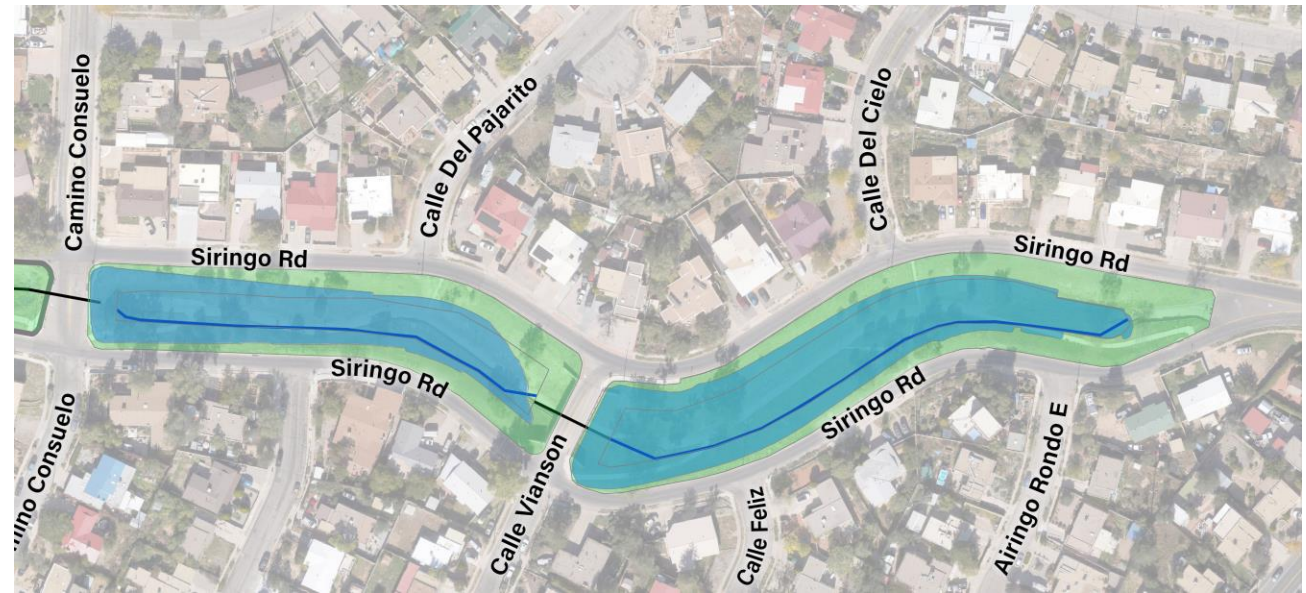
# Proposed Improvements

## » 100-Year Storm Hydraulic Performance

- » Inflow: 514 cfs
- » Outflow: 200 cfs
- » Total Storage Volume: 9.1 ac-ft

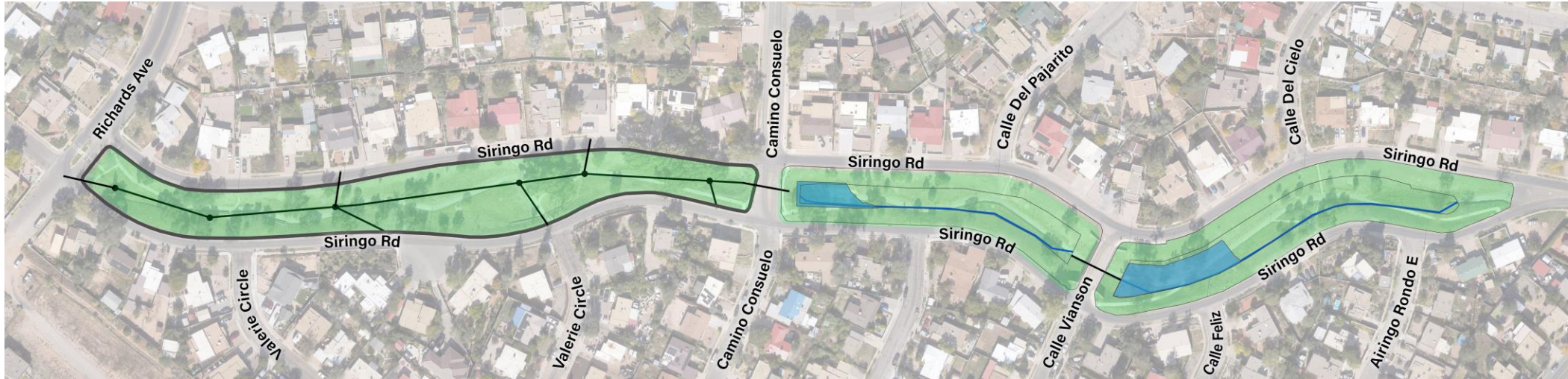
## » Downstream Impacts

## 100 Year Inundation



# Proposed Improvements

**5 Year Inundation**



**25 Year Inundation**



**50 Year Inundation**



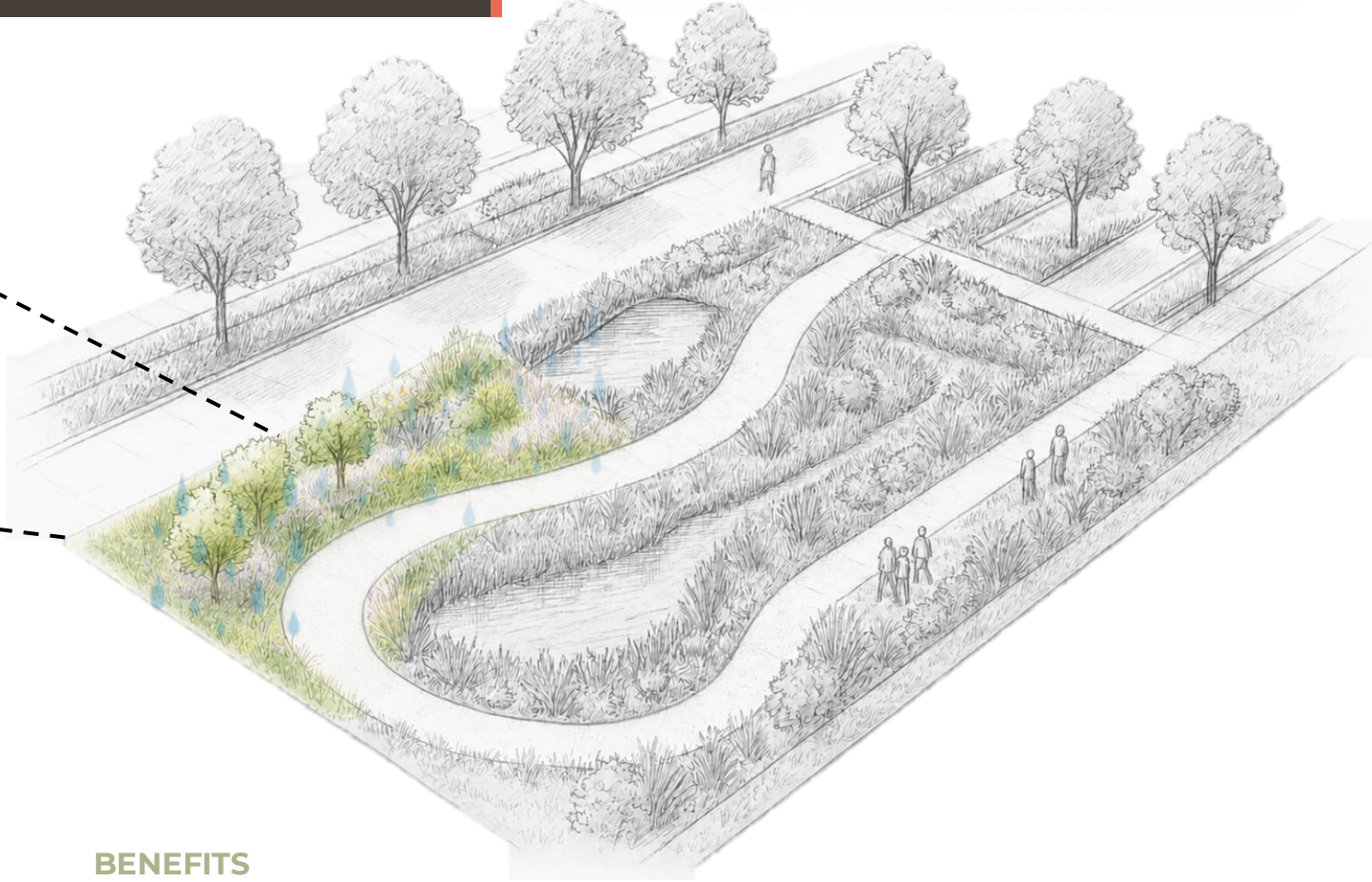
# Questions?

# Green Stormwater Infrastructure (GSI) & Conceptual Place Making



# Green Stormwater Infrastructure (GSI)

## RAIN GARDEN SYSTEM



### WHAT IS A RAIN GARDEN?

Rain gardens are shallow, vegetated systems designed to capture and infiltrate stormwater runoff from adjacent surfaces such as streets, sidewalks, and rooftops.

By slowing down water flow, filtering pollutants, and allowing infiltration into the soil, rain gardens reduce flooding, improve water quality, and recharge groundwater.

Integrated with native plantings and pedestrian spaces, they provide both ecological function and aesthetic value within urban environments.



### BENEFITS

**WATER QUALITY**  
Filters pollutants and sediments, improving downstream water quality



**FLOOD MITIGATION**  
Reduces runoff volume and peak flows, helping prevent flooding



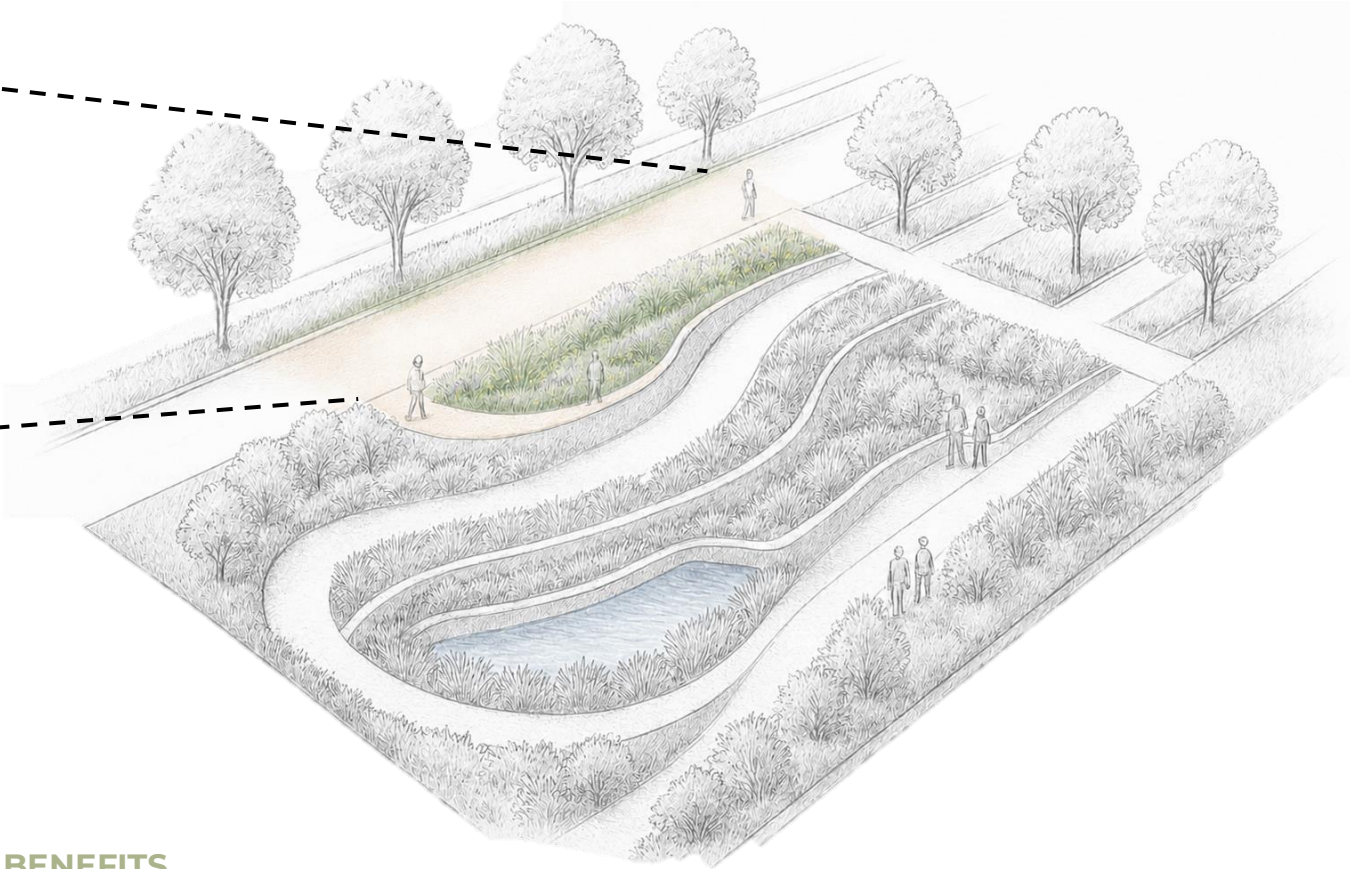
**HABITAT CREATION**  
Supports native plants, pollinators, and urban biodiversity



**URBAN COOLING**  
Adds greenery that reduces heat island effect and improves human comfort

# Green Stormwater Infrastructure (GSI)

## PERMEABLE CONCRETE



### WHAT IS PERMEABLE CONCRETE?

Permeable concrete allows rainwater to pass through its porous surface, reducing runoff, replenishing groundwater and improving water quality- while providing durable, low maintenance surfaces for our streets and public spaces.



### BENEFITS

**WATER QUALITY**  
Filters pollutants and sediments, improving downstream water quality



**FLOOD MITIGATION**  
Reduces runoff volume and peak flows, helping prevent flooding



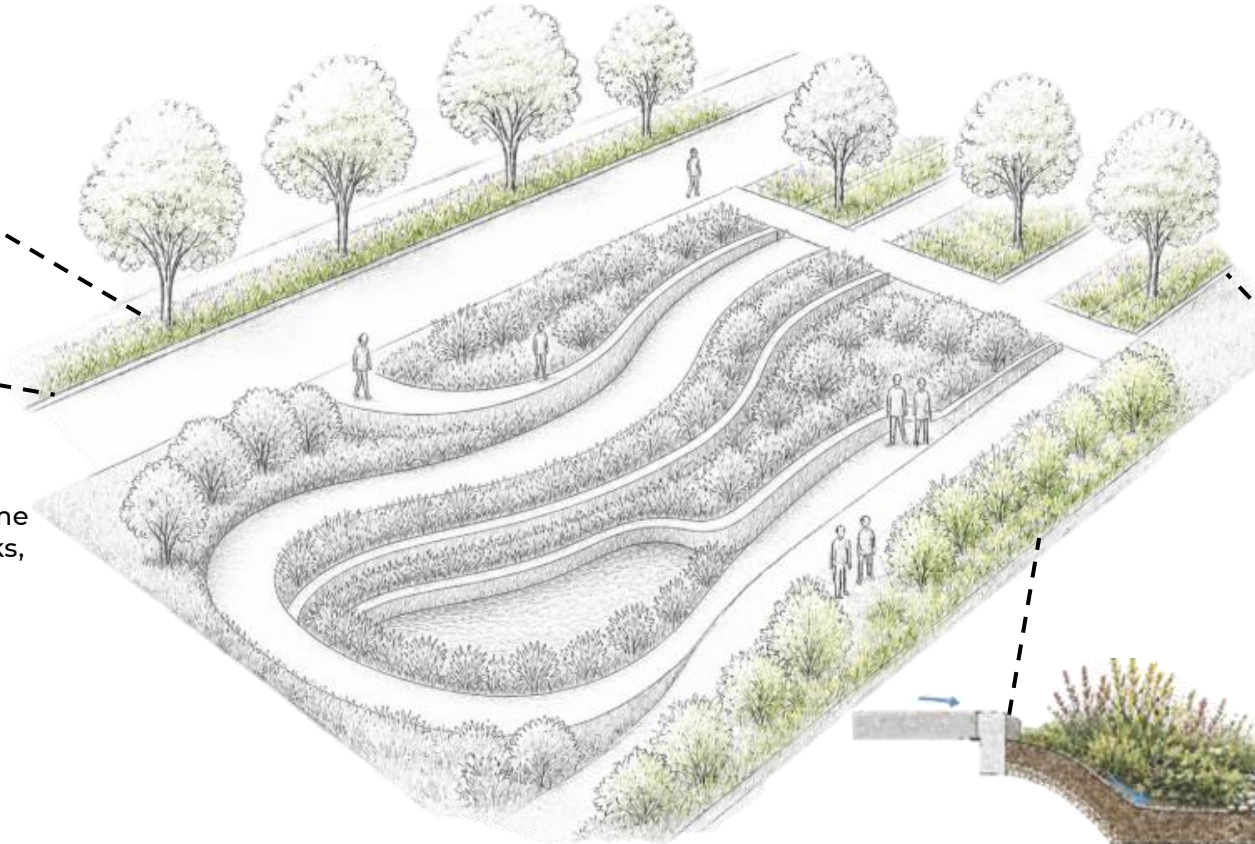
**HABITAT CREATION**  
Supports native plants, pollinators, and urban biodiversity



**URBAN COOLING**  
Adds greenery that reduces heat island effect and improves human comfort

# Green Stormwater Infrastructure (GSI)

## BIO SWALES AND BIO INFILTRATION



### WHAT ARE BIO SWALES?

Bio swales are shallow, vegetated channels designed to capture, slow, and clean stormwater runoff. They use engineered soil and native plants to filter pollutants, promote infiltration, and reduce the volume and speed of stormwater that flows into drains, creeks, and rivers.

### How They Work –

- Capture
- Filter
- Infiltrate
- Slow Release



### BENEFITS

**WATER QUALITY**  
Filters pollutants and sediments, improving downstream water quality



**FLOOD MITIGATION**  
Reduces runoff volume and peak flows, helping prevent flooding



**HABITAT CREATION**  
Supports native plants, pollinators, and urban biodiversity



**URBAN COOLING**  
Adds greenery that reduces heat island effect and improves human comfort

# Planting Style

## Native Meadow Planting



- » Complimentary Plantings
- » Natural Plant Habits
- » Free Form Plant Clustering



## High Desert Xeric Planting



- » Water Conservation
- » Adaptive Plants
- » Seasonal Interest

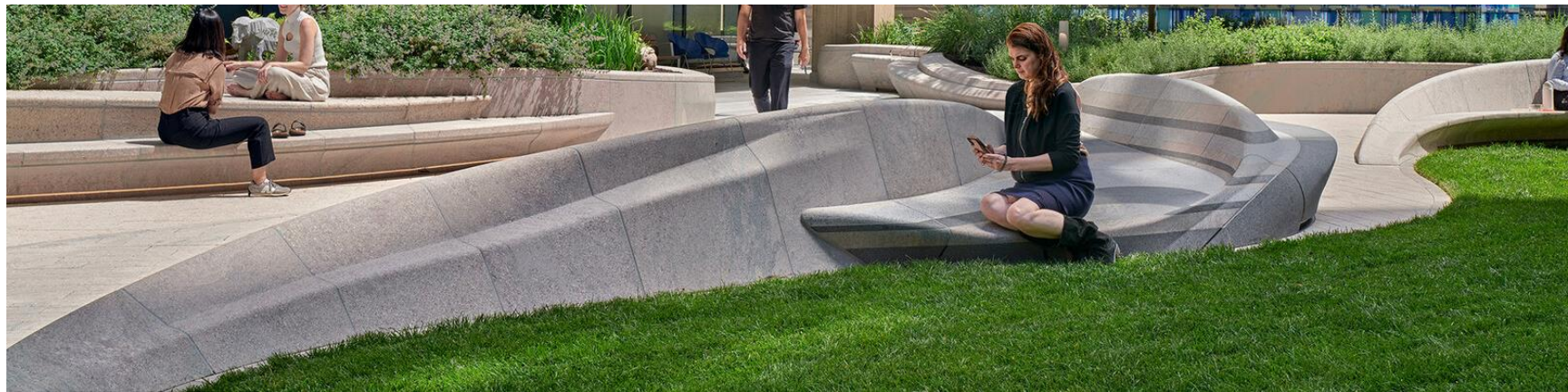
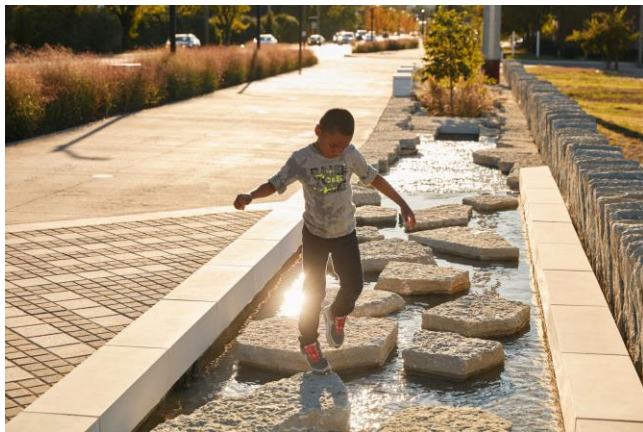
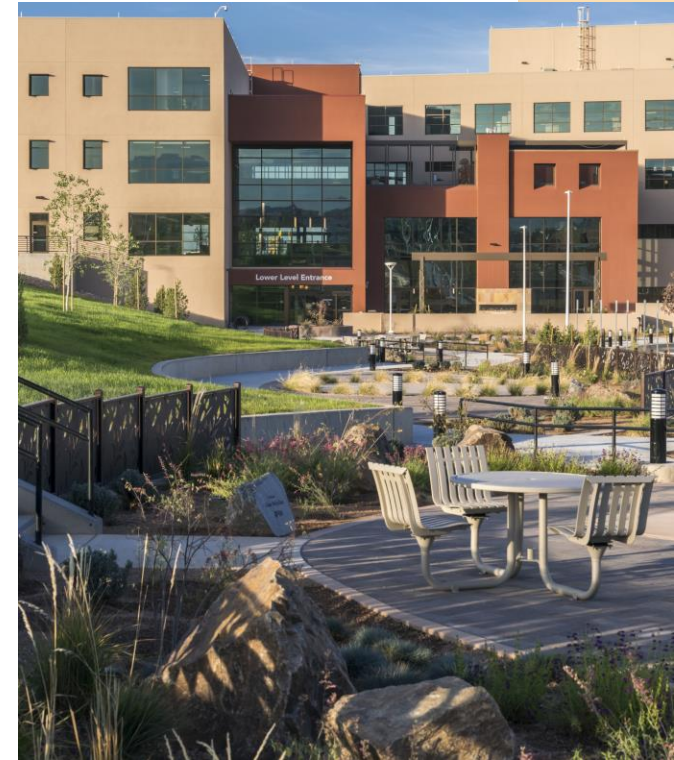
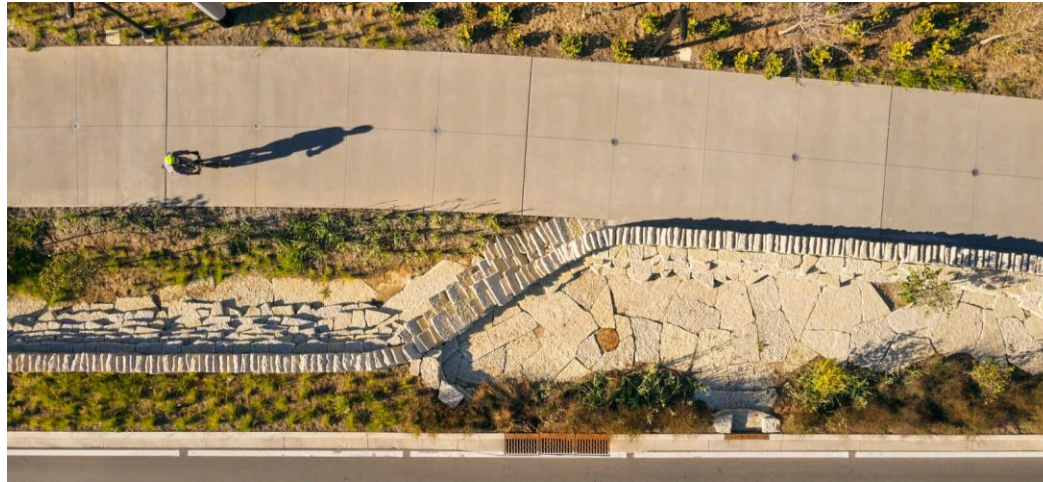
# Conceptual Place Making

- » Baffles and Water Collection
- » Gathering Space
- » Form
- » Function
- » Reimagination of Space



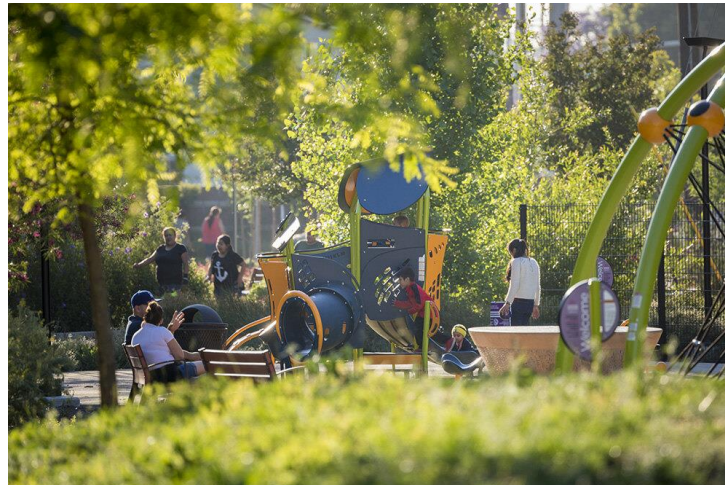
# Conceptual Place Making

- » Celebration of Water
- » Circulation
- » Material Usage
- » Feel of The Space
- » Breaking up Sight Lines



# Conceptual Place Making

- » Gathering Spaces
- » Trails
- » Playgrounds
- » Open Space
- » Entertainment
- » Crime Prevention Through Environmental Design (CPTED)



# Next Steps



# Thank You!

*For any questions or comments, please contact:*

[Emily.Engelbart@wsp.com](mailto:Emily.Engelbart@wsp.com)

*Comment period closes on Sunday, June 7.*

