

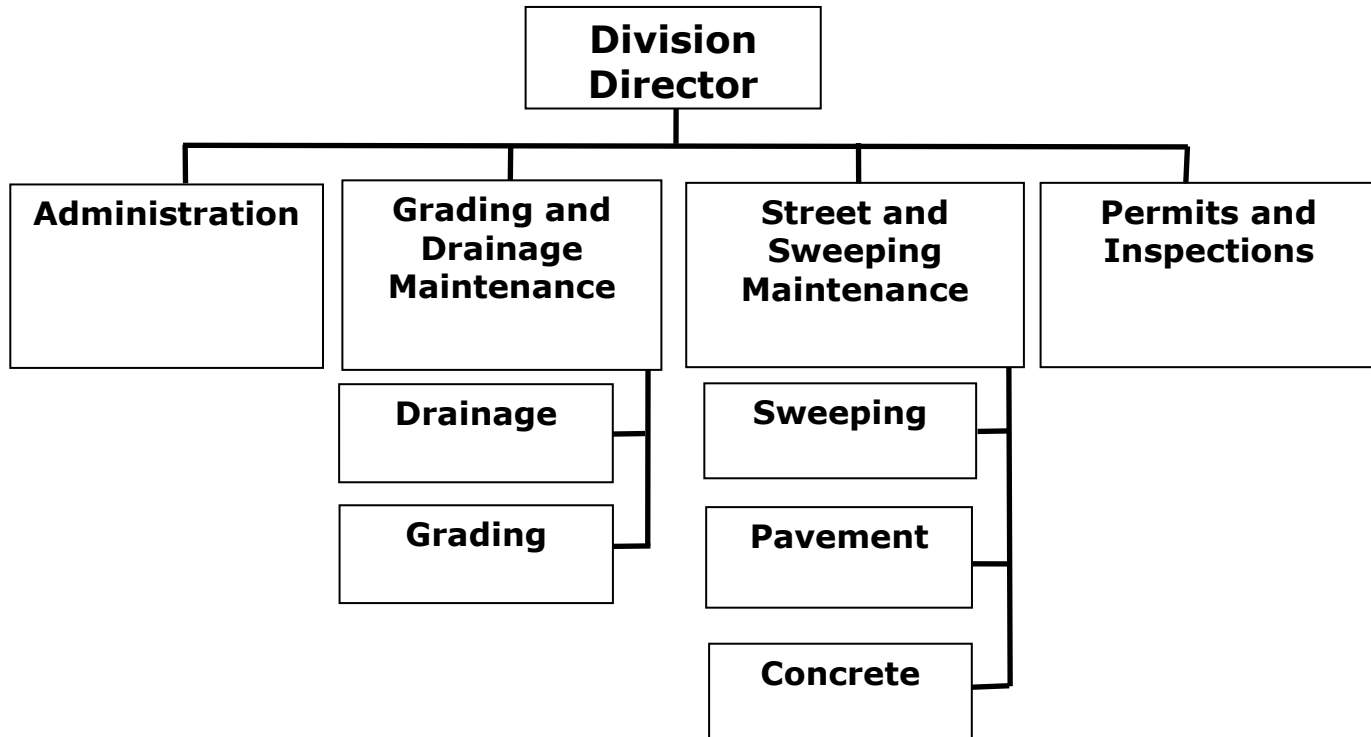
# **Streets & Drainage Maintenance Division**



---

**David R. Catanach PE,  
Division Director  
1142 Siler Road  
Santa Fe, NM 87505**

# *Operations and Maintenance/Blue Collar Group*



# Overview



---

- **Number of city streets (+/-) = 1100**
- **Area of city streets (+/-) = 755 lane miles**
- **Unpaved roadways (+/-) = 41 miles**
- **Storm drain inlets (+/-) = 2200**
- **Culverts/structures = too many to count**
- **Major arroyos (+/-) = 10**
- **Arroyo tributaries = too many to count**
- **Street cut permits (+/-) = 850 per year**
- **Salt/cinders (+/-) = 2500 cubic yards per year**
- **Sweeper waste (+/-) = 4000 tons per year**
- **Logged complaints (+/-) = 3000 per year**
- **Off-hour on-calls = too many to count**

# Permits, Project Management / Inspection

- **Streets Cut Permits and Inspections**
- **Projects - Paved Street Maintenance**
- **Projects - Unpaved Roads Maintenance**
- **Projects Arroyo /Watershed Maintenance Storm Water Management Inspections and Enforcement**
- **Sidewalk Inspections and Enforcement**
- **Snow removal**



# Streets and Sweeping Maintenance

- Pavement Maintenance
- Sweeping Maintenance
- Concrete Construction
- Snow Removal



# Grading and Drainage Maintenance

- Grading Maintenance
- Drainage Maintenance
- Snow Removal





# NMDOT Maintained Streets

---

- **Cerrillos Rd** - St Francis Dr. to City Limits (West End)
- **St. Michael's Dr.** - Cerrillos Rd to Old Pecos Trail
- **St. Francis Dr.** - I 25 to US 285
- **Paseo De Peralta** - St Francis Dr to Bishops Lodge
- **Old Pecos Trail** - St. Michaels Dr to Rodeo Rd
- **Hyde Park Rd** - Bishops Lodge to City Limits
- **Bishops Lodge (Washington Ave)** – Paseo De Peralta to Hyde Park Rd
- **Hyde Park Rd** – Entire Length
- **North Guadalupe** - Paseo De Peralta to US 285



# NMDOT Road Exchange Agreement

---

## NMDOT

- General Street Maintenance
- Snow Removal

## City of Santa Fe

- Oversight of Utility Cuts within the Right-Of-Way
- Street Sweeping
- Median Maintenance
- Traffic Lights
- Traffic Striping





## CIP/GO Bonds – Duration to Fall 2014

---

- Arroyo/Watershed Maintenance.
- Base Course / Drainage for Unpaved Roadways.
- Repave and Preservation Maintenance for Paved Streets.



# Snow Removal

---

Snow is removed based upon priority

- Priority 1 streets: Main arterials provide access for police, fire, buses and other emergency vehicles;
- Priority 2 streets: Consist of commercial routes;
- Priority 3 streets: Include some residential streets.
- A map of the city's priority streets is available on the City of Santa Fe web site: [www.santafenm.gov](http://www.santafenm.gov).



# Storm Water Management

---

- Public Education on Storm Water Impacts
- Specialized Training for Business & Industry
- Inspections & Enforcement
- 24 hour Illegal Dumping Hotline, Web Information pages, Web Complaint form
- Brochures, Multi-Media, Event Staffing, No Dump Signage, Storm Drain Marker program, Door Hangers
- Ordinances, Mapping, Grant Applications, Utility Fee Funding, Issuance of NOV's (Notice of Violations)
- Vehicle Maintenance program, Routine Sweeping, on-going River Restoration projects



# Stand-By /On-Call/City Events

---

- Plaza events
- Homeless camps
- Downed trees
- Accidents
- Washout / Flooding situations
- Keys / cell phones in storm drains
- Etc.,



# Challenges

---

- Aged Equipment – law of diminishing returns
- Retirement of key employees
- Expanding responsibilities with smaller work forces
- Aged infrastructure