

1 PASSED, APPROVED, AND ADOPTED this 13th day of September, 2023.

2

3



4


ALAN M. WEBBER, MAYOR

5 ATTEST:

6

7

8



9 KRISTINE MIHELIC, CITY CLERK

10 APPROVED AS TO FORM:

11

12



[Erin McSherry \(Sep 18, 2023 17:59 MDT\)](#)

13 ERIN K. MCSHERRY, CITY ATTORNEY

14

15

16

17

18

19

20

21

22

23

24 *Bill No. 2023-21*

25 *Legislation/Land Use Legislation/Ordinances/2023-25 (O)/El Lucero Crossing Rezoning*

Attachment A

PUBLIC NOTICE

THIS SURVEY IS BASED ON THOSE RECORDED DOCUMENTS NOTED HEREON. CITY OF SANTA FE STAFF MUST APPROVE ALL DOCUMENTS SUBMITTED WITH AN APPLICATION FOR A BUILDING PERMIT AND MAY REQUIRE SUBMITTAL OF ADDITIONAL DOCUMENTATION TO PROVE LEGAL LOT OF RECORD.

4448480
1190410

EASEMENT DATA

CURVE	ARC RADIUS	CHORD	LENGTH	DELTA
C1	7631	8813	9700.937E	88.27
C2	3773	1324	379.98257E	3.259

LINE	LENGTH	BEARING
L1	10.72	N 89°12'35" E
L2	10.77	S 89°12'35" E
L3	93.93	S 55°05'23"E

NORTH



SCALE 1"=100'

SURVEYORS CERTIFICATE

I HEREBY CERTIFY THAT THIS PLAT AND THE NOTES HEREON ARE AN ACCURATE DELINEATION OF A FIELD SURVEY COMPLETED BY ME OR UNDER MY DIRECTION ON FEB. 23RD, 2007, AND IN BELIEF, AND MEET THE STANDARDS FOR PROFESSIONAL LAND SURVEYORS PRACTICING IN NEW MEXICO.

RICHARD A. CHATROOP N.M.P.L.S. #11011

AMENDED CERTIFICATE

I HEREBY CERTIFY THAT THIS PLAT AND THE NOTES HEREON ARE AN ACCURATE DELINEATION OF A FIELD SURVEY COMPLETED BY ME OR UNDER MY DIRECTION ON FEB. 23RD, 2007, AND IN BELIEF, AND MEET THE STANDARDS FOR PROFESSIONAL LAND SURVEYORS PRACTICING IN NEW MEXICO.

RICHARD A. CHATROOP N.M.P.L.S. #11011

PLAT REFERENCES

THE FOLLOWING PLATS WERE USED IN THE DETERMINATION OF LOT LINES AND RIGHT-OF-WAYS AND ARE RECORDED DOCUMENTS FOR THIS PLAT:

- "TOWNSHIP 7 NORTH, RANGE 8 EAST OF THE NEW MEXICO PRINCIPAL MERIDIAN" FILED IN PLAT BOOK 37, CLERK, SANTA FE COUNTY, NEW MEXICO, BY BRIAN K. WICKLANDER, N.M.P.S. #1197, AND OFFICE OF THE COUNTY CLERK, SANTA FE COUNTY, NEW MEXICO.
- "TOWNSHIP 7 NORTH, RANGE 8 EAST OF THE NEW MEXICO PRINCIPAL MERIDIAN" FILED IN PLAT BOOK 37, CLERK, SANTA FE COUNTY, NEW MEXICO, BY BRIAN K. WICKLANDER, N.M.P.S. #1197, AND OFFICE OF THE COUNTY CLERK, SANTA FE COUNTY, NEW MEXICO.
- "TOWNSHIP 7 NORTH, RANGE 8 EAST OF THE NEW MEXICO PRINCIPAL MERIDIAN" FILED IN PLAT BOOK 37, CLERK, SANTA FE COUNTY, NEW MEXICO, BY BRIAN K. WICKLANDER, N.M.P.S. #1197, AND OFFICE OF THE COUNTY CLERK, SANTA FE COUNTY, NEW MEXICO.
- "NEW MEXICO STATE HIGHWAY DEPARTMENT RIGHT OF WAY MAP NEW MEXICO PROJECT NO. 151-489(2005)-5897A, FILED MAP DATE APRIL 15, 1994, NOT RECORDED.

LEGEND AND NOTES

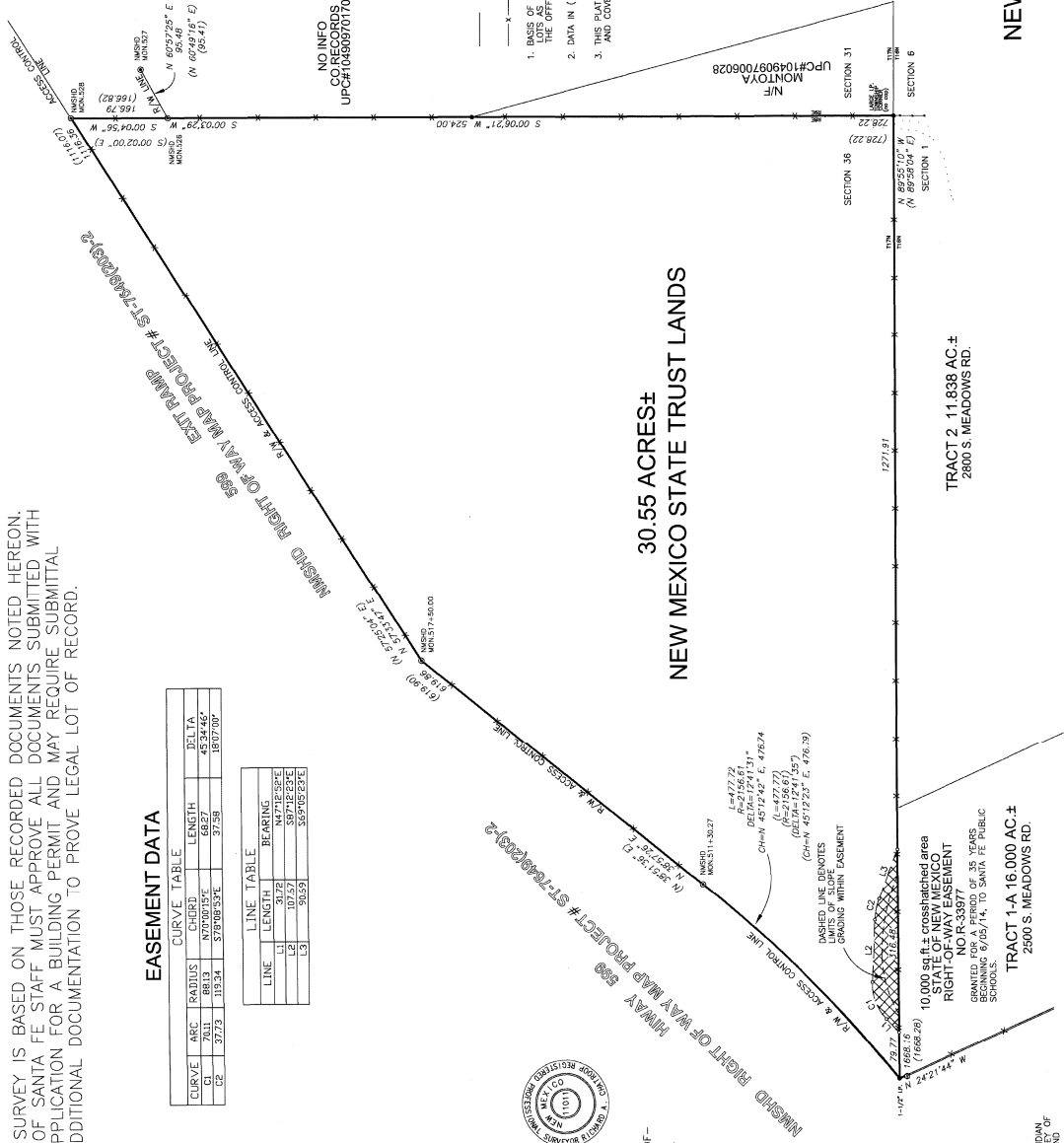
- DENOTES POINT FOUND AS NOTED
- DENOTES POINT SET THIS SURVEY
- DENOTES POINT CALCULATED
- DENOTES MONUMENT

— DENOTES EDGE OF EASEMENT
 —X—X—X— DENOTES FENCE LINE

1. BASIS OF BEARING IS FROM "BOUNDARY SURVEY OF EXTERIOR DATA FOR LOTS AS SHOWN BY RICHARD A. CHATROOP, MAPS # 1011 AND FILED IN THE OFFICE OF THE SANTA FE CLERK IN PLAT BOOK 31, PAGE 40.

2. DATA IN () IS FROM PLAT REFERENCE# WHERE IT DIFFERS FROM DATA SHOWN.
 3. THIS PLAT IS SUBJECT TO ANY EASEMENTS, RESTRICTIONS AND COVENANTS OF RECORD.

PUBLIC LAND SURVEY NOTE:
 THIS SURVEY IS SUBJECT TO ANY EASEMENTS, RESTRICTIONS AND COVENANTS OF RECORD WHICH THE S1/4 AND THE SW 1/4 OF THE SECTION 31, T7N, R8E, N.M.P.M., SANTA FE COUNTY, NEW MEXICO.



30.55 ACRES±
 NEW MEXICO STATE TRUST LANDS

TRACT 2 11.838 AC±
 2800 S. MEADOWS RD.

NEW MEXICO STATE TRUST LANDS

LYING WITHIN SECTION 36, T17N, R8E, N.M.P.M., SANTA FE COUNTY, NEW MEXICO.

COUNTY OF SANTA FE, N.M.
 STATE OF NEW MEXICO
 This instrument was filed for record on the 15th day of July, 2007, at 10:55 A.M. in Book 37, Page 40, of the County Clerk's Office, Santa Fe County, New Mexico.



Witness my Hand and Seal of Office this 15th day of July, 2007.
 County Clerk, Santa Fe County, N.M. - 1167-974

Deputy

RICK CHATROOP
 PROFESSIONAL LAND SURVEYOR
 NEW MEXICO REGISTRATION NO. 11011
 (800) 470-0037 110 WAGON TRAIL RD. CARLOS, N.M. 87004

STATE OF NEW MEXICO
 OFFICE OF THE COUNTY CLERK
 COUNTY OF SANTA FE
 COUNTY CLERK'S OFFICE
 100 W. WASHINGTON ST., SUITE 1000, SANTA FE, NEW MEXICO 87501